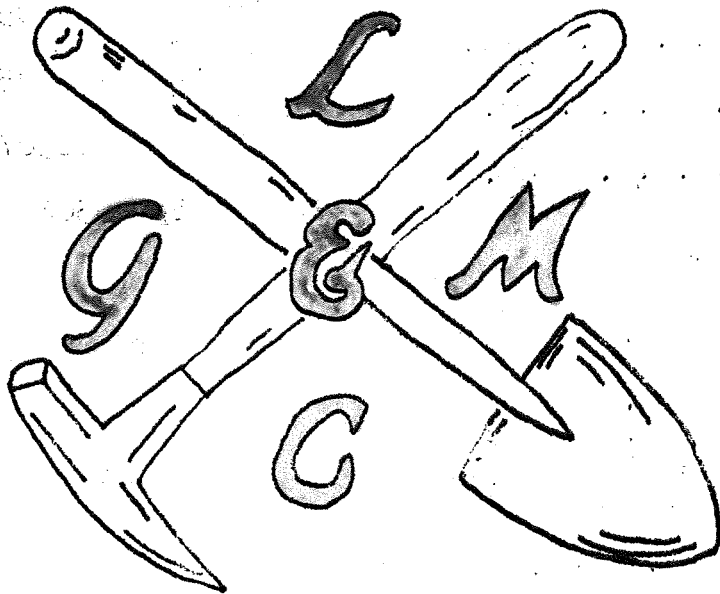


May 1967

# THE PICK & SHOVEL



L I N C O L N   G E M   &   M I N E R A L   C L U B ,   I N C .

Lincoln, Nebraska

THE PICK & SHOVEL

Official Publication of

THE LINCOLN GEM AND MINERAL CLUB, INC., LINCOLN, NEBRASKA

The purpose of the corporation shall be to study, promote an interest in, and disseminate knowledge of lapidary and various Earth Sciences, including but not necessarily limited to geology, paleontology and mineralogy. It shall be a particular purpose of the corporation to provide education in these various fields to its members and the general public, particularly youth and student groups.

1967 ELECTED OFFICERS

President . . . . .	Mr. Gene Eno 2600 Garfield Zip 68502	423-6157
1st Vice President . .	Mr. Howard Taylor 910 New Hampshire Zip 68508	432-3707
2nd Vice President . .	Mr. G. W. McKinney 6720 Ballard Zip 68507	466-0196
Recording Secretary . .	Mrs. Katherine Ulrich 441 Jeffery Drive Zip 68505	434-6757
Treasurer . . . . .	Mrs. Louise Baugher 7415 Englewood Drive Zip 68510	488-4274
Board Member . . . . .	Mr. Arthur Bloyd 2818 North Cotner Zip 68507	434-4781
Board Member . . . . .	Mr. Jerrold Kohn 4944 Washington Zip 68506	488-4547

APPOINTED OFFICERS & CHAIRMEN

BULLETIN STAFF

Liaison	Mrs. Velma Bloyd	Editor . .Mrs.Phyllis Parks
Historian & By-Laws	Mrs. Frances Tracy	2435 So. 19th
Librarian	Mrs.Dorothy Engelhart	Lincoln Zip 68502
Program	Roger Simmons	423-6798
Field Trips	Art Bloyd	Assistant.Mrs.Norma Miller
Hospitality & Guest Book	Mr.& Mrs. John Lewis	Art Work .Jim Parks
Education	Dick Hedges	Club News.Mrs. Marie Carveth
Refreshments	Mr.& Mrs. Earl Amen	2526 So.11, 68502
Junior Sponsor	Gene Eno	432-9100
Scholarship & Comm.Stamps	Helena Baegl	Reporters . ALL CLUB MEMBERS
1967 ROCKRAMA	Howard Taylor	News items and other contri-
1967 Float for Nebraskaland-Ralph Ulrich		butions should be in the editors
Legislative	Frank Marsh	hands no later than the <u>fifth</u> of
		the month to be used.
		Editor-Member Natl.Bulletin Ed.Assn.

affiliated with

MIDWEST FEDERATION OF MINERALOGICAL AND GEOLOGICAL SOCIETIES

AMERICAN FEDERATION OF MINERALOGICAL SOCIETIES

Articles published in THE PICK AND SHOVEL may be reprinted if credit is given and a copy of the publication is mailed to the editor.

## C A L E N D A R

MEETING: May 27, 1967, 7:30 P.M.  
Roberts Dairy Party Room, 211 South 20th Street

PROGRAM: The President talks on "Collecting Rocks"  
Procedures, Tools and their use  
(Panel discussion - Gene Eno & Co.)

THANK YOU: May we express our appreciation and thanks for the refreshments served at our April meeting furnished by  
Mr. & Mrs. Howard Taylor, Mrs. Taylor, Hostess.  
Mr. & Mrs. Maurice Tracy, Mrs. Tracy, Hostess and  
Mr. Tracy keeping everybody happy with plenty of coffee.

Mr. & Mrs. Ralph Ulrich.

Mr. & Mrs. Julius Young.

Thanks to you all,

Mr. & Mrs. Earl Amen, Chairmen

CORRECTIONS: Please add this number to your 1967 Who's Who  
George E. McGinnis 466-4878  
Please change Earl Amen number to 423-4442

FIELD TRIP: Sunday, May 28, 1967 - Fremont, Nebr. (Details elsewhere)

SLIDE SHOWS: Morrill Hall has been reserved for Wednesday evening, May 31, 1967 for a possible slide showing, narrated by Lt. Colonel Keirstead. The confirmation of this event is a bit uncertain so if you are interested please watch for a call from the calling committee or try to call one of your officers on Wednesday. These should be excellent viewing and we quote from the North Platte Club bulletin (who are having the showing on Monday, May 29) "One program is 'This Changing World', the other is 'Treasures of the World'. The latter shows many famous jewels, treasures, Egyptian tombs, etc."

ROCK SWAP: August 12-13, 1967, Boy Scout Camp. George McGinnis is Chairman. Flyers with complete details will be included with either May or June Pick & Shovel. Watch for it.

COMING EVENTS: BE SURE TO ATTEND SOME OF THE FEDERATION SHOWS!!!

June 9-11	Rocky Mt. Federation Annual Convention & Show, Casper, Wyo.
June 29-July 2	American Federation & Eastern Federation combined "Our Mineral Heritage", Washington, D. C.
July 27-30	Midwest Federation Convention & Show, Rock Island, Ill. "Our World of Stones"
Aug. 12-13	LGMC Second Annual Rock Swap
Sept. 2-4	President's Field Trip to Crawford, Nebr.
Sept. 15-17	Plains Rock & Mineral Club Show, Kimball, Nebr.
Sept. 22-24	LGMC - NEBRASKA CENTENNIAL ROCKRAMA
Oct. 7-8	Nebraska Mineral & Gem Club Annual Show, Omaha, Nebr.
Oct. 7-8	Topeka Gem & Mineral Show, Topeka, Kansas
Oct. 14-15	Prairie Rockhounds 1967 Rock Show, Ogallala, Nebr.

REMEMBER: May is the last regular business meeting until fall unless activities warrant calling a special meeting, as we do sometimes in September before the show.

## *Linde Stars*

FIT FOR A QUEEN -- Visitors to our Centennial Rockrama at Pershing Auditorium, Lincoln, Nebraska, Sept. 22, 23, & 24, 1967, will see one of a kind Linde Star Coronation Necklace worn to the Coronation of Queen Elizabeth II in 1953 at Westminster Abbey. The design of the necklace, valued at \$25,000, is in a style known as "antique". Its designer is the Russian Princess, Alexandra Kropotkin, who has excelled also as a writer, biographer, columnist and fashion consultant. The magnificent central star in the pendant is the fourth largest Star ruby known to exist and weighs nearly 110 cts. and is on display at the American Museum of Natural History in New York City.

The necklace is fashioned of individual laurel leaves executed in three shades of American-mined gold--yellow, white and green. The smaller Linde Star rubies in the golden necklace weigh 14 cts. each. There is a total of 86 full-cut diamonds weighing a total of 10 cts.

--released from Linde Div. of Union Carbide Co.

News of this feature attraction arrived with the additional information that we would also be provided with glass enclosed cases showing the growth series of a Linde Star from seed crystal to polished stone. Some finished jewelry will also be included.

Arrangements have been made with the Lincoln Police Dept. to take care of the security of the necklace while it is in Lincoln for the Rockrama.

## A MESSAGE FROM OUR PRESIDENT

Plans and arrangements for the Centennial Rockrama are moving ahead at a rapid pace. A number of outstanding exhibits are lined up, we have contracts for some outstanding dealers, a number of which have not been seen in Lincoln before, and various publicity promotions are well underway.

We already have the nucleus of one of the best ROCKRAMAS ever seen in the midwest. We have been promising Federation Officials and people we have contacted from other clubs a "really Big Show" as Ed Sullivan would say. We have shoved Howard Taylor out on the limb by mentioning at least 500 displays. Some of these of course will come from other clubs in the area, but the bulk of them must come from our own club. So in order to prevent the limb from being sawed off behind Howard - (and the rest of the club along with him) we had better dig down and go all out.

It is not too early to be making concrete plans of just what you are going to show. In fact it is a very good idea to put together some of your planned displays and ask for constructive criticism. Oftentimes someone else may make a suggestion which will be a major improvement. It will also give you time to make typed labels, (check spelling) pick the right background material, try several different arrangements, and even to acquire or make an item or two to fill out your display.

Now is the time also to arrange for that additional case or two you plan to acquire. Too often case-makers have been swamped the month preceeding the show. Why not give them a break this year.

It will also be helpful to the floor layout committee to know how many and what type of displays you will have. I know it is difficult to say exactly at this early date but they would rather work from an educated guess than from no knowledge at all.

**GET THOSE SIGNED FORMS TO HOWARD!!!**

Gene En●

## 1967 NEBRASKA CENTENNIAL ROCKRAMA

Rockrama Chairman, Howard Taylor, reports that things are really shaping up. To us he sort of radiates the enthusiasm felt by the various committee heads who are involved with preparations for the special features, dealers, visitor displays, ticket sales, publicity, and the many additional plans required for a show at Pershing Auditorium.

Very soon now will come special announcements regarding the advance ticket sales, free passes, membership participation in the matter of displays, plans for set up and closing of the show, complete details for the various competitions and programs which combine to make this a special and eventful time for all Lincoln Gem and Mineral Club members.

Howard repeats the desire for all members to report the amount of space they will be able to fill for the Rockrama. This is most necessary to enable the floor plan to be finalized. Remember - if you have no displays - you should report this to Howard, or if you are not certain of the exact amount you need, please make a safe estimate. This information should be in his hands no later than the first of June.

Included in this month's bulletin is a write-up of the Coronation Necklace which we are so fortunate to be able to display. This and the accompanying displays should be of real interest to those who are interested in our hobby.

Now, will each of you members who has not in some way become involved with the preparations, take stock of your talents and place them at the disposal of the many Rockrama Committee Chairmen for any time you may have available. Make this YOUR show, and help put it over BIG.

Several different flyers and other printed gimmicks have been spread through various parts of the midwest and attention is rapidly mounting to see what will come next. Some of these are claimed to be collector's items already and may well become legend before September. The stories connected with them should add considerably to the Club's history.

REMEMBER ---June 1st - deadline for case and display space report.

REMEMBER - If you paid your dues this is your show and it needs you.

\* \* \*

N E E D     O F     C A S E S

Again this year our club intends to purchase more cases (Wichita). It is believed that in quantity of purchase we can get a better price per case. Is there anyone in the club who would be interested in cases for themselves?

These will be made of white pine, glass and hardware complete (no lock) but unfinished. If we can submit an order for 25 cases the price would be \$12.00 each. If less than 25 cost would be \$14.00 each.

If you would desire them to be finished (natural) this can be done for an extra \$2.00 per case.

If interested please contact: Mr. Dick Hedges    ph. 488-4141  
5844 South Street

CASH IS REQUIRED WITH ORDER...

Lincoln, Nebraska

## FIELD TRIP:

WHAT - Covered dish picnic dinner.  
 WHERE - City Park, Fremont, Nebraska  
 WHEN - May 28, 1967. 1:00 o'clock PM sharp.  
 Caravan will leave at 2:00 o'clock sharp for the Lincoln Sand and Gravel Pits. Virgil Carveth will lead the group as he has obtained permission for the L.G.M.C. to enter the area.

Remember the children - the sand and the shore line of the lakes can be treacherous and deceiving, as well as a real fun place to play. No tragedy should mar a wonderful day in the great outdoors.

And also remember - Be a good Indian  
 Keep America Clean  
 H. E. L. P.

Help Eliminate Litter Please!

\* \* \*

## PLANS FOR NEBRASKALAND PARADE FLOAT:

"Displaying the Treasures of Nebraska and the Coming ROCKRAMA"

The float will have three articles besides the signs that advertise the Rockrama. The three articles are a Mastodon head; a plastic, faceted blue gem stone; and a large, made up prairie agate. These represent the state fossil, gem, and rock. The noon hour review will be held between N & O Sts. on 12th St., at 12 o'clock, date not definite. We will have the large sign of Nebraska with Gem Trails, balloons with ROCKRAMA printed on them, and possibly, operating lapidary machinery.

-submitted by Ralph Ulrich, Float  
 Committee Chairman

\* \* \*

## ROCK COLLECTING AREAS IN NEBRASKA:

The Lincoln Gem and Mineral Club would like to make up a nice program on Rock Collecting Areas in Nebraska. This program would be used at the Rockrama and if it is good enough it would be used as a Federation program. We would like to have some workers for this program if you would like to help. We need lots of colored slides which will be judged by the committee, and after we look at the slides they will be copied and returned to you. We would need the slide, your name, where the slide was taken, when, and what kind of material was found there. We need some slides of Fort Robertson, (did you mean Robinson, Dick?) of Odell Diamond area, Fullerton, etc.

If you have any slides which could be used leave them with Gene Eno, Dick Hedges, or Irl Everett, or bring to the May club meeting. Call Dick at 488-4141 if you have any questions.

-submitted by Richard Hedges, Education  
 Chairman, & Rockrama Program

DON'T FORGET -- MAY IS THE LAST REGULAR MEETING UNTIL FALL  
 (Watch for announcement of special called meetings.)

## PLEEZY TO MAKE NEWS AGAIN

We haven't heard the last of Pleezy. Recent developments have taken place which will result in additional attention and notoriety to Pleezy, the University of Nebraska State Museum, and our Club.

Dr. Samuel Wells, Professor of Vertebrate Paleontology at the University of California, and curator of reptiles at the California University Museum of Paleontology and a noted authority on plesiosaurs, has been in Lincoln at the University of Nebraska State Museum the past couple of weeks making a detailed study of the plesiosaur our club excavated and prepared a couple of years ago.

Thursday evening, the 11th of May, a group of the members got together for an informal meeting with Dr. Wells at the Museum auditorium. Dr. Wells expressed his personal appreciation for the club's efforts. Many of us were pleased to learn from Dr. Wells that our specimen is in better condition, particularly in certain areas of the skull, than plesio saur specimens discovered up to this time. He stated that he has been able to confirm at least one important fact, which heretofore had only been a strong suspicion, which has an important bearing in establishing the exact evolutionary line from which plesiosaurs descended.

There are other aspects of Pleezy which are also unique. Public announcement of these however will await further research and checking. Let me cover it by saying Nebraska could be on its way to establishing another 'first' in the field of paleontology, but this time with a marine reptile instead of the mammal area for which it is already famous.

Dr. Wells stated that he intends to publish the results of his findings in the near future.

We were also treated to a lecture on plesiosaurs of various types and viewed pictures and slides which Dr. Wells has acquired during his travels and research.

I think that those in attendance were well pleased with the evening and came away with the realization that our efforts have indeed contributed something to the science of vertebrate paleontology.

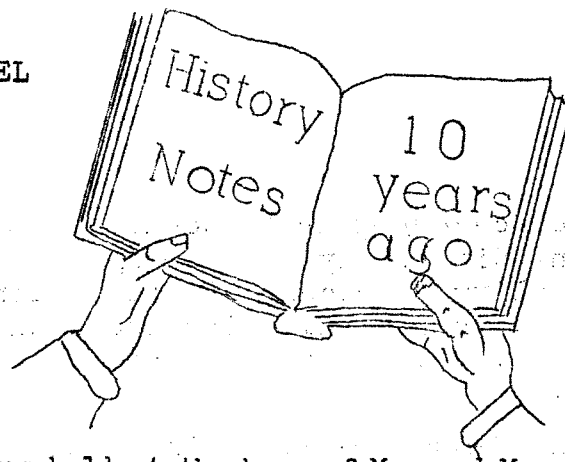
submitted by Gene Eno

\* \* \* \*

A slightly wet day did not seem to dampen the spirits of the rockhounds as they milled through the auditorium at the Manhattan, Kansas, show. Among these rockhounds were members of the Lincoln Gem and Mineral Club who had gone down not only to see the rock show but to advertise that we had a Rockrama coming up.

Ten dealers were present and were a cheery group. We had the chance to buy some of the things that rockhounds need. Displays were plentiful and in good display taste. Your reporter was fond of one display of Mexican Carvings out of gold sheen obsidian. They were large carvings and were of outstanding material.

This was the first time that I had been to the Manhattan show and may I take this space to say to all rockhounds who read this -Go see it next time - it will be well worth your time. Velma Bloyd, Reporter



Our meeting May 1957 was held at the home of Mr. and Mrs. Kenneth Dodge. John Lewis was one of eight guests.

Mr. Dodge ably demonstrated the steps in cutting, grinding and polishing and Mrs. Dodge explained the process used in casting.

A field trip to Pleasantdale for artifacts was planned for Sunday, June 2 with a picnic for members and their families.

No meetings were to be held - June, July, August

from the files of Historian Frances Tracy

\*\*\*\*\*

VITAMINS ANYONE?? Mechanical engineers say that 12 ounces of pressure go into each typing stroke. So, if you typed steadily for eight hours, you'd use up as much energy as you'd need to shovel more than 100 tons of dirt. (OUCH)

via LOESS Bulletin

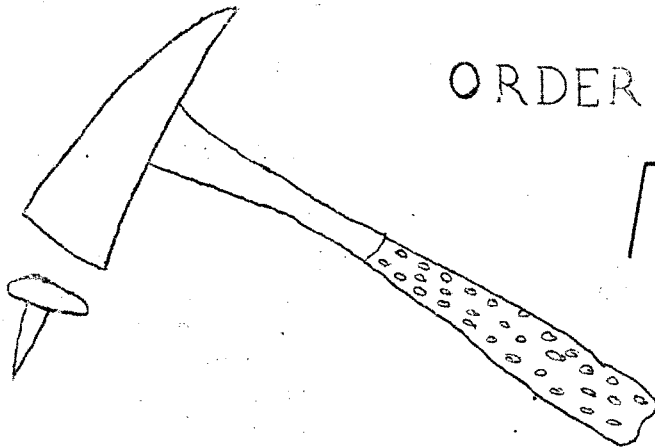
\*\*\*\*\*

advertisement

BEAT THE TAX CENTS

ORDER THAT MACHINE

NOW



CAPITOL CITY'S FIRST ROCK SHOP

EVERETT LAPIDARY SHOP

2941 North 65th Street

Phone 466-6204

SATISFIED CUSTOMERS ARE OUR BEST ADVERTISEMENT

DID YOU KNOW:---

When I watched the Academy Awards recently on TV I was again reminded how much our own editor, Phyllis Parks, resembles Patricia Neal. Miss Neal returned to Hollywood recently after a long stay in England, was given a standing ovation, a truly fine lady, and the same bouquet to our own Mrs. Parks! (P.S. I wonder if she will print this - hope so.) (P.P.S. Norma did.)

I hope all our LGMC members are getting their cameras in shape for some picture taking at our big show! We wish for a film from each member with a camera and a big slide showing after the Rockrama.

Our bearded membership is growing! Add Irl Everett, Everett Weber, Harry Gragg, Earl Amen, Mr. Moser, and Dr. Lange, not to mention Norm Engelhart's moustache. "Altho we've sold a million others, we cannot sell those cough drop brothers - Burma Shave"...A passing scene on the landscape, those familiar signs.

Mr. Waddle was the recipient of a door prize at the Hastings Show, a beautiful pair of onyx book ends in a Mexican design. Senor Waddle, Congratulations!

Now is the time to think of the specimen for the club members display on the center revolving, tiered display. We have used it before so you all know the size of the "gem" we can use, and that you wish to show. This will be the center display, so please come with something colorful, gorgeous, rare, and eye-catching!! OK??

Helena Baegl was among the visitors to the Kansas City Show. She admired the Mozarkite on display there. We understand Kansas is planning to adopt this as their state rock. Many cabochons were used in silver mounts, the color is brownish to the greys, with beautiful pink scenes. After some effort on a dealers part, Helena was able to purchase a specimen in the rough state. The result is an exquisite cabochon with a "sunset scene", Helena says. A hard material, but it takes a beautiful polish.

Our sympathy to Mrs. Foxwell in the loss of her brother.

Until next time - Marie J. Carveth

Adeline Nolde reports -- "I am remiss in not having reported this about a year ago. As you know I am a member of the Colorado Mineral Society, and receive their official monthly Mineral Minutes. I read a year ago that Bob Roots (the bachelor Denver dealer) had a heart attack and went to California to live with his nephew. Quoting from the May, 1967, issue 'We have received word from John R. Roots that Bob is still confined to the Veterans Hospital in Sepulveda, California. Bob passed his 75th birthday last Christmas. John and his wife Millie were asked by Bob to take over his minerals and carry on with his mineral business. They are operating under the name of J & M Minerals. Perhaps at one of our future shows we can have some of Bob's excellent thumbnails and good spirit through his nephew, John. If anyone is interested in contacting Bob through his nephew, their address is: Bob Roots, c/o John R. Roots, 7032 Natick Ave., Van Nuys, Calif. We bet Bob would particularly appreciate cards from our Juniors.'

Of course, our Juniors are grown up who were acquainted with Bob but the adults may wish to contact him. I know I have missed him."

from THE GEM NEWS ---

Isn't it strange that princes and kings  
And clowns that caper in sawdust rings  
And common people, like you and me,  
Are each one building for eternity?

Each is given a bag of tools  
A shapeless mass, and a book of rules.  
And each must hew, ere life has flown,  
A stumbling block or a stepping stone.

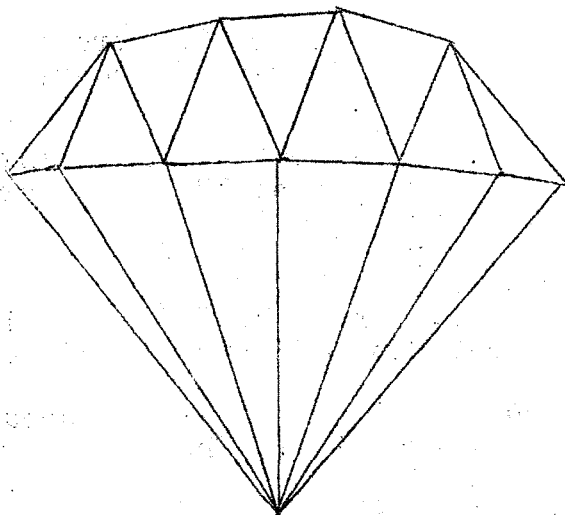
The happiest people on earth today  
Are not those born to thrones,  
But those who've changed their stumbling  
Blocks, with grit, to stepping stones.

via M.S.S.C. Bulletin and  
Turritella Telegram

advertisement

# CLAUS

LAPIDARY & CERAMICS



2639 West O Street

Phone 435-2300

Open daily until 10:00 P. M.

NEW HAND MAGNIFIERS

LAGUNA AGATE

AUSTRALIAN CHRYSOPHRASE

Santa Says: This new luscious  
green Australian Chrysophrase  
has some faceting grade in.

*Come out and visit the "Do-It-Yourself" Shop*

DON'T LICK THAT ROCK!!!

Did you know that this nice hot desert sun isn't the antiseptic agent that we thought it was? A friend's son, who is in the Marines, has lost the upper lobe of one lung through surgery and shortly will be medically discharged. He contracted a kind of fungus in his lungs while on maneuvers around the Lancaster area. This fungus, which starts as spots on the lungs and is painful, incapacitating and even fatal, is produced by some kind of desert plant peculiar to that area and is quite easily contracted.

The following interesting article appeared in the August, 1966, Gems and Minerals:

Fever Warnings Posted

Signs warning field collectors about valley fever were to be posted near Shark's Tooth Hill, California, according to the Kern County Health Department. The department recently made tests which indicated organisms that cause the disease were contained in the soil on the hill. Valley fever is restricted largely to Kern County. In some instances it causes violent illness, and it has been known to be fatal.

Since these areas are quite close together I am wondering if this "Valley Fever" is the same type of disease that the Marine has? Seems that the same type of thing might be anywhere on the desert, so I'm playing it safe and carrying a plastic detergent bottle filled with water along with me after this and give up licking those rocks!

Bessie Hartman  
from the Gem News, Las Vegas, Nev.  
December, 1966

\* \* \*

CHANGE OF ADDRESS - Margie & Garry Heedick to 1008 Worley Street  
Columbia, Missouri

Date note: Marge and Garry Heedick spent Mother's Day in Lincoln with her MOM, our own beloved Mrs. Lona Simmons. After more than a month in their new location it seems Garry was quite excited at the familiar sights of Lincoln. When talking with Marge we discovered that they both like Missouri, the many quarries with ample fossils for all. In fact Garry has laid claim to a large crown of a crinoid which will take lots more time, tools, and effort to recover. They enjoyed receiving their Pick and Shovel and would like to hear from any and all of you.

Marge said they visited the club meeting of the Central Missouri Club at the Geology building of the state university. The people were most friendly and invited Marge and Garry to join their activities. Marge particularly mentioned the beautifully displayed gems at the meeting site.

\* \* \*

INVERTIBRATE PALEONTOLOGY: Roger Pabian reported that a trip to Omaha and a visit with Ted White to see his exceptional specimens would be the next class session. This should be a rewarding excursion.

HELPFUL HINTS FOUND IN OUR EXCHANGES:

Simple button mounting: Flatten a bell cap. (Preferably a #60) Cement it on the back of a cab or baroque. Works best if cemented on a flat surface. via THE PIONEER

Have you tried laying your template to make a cabochon outline on your material and then spraying the opening with clear lacquer or clear plastic? The outline will not wash off in grinding or sawing. via PRAIRIE ROCKHOUND

A strip of electrician's plastic tape around the edge of a cork-backed sander will keep the cork from slipping and breaking off. via LOESS BULLETIN

The monument maker uses a weak solution of oxalic acid to acquire the glassy shine on granite. It is used as a polishing aid. Dissolve a little oxalic acid in water and work into your felt buff or add to your polishing paste and try on agates. It really works wonders. A piece of corduroy glued to soft rubber makes fine, inexpensive polishing material. from Psephite via THE TEMPLATE

\* \* \*

WHAT IS IT?

The grindstone of life is forever turning, and whether it wears a man down or polishes him up depends on what he is made of.

from Rock Chips via THE TEMPLATE

\* \* \*

advertisement

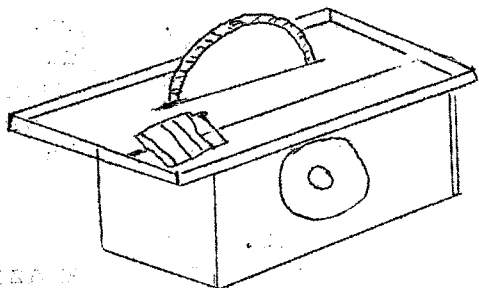
# SIMMONS

RENTAL AND LAPIDARY

2970 South Street

488 1619

Open 3 P. M. to 9 P. M.



FOR SALE: 10" Sears saw  
 \$40.00 without blade  
 \$60.00 with new blade  
 of your choice.

This is a new saw - never cut a rock.

## CHICAGO'S "LITTLE GEM" OF A MUSEUM

Have you ever walked along a road, kicked a stone and suddenly been struck by its unusual color or shape? When you were young, did you save stones found on your trips to the beach?

That's how Joseph Lizzadro became interested in rocks. When he was a young engineer, Lizzadro was walking along Lake Superior's shore, found an interesting stone and wondered what the inside looked like.

Using a diamond saw, he cut across its diameter and found the inside beautifully patterned with color. This started him on a life-long hobby of working with gems and collecting art objects made from precious and semi-precious stones.

About ten years ago his family learned that Lizzadro was leaving his collection to the public. They urged him to plan a showplace for the collection while he could enjoy it.

Six years later the Lizzadro Museum of Lapidary Art was opened on November 4, 1962. The bulk of his collection is now enshrined in the square building with its white stone facade that overlooks Wilder Park in Elmhurst. The interior is done in wood and marble and hints of the elegance it houses. It is truly a "fun discovery" for any Chicagoan who was not aware of its existence.

Actually lapidary art, the study of gems, minerals and fossils, is not new. It can be traced back to ancient times, especially to the eastern cultures.

The first gem cutter in the United States was Abel Buell of Connecticut, who built lapidary equipment and finished gems about 1768. Today the hobby of collecting stones, grinding, sanding and polishing them is the third largest in the United States. In spite of this popularity, the Lizzadro Museum is reportedly the only one of its kind in the country.

The museum's gem displays are educational as well as attractive. They are arranged in family groups and show the rough stone, an interior view of the halved rock and many polished examples, some set in jewelry. Some of the gems displayed are amethysts, topaz, tiger's-eye, agate, jasper, sapphires, rubies and garnets.

Dioramas, in recessed wall cases, depict circus scenes, a graceful underwater picture, grotesque prehistoric monsters, and delightful woodland animals. Each animal is fashioned of gem material by craftsmen of the Idar-Oberstein, a town in Germany devoted exclusively to gem carving. The animals are carved to scale and exhibited in an artistic creation of their own natural habitat.

Art objects on display come mostly from the Orient. Most of these items are carved from one piece of gem material and reflect the amazing skill of the craftsmen.

Many of the Oriental pieces are carved of jade, the most prized gem of the East to which medicinal and spiritual powers were attributed. Mothers ground it into a fine powder and gave it to anyone who was sick.

(continued on next page)

## LIZZADRO MUSEUM (continued)

Chinese writings from 100 A.D. described jade as having the qualities of kindness, perfect understanding, intelligence, bravery and purity.

Mr. Lizzadro's first item in the collection was a jade wine bottle, which he acquired in China and intended to cut up and make into jewelry. He became fascinated by the intricate work on the bottle and reconsidered dismembering it. The bottle had a place of honor in the Lizzadro home until it was placed in the museum.

One of the most valuable items in the museum is the Imperial Screen. This ten-panel screen was a birthday gift to Chinese Emperor Ch'ien Lung in 1736, A.D. Precious materials, including jade, ivory, and mother-of-pearl, are set in a background of red cinnabar and surrounded by a rosewood frame. It is thought that each panel contains a poem dealing with long life, health and happiness.

The screen was first brought to America in 1915 for the World's Fair in San Francisco. Some estimates value it at \$150,000.

Equally as important, but not as pretentious, is the five-piece Chinese altar set, carved in deep green jade with gold inlaid around the base. It was stolen from the Emperor's Summer Palace during a military occupation by the British and French in 1860. Other Oriental exhibits include snuff bottles from the 1600's on, scepters and intricate belt and sash buckles, all carved from different colors of jade.

Since the Chinese Reds have closed their country to the rest of the world, the Lizzadro collection is even more valuable.

If you visit the museum and become interested in lapidary art, you can attend the night school which is also sponsored by the Lizzadro Foundation. "When we first opened we had room in the basement of the museum for eight students," Lizzadro said. "We outgrew that in the first couple of weeks, so we had to find other facilities. Presently there are as many as 100 students enrolled in the school."

The school, under the direction of Wilbert A. Roth, offers courses in basic cabochon (gemstone) cutting, silver-smithing, faceting, rock identification and paleontology.

In the basement of the museum there is a large meeting room which is used for big groups. Programs are offered weekly with the aid of closed circuit television.

Lizzadro is pleased with his museum. You can see it in his enthusiasm. "There's a story behind every one of the pieces in my collection and I enjoy sharing some of these experiences with others. In the four years we have been open, we have had more than 185,000 visitors from all over the world," he exclaimed proudly.

The Lizzadro Museum is located at 220 Cottage Hill in Elmhurst. It is open every day, except Monday, from 1 p.m. to 5 p.m. and on Saturday from 10 a.m. to 5 p.m.

taken from the Spring Issue of Customer's Magazine  
put out by First Federal Savings & Loan Assn.  
of Chicago. --contributed by Helena Baegl

# Midwest Federation's NEWSLETTER

Published monthly except July & August as a Service to Member Clubs.  
Editor: Haydon Peterson, Route 5 - Box 229, Des Moines, Ia. 50317



Issue No. 75 - May 1967

## STAND ON THE SHOULDERS OF GIANTS

(The following is from the acceptance speech of Bernice Rexin when elected President of American Federation at Las Vegas American Federation Banquet. American Federation Officers serve from November 1st through October 31st but are elected and installed at the American National Banquet.

The American Federation's motto for 1966-67 concerns education which is its general purpose.

Isaac Newton, the great 17th Century genius and father of the scientific method, said "If I have seen farther than others, it is because I have stood on the shoulders of giants."

Every normal American has the opportunity of standing on the shoulders of giants and many are doing so. Some are even standing on the shoulders of giants and reaching for the moon.

These giants are the great men of genius who have made important discoveries in the past and are making new discoveries today. They are found in our libraries, our research centers and sometimes in the every day walks of life. Our guides to them are our schools and the men of learning who impart their knowledge to others.

Stand on the shoulders of giants and look about you. If you make a new discovery, you too will be counted among the giants. Even if you do not make a new discovery, your life will be greatly enriched for you will be able to see the world around you more clearly and appreciate its wonders.

In November do not set aside our present mottos of Communication and Understanding for they are essential to the success of the 1966-7 motto. For communication is a pathway that leads to the giants and Understanding is the light that illuminates that which lies before you.

Stand on the Shoulders of Giants shall be our

## GUIDEPOSTS FOR LIAISON OFFICERS

Included in this issue of the Newsletter is a list of suggested functions of a L.O. Please see that this is made part of the Operations Manual issued to each club in 1965.

motto for 1966-7. Stand on the shoulders of giants and look about you, and when you have looked, share what you have learned with others.

## OUR VICE PRESIDENT IN WISCONSIN

Arthur A. Miller is the MWF State Vice President in Wisconsin. This gentleman certainly has had special training for this important service position.

Art is interested in all facets of one hobby. Consequently, no matter where he is or with whom his enthusiasm is always captivating to the pleasure of all present. In fact he maintains that his "favorite pastime is swapping lies and rocks with everyone."

Charter member of the Rib Mountain Gem and Mineral Society, Inc. of Wausau, Wisconsin he has served as President and Chairman of the Program Committee several times; Chairman of the First Rock-rama held in the area; presently Liaison Officer of his Club. This reads like the introduction to the presentation of an honorary degree!

Lapidary work plus carving are his favorites. Opal his special cutting material. Those who have not heard Art's Opal program have missed a must in formative talk.

407 Frenzel, Wausau, Wisconsin 54401 is where the coffee pot is always on and visiting rockhounds welcome.

P. S. Don't miss seeing his outstanding collection of crystalline specimens.

## ROCK "CHAIN LETTER" REPORTED

Someone once said cynically that practically everything in life that was pleasurable was illegal immoral or fattening. I do not know whether participating in an opportunity to receive a multitude of mineral or fossil specimens or slabs in return for giving away a single specimen is immoral or fattening, but I do know that when this procedure is based upon the so-called "chain letter" the procedure is illegal. Section 124.5 of the Postal Regulations prohibits lotteries and includes chain letters within its concept. Apparently every so often the "chain letter" pops up again and is supported by that old feeling in most of us of enjoying "getting something for nothing." As almost everyone knows, practically always the only people who reap the benefits of the "chain letter" scheme are the people who put it together and start it out. You Midwest Federation strongly urges all of its member clubs to in turn urge their members to "break the chain" and throw any such requests that they may receive into the waste basket. -Reported by Calvin George, Legislation and Conservation Committee Chairman

---

### OUR VICE PRESIDENT IN OHIO

---

Roy A. Meyenberg, MWF State Vice President for Ohio, first job after school and weekends was with the Cleveland Museum of Natural Science, working under its curator of mineralogy and paleontology. This included collecting tips, watching and learning how minerals and fossils are prepared and displayed by professional institutions.

His college work at both Bowling Green and Penn placed him close to Ohios fine collecting areas.

Roy is a member of the Cleveland Geological Society, a semi-professional group, holding the office of field trip chairman for several years. The Meyenberg's collection numbers more than 5000 specimens. As you would expect, cataloged and arranged according to Dana.

Typical of a Rockhound, this wealth of knowledge, experience and his collection are willingly shared. Roy has been a judge at Midwest Federation Conventions, local clubs, out of town clubs, county fairs plus frequently entering special exhibits and presenting programs.

Roy, Caroline and their 4 year old daughter, Diana Lynne, live at 324 East 243rd Street, Euclid, Ohio, right on the shores of Lake Erie!

For assistance in club operations, programs, shows, Roy is always in "go position". Ohio clubs, this is your lucky day. Don't hesitate to contact your State Vice President for assistance, advice and especially tell him about your worthy accomplishments so they too can be shared with others.

### MARGARET YANASAK

advises us of an additional name of a person who will do identification for us. Dr. T. R. West, Ass't Professor Engineering Geology, Perdue University, Lafayette, Indiana 47907.

### ANOTHER HELP FOR PROGRAM CHAIRMAN

Richard W. Rose, Assistant Vice President S.W. Michigan, Past President Grand Rapids Mineral Society, Graduate University of Michigan School of Dentistry. Life Long interest in Natural Sciences especially Earth Sciences.

"Doc" Rose is a member of the Michigan Basin Geological Society, composed of professional geologists from the States and some provinces of Canada involved in the Michigan Basin and has accompanied this group on many field trips throughout the area. He also periodically accompanies various group originating at Michigan State University on geological field trips such as, around Lake Huron, the Sudbury-Ontario area, Bancroft, and Red Lake areas. Being an ardent amateur photographer he has catalogued hundreds of slides ranging from basic geology, through rock types, minerals, fossils, and just plain beautiful scenery. He can tailor a program to meet needs from basic rock identification to slides on individual areas. Probably his most requested programs are on the basic geological history of Michigan and a program on basic cutting and polishing for the beginner. A slide program showing the steps involved in producing a cab using various types of machinery and containing some tips on cutting and polishing. In the making is a program on silver working.

Dr. Richard W. Rose, 422 North Park Street, Grand Rapids, Michigan is the answer to every program chairmans prayer. Make your reservations well in advance.

---

### OUR VICE PRESIDENT IN INDIANA

---

Charles Mull, MWF Indiana State V.P. is a 100% Hoosier... born in Lafayette, Indiana, a Purdue graduate, employed by the Allison Division of General Motors in Indianapolis.

A childhood curiosity in a neighbors rock collection sparked an interest in the lapidary arts. This has grown to where now the public looks for his displays at Rockramas, Conventions and club shows. This interest Charles shows by giving talks on cutting and polishing cabs, faceting, plus judging at shows.

He was chairman of the Indianapolis Rockrama and presently is Indiana State V.P. for the MWF. Charles, wife Dottie and son live at 5675 Winthrop Avenue, Indianapolis, Indiana. Here again is a rich bank of experience willing to be shared just for the asking.

### THE 1967 MIDWEST FEDERATION CONVENTION

This years Convention grows nearing with each passing month and from reports coming in from E. J. Kloft it appears that preparations are going forward full steam and that a fine show and convention is in store for us on July 27-28-29-30 in Davenport, Iowa and Rock Island, Illinois. The meeting in Davenport at the Blackhawk Hotel; the show in the Rock Island Armory in Rock Island. A full report of the activities will be printed in our June issue.

- MAKE YOUR PLANS TO ATTEND -

## STATES HAVING ROCK OR MINERAL LAWS

In 1965 California became the first State to designate by law an official State Rock and/or Mineral. By the end of 1966 eight (8) States had enacted laws naming official Rocks and/or Minerals as follows:

State	Rock	Mineral	Gem	Date
California	Serpentine	Gold		April, 1965
Ohio			Flint	May, 1965
Illinois		Fluorite		'65 or '66
Michigan	Petoskey Stone			'65 or '66
South Dakota	Fairburn Agate	Rose Quartz		1966
Rhode Island	Cumberlandite	Bowenite		1966
Oregon	Thunder Egg			'65 or '66
Florida	Coral			'66

Since January 1, 1967 at least nine (9) States have passed laws or have Bills pending for State Rock and/or Mineral.

Arkansas	Bauxite	Quartz	Diamond	Feb. 14, 1967
Idaho			Star Garnet	
Iowa		Geode		
Missouri	Mozarkite	Galena		
Nebraska	Prairie Agate	Blue Agate	Mammoth Fossil	Mar. 1, 1967
North Dakota		Petrified Wood		
Utah			Topaz	
Wyoming			Jade	
Washington	Granite	Carnelian		

We have been informed that Kansas Rockhounds want Chalk as their State Rock, and that Oklahoma Rockhounds are working for Barite Rose. Maine is believed to have Bills for Rock and Mineral laws ready for introduction; (Probably in the hopper by now,) however we are not informed of the name of the Rock or Mineral selected for recommendation to their legislatures.

We understand certain Canadian Provinces have official Rocks and/or Minerals.

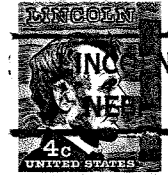
Several States have had unofficial rocks or minerals:

New Hampshire	--Granite??	(Any one have any information on this see Washington above?)
Colorado	--Silver	
Minnesota	--Iron	
Arizona	--Copper	

Copy from "ROCK LORE" of the Saint Louis Mineral and Gem Society which we received for the first time this month.

Comment: A very fine bulletin and we are most pleased to receive it.  
editor

Lincoln Gem & Mineral Club, Inc.  
Phyllis Parks, Editor  
2435 South 19th St.  
Lincoln, Nebraska 68502



TO

Mr. & Mrs. Maurice Tracy  
3601 South St.  
Lincoln, Nebr. 68506



# CENTENNIAL ROCKRAMA

PERSHING

AUDITORIUM

LINCOLN

NEBRASKA

SEPTEMBER 22, 23, 24-1967