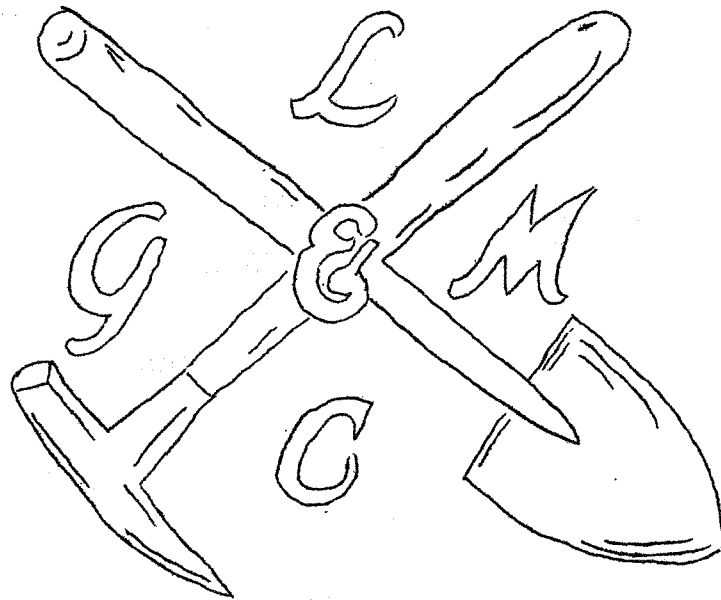


Febr 1966

THE PICK & SHOVEL



L I N C O L N G E M A N D M I N E R A L C L U B , I N C .

Lincoln, Nebraska

THE LINCOLN GEM AND MINERAL CLUB, INC.

The purpose of this corporation shall be the improvement of its members in the art of cutting and polishing gem materials, the study of mineralogy and geology, to collect minerals and gem materials, to provide opportunity for the purchase, exchange and exhibition of mineral specimens and materials.

1966 ELECTED OFFICERS

President Mr. Bruce Simon, 3922 So. 20th
1st Vice-President Mr. Gene Eno, 2600 Garfield
2nd Vice-President Mr. Howard Taylor, 910 New Hampshire
Recording Secretary Mrs. Katherine Ulrich, 441 Jeffery Dr.
Treasurer Mrs. Louise Baugher, 7415 Engelwood Dr.

* * *

APPOINTED OFFICERS & CHAIRMEN

Corresponding Secretary Mrs. Ferne Simon
Historian and By-Laws Mrs. Frances Tracy
Librarian Mrs. Dorothy Engelhart
Program Coordinators Richard Hedges
Roger Pabian
Hospitality & Guest Book Mr. & Mrs. Jerrold Kohn
Education Roger Simmons
Refreshments Miriam Forbes
Junior Member Sponsor Mrs. Velma Bloyd
Junior Chairman Judy Weber
Scholarship Fund Helena Baegl

Other appointments to be announced as filled

* * *

BULLETIN EDITOR - Mrs. Phyllis Parks Telephone 423-6798
2435 South 19th St.
Lincoln, Nebraska 68502

News items and other contributions which may be of interest to our membership and exchanges should be in the editors hands no later than the tenth of the month to be used.

* * *

Affiliated with:

MIDWEST FEDERATION OF MINERALOGICAL AND GEOLOGICAL SOCIETIES
AMERICAN FEDERATION OF MINERALOGICAL SOCIETIES

* * *

Articles published in THE PICK AND SHOVEL may be reprinted if credit is given and a copy of the publication is mailed to the Editor.

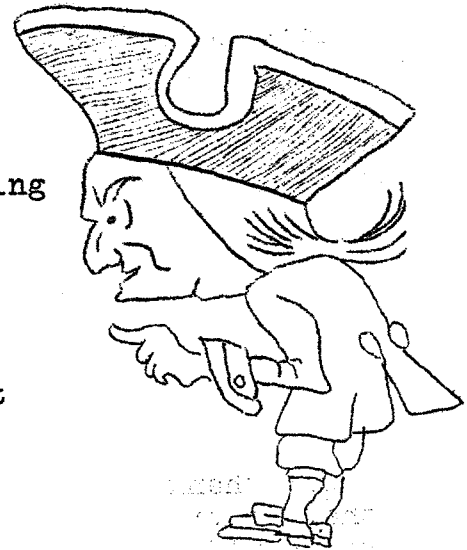
E V E N T S T H I S M O N T H

Regular Meeting - Saturday, February 26, 1966
 7:30 P. M.
 Roberts Dairy Party Room, 211 So. 20th St.

PROGRAM

John Hufford of Omaha will tell about "Prince of Wales Island" in Alaska and will show slides. All members are invited to bring any gem or mineral specimens from Alaska. There will be a case provided to place them in for viewing.

The program will be presented before the business meeting so please be prompt out of courtesy to our speaker.



* * *

D U E S A R E D U E

This is the last meeting at which you can pay your dues for 1966. Contact Mrs. Louise Baugher after the business meeting or mail \$2.00 per adult listed member to 7415 Engelwood Drive, Lincoln, Nebr. 68510. They must be in the Treasurer's hands before March 1 if you wish to continue receiving your Pick and Shovel and be listed in the Who's Who for 1966.

D U E S A R E D U E

* * *

SHOW CALENDAR

- Mar. 11-13 Southwest Gem & Mineral Show, San Antonio, Texas
- Apr. 8-10 Texas Federation Annual Convention and Show, Beaumont
- Apr. 22-24 Central Nebr. Rock & Mineral Society, Hastings, Nebr.
- Apr. 23-24 Wichita Gem & Mineral Society Show, Wichita, Kansas
- May 6-8 Greater Kansas City Gem & Mineral Club Show, Kansas City, Kansas
- May 12-15 National Gem & Mineral Show, American Federation & California Federation, Las Vegas, Nevada
- June 11-12 Rocky Mountain Federation Annual Convention, Hobbs, N.Mex.
- June 17-19 Midwest Federation Field Trip Convention, Houghton, Mich.
- June 23-25 Wyoming State Mineral & Gem Society, Riverton, Wyoming

ATTEND A CONVENTION - SHOW THIS YEAR

Remember our Midwest Federation thought for 1966 - "To Share With Others"

"SERVICE"

JUNIOR MEMBERS

Regular Meeting - February 25, 1966 at 7:30 P. M.
Sponsor's home, 2818 No. Cotner



PROGRAM - STUDY CLASS

Each member shall bring his test kit. (1 small bottle, streak plate, small magnet and a penny.)

Refreshments - Danny Cowell

1966 CHAIRMEN AND COMMITTEE HEADS

Chairman - Miss Judy Weber Secretary - Leslie Miller
Treasurer - Gary Heedick Jr. Reporter - Ricky Kohn
1966 Jr. Show Chairman - Chris Engelhart
Assistant Show Chairman - Danny Cowell

= = =

Our thanks to the adults who braved the 15 degree below zero weather to bring the junior members to their Jan. 28th meeting. An award should be given to those men for doing work beyond the call of human endurance. Thank you!!

We were joined by 2 guests at our last meeting, Regland Lindholm and Steve Shelly. Both are enthusiastic pebble pups.

Badge sashes will be available at your February meeting. These will have to be purchased by junior members. Your badges will be furnished by the club.

Your Junior Auction will be held in March. Mr. Floyd Olson, adult member of Lincoln Gem and Mineral Club, shall be the auctioneer. Adult members of L. G. M. C. who wish to make a contribution to our auction may do so at their February meeting.

Your 1966 Show plans have been made and preparation for it has been started. If you have not been assigned your project, be sure to attend your February meeting.

Our junior members had a display at Park School on February 4, 1966. The Juniors participating were Chris Engelhart, Clifford Bloyd, Danny Cowell and Judy Weber.

- Submitted by Jr. Sponsor V. Bloyd

Late News - Mrs. Bloyd called to let us know that Judy Weber is once again unable to attend classes and will be homebound for awhile. She may not be able to carry on as Junior Chairman.

The Staff and everyone in L. G. M. C. wish you a very speedy recovery Judy, and extend sincere greetings to you at home.

-pnp

GOLD SOMETIMES IS A NUISANCE

The discovery of gold can be a nuisance. Steel company metallurgists found traces of the precious metal in a batch of high alloy scrap. It was considered a serious contaminant because the scrap was to be remelted and used in making an alloy steel having exacting requirements of composition. It was found that the gold came from the plated tips of scrapped stainless steel fountain pen points.

-S.M.S.Matrix via The Pioneer

THE PRESIDENT'S COLUMN

It was good to see so many interested people at the January meeting despite the cold weather.

We have a good group that continues to grow in size and enthusiasm. The club is growing larger and possibly your special interests are being neglected. A reminder to the program committee or your officers will bring results. Our programs and projects should be what please and interest you.

Show plans are progressing for the 1966 Show and our Super 1967 Centennial production. Our members are responsible for the great effort that makes our annual show a success. Your help and ideas are needed now!

We are working toward an enlarged picnic and area rock swap for our August meeting. Ideas are appreciated. Committees will be formed in the near future.

The Nebraskaland parade entry is taking shape. The Carveths are in charge. They will need lots of help--let them know you are willing.

The Museum work project is continuing on Wednesday evenings and is a worthwhile effort as well as being fun. Everyone is welcome. It is expanding to include both fossil and mineral interests. Contact Dorothy Engelhart for details.

Remember we will have an out-of-town guest who will show slides and tell us about his adventures in Alaska at the February meeting. The program will precede the business meeting so plan to be there on time.

A final reminder. This is your last chance to pay your 1966 dues without penalty. If your money is not received by March 1, you will have to pay the \$1.00 reinstatement fee and your name will not be in the 1966 Who's Who. Kindly pay the treasurer at the meeting or send your dues. Don't be missed this year.

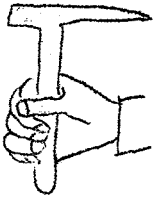
Bruce Simon

* * *

GEMSTONES & MINERALS WHICH MIGHT BE FOUND IN ALASKA

Locations for amber, pectolite, nephrite, quartz, obsidian, corundum, epidote, rhodonite, garnet, gypsum, and serpentine are listed by John Sinkankas in Gemstones of North America. We often see or hear of Alaskan "Black Diamond" which we know is hematite and the Alaskan "Gold Rush" was historically prominent many years ago. How many others do you know of?

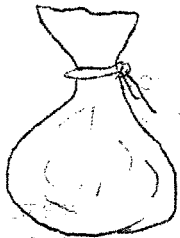
VISIONS OF FIELD TRIPS



With hammer in hand and dreams in my head
 I'll soon go afield again
 I'll go places I've been many times before
 And some where I've never been.



Sometimes I'll have luck, sometimes I'll have none,
 But before this year rolls around
 My shelves at home will be piled quite high
 With new specimens I found.



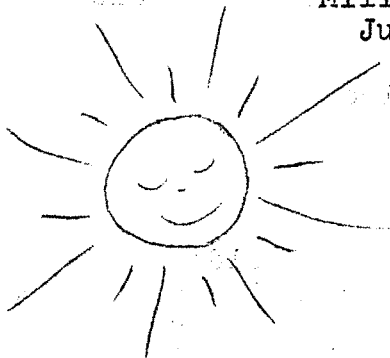
Some will be shiney, others quite dull
 Some will be pretty to see
 Some will be worthless, others worth lots
 But they're all worth a million to me.



For their value to me is not the worth of the rocks
 Or what their sale would yield
 But the wealth of enjoyment I receive
 From tramping around in the field!

What worth can you place on the sky up above
 Or the wind which messes your hair!
 What value is there to a bright summer day
 Or the scent of early spring air !

I'm the richest man in the world today
 For when its all totaled up I found
 Millions of dollars of fun and enjoyment
 Just being a plain old rock hound.



- Gene Eno
 Field Trip Co-ordinator



10 Years Ago

The Lincoln Gem and Mineral Club met February 20, 1956 at Morrill Hall.

Dick Hedges gave a talk on cave formations and cave exploring. Irl Everett showed a film on French cave exploring in the Alps.

New members joining the club were Dr. & Mrs. F. S. Lange and Kenneth Doe.

-from Records of Frances Tracy Historian

= = =

Five years ago the Pick & Shovel welcomed as new members Everett Weber and G. W. McKinney.

Five years ago the Pick & Shovel also carried a feature "How and Why I Became a Rockhound" by Maurice Tracy. Indirectly it seems that "Curly" Washechek at O'Neil was responsible.

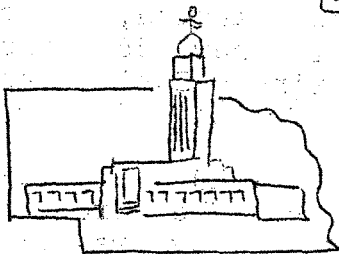
= = =

How and Why did you become a Rockhound? What would the members think of a contest to find the most interesting experiences? Would you be willing to cooperate by telling your own story?

-Editor

adv

Everett Lapidary Shop



2941 North 65th Street

Phone 466-6204

CAPITOL CITY'S FIRST ROCK SHOP

I N T R O D U C I N G

We still have OPAL to please your eye and improve your collection.

Lapis Lazuli from Chili
Green Goldstone as well as
Excellent Brown Goldstone
Real "Good Quality" Moonstone

SATISFIED CUSTOMERS ARE OUR BEST ADVERTISEMENT

D I D Y O U K N O W - - -

A housewarming was held for the newly-weds, Roger and Margaret Simmons, with a large number of the "Lincoln Gem and Mineral Club" members attending. And to quote Edgar Guest "A house is not a home until - Well! this sweet little house already looks like a "home"! Many good wishes Roger and Margaret.

Mr. & Mrs. Tracy and The Carveths will celebrate Virg's Valentine birthday at East Hills. Understand we also have another Valentine birthday - Belated Happy Birthday, Louise Baugher!

The Tupperware party at the Baughers, with so many ladies of the L.G.M.C. present looked like the women's Auxiliary of the Rock Club. Say, is this food for thought - hm-m-m. What do you say, girls?

Our wishes and hope for a return to good health to Mrs. Foxwell. Professor Foxwell is busy creating more of his beautiful silver-work for her.

Miriam Forbes returned from Salt Lake City, spending a week attending a conference on the promotion of Winter Sports and especially skiing. Sounds like fun - and Miriam reports no broken bones. Nice going, Miriam!

Speaking of travels, the Earl Amens are down "South of the Border." The tour will take them to Mexico City, Taxco, and also Acapulco. They shall return with some beautiful gems, we know. We hope they can also give us a program, with Earl taking movies, and Kay using a new color Polaroid, they will have some beautiful pictures to add to their collection.

The silver class, under the direction of Lee Stachura, is again in session, with the old-timers present, plus a few new additions. A little bird told this reporter someone is creating a Zuni Squash-Blossom necklace. We will be anxious to see the finished jewelry.

Richard Hedges, Bruce Simon, and Lloyd Lederer enjoyed a few days at the Picher Mine, in Oklahoma, with Chink Enders. They brought back some fine specimens for the U. of N. also. The boys report they were glad to get back to our own warm Nebraska temperatures!

Good Ol' Nebraska.

To quote Abraham Lincoln whose birthday is celebrated this month: "I never had a policy. I simply tried to do what seemed best each day as each day came.

Upon that thought I shall close this column with a reminder that "This is your special day - Today was made for you - every color - every hue - shall proudly be arrayed for you.

- Marie J. Carveth

PHOTOGRAPHY OF GEMS AND MINERALS

by Richard Hedges

When we want to take a rare or valuable gem or mineral home with us and can't afford to buy it, or it simply isn't for sale, we can do the next best thing---photograph it. And you know, a photo usually costs less and takes up a much smaller space than the specimen. In addition to this, it's liar proof, when you want to talk about it later.

The photography of gems and minerals can be very rewarding and educational to anyone who enjoys gems and minerals. The rest of this article will refer to gems as minerals as gems are only polished minerals.

As I said before, photographing a mineral is often the only way many of us can afford to own part of a mineral because it is the bragging rock of the particular rockhound who owns it and chances are he would rather part with his wife. She might be replaceable but ask any rockhound if his favorite rock is. It might be mentioned here that most owners of prize specimens are very pleased to have them photographed. Many times we also see specimens in museums and rock shows, and amidst dealers wares...minerals that we couldn't possibly buy but which make excellent learning and showing photos. Still another thought on the subject, in case of fire or theft, we couldn't have better proof of the value of our collection than good photographs; they would be of invaluable help to the insurance adjuster. These photos of course should show your catalog number; and the pictures, along with your complete catalog should be placed in your bank box. The catalog should include each specimen's number, name, location in which it was found, when collected and its cost.

How do you photograph a mineral? We can photograph them with any camera and film if we don't get too close and are not worried about the results of the photo. But just as in rock cutting, good equipment and knowledge is the key to success. It might also be noted just as in rock cutting, practice makes perfect, or almost perfect. A really perfect picture is about as rare as a perfectly cut stone.

A large specimen, such as the agatized log we found last summer, can often be photographed with a box camera from about three feet with good results. However, my father once said that a man is as good as his tools and a tool is as good as the man. So, if you would like to take especially good rock pictures, particularly close ups, use a good camera.

After considerable looking around I found a single lens reflex camera to be about the best type developed thus far. Interchangeable lenses, a bellows unit, behind the lens light meter, a lens hood, a close-up lens, a short flexible cable shutter release and a lens brush are also necessary tools.

On all sizes of specimens the first thing to do is use color film with a fairly fast speed, like Kodachrome X, ASA 64, as much of the aesthetic qualities of most minerals are found in their color. Almost

(continued next page)

PHOTOGRAPHY OF GEMS AND MINERALS (continued)

always have the light to your back, which will front light the subject. I have found you can't beat sunlight about 11:00 AM to 2 PM on a cloudless day for light. Then if it is possible, wash the specimen or brush it off with the lens brush, particularly for close-ups as dirt and dust are magnified in relation to the magnification of the mineral in the photo. It is necessary to put your camera on a steady support like a cement block or a sand bag. They do a better job than the best tripod. A cable release on the shutter is needed as in a close-up photograph the camera motion is magnified in direct relationship to the photo magnification.

Use a piece of light colored cloth as a background for a dark mineral and a dark one for light minerals and just make it a habit to carry these with you when you take your camera along.

To get really close to a mineral with a 35 mm reflex camera a bellows unit is used and this allows magnification of more than actual size. Remember not to try to photograph too much at one time as the eye can only take in one thing at a time; I like one mineral specimen to a picture. If you want to take pictures through glass cases at rock shows and want to eliminate the reflections, use a light polarizing filter; put it on your camera and turn the filter in a circle until the glare is out of the picture.

As I mentioned earlier, if you want to enjoy taking mineral specimen pictures, get a single lens reflex camera. The New York camera dealers have good, used cameras at very reasonable prices and their ads appear in any camera magazine.

Good luck and good shooting.

-Richard Hedges

adv

MINERAL SALE

You are invited to the home of Dick Hedges at 5844 South Street for a mineral sale of extra nice mineral specimens, many of which were collected over 10 years ago. All are priced at my cost. I wish to get into photography and I need the room. There will also be some used machines.

If you have any questions please feel free to call me at 488-4141. Remember these are many years ago prices and I'm not trying to get rid of my junk.

- Richard Hedges

The great thing in this world is not so much where we are, but in what direction we are going. -Oliver Wendell Holmes

QUICKSILVER JACKPOT

A correspondent back from the New Almaden mining district near San Jose, California, reports that a lone mineral hunter hit a real jackpot while working an ancient dump. From a single pocket he took out in a days time, the equivalent of forty flasks of mercury worth \$10,000. Most of it was in the form of flashy red cinnabar, but some pools of native metal were found.

The discovery was made in a narrow canyon where as many as 3,000 people lived and worked during boom days following California's first mercury discovery in 1847. Just above the dump, atop the bluff overlooking the little town of New Almaden, still stand two huge chimneys which were part of a network of pipes and vents designed to carry away the poisonous fumes generated by the roasting of cinnabar. Several old retorts are still to be seen nearby.

Local people theorize that over the years mercury vapors condensing in cool sea breezes often drifted down from the heights and gradually enriched the dump once more.

-Pacific Mineralogist via The Pioneer

adv

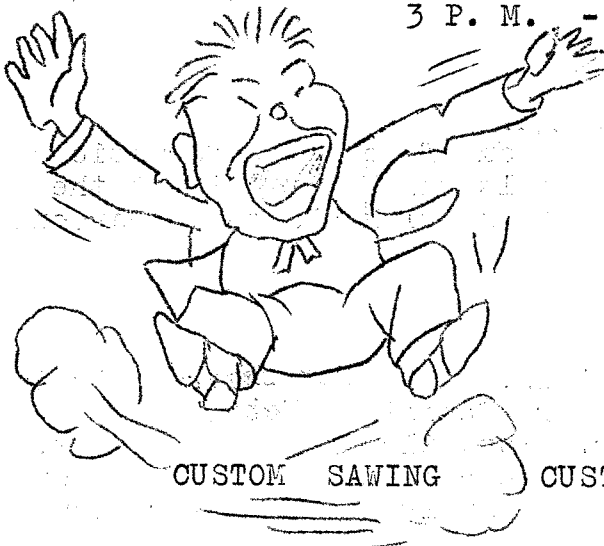
SIMMONS

RENTAL and LAPIDARY

2970 South Street

488-1619

3 P. M. - 9:30 P. M.



You'll find something to help make each and every occasion a special day, be it Washington's birthday, St. Patrick's Day, Mother's Day, a favorite persons birthday or just your own day. Reading materials to help you plan your next vacation.

CUSTOM SAWING

CUSTOM LAPPING

SUPPLIES

WORKSHOP REPORT

Place: Morrill Hall, Room 104

Time: 7 to 9 or 9:30 each Wednesday evening

Thru February 2, 1966 there had been a total of 128½ hours time spent preparing and learning to prepare fossils for laboratory use or Museum display. 18 people have put in some time, many of them coming back each week as they become interested in their work.

On February 2 a few persons started to work with minerals but the schedule is not complete for this work. Suggest you contact Gene Eno for further information.

-Report from Dorothy Engelhart

* * *

LAPIDARY CLASSES

Place: Muni Building, 22nd & N Sts.

Time: Monday, Tuesday or Wednesday evenings

This session of classes will start on Monday, February 21, 1966, sponsored by the City Recreation Department, instructor John Lewis. Beginners \$3.00 per session, those with three sessions completed will pay \$5.00. Contact City Recreation for further details and enjoy one of the fastest growing hobbies of today.

* * *

SCHOLARSHIP FUND REPORT

Scholarship Chairman, Helena Baegl, reports that as of January 24, 1966, she had mailed a total of 1,816 Betty Crocker Coupons to the Federation for a credit of \$9.08. This with our cash donation from the Auctions of \$50.43 and personal donation from Helena of \$2.00 would make a total of \$61.52 contributed by the Lincoln Gem and Mineral Club to the AFMS Scholarship Fund. The Board approved and announced at the January meeting that we would send a check to make us a 100% Club.

* * *

A clinic dealing with exploration of geologic formations useful as foundation and building materials was being held at the Nebraska Center on Wednesday, February 16th, with about 150 persons expected to attend.

* * *

All of our club study materials, including several displays by the Junior Members, were taken to Park School on February 3rd under the direction of Mrs. Bloyd, Mr. Floyd Olson, Mrs Engelhart, where they would be for two weeks. These cases, Pleezy, Gems on Location and other rock displays have certainly been popular items in Lincoln this past year.

SUBJECT: Vacation Report from Kathryn Ulrich

Dear Club Friends: As we were preparing for our vacation in mid-December your editor asked if I would write some copy for the paper upon our return. I agreed and here it is; I will say that a rock-hunting expedition it wasn't. We did some field explorations but distances are so great "out west" and it being the holiday season the activities of the various clubs were scheduled to fit the occasion so we were left to our own resources. The weather was inclement much of the time and we were visiting relatives; when the weather was good they were "under the weather" so we were at times quite frustrated. But--we did have a good trip all 4,423 miles of it. No car trouble, no illness except for my slight discomfort during the low pressure period of the storm in Death Valley. (I really wasn't frightened there, only disappointed.) The hospitality of the people was great; this was our greatest enjoyment of the trip, the people everywhere were wonderful!

A late December vacation trip
Was our fates' decree
And so we headed south,
To see what we could see?

There was Dodge City with old Front Street
Boot Hill and the Hanging Tree.
Delmonico's and the Dodge House too,
The town is full of Western History.

Indian Reservations among the rivers and the pines
And along the highway a covering of snow.
Oh! those Beautiful Hills
Of Southern New Mexico!

Beside the Pecos River we trod
In rock and sand and slough,
And here we recovered a Pecos Diamond or two.(very small)

At Deming we camped, 'twas 22 degrees.
We recovered some carnelian agate
While bending and squinting- but
Mostly crawling along upon our knees!

We hurried then over mountains black-
It was really dark, I fear.
But I was in such a hurry
To see a sister dear! (in Mesa, Ariz.)

In Arizona, at the top of the pass
Near Globe, I'll have you know
We stoppe and I gathered, guess what?
Two plastic bucketfull of snow!

It was midnight and raining in Mesa
But Sis was up, waiting, face aglow!
I knocked and laughed, my buckets in hand
Merry Christmas and a Ho! Ho! Ho! (and finally to bed)

(continued next page)

Vacation Report from Kathryn Ulrich (continued)

It rained and rained, five inches or more
Until streets and rivers were a-flood.

The water came to our boot-tops as we waded from shop to shop
Looking for rock-hounds. (As our field trip was a Dud!)

Near South Mountain Park (near Phoenix) we met some folks
As nice as they could be!

The Bloyds, by name of Del and Betty,
And rock-hounds like you and me! (trading was such fun)

Death Valley was now our goal

Through Wickenburg, cow-town and bold

And a camp at Willow Beach

Near Hoover Dam and Las Vegas's Gold! (fine camp and
sights to see)

There are glories in Death Valley for geologists

And us neophytes to see---

Camping on the Desert

With Tamarack and Sand

Could be lots of Fun--by Gee--!

But-----

In the middle of the night it began to Rain!

My arms, legs and head felt such an awful pain.

The lights went out, the phones went dead

And the wind did howl and blow! (a few coyotes too)

In the morning the draws were full of rain

And the mountains covered with snow !

We left that place, that very day,

The Sun was shining bright,

The flooded rivers flowed across the road

As carefully we went,

And I waved good-bye to The Valley of Death. (you gave me
quite a fright)

[Watch for the second installment of this report very soon.]

* * *

This month we welcome Mrs. Jim Adkins (Kathy) as a new member
of the club. Add her name to your list.

Change of address is due for Mr. Roger Simmons who, with his
bride, now lives at 1425 Smith Street.

Several applications have been approved by the Board so look
for many new faces at the meetings and new names in your Who's Who
next month.

R E M E M B E R - - - D U E S A R E D U E

Subject: Article in Lincoln Star, February 4, 1966

BILL ZIEG'S FLUORESCENT ROCKS

Undoubtedly most Lincoln Gem & Mineral Club Members saw the fine picture of Mr. Zieg of Alliance and read the article presented in such an interesting fashion by Mr. John Lee of the Outstate Nebraska Bureau of the Lincoln newspapers. For any who might have missed it, and for our exchange and complimentary copies we'd like to repeat a few of the particularly appropriate phrases.

"Then Bill flips off the light, picks up an ultraviolet unit, and the whole room glows with brilliant reds, oranges and greens that would make that famous TV peacock hide his plumes in shame."

"In Northwest Nebraska we have one of the finest areas in the country for fluorescents, said the veteran rock hound."

"The art gallery - composed and painted by Mother Nature - is a display of thin sections of agate framed in redwood that look like modern paintings."

There was much more to the article and we'd like to thank the Lincoln Star and John Lee for giving us stories of this type. We can surely appreciate the change from present day stories of strife and terror as we view the pleasant things in life too.

adv.

CLAUS LAPIDARY & CERAMICS

2349 West O St.

Phone 435-2300

Open noon until 10:00 every day



Now is the time!!!!!!!

To start preparations for your displays for this years show (if you haven't already.) We'll be glad to help you in any way we can - there is still time to order new machines, materials, or mountings for your cases.

COME OUT AND VISIT THE "DO-IT-YOURSELF" SHOP

CONE-IN-CONE AT BELL'S MILL

The report on an unusual formation sent in to be identified came back as follows: Specimen is cone-in-cone structure, composed of fibrous calcite, formed in shales by pressure phenomena. Therefore, we can be sure that this specimen found at Bell's Mill, near Stanhope, Iowa is calcite in that very special type of structure which consists of a series of concentric (having a common center) cone shapes. These cone-like shapes are nested together, one inside the other, some being very tiny to those found at Bell's Mill which are sometimes more than a foot long.

When freshly dug, they can be so thin and long that they will bend, like a twig, but once left in the air to dry will become brittle. This drying-out takes very little time and the specimen becomes very delicate. This area produces this structure of calcite in coal-black with the definite vertical thread-like lines or striations.

Cone-in-cone is not a rare formation, but information on this very odd structure is extremely hard to find. Calcite is probably the most common mineral to be found in this manner, however, it is not the only one as coal, quartzite, siderite and gypsum are among those that can sometimes take this unusual structural form.

How was this caused? There are over a half dozen theories as to how this came about and it seems at this point, they are just theories. One theory can be exactly right or even a combination of them. No one really knows for sure making another mystery added to our study.

The identification used the word phenomena to describe the specimen. The dictionary gives the meaning of this word as being something marvelous or wonderful, beyond ordinary conception; in its widest sense, any fact, occurrence, or experience, especially such as can be scientifically described. This is a good word to use and is certainly true of cone-in-cone and of those most interesting specimens obtained at Bell's Mill.

- Virginia McMurray, The Rockette
via Earth Science News

* * *

FEBRUARY BIRTHSTONE - AMETHYST

Amethyst is a variety of crystalline quartz. Its color ranges from the deep red-purple to the pale lavender. The deep red-purple is rather expensive while the paler colors are less so. Large perfect stones are always expensive.

The name amethyst is generally supposed to have been taken from the Greek word meaning not drunk and so if worn as a gemstone it will prevent the same.

Magicians contend that this tone with the image of the sun or moon engraved on it and hung about the neck with the hairs from a baboon's head or swallow feathers, is a sovereign remedy against all charms and sorceries connected with poisoning.

-from The Rockpile (who took part of
their material from Pliny Secundus
whoever that is)

Obviously I've just read the February Rockpile and enjoyed it.-Editor

Midwest Federation's NEWSLETTER

Published Monthly Except July and August by the Midwest Federation

As a Service to It's Member Societies

Editor: Haydon Peterson, Route 5 - Box 229, Des Moines, Iowa



Issue No. 62 - February 1966

THE REASON FOR COMPETITIVE SHOWS

By Sharleen Harvey, Chairman
NWF Judging Committee

The Preamble to the Northwest Federation Constitution begins "The Association of mineral societies into a Federation being desirable for the further purpose of promoting good fellowship among the members of such societies, and the further purpose of conveying knowledge to each other, this Federation is formed," etc. . . .

What better way of "conveying knowledge" about our hobby can be found than to assemble our collections in a display hall, have them judged by a set of Uniform Rules and competent persons, and have the evaluations (score cards) posted on each exhibit for everyone to see, compare, and learn from.

There will always be the person who is merely a "ribbon or trophy seeker". This person really benefits little from judging. He may have a ribbon to take home, but the rest of the members who have their exhibits judged for the purpose of learning, have received a real reward, --the knowledge to better their collections. The person who receives a low score, but learns from this score how to better his work has received a much greater reward than the member who takes his blue ribbon home but does not bother to study his score, compare his work and score with others, or take time to learn anything from the judging. There has never been an exhibit, blue ribbon or not, that could not be improved in some way. The scores on all the exhibits are to help us find the "some way" in which our exhibit could be improved.

When we compete in a Federation show we are bound by judges who are bound by the Uniform Rules to judge all exhibits by the same standards, therefor, when we compare our score-

card with the scorecard on the case next to ours, and with others, we have the opportunity for a real comparison. Maybe the case next to ours has a higher score for workmanship, let's take a long hard look at this exhibitors work and compare it with our own, chances are we can learn how to better our own. Then next year, when we again bring our exhibit to be judged, maybe what we have learned will show, and maybe we too, will receive a higher score in workmanship.

A judge is selected for his competency in the area of the hobby where he will be judging. He is Bound to use the Uniform Rules, the same rules which the exhibitor must use. He cannot change these rules but must abide by them, just as you, the exhibitor must. His only interest in judging is to fairly evaluate all exhibits and to help you, the exhibitor, by passing on to you some of the knowledge that years of experience and education have taught him. In the Northwest Federation the judges are not paid, their only reward is the hope that they are helping you to learn more about the hobby.

This is the real reason for competition at our shows. The conveying of knowledge to each other so that we may improve our collections and further enjoy our hobby.

S E R V I C E

At church recently our minister said, "Service is the overflow of Christian Gratitude".

K. S.

AMERICAN SCHOLARSHIP FOUNDATION

The Midwest Newsletter last month advised you to watch for more names of clubs that had become 100 percenters. We were "reasonably" confident that we would have more names to add to our list and sure enough here are six more 100 percent clubs.

Michiana Rock and Gem Club (Indiana)
Midwest Mineralogical and Lapidary Society
(Michigan)
Evansville Lapidary Society (Indiana)
Michigan Mineralogical Society (Michigan)
Elkhart Mineral Society (Indiana)
Parma Lapidary Club (Ohio)

Congratulations and sincere thanks to all of you for your help on this project! How many more clubs will be listed next month? Will yours be one of them?

Also, incidentally, the Executive Committee is 100 percent in their giving. Know how we did it? At our "Dutch Treat" lunches or dinners at our Committee meetings, two plates are always passed... one for the tip for the waitresses and one for a contribution to the Scholarship Fund. This is another good way for your club to attain their 100% goal. When your club has a banquet or a pot-luck supper, just pass the collection plate for the Scholarship Fund. Every little bit helps! Thanks! Kate

UNIFORM RULES - IMPORTANT - PLEASE NOTE

Any suggestions for changes in the 1966 Uniform Rules, should be sent to Tolson Radloff, Midwest Federation Rules Chairman, 625 Winchester, Lincoln Park, Michigan 48146, before February 20, 1966. Due to the fact that the American Federation Rules Committee will be meeting in May at Las Vegas, Nevada any changes must be sent to the Regional Rules Chairman so that they can be sent to Mr. Jack Klein, American Rules Chairman before March 15, 1966.

The 1966 rules were printed in the January Gems and Minerals magazine and copies will soon be mailed to all member clubs. Look them over and send your ideas to Tolson Radloff at once. Thanks!

1966 FIELD TRIP CONCLAVE

Keep this on your "must do" calendar for 1966!

A FABLE FOR DOTING FOUNDERS

-by Russell P. MacFall

Once upon a time, a bouncing baby was born. His parents and relatives spent hours beside his cradle, admiring him and dandling him on their knees. They were very happy and busy, so much so that they overlooked such prosaic things as recording his name, the names of his parents and god-parents, where and when he was born, and even his first cute sayings.

Years pass, and so did the parents and relatives. The baby grew into a sturdy youth. He played and went to school, and hiked sometimes, and sometimes he wondered who he was, and even how old he was. Some of the other boys could tell him all about their childhood, but his was a blank!

Many of us are the parents of a mineral or a lapidary club. We enjoy the meetings and the associations and the field trips, the Federation rockramas and conventions. Probably your club has a bulletin, full of news items. But do you have a recording angel... an historian... and is he being urged to record what the founders and stalwarts of the club can still remember to tell him about the circumstances of its founding and the names of the founders and officers and distinguished members, the club's sponsorship of rock shows, public service projects, honors and major interests, and to preserve anecdotes of the early days.

If you are doing this, your club will not be an historical orphan some day when those who follow you sit down to wonder who you were and what you did way back in 1966.

Moral: Send your club history to the Federation historian this year.

* * * *

We are always looking for good material to use in these columns. If you have anything... please feel free to send it along. -Editor

LINCOLN GEM AND MINERAL CLUB, INC.

OPERATING STATEMENT

As of December 31, 1965

INCOME

Dues	\$ 299.00
Show - Net (See attached)	506.36
Interest	51.42
Refund by 1964 Corr. Secy.	<u>2.84</u>

TOTAL INCOME

\$ 859.62

EXPENSES

Bulletin	
Paper, Ink, Stencils, Etc.	154.27
Postage	<u>66.50</u>
	220.77
Less adv. income	<u>73.20</u> 147.57
Federation Dues 1966	35.50
Misc. Expenses	
State Incorp. Fee	3.00
MWF Delegate	25.00
Treas. Postage	7.50
Corr. Secy.	5.00
Historian	20.00
Librarian	45.50
Program	10.00
Field Trip	12.37
Pres. Awards	8.50
Memorials	10.00
Pleezy Parade	22.62
Pleezy Programs	42.00
Rent Roberts	15.00
Social Hour	<u>26.50</u> 252.99
Donation Fossil Cases	78.84
Depreciation Expense	157.04

TOTAL EXPENSES

671.94

NET GAIN FOR YEAR

\$ 187.68

LINCOLN GEM AND MINERAL CLUB, INC.

1965 SHOW

INCOME

Dealers	369.00
Door Admissions	534.35
Advance Ticket Sales	93.00
Fishpond	16.90
Snack Bar	<u>426.52</u>

TOTAL INCOME

\$ 1,439.77

EXPENSES

Armory Rent	150.00
Insurance	60.00
Table Expense	
Sawhorses	26.72
Paper Cover	<u>10.81</u>
	37.53
Newspaper Adv.	
Jrl. Star	84.60
Sun	<u>26.60</u>
	111.20
Other Prom. & Adv.	
Flyers (Mailed)	17.65
Showcards	31.10
Bulletins	<u>29.35</u>
	78.10
Fishing Hole Exp.	43.16
Snack Bar	
Roberts	23.34
Schwarz Paper	23.41
Table Plastic	4.13
Potato Chips	10.80
Popcorn	13.64
Rent " Mach.	10.00
7-Up	28.75
14lb# Meat	76.14
Simmons Misc.	68.69
Misc. Cash Pd.	16.09
Sweet Rolls	5.49
Rolls (Fri. Nite)	4.40
Rent Silver &	
Plates	<u>5.00</u>
	289.88
Black Light	4.98
Roto Display	38.40
Exhibitor Ribbons	24.53
Kings Banquet for Dealers	28.00
" Tip	9.00
Door Prizes	10.35
Twins Expense	15.00
Glass Blower	20.00
Jr. Member Expense	8.21
Student Ticket Promotion	<u>5.07</u>

TOTAL EXPENSE

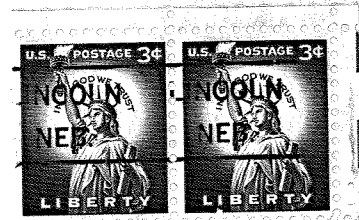
933.41

NET GAIN FOR SHOW IN 1965

\$ 506.36

From

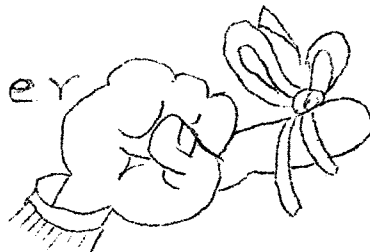
LINCOLN GEM AND MINERAL CLUB, INC.
Mrs. Phyllis Parks, Editor
2435 South 19th St.
Lincoln, Nebr. 68502



TO

Mr. & Mrs. Maurice Tracy
3601 South St.
Lincoln, Nebr.

Remember



SCHOLARSHIP COUPONS - Betty Crocker Coupons worth half cent each

STAMPS FOR MILK - For Refugee Children

CLUB AND FEDERATION EMBLEMS-STICKERS-PATCHES

KNOW YOUR NEIGHBOR

To LEARN and SHARE

-

S E R V I C E

H E L P E L I M I N A T E L I T T E R P L E A S E

HELP