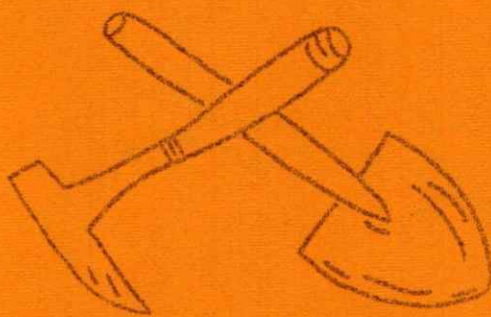
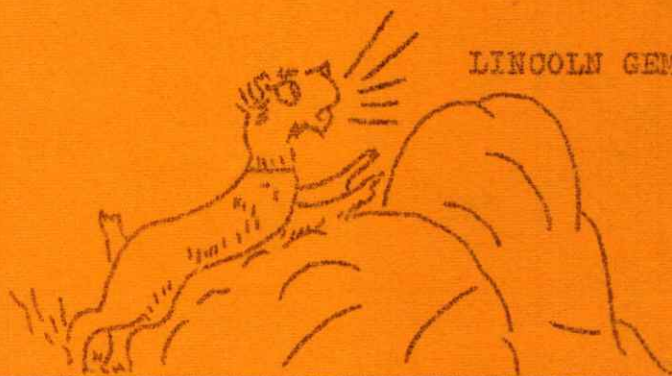


THE PICK & SHOVEL



LINCOLN GEM AND MINERAL CLUB, INC.

Lincoln, Nebraska



LINCOLN GEM AND MINERAL CLUB, INC.



- President. John A. Lewis
6225 Judson St.
- First Vice-President Mrs. V. A. Carveth
2526 South 11th St.
- Second Vice-President. Robert Bainbridge
1032 Charleston
- Recording Secretary. Mrs. John A. Lewis
6225 Judson St.
- Treasurer. Mrs. Arthur Bloyd
2818 North Cotner Blvd.
- Corresponding Secretary. Mrs. Maurice Tracy
3601 South St.

* * *

MEETINGS - FOURTH SATURDAY - SEPTEMBER THROUGH MAY
Roberts Dairy Party Room - 211 So. 20th St.

* * *

Affiliated with:

- Midwest Federation of Mineralogical and Geological Societies
- American Federation of Mineralogical Societies

* * *

BULLETIN EDITOR - Mrs. Maurice Tracy
3601 South Street
Lincoln, Nebraska

Telephone IV 8-5341

THE PRESIDENT'S PAGE

Dear Fellow Rockhounds;

I deeply appreciate the honor that you have bestowed on me by electing me to be the club president for 1962. With the fine slate of officers to help, I know that we shall make this a year of growth for you and the club. The motto that the officers have sworn to uphold for this year is

GROWTH FOR YOU IN '62

During this year we hope that each and every rockhound will INCREASE their vocabulary, their skills, their ability to recognize rocks and minerals and of course their pile of rocks in the basement. "The dealers hope that you will see fit to increase your equipment also". If any person fails to grow in at least one of these fields, they will be reduced in rank from a Rockhound to a Rockite. (A Rockite is a Rockhound that has a great density).

At one meeting last year, a near calamity happened when a member was forced to remove his belt so admiring and envious friends could get a closer look at the buckle. If others are like me, they like to see something at the meetings, so let's start an ADMIRATION TABLE. Here one or two members will bring their new unusual, curious stones or minerals and display them. They should be on hand a short time before and after each meeting to answer the many questions (also hear the praises and see the envious looks). Thus we might share their knowledge and experience. If you have something please volunteer for the month that you would like to show, otherwise you may be drafted to show for any month.

The officers have not yet picked all of the committees but if you are given a job we hope that you will serve and if you are not given a job we hope that you will raise particular thunder until you are given a job.

Surely every rockhound hinted to Santa Claus for some of the things that they wanted such as new equipment for hunting, polishing or displaying. What else is there to ask for? My wife received a "Gem Scoop" but the way she looked at me led me to believe that she did not think that this gift came from the bottom of my heart. To prove I had no ulterior motive, I shall buy her another "Gem Scoop" for her other hand when her birthday comes.

For all of those old members who have let their jobs or many other duties interfere with their hobby, we would like to suggest,

BEGIN ANEW IN '62.

John A. Lewis



SATURDAY - JANUARY 27, 1962

Regular Meeting - 7:30 p.m.

Program - Two motion pictures about "Gems and Minerals"

Robert's Dairy Party Room
211 South 20th Street

DUES ARE DUE FOR '62

EVERETT LAPIDARY SHOP

2941 North 65th Street

Lincoln 5, Nebraska

Phone IN 6-6204

See Us For

FINDINGS

ROUGH SLABS

FLUORESCENTS

MACHINERY

Our 7th year as Capitol City's First Rock Shop

SATISFIED CUSTOMERS ARE OUR BEST ADVERTISEMENT



W E L C O M E

Bruce Danner
1935 North 54th Street

Roger Simmons
2970 South Street

Floyd Fellows
5350 Gladstone

*Judy Weber
*Terry Lee Weber
2933 Potter

Mrs. Frank Krejci
215 North 27th Street

* - Junior Members

We are happy to welcome these new members to our Club. Please add their names to your copy of "Who's Who and Where".

* * *

	<i>Something to Crow about</i>	Used Motors
	Choice Slabs	Lapidary Equipment and Supplies
	Cabochons	Rough Cutting Material
<u>C L Y D E B E N H A M</u>		
1711 Harwood		GA 3-4163

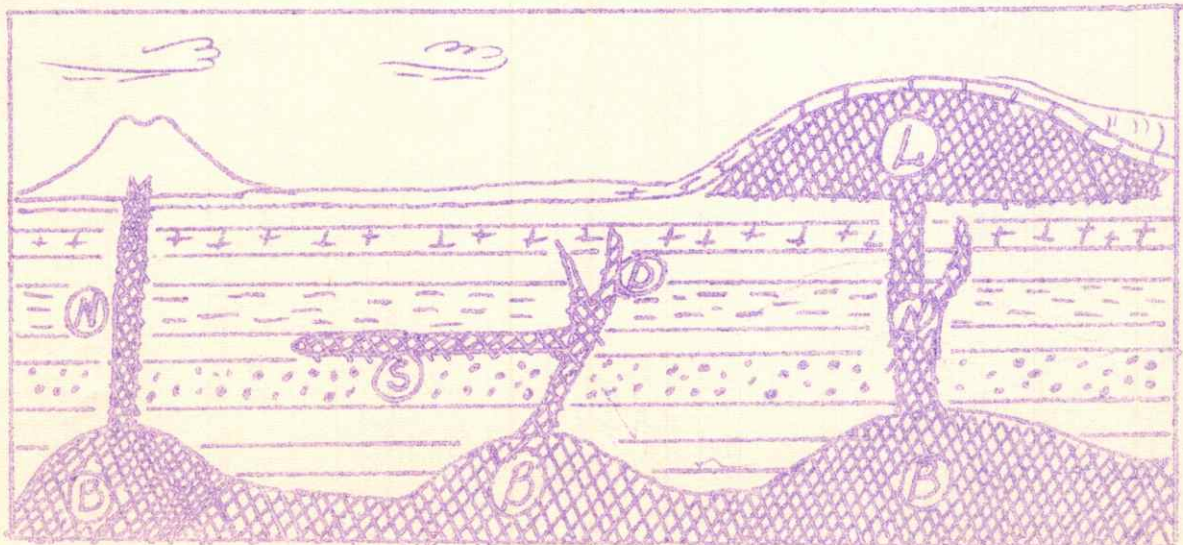
The City Recreation Department is starting a lapidary session for those people who have had three sessions or more. This will be for ten weeks and the fee will be \$10.00. If you are interested, call the City Recreation Department office and register with them. Only a limited number can be accommodated.

* * *

IMPROVE YOUR VOCABULARY

INSTRUCTIONS: Fill in the blanks; Be prepared to give these answers at the next rock meeting. (WIN A GOLD STAR BY TEARING OUT THIS PAGE AND HAVING ALL OF THE ANSWERS CORRECT) Bring the completed page to the January meeting.

- (1) One of the three main types of rock that has solidified from a molten mass or state is the. rocks
- (2) If the molten rock reached the surface and erupted onto the land or under the sea, it is called.
- (3) The hot, molten or plastic rock that does not break through the surface or erupt is called.
- (4) A dome shaped mass of igneous rock (Figure L in the drawing below) that has been forced between older formations, most of which lie in layers or beds is called a.
- (5) Huge masses of rock intruded into formations that already were folded and uplifted (B) are called _____
- (6) An upright or steeply inclined wall of igneous rock formed by magma that was forced into a break or crevice (shown by D below) is called a.
- (7) Sheets of igneous rock that, while viscous, were forced between the strata and then hardened (S) _____
- (8) The columns of hardened magma leading to volcanoes though some lead to the structures labeled (L) below, are called. (N) _____



SIMMONS RENTAL

AND

LAPIDARY SERVICE



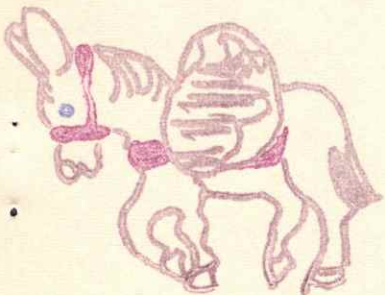
CRAZY LACE AGATE FROM MEXICO
SLABS OR ROUGH

• PYRITE FROM MEXICO



TIGER EYE FROM AFRICA

• RHODOCHROSITE FROM MEXICO



SPHALERITE FROM MISSOURI
BLACK & RUBY JACK

GALENA FROM MISSOURI

WAVELLITE FROM ARKANSAS

OPAL FROM AUSTRALIA

The club has received letters from several of the committee chairman of the Midwest Federation giving us information regarding their particular committee and their plans. I have replied to their requests for information and the Board of Directors will take up other matters. I am sorry we can not publish all of these letters in their entirety but I will give you excerpts from them.

The Uniform Rules are being corrected and revised by a committee of the American Federation. Our Midwest Rules Committee is keeping in close touch with Mr. Bob Hagglund, Chairman of this committee.

The Midwest Federation now owns fifty all metal, collapsable show cases. These are available to all clubs for show purposes. We understand a story about these cases is to appear in Earth Science Magazine.

If any of you are interested in car emblems or lapel pins they can be purchased from the Midwest Federation for 75¢ each.

In the making -- available in the very near future -- a directory of program aids. It will list a wide variety of programs and tell us how to go about getting them. Should be valuable to both the program and educational committees.

One section will list more than three hundred movie films, both free and rental, available to groups such as ours. It will describe the subject material of each film --tell us where it may be obtained.

Another section will be set up as a speaker's guide. It will list slide programs, demonstrations, speakers, and other personally conducted programs. It will describe the program, tell whom to contact, and let us know the approximate area where it is available.

* * *

A diamond is one of the hardest substances known to man - particularly to get back.

* * *

MIDWEST FEDERATION
L E T T E R - A - M O N T H
for January 1962

Subject: The Letter-A-Month
By: Leo Yanasak
President Midwest Federation

One of the most serious problems of all Regional Federations, and also the American Federation, is getting information to the individual clubs and thus to the club members. Some tried issuing bulletins, others published an official magazine, still others tried to get information out by buying space in publications. For one reason or another these were all found to be unsatisfactory. They were either too late or too expensive, or did not reach the members.

About two years ago certain members of the Midwest came up with the idea of sending a letter a month to every club in the Midwest. These letters were to be written by officers or members of the Midwest having important information to give. They were to be short and to the point. This idea turned out exceedingly well and is being seriously considered by other Regional Federations.

At present about 250 copies of the letter are mailed each month. They are sent to Liaison Officers of all Midwest clubs, to all Officers of the Midwest Federation, to the principle officers of the other Regional Federations, and to the officers of the American Federation. These letters cost the Midwest in printing and mailing about 6¢ apiece or about \$15.00 per month, a small cost indeed for the results obtained.

There is just one concern which somewhat mars the picture. We actually have in the Midwest, Liaison Officers who make very little or no effort to present the letter to their members. It is the hope of the Midwest Board that each club will have the letter read, or at least briefed, as a part of their business meeting. Just laying it on the table and saying "Here it is" will hardly do the job. As a result the clubs that follow this practice do not know what their own Federation is doing. Are you one of them?

Sincerely,

/s/

Leo W. Yanasak
President