

The Lincoln Gem & Mineral Club, Inc.
Proudly Invites You To It's

36th Annual Show

March 26-27, 1994

Pershing
Lower Level

A JURASSIC FAIR

The Most Fun EARTH'S Had in 62 Million Years

JEWELRY GEMS ROCKS MINERALS FOSSILS

DISPLAYS DEALERS PROGRAMS

For Families to Enjoy Together

Special Area For Kids
GEM DIG-ROCK RACES



DOOR
PRIZES

ADMISSION \$3.00

Children under 12-Free with Adult

\$1 OFF COUPON

Saturday, March 26
9 AM---8 PM
Sunday, March 27
10 AM--5PM

Admission \$2.00

One Coupon good for
family or group

Children under 12-Free with Adult

Pershing Auditorium between M & N on 15th St. Lincoln, NE

The Lincoln Gem & Mineral Club, Inc.
Proudly Invites You To It's

36th Annual Show

March 26-27, 1984
Pershing Aud-
Lower Level

A JURASSIC FAIR

The Most Fun EARTH'S Had in 62 Million Years

JEWELRY GEMS ROCKS MINERALS FOSSILS

DISPLAYS DEALERS PROGRAMS

For Families to Enjoy Together

Special Area For Kids
GEM DIG-ROCK RACES

DOOR

ADMISSION \$3.00

Children under 12-FREE (With Adult)

PRIZES

\$1 OFF COUPON

Admission \$2.00

One Coupon good for

family or group

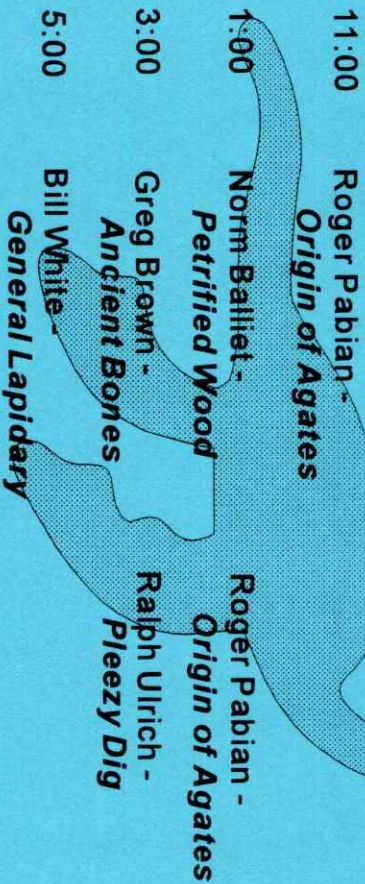
children under 12-FREE (with Adult)

Saturday, March 26
9 AM---8 PM
Sunday, March 27
10 AM--5PM

Pershing Auditorium between M & N on 15th St. Lincoln, NE

Programs

Saturday Sunday



11:00	Roger Pabian - <i>Origin of Agates</i>	Roger Pabian - <i>Origin of Agates</i>
1:00	Norm Balliet - <i>Petrified Wood</i>	Ralph Ulrich - <i>Pleezy Dig</i>
3:00	Greg Brown - <i>Ancient Bones</i>	Bill White <i>General Lapidary</i>
5:00		

Show Committee

Show Chair	Billie Heffelbower
Dealers	Francis Belohlavy
Floor/Cases	Jerry Moore
Publicity	Dave Heffelbower
Gate/Security	Vera Lyman
Working Shop	John Harrison
Special Displays	Kevin Schwartzman
Ribbons/Awards	Kathy Schwartzman
Youth Activities	Pam Killian/ Kay Jergens
Saturday Buffet	Bill & Shirley/Rockel
Competition	Ralph Ulrich
Rock Races	Ed 'Lightning' Ridge
Programs	Billie & Committee
Gem Dig	UNL Geology Club
Demonstrators	Dave Heffelbower
Member Booth	Shirley Rockel

Jerry Moore, our Floor Chairman, had quadruple by-pass surgery in mid-February. We feel his pain and wish him well. My special thanks to the Show Committee Members who have pulled together to make sure the 'Show Will Go On'.

Lincoln Gem

& Mineral Club

Proudly Welcomes You

To the

36th Annual Show

A JURBASIC FAIR

THE MOST FUN EARTH'S HAD IN 62 MILLION YEARS

March 26th & 27th

Pershing Auditorium

226 Centennial Mall South

Show Hours

Saturday - 9AM - 8PM

Sunday - 10AM - 5PM

President's Welcome

As President of the Lincoln Gem & Mineral Club, I would like to take this opportunity to welcome you to our 36th Annual Show. We are very proud of our tradition of fine shows. I am sure you will find much to interest you at our show this year. If this is all new to you, I offer the following suggestions:

- Go slowly and observe
- Visit our Dealers
- Peruse the Exhibits
- Observe the Demonstrators
- Attend a Program
- Ask Questions
- Ask Questions
- Ask Questions
- Ask Questions
- Ask Questions

If you have questions about anything, **ASK SOMEONE.**

If you would like to become involved in the lapidary hobby, stop by our LGMC Booth, they have information about the club and how to become a member.

Charles Woodrige

Show Chair Welcome

It is my pleasure as show chair, to extend a big **JURRASIC WELCOME** to all of you. Please enjoy yourselves. I am very proud of our outstanding displays, demonstrators, dealers and programs. My thanks to the many people on my show committee and working club members, who have put in so much time to make this show a reality.

I'm glad you came, to help the dinosaurs have a fair. I hope you will leave with a wonderment and a little more knowledge about the beauty of our earth you see all around you.

Billie Hoffbauer

1995 Show Chair - John Harrison

Some of Our Special Exhibits

Latvian Amber & Jewelry, Courtesy of several individuals

UNL State Museum, Roadside Fossil Display
Ashfall Fossil Beds, State Historical Park
LGMC-State Museum, Nebraska Plesiosaur
Fossil Replicas from Earth's Past
Dinosaur Fossils and Baltic Amber
Jeweled Indian Elephant
Thumbnail Minerals
Fluorescent Materials
Lapidary techniques, LGMC Study Group
Nebraska Materials Competition

Gem Dig - UNL Geology Club

Prospect for your own gems from the special gravel bar.

Find such 'gems' as garnets, topaz, sapphires, polished stones, and many others.

Thanks to Charles Woodrige for assistance in securing materials for the gem dig and competition prizes.

Rock Races

Compete in the Jurassic 500, gravity powered, pollution free lithic speedsters racing for the finish line. Bring your own or drive one our loners.

Ed 'Lightning' Ridge, Race Commissioner

Lentz Lapidary Inc.
11740 South Oliver, Rt.2, Box 135
Mulvane, KS 67110

Prisma Enterprises
Box 218
Timnath, CO 80547

Rusty's Rock Shop
4106 Buchingham Dr.
Decatur, IL 62526

Teton Gems
P.O. Box 5402
Boise, ID 83705

JJ&L Rocks & Minerals
330 Locust St.
Hickman, NE 68372

Johnson Agate Co.
305 W 7th St.
Mankato, MN 56001

The Simons
Box 1121
Lincoln, NE 68501

Schooler's Minerals & Fossils
3814 Harrison
Kansas City, MO 64109

West Side Agates
115 N. Franklin P.O. Box 1393
Ames, IA 50010

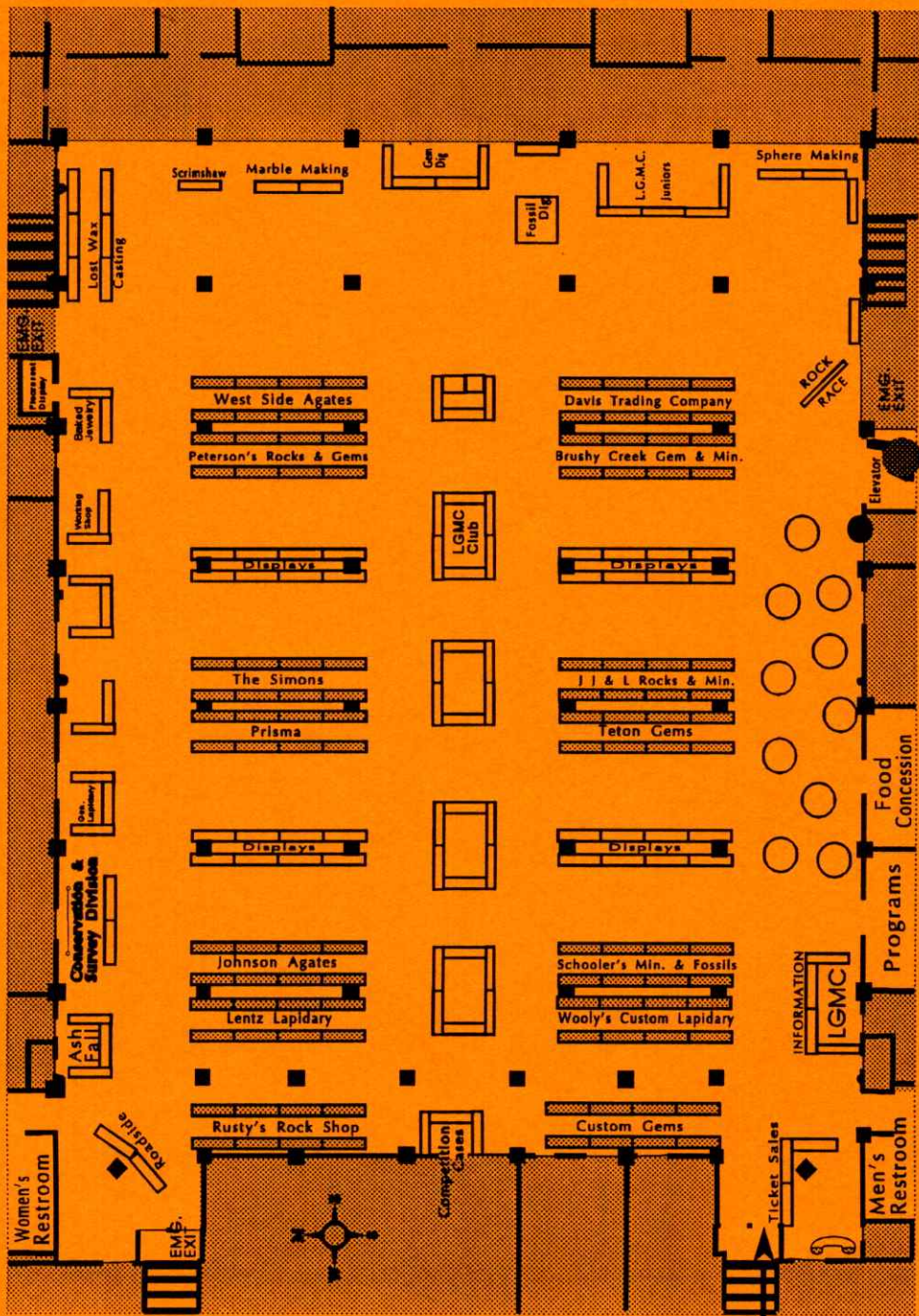
Peterson's Rock & Gem
200 W. 6th St., Rt. 1 Box 1
Oakland, NE 68045

Custom Gems
8047 Fredrick St.
Omaha, NE 68124

Wooly's Custom Lapidary
836 S. 31st St.
Lincoln, NE 68506

Davis Trading Company
Topeka, KS

Brushy Creek Gems & Minerals
Boone, IA



Lincoln Gem and Mineral Club, Inc.

takes great pleasure in presenting

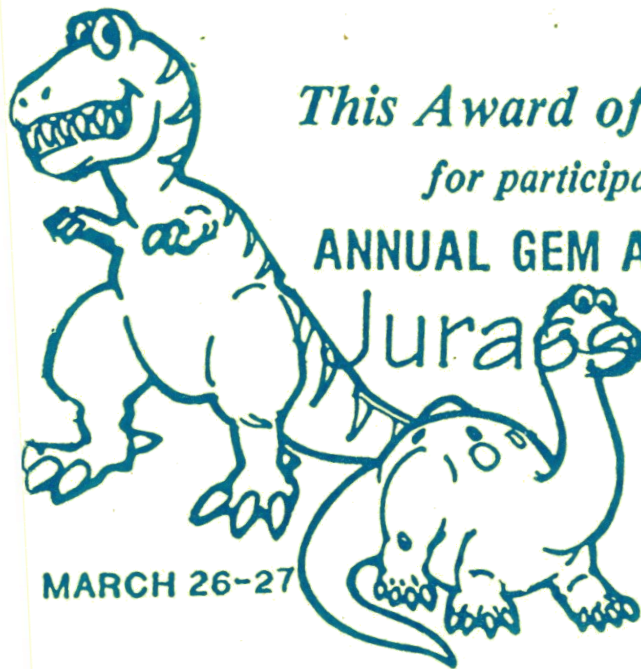


This Award of Appreciation

for participation in the 36th

ANNUAL GEM AND MINERAL SHOW

Jurassic Fair



MARCH 26-27



Charles A. Woodring
PRESIDENT

Billie Hufferbauer
SHOW CHAIR.

LINCOLN GEM & MINERAL CLUB, INC.

36th Annual Show Report - March 26-27, 1994

INCOME:

Retail Dealer Space (14)	4200.00
Paid Demonstrators (4)	100.00
Rock Races	105.56
Gate Saturday	2591.00
Sunday	<u>1849.00</u>
From Geology 'Gem Dig'	<u>158.00</u>

Total Income \$9003.56

EXPENSES:

Floor-Rental	1995.00
" Ins.	100.00
" Security	300.00
Electrics	146.25
" Table cov.	<u>149.10</u>
Advertising	1482.84
Discount Cards	105.61
Recognitions	139.36
Hand-out Programs	164.45
Sat.Night Buffet	281.65
Lecture Programs	150.00
Dealer Chair Exp.	40.44
Special Competition	80.41
Gem Dig Materials net	130.30
Rock Races Expense	81.83
Chairperson Expenses	91.45
Miscellaneous Expense	66.98
State & City Sales Tax on Gate	<u>286.43</u>

Total Expenses 5792.10

Net Gain on Show \$3211.46

Youth Members miscellaneous activities 207.00

Attendance :

Saturday	491 @ 3.00	plus	559 @ 2.00	=	1050	\$2591.00
Sunday	<u>334</u> @ 3.00	plus	<u>423</u> @ 2.00	=	<u>757</u>	<u>\$1848.00</u>
			plus	\$1.00 from floor	1.00	
Totals	825		982		1807	\$4440.00



#3.00 Ticket
Regular Admission

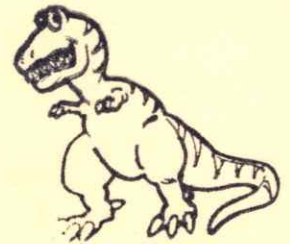
~~6:00 pm~~ ~~7:45~~
to close



#2.00 Ticket
with discount Coupon

~~6:00 pm~~ ~~8:15~~
to close

Children under 12 - FREE w/adult



Have out 1 orange - Lady said she didn't get

\$1 OFF COUPON

Saturday, March 26

9 AM---8 PM

Sunday, March 27

10 AM---5PM

Admission \$2.00

One Coupon good for

family or group

children under 12 - FREE

Pershing Auditorium between M & N on 15th St. Lincoln. NE

5138336



3.00

Ticket
Regular Admission

545938

~~528103~~

~~545206~~

~~12:30pm~~



2.00

Ticket
with discount Coupon

Children under 12 - FREE w/ adult



KFOR =
Excellent coverage
FROGV

MONDAY

News You Can Use In The Week Ahead

Pancakes — Members of Lincoln's Ser-toma Clubs will serve pancakes, sausage, juice and other beverages during the 33rd annual Pancake Jamboree, held from 7 a.m. to 7:30 p.m. Thursday at Pershing Auditorium, 226 Centennial Mall South.

Violets — African violets will be blooming at East Park Plaza during the Lincoln African Violet Society's annual spring show and sale Friday and Saturday. In addition to show plants, there will be a selection of starter plants, leaves and supplies. Hours are: Friday, 10 a.m. to 9 p.m.; Saturday, 10 a.m. to 6 p.m.

Women — Soap-opera stars, beauty makeovers, fashions and cooking demonstrations will be part of the Lincoln Women's Show, held Friday through Sunday in the Bob Devaney Sports Center. Show hours are: Friday, noon to 9 p.m.; Saturday, 10 a.m. to 6 p.m.; Sunday, 11 a.m. to 5 p.m.

Gymnastics — Big Eight Conference coaches have picked the Nebraska gymnastic teams as favorites to win the team titles at the Big Eight Championships Saturday and Sunday in the Bob Devaney Sports Center. Men's

competition will start at 7:30 p.m. Friday. Women will compete Saturday, beginning at 7:30 p.m.

Spelling — Enhance your vocabulary at the adult spelling bee, sponsored by the Nebraska Literary Heritage Association at 7 p.m. Tuesday at P.O. Pears, 322 S. Ninth St. The cost is \$4 for spectators and \$30 for participants. For more information, call Barbara Hansen at 441-8512.

Town hall — Lancaster County senators have scheduled a town hall meeting Wednesday to give constituents a chance to share their views on pending legislation. The meeting will be held from 7 p.m. to 9 p.m. in the East Chamber of the state Capitol.

Gems — Gems, minerals and fossils, including finished jewelry and an amber collection, will be on display at the 36th annual Lincoln Gem and Mineral Show Saturday and Sunday in Pershing Auditorium, 226 Centennial Mall South. Show hours are Saturday, 9 a.m. to 8 p.m.; Sunday, 10 a.m. to 5 p.m.

— Compiled by Lucy Olson

Lincoln Star 3-21-94

The Lincoln Gem & Mineral Club
presents the 36th Annual Show
A JURASSIC FAIR
Jewelry — Gems — Rocks — Minerals & Fossils

March 26 9am-8pm
March 27 10am-5pm **Pershing Auditorium**

Admission \$3.00 (12 & over)
Save \$1.00 off admission with ad



The Most Fun Earth's Had In 62 Million Years

"Great"
Sun
Pg 7H
3-2094

The Lincoln Gem & Mineral Club
presents the 36th Annual Show
A JURASSIC FAIR
Jewelry — Gems — Rocks — Minerals & Fossils

March 26 9am-8pm
March 27 10am-5pm **Pershing Auditorium**

Admission \$3.00 (12 & over)
Save \$1.00 off admission with ad.



The Most Fun Earth's Had In 62 Million Years

Thurs 24
Fri 25
Sat 26

WEEKEND WATCH

Best Bets For Your Leisure Time

Jurassic gems

"A Jurassic Fair," the annual Lincoln Gem and Mineral Club Show, sparkles at Pershing Auditorium, 226 Centennial Mall South, from 9 a.m. to 8 p.m. Saturday and 10 a.m. to 5 p.m. Sunday. Admission charge.

Down the bunny trail

An Easter bunny egg hunt hops into town at 11 a.m. Saturday in the Northeast YMCA, 2601 N. 70th St. To register, call 464-7481.



More hopping

The Big Eight gymnastics championships are this weekend at Bob Devaney Sports Center. Men's competition begins at 7:30 p.m. Friday, and women compete at 7:30 p.m. Saturday. Admission charge.

New movies

New movies this weekend include "The Paper" (with Michael Keaton and Glenn Close) at the Douglas and "Six Degrees of Separation" (with Stockard Channing and Donald Sutherland) at the Cinema. "What's Love Got to Do With It," the powerful biography of Tina Turner, arrives at local video stores this week.

Historic shopping

The Lancaster Antique Show and Sale is set at the State Fair Grounds Ag Building, 9 a.m. to 6 p.m. Saturday and 10 a.m. to 5 p.m. Sunday. Or, when you visit shops in the city's Historic Haymarket this weekend, you can participate in the annual Egg-Stravaganza, 10 a.m. to 6 p.m. Friday and Saturday and 1 to 5 p.m. Sunday, with games, prizes and gifts.

Sweet violets

The Lincoln African Violet Society's Spring Show and Sale is 10 a.m. to 9 p.m. Friday and 10 a.m. to 6 p.m. Saturday at East Park Plaza, 66th and O streets.

Take a hike

A trained naturalist leads free guided hikes through the Pioneers Park Nature Center this weekend — a Spring Peeper Hike at 2 p.m. Saturday and a Wildlife Celebration Hike at 2 p.m. Sunday.

— Compiled by Mary Kay Roth

Lincoln Star

Friday - Front Page

LINCOLN GEM & MINERAL CLUB, INC.
 36th Annual Show
 Sat. March 26 9am - 8pm • Sun. March 27 10am - 5pm
 Pershing Auditorium Lower Level

A JURASSIC FAIR
 Jewelry ♦ Gems ♦ Rocks ♦ Minerals ♦ Fossils
 Special Area for Kids ♦ Door Prizes

Admission \$3
 Under 12-FREE (with Adult)

\$1 OFF - EACH MEMBER IN PARTY WITH AD

Hurry! Before This Offer Becomes EXTINCT!

World Herald

Omaha

LINCOLN GEM & MINERAL CLUB, INC.
 36th Annual Show
 Sat. March 26 9am - 8pm
 Sun. March 27 10am - 5pm
 Pershing Auditorium Lower Level

A JURASSIC FAIR
 Jewelry ♦ Gems ♦ Rocks ♦ Minerals ♦ Fossils
 Special Area for Kids ♦ Door Prizes

Admission \$3
 Under 12-FREE (with Adult)

\$1 OFF - EACH MEMBER IN PARTY WITH AD

Hurry! Before This Offer Becomes EXTINCT!

6

Lincoln Star

Pershing Auditorium CALENDAR OF EVENTS



MANAGED BY
OGDEN ENTERTAINMENT SERVICES

226 CENTENNIAL MALL SOUTH, P.O. BOX 81126, LINCOLN, NE 68501

MARCH, 1994

HARLEM GLOBETROTTERS

The World's Greatest Basketball Show!



DATE	EVENT	TIME	ADMISSION
TUE 1ST	DISTRICT A-1 BOYS' BASKETBALL TOURNAMENT	7:30 PM	ADULTS-\$3.00 STUDENTS-\$2.00
THU-3RD FRI-4TH	NEBRASKA GIRLS' STATE HIGH SCHOOL BASKETBALL TOURNAMENT	9:30 AM EACH DAY	ADULTS-\$4.00 STUDENTS-\$3.00 PER SESSION
THU-10TH FRI-11TH	NEBRASKA BOYS' STATE HIGH SCHOOL BASKETBALL TOURNAMENT	9:30 AM EACH DAY	ADULTS-\$4.00 STUDENTS-\$3.00 PER SESSION
SAT 12TH	HARLEM GLOBETROTTERS — THE WORLD'S GREATEST BASKETBALL SHOW! <i>*Seniors & Youth Save \$2 With TREATSEAT Coupon From Target*</i>	7:30 PM	RESERVED \$12.25* \$10.25* LIMITED VIP SEATING*
SAT-12TH SUN-13TH	FLEA MARKET	10 AM-5 PM DAILY	75 CENTS
WED-16TH THU-17TH FRI-18TH SAT-19TH SUN-20TH	'94 SESOSTRIS TEMPLE'S SHRINE CIRCUS	WED: 7:00 PM THU: 1:30 PM & 7:00 PM FRI: 1:30 PM & 7:00 PM SAT: 10:00 AM, 2:30 PM & 7:00 PM SUN: 1:00 PM & 4:30 PM	RESERVED-\$8.50
TUE 22ND	LINCOLN CRISIS PREGNANCY CENTER DESSERT BENEFIT	7:00 PM	\$10.00-ADVANCE PURCHASE REQUIRED CALL 475-2501 FOR INFO
THU 24TH	SERTOMA CLUB'S ANNUAL PANCAKE FESTIVAL	7:00 AM-7:30 PM	ADULTS & YOUTH-\$3.00 CHILD UNDER 5-FREE
THU 24TH	DC TALK IN CONCERT WITH GUEST AUDIO ADRENALINE	7:30 PM	RESERVED \$14.75* IN ADVANCE \$17.75* DAY OF SHOW
SAT-26TH SUN-27TH	"JURASSIC FAIR" - 36TH ANNUAL LINCOLN GEM & MINERAL SHOW	SAT: 9 AM-8 PM SUN: 10 AM-5 PM	ADULTS-\$3.00 CHILDREN UNDER 12 FREE WITH ADULT
SAT-26TH	"UNDER THE BIG TOP" - MULTI KEYBOARD & STRING PLAYERS CONCERT	7:00 PM	\$5.00 GENERAL ADMISSION

EVERY MONDAY, 12 NOON, ALCOHOLICS ANONYMOUS, MEETING ROOM POSTED

* PRICES MARKED (*) INCLUDE PERSHING FACILITY MAINTENANCE ASSESSMENT *

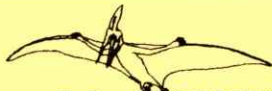


CLIP & SAVE

• CHARGE TICKETS BY PHONE 475-1212 • FOR INFORMATION 441-7500 •
PERSHING BOX OFFICE IS AN EXCLUSIVE TICKETMASTER FACILITY AND TICKET CENTER
BOX OFFICE HOURS 9:30 AM TO 5:30 PM MON-FRI.

CLIP & SAVE

Sun. (Lincoln Journal-Star) Focus - 2-27-94



36th ANNUAL GEM & MINERAL SHOW " A JURASSIC FAIR "

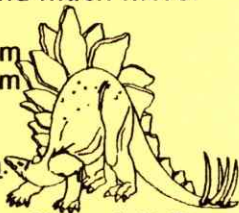
Special Exhibits-Latvian Amber and Dinosaur Memorabilia,
including a cast of "OUR OWN" PLESIOSAUR HEAD

Triassic Woods, Educational Programs, Dealers, Demonstrations
Gem Digs, Rock Races, hundreds of fine displays, and much more.

MARCH 26-27, Saturday 9:00 am to 8:00 pm
1994 Sunday 10:00 am to 5:00 pm

Admission \$3.00 (12 and over)

This card worth \$1.00 off regular admission.



PERSHING AUDITORIUM on 15th Street between M and N Sts.

Door Prizes !!

LINCOLN GEM & MINERAL CLUB, INC.

PO Box 5342

Lincoln, Nebraska 68505-0342