

# Lincoln Gem and Mineral Club, Inc.

P. O. Box 5342

Lincoln, Nebraska 68505

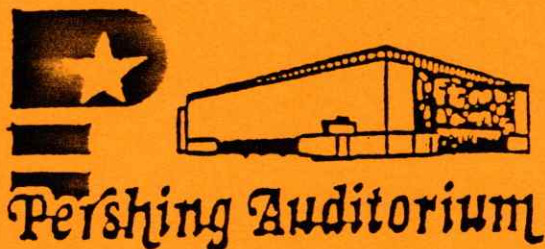
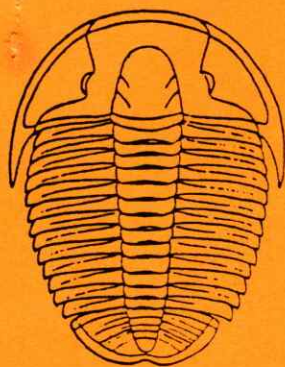


*Invites you to attend its*

Big 34th Annual

# Gem & Mineral Show

March 21, 22, 1992



226 CENTENNIAL MALL SOUTH

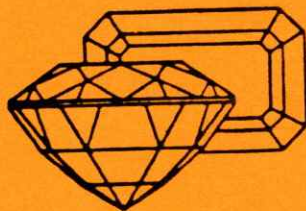
Tumblers - Dealers - Programs - Jasper - Rough

Agate - Jade - Fossils - Minerals - Saws

Turquoise - Displays - Findings

- Junior and Family Activities -

Jewelry Maker's Supplies --- and Much More



*Newspaper*

*Show Flyer*



-----COUPON-----



### SHOW HOURS:

Saturday, March 21, 1992 9:00 - 8:00

Sunday, March 22, 1992 10:00 - 5:00

### ADMISSION

Adults.....\$2.00

Children, under 8,  
free with adult.



This coupon good for 50 cents off each adult admission.

## WELCOME

Once again we have prepared an outstanding show for your enjoyment. There are features here for everyone with an interest in the field. Please note that we have several areas to which we wish to direct your attention:

(1) our outstanding dealers with a wide range of items for your pleasure;

(2) a remarkable group of special features;

(3) our special programs which are scheduled for both Saturday and Sunday.

(4) the individual displays by club members, dealers, and other interested participants.

We wish all of you an interesting and educational visit. Also, we wish to offer an invitation to all to participate in next year's show as club members.

David Heffelbower, President

### Your show committee:

Chairman, Phyllis Parks  
Asst. Chairman, Floor Planning,  
Francis Belohlavy  
Asst. Chairman, Display Coordinator,  
Jerry Moore  
Dealers, Jim Parks  
Publicity, Roger Pabian  
Demonstrators, Kevin Schwartzman  
Special Features, Norman Balliet  
Tickets/ Security, Vera Lyman  
Recognitions, Marie Wells  
Special Programs and Lectures,  
David Heffelbower  
Special Activities Coordinator,  
Gem and Fossil Dig, Contests  
Charles Wooldridge  
Working Shop Displays, Fred Holbert  
Gran-Premio Rock Races, Eddie  
"Lightning" Ridge  
Youth Activities, Pam Killion  
Saturday Evening Activities,  
Shirley and Bill Rockel  
General Support, Consultation,  
John Harrison, Billie Heffelbower

## PROGRAMS AND LECTURES FOR YOUR ENJOYMENT

Saturday, March 21, 1992

9:30 A.M. Free Forming Gems, Bill White, Independence, MO  
11:00 A.M. Observations on Agate, Roger K. Pabian, Lincoln, NE  
12:30 P.M. Gemstone Identification Bob Fixter, Lincoln, NE  
2:00 P.M. Ashfall State Park Rick Otto, Pierce, NE  
3:30 P.M. 3-D Slide Show Dr. Walter Erbach, Lincoln, NE  
5:00 P.M. Wonderful World of Gemstones, Sound Film  
6:30 P.M. Gem Faceting Ralph Ulrich, Lincoln, NE

Sunday, March 22, 1992

10:30 A.M. Jewelry Design Jack Anderson, Lincoln, NE  
12:00 NAOESCI Board Meeting  
2:00 P.M. Roadside Archeology John Ludwickson, Lincoln, NE  
3:30 P.M. Gemstones of America, Video Tape

## SPECIAL HAND'S ON ACTIVITIES

Gemstone dig, find your own precious gemstones in Nebraska's largest indoor gravel pit. 50 cents per 4 oz. cup of gem bearing aggregate. Operated by UN-L Geology Club.

Fossil dig, find your own late Pennsylvanian and early Permian marine fossils from eastern Nebraska's ancient seas. Free.

Grow your own! Learn the fascinating techniques of growing cave formations in your own home. A fun way for the younger set to learn about saturation, capillary action, evaporation, and crystallization in your own home. Sponsored by LGMC youth.

## SOME FEATURE DISPLAYS

Nomadic jewelry. See some of the gems of peoples who inhabit the world's newest nations of central Asia. Linda Plock.

Nebraska's largest! 55 carat smoky quartz cut from rough found near Steele City, Nebraska. Donovan Harris.

Mass mortality. See fossils from Nebraska's Ashfall Fossil Beds State Historical Park, Antelope County. Rick Otto.

## YOUR DEALERS

L & R Lapidary, Janesville, MN  
West Side Agates, Ames, IA  
Simon's Lapidary, Lincoln, NE  
Teton Gems, Boise, ID  
Davis Trading Co., Topeka, KS  
Schooler's Minerals & Fossils,  
Blue Springs, MO  
Johnson Agate Co., Mankato, MN  
Rusty's Rock Shop, Decatur, IL  
J J & L Rocks & Minerals,  
Hickman, NE  
Honeycutt's, Fairfield, IA  
Lentz Lapidary, Inc., Mulvane, KS  
Wisconsin Gems & Custom Jewelry,  
Owen, WI  
The Gem Shop, Cedarburg, WI  
Custom Gems, Omaha, NE

## WORKING DEMONSTRATORS

Ed Junker, Wood River, NE, Sphere making.  
Connie McCartney, Grand Island, NE Scrimshaw.  
Mary McCartney, Grand Island, NE Metal casting.

## OTHER EVENTS

Nebraska's Best---contest featuring Nebraska's best mineral, fossil, and gem specimens. Judging 4:00 P.M., Saturday  
Working lapidary demonstrations---see faceting, free forming, cabochon cutting, and griffin grinding, to mention but a few.

Lincoln Gem & Mineral Club, Inc.  
P.O. Box 5342 Lincoln, NE 68505



## 34th Annual Show

## PROGRAM

## Pershing Auditorium



Saturday, March 21, 1992, 9:00 - 8:00  
Sunday, March 22, 1991, 10:00 - 5:00

WELCOME to our 34th Annual Gem and Mineral Show. We'd like to share some of our History - The Lincoln Gem & Mineral Club was begun in January, 1955, through the interests and urging of Irl C. Everett and Rev. E.A. Sabin. They sent a letter to known interested persons with this question: "Have you been bitten by the 'rock bug?'" and to mention that there is no known human cure but it helps to get together with others and "yak." Thus a group was formed, held meetings, selected officers, talked 'rocks' and grew. In 1959 they incorporated then held the first LGMC Annual Gem & Mineral Show at the National Guard Armory.

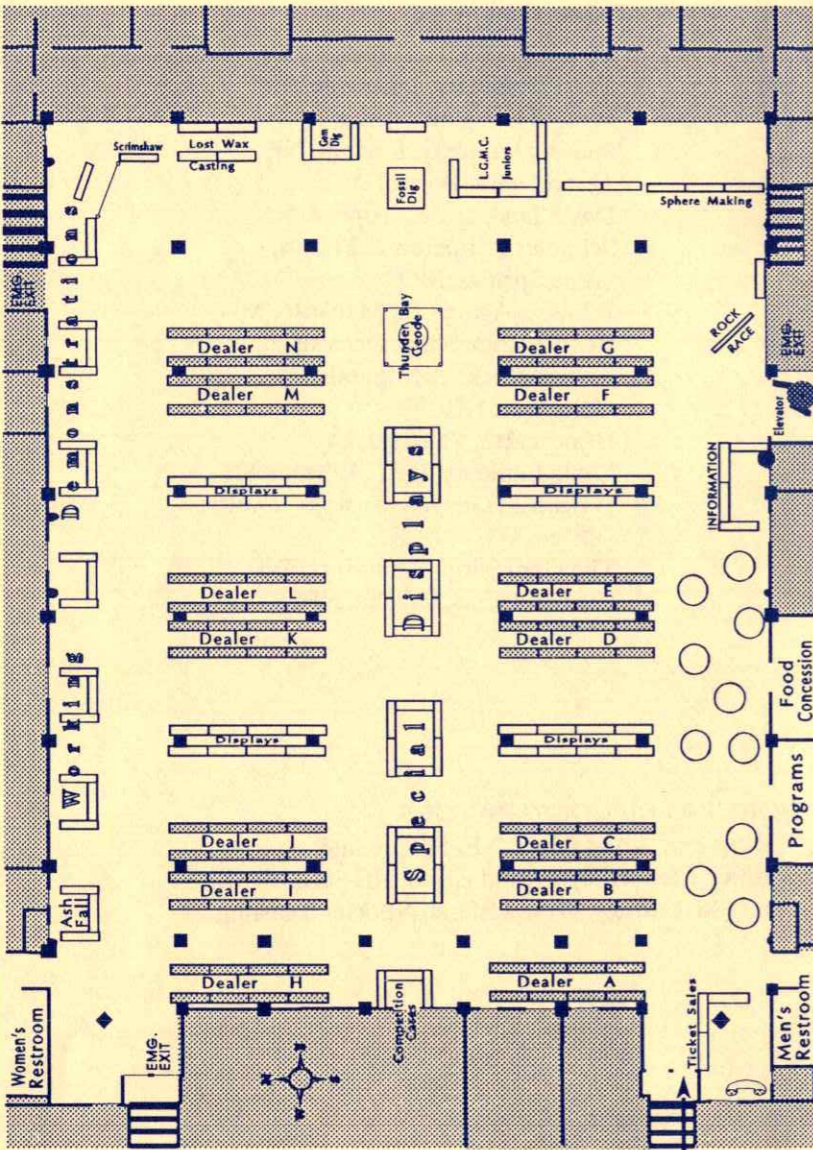
Through these 38 years Irl Everett "EV" has been a leader, friend and influence to the club. Ev held many offices including that of Show Chairman at our 1974 National Show. He was a dealer at all of our shows except one through 1985. At that time he started to go South for the winter and did not return in time to share our shows. In April of 1991 Irl asked to become a dealer at our 1992 Show and was accepted as he hoped to enjoy one more happy event with us before his retirement. Unfortunately health interfered and they had to cancel. Ev, we miss you and hope to see you when warm weather returns.

This Show is being dedicated to the Club's Founder and much Loved Member, Irl C. Evertee with many wishes for his continued attendance & enjoyment of our activities.

Phyllis N. Parks, Show Chairman

Perhaps the world of gems, minerals, fossils, geology, and the related earth sciences appeals to you. The place to find out more about these exciting areas of earth sciences is at the Lincoln Gem and Mineral Club. Members enjoy meetings, programs, field trips, and other educational activities. To find out more about our club, please stop by the information booth. We hope you will consider membership to continue your interests.

Don't forget our 1993 Show. It will be here at Pershing on Saturday, March 27, and Sunday, March 28. Plan on attending now. We'll be looking for you.



1992 Show - Financial Report as of April 30, 1992  
 (Subject to year-end audit)

INCOMES:

Retail Dealers (14 @ 250.00)	3500.00	
Paid Demonstrators	50.00	
Rock Races Gross	71.81	
Gate Admissions-Sat.	2540.00	
Sun.	1751.50	4291.50
<b>Total Incomes:</b>		<b>7913.31</b>

EXPENSES:

Floor Rent and Drapery	1924.80	
Floor-Table cover	64.11	
Insurance	50.00	
Security	288.00	
Miscellaneous	90.05	492.16
Publicity		821.64
Recognitions		94.23
Hand-out Programs		194.07
Sat. Eve. Buffet		291.95
Speakers/Slide Shows		200.00
Special Features/Exhibits		.00
Dealer Chairman Expense		11.18
Demo Chair Expense		.00
Special Activities-Gem Dig		50.00
Competition		91.15
Rock Races		15.20
Chairman Expenses		50.85
Miscellaneous Expense		53.94
Nebr. Sales Tax on Gate		274.77
<b>Total Expenses</b>		<b>4565.94</b>
Gain on 1992 Show		3347.37

Other Activities at Show:

Youth Group Wheels/kits etc.	418.55
Gem Dig-UNL Geology Club	278.00 net (Purchased 40.00 material from club)
Sealed bid auction of donated saw for club fund	175.00

Saturday -

Start # 030576  
(At Green)

# 2.00 ticket



(859)

End # ~~0437~~  
031435

Start # 151104  
(Red)

# 1.50 discount  
ticket  
(w/coupon)



(548)

End # 151652

Child (8) and older - regular admission  
Under 8 - free w/adult

Hand stamp to come back to Show on Saturday



MAR 2 1 PAID

MAR 2 1 PAID

Take any complimentary + stamp their hand.

Save coupon =  
Show Flyer

Write # on coupon  
How many came  
in @ discount  
EX = (5)

Newspaper

-----COUPON-----



SHOW HOURS:

Saturday, March 21, 1992 9:00 - 8:00  
Sunday, March 22, 1992 10:00 - 5:00

ADMISSION

Adults.....\$2.00  
Children, under 8,  
free with adult.



This coupon good for 50 cents off each adult admission.

Sunday -

Start # 456952  
(Bright green)

# 2.00 ticket

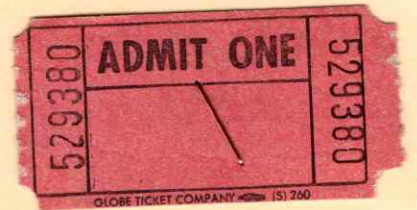


End # 457587

(635)

Start # 529381  
(Pink)

# 1.50 discount  
ticket  
(w/coupon)

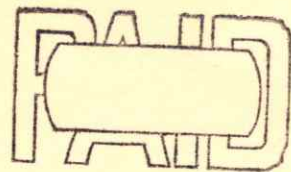
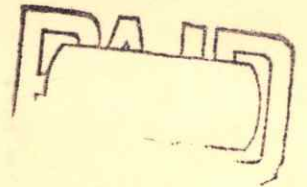


End # 529702

Child ⑧ and older - regular admission  
Under 8 - free w/ adult

Hand stamp to come back to Show on Sunday

MADE IN U.S.A.  
Oxford  
FILE FOLDER  
NO 40518  
ESSELTE



Take any complimentary tkts + stamp their hand

Newspaper

Save coupon →  
Show Flyer

White # on coupon  
How many came in  
@ discount.  
EX = ③

-----COUPON-----



SHOW HOURS:  
Saturday, March 21, 1992 9:00 - 8:00  
Sunday, March 22, 1992 10:00 - 5:00

ADMISSION  
Adults.....\$2.00  
Children, under 8,  
free with adult.



This coupon good for 50 cents off each adult admission.

# Calendar

## Lincoln

□ Admission charged

### music

**Faculty recital**, 3 p.m. today, Emerson Recital Hall, Rogers Center for Fine Arts, 50th Street and Huntington Avenue.

**Christ's Choraliars concert**, 7 tonight, Christ United Methodist Church, 4530 A St.

**UNL Graduate Student Woodwind Quintet**, 5:30 p.m. Tue., Kimball Recital Hall, 12th and R streets.

**Variety show, "Nite of Knights,"** 7:30 p.m. Tue., Fri., Sat., Lincoln Southeast High School auditorium, 2930 S. 37th St. □

**Musical, "Annie,"** 7:30 p.m. Tue., Pershing Municipal Auditorium, 226 Centennial Mall South. □

**Lincoln Symphony Orchestra concert**, with trumpet duo, 8 p.m. Tue., Lied Center for Performing Arts, 301 N. 12th St. □

**Musical, "Guys and Dolls,"** 7:30 p.m. Wed.-Fri., Lincoln High School Auditorium, 2229 J St. □

**Mr. Big concert, with Tall Stories**, 8 p.m. Wed., Centennial Room, Nebraska Union, 1400 R St. □

**Barbara Nielsen, trumpet recital**, 5:30 p.m. Thu., Westbrook Recital Hall, Westbrook Music Building, 11th and R streets.

**Jolyn Mosher, horn recital**, 6:30 p.m. Thu., Westbrook Recital Hall, Westbrook Music Building, 11th and R streets.

**Tom Ferry, masters organ recital**, 7 p.m. Thu., Kimball Recital Hall, 11th and R streets.

**Stephanie Miller, flute recital**, 7:30 p.m. Thu., Westbrook Recital Hall, Westbrook Music Building, 11th and R streets.

**Defiance, Ohio, College Chamber Singers concert**, 7:30 p.m. Thu., Northeast Community Church, 6200 Adams St.

**United States Navy Band concert**, 7:30 p.m. Thu., John Prash Activity Center, Lincoln Southeast High School, 2930 S. 37th St.

**Modern Jazz Quartet concert**, 8 p.m. Thu., Lied Center for Performing Arts, 301 N. 12th St. □

**The Keg, Karaoke** (country, rock 'n' roll sing-along), Wed.: 20th and O streets.

**Mountains Bar, LeRoy and the Liars**, Fri.; The Rocket Scientist's, Sat.; 311 S. 11th St.

**9th Street Blues**, jam session, Thu.; Tuna Fish Jones, Tue.; Urban Roots, Sat.; Ninth and L streets.

**Oscar's Bar, Finest Hour**, Tue.; Matt Sweet, Wed.; Confidentials, Fri.-Sat.; 800 O St.

**Pla Mor Ballroom, Sandy Creek Band**, Leaf Spring, 8-12 tonight; Greg Spevak, 8-11:30 p.m. Wed.; The Rumbles, 9 p.m.-12:30 a.m. Fri.; Reflections Big Band, 8:30 p.m.-midnight Sat.; Ernie Kucera, 2-5:30 p.m. next Sun.; Whiskey River Band, Shady Grove, 8 p.m.-midnight next Sun.; 6600 W. O St.

**Roca Tavern, Sweet Potato Band**, today; Starfire, next Sun.; Roca.

**Royal Grove, Zwart**, Mon.: Billy Jack and the Attack, 9 p.m.-12:45 a.m. Tue.-Sat.; Amos Chang, comedy, 9:30-11:30 p.m. Thu.; 340 W. Cornhusker Highway.

**The Sidetrack, Joyce Durand, Paul Newton**, Fri.-Sat.; 935 O St.

**Sherry's Dining, Dancing and Romancing**, Jimmy Mack show, Tue.-Sat.; 200 N. 70th St.

**Speakeasy Lounge, Brandy**, Tue.-Sat.; 3233½ S. 13th St.

**Stan's, Fast Movin' Train**, tonight; Midnight Angels, Fri.-next Sun.; 6500 N. 84th St.

**Star City Eagles, John Dolen**, 6:30-10:30 tonight; jam session, 8:30-11:30 p.m. Wed.; Ray Williams, 8:30 p.m.-12:30 a.m. Fri.-Sat.; Sweet Country Band, 6:30-10:30 p.m. next Sun.; 2050 Cornhusker Highway.

**Starlite Ballroom, Czechlanders**, 2-6 p.m. today; Legacy, 8-11 p.m. Fri.; Lonny Lynn, 8 p.m.-midnight Sat.; Barry Boyce, 2-6 p.m. next Sun.; 3½ miles west of Wahoo.

**Sweep Left Lounge, Rockin' Fossils**, Tue., Thu.-Sat.; 815 O St.

**Tack Room, jam session**, 8-11 p.m. Thu.; County Line, Fri.-Sat.; 1445 Cornhusker Highway.

**Turnpike, live country music**, 8:30 p.m.-12:30 a.m. tonight, next Sun.; 14th Street and Saltillo Road.

**Zoo Bar, Jumpin' Kate and the Rollover Sisters**, Mon.: The Tablerockers, Tue.; The Forbidden Pigs, Wed.-Sat.; 136 N. 14th St.

**Gallery Walk, 1-5 p.m. today**, at Burkholder Project, Gallery of the Department of Art and Art History-UNL, UNL Great Plains Art Collection, Haydon Gallery, Haymarket Art Gallery, Elder Gallery, University Place Art Center.

**Talks 'n Tortes lecture series, "Willa Cather and Women's Art,"** Evelyn Haller, 2 p.m. today; "The Platte River as a Theme for 19th Century Artists," Gary Zaruba, 2 p.m. next Sun., University Place Art Center, 2601 N. 48th St.

**Nature hike**, 2 p.m. today, Chet Ager Nature Center, Pioneers Park.

**Japan lecture series**, ends with oriental dinner □, 6 tonight, Vine Congregational Church, 1800 Twin Ridge Road.

**Book, author talk, "Patriot 76,"** Donald Ray-Swartz, noon Mon., Gathering Place, 1448 E St.

**Lectures on church music**, Michael Bauer, 2, 3:30, 8 p.m. Mon., 9, 10:30 a.m. Tue., Wick Alumni Center, 1520 R St.

**Sandhill Crane guided trip**, leaves 11 a.m. Wed., meet at F Street Recreation Center, 1225 F St. □

**Brown Bag Lecture, "Blood on the Plains: Murder Most Foul in Lincoln, Nebraska,"** Clare "Bud" McKanna Jr., noon Thu., Museum of Nebraska History, 15th and P streets.

**Program, "Collecting an American Postcard Publisher: The Detroit Publishing Co.,"** 7:30 p.m. Thu., Northeast Holiday Inn, 5250 Cornhusker Highway.

**Reading, Frederick C. Luebke**, Ames Series, 7:30 p.m. Thu., Heritage Room, Bennett Martin Public Library, 136 S. 14th St.

**Video, "ESP, Clairvoyance and Remote Perception,"** Russell Targ, noon Fri., The Gathering Place, 1448 E St.

**Constellation Walk**, 7:30 p.m. Fri., Chet Ager Nature Center, Pioneers Park. □

**Rodeo**, 7:30 p.m. Fri.-Sat., 2 p.m. next Sun., Pershing Municipal Auditorium, 226 Centennial Mall South. □

**Lincoln Gem and Mineral Club Show**, 9 a.m.-8 p.m. Sat., 10 a.m.-5 p.m. next Sun., Pershing Municipal Auditorium, 226 Centennial Mall South. □

**Doll Quilt Show**, 11 a.m.-2 p.m., 3-4 p.m., Sat.; program, Mary Gormley, 2 p.m. Sat., Heritage Presbyterian Church, 880 S. 35th St.

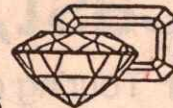
**Chemistry demonstrations**, 11 a.m., 3 p.m. Sat., Lincoln Children's Museum, 121 S. 13th St.

**Workshop, "Project Wild and Aquatic Wild,"** 2 p.m. Sat., Pioneers Prairie Interpretive Center, Pioneers Park.

Wednesday, March 18, 1992

## Lincoln Gem and Mineral Club, Inc.

P.O. Box 5342 Lincoln, Nebraska 68505



Invites you to attend its  
Big 34th Annual

## Gem & Mineral Show

March 21 & 22, 1992

Dealers — Programs — Rough — Agate — Jade — Fossils — Minerals — Displays — Jewelry Maker's Supplies — and More



**SHOW HOURS:**  
Sat., March 21 9:00-8:00  
Sun., March 22 10:00-5:00

**ADMISSION**  
Adults, \$2.00  
Children under 8,  
free with adult

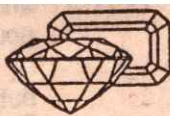


Pershing Auditorium

This ad good for 50¢ off each adult admission.  
226 Centennial Mall South

# Lincoln Gem and Mineral Club, Inc.

P.O. Box 5342 Lincoln, Nebraska 68505



Invites you to attend its  
Big 34th Annual

## Gem & Mineral Show

March 21 & 22, 1992

Dealers — Programs — Rough — Agate — Jade — Fossils —  
Minerals — Displays — Jewelry Maker's Supplies — and More



**SHOW HOURS:**  
Sat., March 21 9:00-8:00  
Sun., March 22 10:00-5:00

**ADMISSION**  
Adults, \$2.00  
Children under 8,  
free with adult



**Pershing Auditorium**

This ad good for 50¢ off each adult admission.  
**226 Centennial Mall South**

## WEEKEND WATCH

Best Bets For Your Leisure Time

### Round ball marathon

Catch 16 hours of NCAA basketball tournament play on CBS this weekend, beginning at 11 a.m. both Saturday and Sunday.

### Spring Fling

Bethany's specialty shops feature their Spring Fling Friday and Saturday, 10 a.m. to 5 p.m., in the North Cotner Boulevard and Holdrege Street area.

### Ride 'em cowboy

The World's Toughest Rodeo is at Pershing Auditorium, 226 Centennial Mall South, with performances 7:30 p.m. Friday and Saturday, and 2 p.m. Sunday.



### Jazz and jigs

The Lincoln Public Schools Senior High Jazz Festival is 8 a.m. to 4:30 p.m. Saturday at Northeast High School, 2635 N. 63rd St., with a 7 p.m. concert at the Lied Center for Performing Arts, 12th and R streets (free). St. Francis Chapel, 1145 South St., hosts "A Song for Ireland" 8 p.m. Saturday and 3 p.m. Sunday (admission).

### Kid tunes

The Lincoln Symphony Orchestra and the Symphony Guild present a Lolly Pop Concert 10 a.m. Saturday at Dawes Junior High, 5130 Colfax Ave., while the Bedient Organ Co. and the Lincoln Chapter of the American Guild of Organists hold a "Children's Pipe Organ Experience" at 9 a.m. Saturday, 4221 N.W. 37th St. Free.

### Bing

NETV offers an easygoing evening Saturday with "Magic of Bing Crosby" at 8 p.m. and the wonderful movie "High Society" at 9:10 p.m.

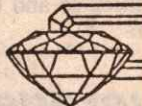
### Rocks, RVs and relics

The Lincoln Gem and Mineral Show is at Pershing Auditorium, 226 Centennial Mall South, 9 a.m. to 8 p.m. Saturday and 10 a.m. to 5 p.m. Sunday. Expo '92, at Bob Devaney Sports Center, will run 11 a.m. to 10 p.m. Friday, 9 a.m. to 10 p.m. Saturday and 11 a.m. to 8 p.m. Sunday. The Lancaster Antique Show and Sale, at State Fair Park Ag Building, is 9 a.m. to 6 p.m. Saturday and 10 a.m. to 5 p.m. Sunday.

Compiled by Mary Kay Roth

# Lincoln Gem and Mineral Club, Inc.

P.O. Box 5342 Lincoln, Nebraska 68505



Invites you to attend its  
Big 34th Annual

## Gem & Mineral Show

March 21 & 22, 1992

Dealers — Programs — Rough — Agate — Jade — Fossils —  
Minerals — Displays — Jewelry Maker's Supplies — and More



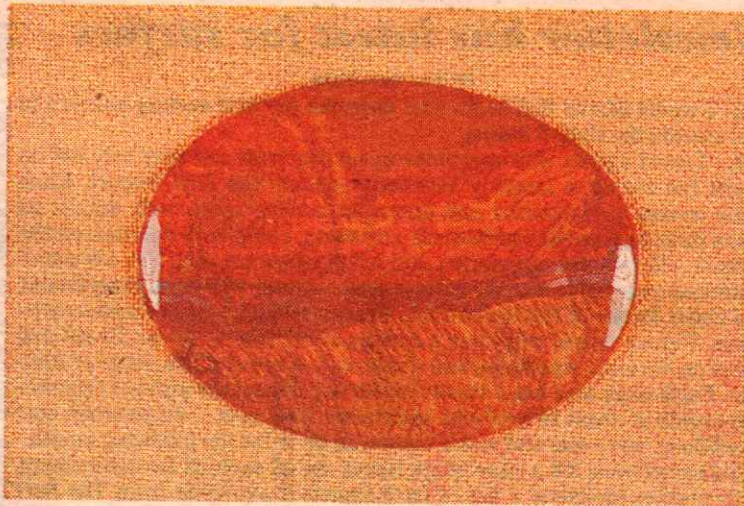
**SHOW HOURS:**  
Sat., March 21 9:00-8:00  
Sun., March 22 10:00-5:00

**ADMISSION**  
Adults, \$2.00  
Children under 8,  
free with adult



**Pershing Auditorium**

This ad good for 50¢ off each adult admission.  
**226 Centennial Mall South**



ROGER PABIAN

This **Scenic Tiger Iron** from Australia will be one of the displays at the Gem and Mineral Show next weekend.

## Asian nomadic tribal jewelry to be at gem, mineral show

Jewelry of the nomadic tribes of Asia will be one of the featured displays at Lincoln Gem and Mineral Club's 34th annual show Saturday and next Sunday at Pershing Municipal Auditorium, 226 Centennial Mall South.

That pastoralism was important to nomadic peoples is reflected in the stylized horses, ram's heads and horns that show up as standard motifs of their jewelry. The social positions of nomadic people were evident in the kinds of jewelry they were allowed to wear, and much jewelry served as dowry items. Although only the most powerful khans and their descendants were allowed to wear gold, silver, nickel silver, brass and copper were used by the common people. The stones used in the settings had no such restrictions, and glass, garnet, coral, turquoise and agate were commonly used.

There will be 14 retail dealers from eight states as well as many demonstrators showing sphere making, scrimshaw, gem faceting and cabochon cutting, gem carving, metal casting and jewelry-making techniques. Numerous displays by club members and show guests will also be on hand. Several illustrated lectures are planned.

Show hours are 9 a.m. to 8 p.m. Saturday and 10 a.m. to 5 p.m. next Sunday.

Admission is \$2 for adults, and children under 8 are free with adult guardians. School groups accompanied by their appropriate teachers will be admitted free.

Scout, Camp Fire and other youth groups in uniform are admitted free with adult leaders.