

# Lincoln Gem and Mineral Club, Inc.

P. O. Box 5342

Lincoln, Nebraska 68505



*Invites you to attend its*

**Big 33rd Annual**

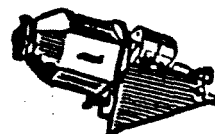
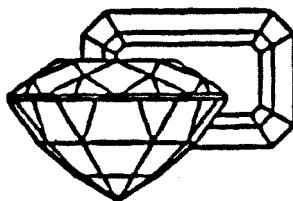
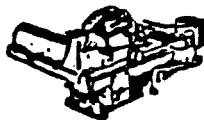
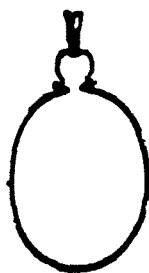
## Gem & Mineral Show

**MARCH 16, 17, 1991**

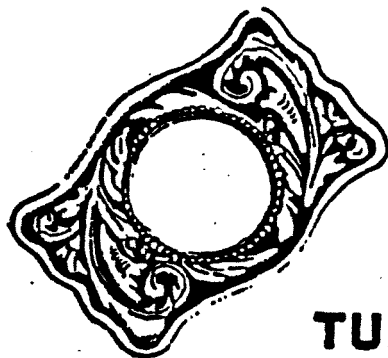


**Pershing Auditorium**

**226 CENTENNIAL MALL SOUTH**



**TUMBLERS-DEALERS-PROGRAMS-JASPER-ROUGH-  
AGATE-JADE-FOSSILS-MINERALS-SAWS-**



**TURQUOISE-DISPLAYS-FINDINGS  
JEWELRY MAKER'S SUPPLIES- and MORE**

**SHOW HOURS:**

Saturday, March 17, 9:00 - 8:00  
Sunday, March 18, 10:00 - 5:00

**ADMISSION:**

Adults.....\$2.00  
Children, under 8,  
free with adult.

# Lincoln Gem and Mineral Club, Inc.

P. O. Box 5342

Lincoln, Nebraska 68505

PROUDLY PRESENTS



Its

33rd ANNUAL



GEM AND MINERAL SHOW

AND THE

1991 NEBRASKA

STATE SHOW

March 16, 17, 1991



226 CENTENNIAL MALL SOUTH

SHOW HOURS

Saturday, March 16, ---9:00 A.M.-8:00 P.M.

Sunday, March 17, -----9:00 A.M.-5:00 P.M.

Welcome to one of the annual rites of spring. While some Nebraskans celebrate by observing the migrations of cranes, ducks, geese, and raptors, LGMC watches the annual pilgrimage of visitors to its gem show.

May you become enraptured with all you see. Don't be a silly goose and duck the many great buys encountered while craning your neck over all the treasures. Included is a shopping list in case you forgot yours:

AMETHYST, AGATE, AMBER, BERYL, BEAD, BOOK, CAB, CZ, CITRINE, CATSEYE, CARNELIAN, CRINOID, DIOPSIDE, DIAMOND, DEMANTOID, EMERALD, EQUIPMENT, ELBAITE, FLUORITE, FOSSIL, FAIRBURN, GOLD, GEM, GARNET, GRINDER, HELIODOR, HEMATITE, HESSONITE, IOLITE, IRIS, INTAGLIO, JEWELRY, JASPER, JADE, KUNSITE, KYANITE, LABRADORITE, LAKER, LAPIS, MINERALS, MORGANITE, MALACHITE, NUTSUKE, NECKLACE, NEPHRITE, OPAL, ONYX, OBSIDIAN, PERIDOT, PEARL, PYRITE, QUARTZ, ROUGH, RUBY, RING, SILVER, SUPPLIES, SAGENITE, SAPPHIRE, TURQUOISE, TOPAZ, TRILOBITE, TIGEREYE, TANZANITE, TOURMALINE, TOOL, ULEXITE, UVAROVITE, VANADENITE, VARISCITE, WULFENITE, WAVELLITE, XANTHITE, YOUNGITE, YAG, ZEOLITE, ZIRCON, & ZOISITE.

Enjoy!

Fred B. Holbert, President

#### CHAIRMAN'S WELCOME

As chairman for Lincoln Gem & Mineral Club's 33rd Annual Show. I wish to thank you for coming to view some of the most interesting things in the World of Mother Nature. Nature has provided many types of materials for us to find and enjoy, from the fossils and plant life to the many types of stone, examples of which may be seen here at the show.

You shall see from the rough items, as they are found, to the finished jewelry that can be made. You will be able to see many interesting demonstrations of the different areas of our hobby. We invite you to join us. Information may be found at our club booth.

Thanks again! Enjoy yourselves!

John Harrison, Chairman

### RETAIL DEALERS

Custon Gems, Inc., Omaha, NE  
Davis Trading Co., Topeka, KS  
The Gem Shop, Inc., Cedarburg, WI  
Honeycutt Gems & Jewelry, Fairfield, IA  
J J & L Rocks & Minerals, Hickman, NE  
Johnson Agate Co., Mankato, MN  
Lentz Lapidary, Inc., Mulvane, KS  
L & R Lapidary & Jewelry, Janesville, MN  
Rusty's Rock Shop, Decatur, IL  
Schoolers Minerals & Fossils, Blue Springs, MO  
Simon's Lapidary, Lincoln, NE  
West Side Agate, Ames, IA  
Wisconsin Gems & Custom Jewelry, Owen, WI

### RETAIL DEMONSTRATORS

Mary McCartney & Sunny Miller, Grand Island,  
NE metal casting.  
Ed Junker, Wood River, NE, sphere making.

### DEMONSTRATORS

Henry Hohnholt, Kearney, NE, stained glass  
with rock.  
Connie McCartney, Grand Island, NE,  
scrimshaw.

PLEASE---NO SMOKING EXCEPT IN DESIGNATED  
AREAS

PLEASE---NO FOOD, DRINK, OR SMOKING IN  
DEALER AND DISPLAY AREAS.

THANK YOU FOR YOUR COOPERATION.

AND---PLEASE---COME SEE US AGAIN, NEXT  
YEAR AT PERSHING, MARCH 14, 15, 1992.

OTHER 1992 LG&MC EVENTS INCLUDE  
THE MID-WINTER SWAP, JANUARY 25,  
NEBRASKA CENTER, 33RD & HOLDREGE,  
AND GEOLOGY DAY AT PIONEERS PRAIRIE  
INTERPRETIVE CENTER, PIONEERS PARK,  
FEBRUARY 16. PLEASE VISIT US.

## ILLUSTRATED PROGRAMS

We have attempted to bring you a full array of interesting and educational programs to help fulfill your visit to our show. Their schedule is as follows:

### Saturday

- 10:30 Advanced Lapidary, Bill White,  
Independence, MO  
1:30 Agates, Andrejs Zarins, Lincoln, NE  
3:30 Wulfenites of Arizona, Ed Pederson,  
Lincoln, NE  
5:30 Stories Bones Tell, Charles and Karen  
Messenger, UN-L State Museum, Lincoln,  
NE

### Sunday

- 1:30 Mineral Collecting in Arkansas, Ed  
Pederson  
2:30 Ash Fall Beds - New State Park, Dr.  
Michael Voorhies, UN-L State Museum,  
Lincoln, NE  
3:30 Nebraska's Gemstones, Roger K.  
Pabian, Conservation & Survey Division,  
IANR, UN-L, Lincoln, NE

## YOUR SHOW COMMITTEE

Chariman.....John Harrison  
Asst. Chair, Secretary.....Phyllis Parks  
Floor.....Francis Belohlave  
Asst. Floor.....Jerry Moore  
Dealers.....Fred Holbert  
Publicity/Promotions.....Roger Pabian  
Working Shop.....David Heffelbower  
Security & Ticket Sales.....Vera Lyman  
Ribbons & Recognitions.....Sandra McNiff  
Special Displays.....Jim Parks  
Junior Activities.....Jan Wright  
Rock Races.....Ed Ridge  
Programs & Lectures.....Kevin Schwartman  
Saturday Buffet.....Shirley & Bill Rockel  
Special Activities.....Charles Wooldridge  
Fossil Dig.....Don Phillips  
Gem Dig.....UN-L Geology Club  
Nebraska Material Competition....Mike Smith  
Display Space.....James Null  
Announcements/Coordination....  
1992 Show Chairman.....Phyllis Parks

### SPECIAL DISPLAYS

Fluorescent Room.....Harry Bradford  
Lawrence, KS  
Paintings in Silve.....Shirley Johnson  
Lincoln, NE  
Petrified Wood.....Norman Balliet  
Central City, NE  
Lapidary Creations.....Bill & Betty White  
Independence, MO  
Variscite.....Bruce Simon  
Lincoln, NE  
Idaho Star Garnets.....Lloyd E. Pretzer  
Beatrice, NE  
Field trip material...given to LG&MC by the  
Bushnell's of Australia  
Blue Agate, Nebraska State Gem..Tom Simmons  
Lincoln, NE  
Spectacular Fairburn Agates.....Tom Simmons  
Lincoln, NE  
Nebraska Artifacts.....Clyde Wallace  
Lexington, NE  
and many splendid displays from our  
dealers and members.

### NEBRASKA ASSOCIATION EARTH SCIENCE CLUBS SUNDAY

9:30 A.M. Board of Directors Meeting

1:30 P.M. Delegates Meeting.

Both meetings will be held in the  
program room in Pershing Auditorium.







**Lincoln Gem and Mineral Club, Inc.**


*takes great pleasure in presenting to*

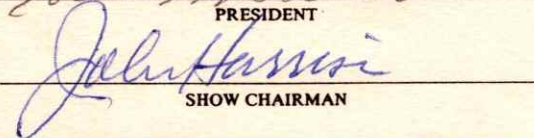


*This Award of Appreciation  
for participation in the*

**33rd ANNUAL GEM AND MINERAL SHOW  
AND NEBRASKA STATE SHOW**

**MARCH 16 and 17, 1991**

  
\_\_\_\_\_  
PRESIDENT

  
\_\_\_\_\_  
SHOW CHAIRMAN



Monday A.M. 3-18-91

Phyllis - on deposit slip

Currency = \$ 200.00 = 50's  
1,060.00 = 20's  
270.00 = 10's  
505.00 = 5's  
171.00 = 1's

\$ 2,206.00

\$ 2,206.00 Currency  
17.00 Coins

(G.M. Hogg) 3.00 Check  
(Cotner Motorworks) 4.00 Check

\$ 2,230.00 Total deposit  
3-18-91

Returned \$500.00 Change Sat. 3-16-91

Turned in \$1,956.00 Sun. A.M. 3-17-91

Turned in \$2,230.00 Mon. A.M. 3-18-91 (See above)

1991 Show = March 16-17 (State Show)

Total Show attendance = 2,253.

Total Gate receipts = \$4,186.00

Sat = 1045  
366  
Sun = 572  
270  
1,411  
842  
2,253

Sat. \$ 2,637.00

Sun. \$ 1,549.00

Total = \$ 4,186.00



Saturday      March 16, 1991

\* 2.00 Tkts = Orange  
\$ 1.50 Tkts = Bright Green  
(w/coupon)

Tkt # 611047  
      610002  
      1045

\$ 2.00 Tickets = \$ 2,090.00

Tkt # 545514  
      545148  
      366

\$ 1.50 Tickets = \$ 549.00

(discount coupons = 366)

Total paid attendance = 1,411 (Sat)      Total = \$ 2,639.00

Refund = \$ 2.00 to Shirley Rockel's mother      - 2.00  
because she said she had display

Total = \$ 2,637.00

Groups: (Ratio = 6 children to 1 adult)      Leader = free  
7 Girl Scouts      # 362      Leader - Marilyn Jepson

1 NCC Y      Leader - Steve Rider

8 Tiger Cubs      # 64      Leader - Brenda Knipplemeyer  
w/ 6 paid adults

8 Scouts      # 20      Leader - Stuart Pauley  
w/ 1 free adult

15 Pyrtle Elem. School      Leaders - Ryan Ross  
Bonnie Rosenberger



Sunday

March 17, 1991

2.00 Tkts = Pale Green  
# 1.50 Tkts = Bright Red  
(w/coupon)

Tkt # 030574  
030002  
572

# 2.00 Tickets = \$ 1,144.00

Tkt # 151102  
150832  
270

# 1.50 Tickets = \$ 405.00

(discount coupons = 270)

Total paid attendance = 842 (Sun)

Total = \$ 1,549.00

Groups: (Ratio = 6 children to 1 adult) Leader = free

3 Cub Scouts #290 Leader - John Rivera  
w/ 2 paid adults

10 Morley Elem. School Leader - Dr. Sanford S. Kaplan  
w/ 1 free adult  
w/ 5 paid adults



Saturday -

Start # 610002 # 2.00 ticket

End # ~~545~~

~~611047~~

611047

# 1.50 discount

Start # 545148 w/coupon ticket

End # 5455<sup>14</sup>~~4~~



Hand Stamp to come back to Show on Sat

Children = 8yrs and older =  
reg price

Under 8 = free w/an adult

MAR 16

LINCOLN GEM AND MINERAL CLUB, INC.

presents

Our 33rd Annual Gem and Mineral Show

March 16 and 17, 1991

Pershing Municipal Auditorium  
Lincoln, Nebraska

Admission \$2.00  
8 and under Free w/adult

Hours:  
Saturday 9 to 8  
Sunday 9 to 5

This card good for 50 cents off each paid admission.  
for all people in group.

Please write  
number of  
discount tick  
used for ea  
yellow card

Sunday -

Start # 030002

End # 030578<sup>4</sup>

# 2.00 ticket



Start # 150832

# 1.50 discount  
w/coupon  
ticket

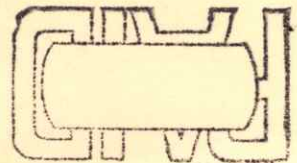
End # 151107<sup>2</sup>



Children = 8 yrs and older = reg. admission price

Children Under 8 = free w/an adult.

Hand stamp to come back to Show on Su



LINCOLN GEM AND MINERAL CLUB, INC.

presents

Our 33rd Annual Gem and Mineral Show

March 16 and 17, 1991

Pershing Municipal Auditorium  
Lincoln, Nebraska

Admission \$2.00  
8 and under Free  
8 w/adult

Hours:  
Saturday 9 to 8  
Sunday 9 to 5

This card good for 50 cents off each paid admission.  
for all people in group.

Please write  
number on  
ea. discount  
card of disc  
tickets.



3-11-91

# MONDAY

## News You Can Use In The Week Ahead

**Park** — A proposed master plan for Woods Park that would add tennis courts and trees but eliminate the rose garden will be presented today from 6:30 to 8:30 p.m. at Elliott School, 25th and N streets.

**Women** — Appearances by soap opera stars Eric Braeden ("The Young and the Restless") and Mark Derwin ("The Guiding Light") will highlight the 10/11 Lincoln Women's Show Friday through Sunday at the Bob Devaney Sports Center. The show will feature more than 150 booths and special demonstrations. Hours are 11 a.m. to 9 p.m. Friday, 10 a.m. to 7 p.m. Saturday and noon to 6 p.m. Sunday.

**Pancakes** — A long-time favorite with local pancake lovers, the Sertoma Pancake Jamboree will be Thursday at Pershing Auditorium, 226 Centennial Mall South. The 30th annual jamboree will feature pancakes, sausages and beverages from 7 a.m. to 7:30 p.m.

**Leisure** — More than 100 exhibits of outdoor furnishings and lawn and garden equipment will fill State Fair Park's Agricultural Hall Friday through Sunday during the 14th annual Home, Garden and Leisure Living Show.

Show hours are 6 to 9 p.m. Friday, noon to 9 p.m. Saturday and noon to 5 p.m. Sunday.

**St. Patrick** — In honor of St. Patrick's Day Sunday, a charming Irishman recalled his mother's favorite description of an ignorant person: "If you gave that fella a whole wit, he'd still be a half-wit."

**Gems** — Gems, minerals and fossils, as well as finished jewelry, will be on display at the 33rd annual Lincoln Gem and Mineral Club Show Saturday and Sunday at Pershing Auditorium, 226 Centennial Mall South. Hours will be 9 a.m. to 8 p.m. Saturday and 9 a.m. to 5 p.m. Sunday.

**Old 710** — Old 710, the 90-year-old steam locomotive, is scheduled to return to Lincoln Thursday or Friday. Plans are to display the restored locomotive and tender on the tracks at Lincoln Station.

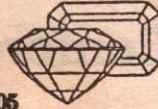
**Super-State** — The Lincoln Journal-Star Super-State basketball teams will be announced Sunday. The top 15 boys and girls will be honored as Super-Staters, and all-state teams will be named in each of the six classes.

— Compiled by Lucy Olson



## Lincoln Gem and Mineral Club, Inc.

P.O. Box 5342 Lincoln, Nebraska 68505



Invites you to attend its  
Big 33rd Annual

## Gem & Mineral Show

March 16 & 17, 1991

Dealers — Programs — Rough — Agate — Jade — Fossils —  
Minerals — Displays — Jewelry Maker's Supplies — and More



**SHOW HOURS:**  
Sat., March 16 9:00-8:00  
Sun. March 17 9:00-5:00

**ADMISSION**  
Adults, \$2.00  
Children under 8,  
free with adult



Pershing Auditorium

226 Centennial Mall South

Sun 3-10-91





ROGER PABIAN

This **Moctezuma agate** from Chihuahua, Mexico, will be among the displays at the gem and mineral show.

## Student's seismograph at gem and mineral show

Should a strong earthquake strike someplace in the world Saturday or next Sunday, visitors to Lincoln Gem and Mineral Club's 33rd annual show at Pershing Municipal Auditorium, 226 Centennial Mall South, could well

be the first people in Lincoln to learn about it via Adam Whyrick's science fair project, a seismograph.

Among the items featured at this year's show will be Whyrick's creation. See GEMS on page 11H

Lincoln Gem and Mineral Club Show, 9 a.m.-8 p.m. Sat., 9 a.m.-5 p.m. next Sun., Pershing Municipal Auditorium, 226 Centennial Mall South. □

*An Calendar page in TV section*

From page 1H

## Gems

tion, which won first place at the Randolph School Science Fair this school year and captured third-place honors at the regional science fair.

Though the seismograph hasn't recorded a major crustal event yet, Whyrick says that it is easy to tell when a bus or semitruck passes near his monitoring station.

Jan Wright, junior club coordinator, says the juniors' projects become more sophisticated every year.



Adam Whyrick

Whyrick is the son of Mr. and Mrs. Ed Whyrick. Other junior club members will operate the juniors' booth where youngsters will be able to obtain free samples of rocks, minerals and fossils, as well as educational materials.

This year's show also will feature a large black-light display by Kay and Harry Bradford of Lawrence, Kan. Visitors can prospect for gemstones in a booth operated by the University of Nebraska-Lincoln Geology Club. There will be a free fossil dig at the show and patrons will have a chance to find the remains of 300-million-year-old fossils of plants and animals that once lived in Nebraska but are now extinct.

There will be 14 dealers as well as several working demonstrators, plus free illustrated lectures on gemology, geology, paleontology and other aspects of the rock hobby.

Hours are 9 a.m. to 8 p.m. Saturday and 9 a.m. to 5 p.m. next Sunday. Admission is \$2 for adults; children under 8 are free with parents. Camp Fire, Scout and school class groups are free with adult leaders.

*Focus - Sun - 3-10-91*



# WEEKEND WATCH

## Best Bets For Your Leisure Time

### Heat up your waffle iron

Tap your own trees and go "maple syruping" at 9 a.m. Saturday in Wilderness Park, First and Van Dorn streets. Call 471-7895 for information.

### Something old

Sample the Lancaster Antique Show and Sale at the State Fairgrounds Exposition Building, from 9 a.m. to 6 p.m. Saturday and 10 a.m. to 5 p.m. Sunday.

### Have a green beer

Celebrate St. Patrick's Day on the Wee Bit O'Green Hike, starting at 2 p.m. Sunday, at Chet Ager Nature Center in Pioneers Park. Or start celebrating Friday from 5 to 10 p.m. with St. Elizabeth Auxiliary's St. Patrick's Day dance at Lincoln Station's Great Hall. On Saturday, Havelock will hold a parade at 10 a.m., and St. Patrick's Church hosts a dinner from 11 a.m. to 5 p.m. at the Goodyear Rec Center, 63rd Street and Logan Avenue. Children's games will be held at the church, 6120 Morrill Ave., from 11 a.m. to 5 p.m., and a church dance is planned from 8 p.m. to midnight.



### Pick your music

Mozart's masterpiece, "Don Giovanni," comes to the Lied Center for Performing Arts, 301 N. 12th St., at 8 p.m. Friday and Saturday. Elsewhere, the Baldknobbers will star in a Hillbilly Jamboree Show at Pershing Auditorium, at 7:30 p.m. Saturday.

### Female fanfare

The 10/11 Lincoln Women's Show will be at the Bob Devaney Sports Center from 11 a.m. to 9 p.m. Friday, 10 a.m. to 7 p.m. Saturday and noon to 6 p.m. Sunday.

### Diamonds are a girl's best friend

Catch the Lincoln Gem and Mineral Club's gems, minerals and fossils on display at Pershing Auditorium, 226 Centennial Mall South, from 9 a.m. to 8 p.m. Saturday and 9 a.m. to 5 p.m. Sunday.

### Movie picks

Two interesting movies arrive at The Lincoln this weekend: "Class Action" with Gene Hackman and "Guilty by Suspicion" with Robert DeNiro.

Compiled by Mary Kay Roth

Fri - 3-15-91

Lincoln Star

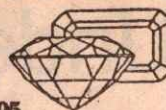


*The Lincoln Journal-Star*  
*Thurs. Fri Sat.*  
*3-14 3-15 3-16*



## Lincoln Gem and Mineral Club, Inc.

P.O. Box 5342 Lincoln, Nebraska 68505



*Invites you to attend its*  
**Big 33rd Annual**

## Gem & Mineral Show

**March 16 & 17, 1991**

Dealers — Programs — Rough — Agate — Jade — Fossils —  
Minerals — Displays — Jewelry Maker's Supplies — and More



### SHOW HOURS:

Sat., March 16 9:00-8:00  
Sun. March 17 9:00-5:00

### ADMISSION

Adults, \$2.00  
Children under 8,  
free with adult



**Pershing Auditorium**

**226 Centennial Mall South**

### ■ activities

*Then*  
*JH*  
*B*  
**Planetarium Shows, "Light Years From Andromeda," ends 2 p.m. today, "The New Solar System," 2 p.m. Sat., next Sun.; Laser Fantasies, "Beatles: Sgt. Pepper's" 8, 9:30, 11 p.m. Fri.-Sat.; Laser Visions, "Mannheim Steamroller: Fresh Aire Seven," 3:30 p.m. today, "Starflight II," 3:30 p.m. next Sun., Mueller Planetarium, University of Nebraska State Museum, 14th and U streets. □**

**Hyde Memorial Observatory, "Our Nearest Neighbor, the Moon," "Winter Constellations," 7-10 p.m. Sat., Holmes Park.**

**Lincoln Gem and Mineral Club Show, 9 a.m.-5 p.m. today, Pershing Municipal Auditorium, 226 Centennial Mall South. □**

*Calendar page*

*FOCUS 3-17-91*

*weekend*

*up)*

*newspaper*

Daily  
**Nebraskan**  
Friday, March 15, 1991



**Lincoln Gem and Mineral Club**

*Invites you to attend its*

Big 33rd Annual

**Gem & Mineral Show**

March 16, 17, 1991 at



*Pershing Auditorium*

226 CENTENNIAL MALL SOUTH

**ADMISSION:**

Adults . . . . \$2.00

Children, under 8,  
free with adult

**SHOW HOURS:**

Saturday, March 16, 9:00 - 8:00  
Sunday, March 17, 9:00 - 5:00

TUMBLERS-DEALERS-PROGRAMS-JASPER-ROUGH-  
AGATE-JADE-FOSSILS-MINERALS-SAWS-

TURQUOISE-DISPLAYS-FINDINGS  
JEWELRY MAKER'S SUPPLIES-AND MORE!