

Lincoln Gem and Mineral Club, Inc.

P. O. Box 5342

Lincoln, Nebraska 68505

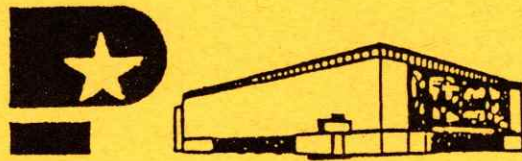


Invites you to attend its

Big 32nd Annual

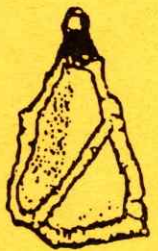
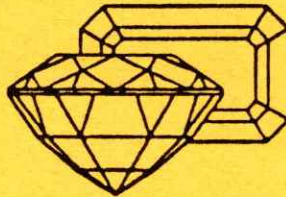
Gem & Mineral Show

MARCH 17, 18, 1990

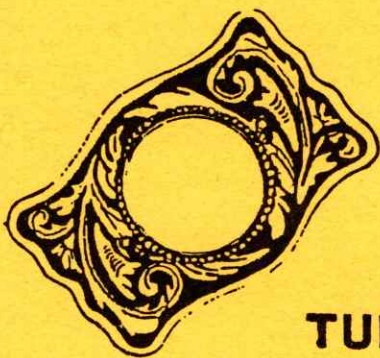


Pershing Auditorium

226 CENTENNIAL MALL SOUTH



**TUMBLERS-DEALERS-PROGRAMS-JASPER-ROUGH-
AGATE-JADE-FOSSILS-MINERALS-SAWS-**



**TURQUOISE-DISPLAYS-FINDINGS
JEWELRY MAKER'S SUPPLIES- and MORE**

SHOW HOURS:

Saturday, March 17, 9:00 - 8:00
Sunday, March 18, 9:00 - 5:00

ADMISSION:

Adults.....\$2.00
Children, under 8,
free with adult.

Lincoln Gem and Mineral Club, Inc.

P. O. Box 5342

Lincoln, Nebraska 68505

PROUDLY PRESENTS



Its



32ND ANNUAL

GEM & MINERAL SHOW

AND THE

1990 NEBRASKA
STATE SHOW

MARCH 17, 18, 1990



226 CENTENNIAL MALL SOUTH

SHOW HOURS

Saturday, March 17, ---9:00 A.M.-8:00 P.M.
Sunday, March 18, -----9:00A.M.-5:00P.M.

PRESIDENT'S WELCOME

As President of the Lincoln Gem & Mineral Club, I welcome you to our annual gem show. We are very proud of our tradition of fine shows. If you are an "old hand" at gem shows, I am sure that you will find much to interest you within these environs. If this is all new to you, may I offer the following suggestions:

1. Go slowly and observe. Ask questions.
2. Visit our dealers. Ask questions.
3. Peruse the exhibits. Ask questions.
4. See the demonstrators. Ask questions.
5. Attend a program. Ask questions.

Looks like the common theme is that if you have a question about something, ask someone. Ask a dealer or anyone that is wearing a tag, ribbon, or "looks official"; the table at the entrance might be a good place to start. If you have interest in finding out more about our hobby, please enquire there also. Have fun!

Fred B. Holbert

SHOW CHAIRMAN'S WELCOME

It is my pleasure to welcome you to our club's 32nd annual show and the 1990 Nebraska State Show. I hope that you will find both educational and entertainment value in the many displays and demonstrations. If you find that you would like to become more involved in gems and minerals, please feel free to contact anyone at our club booth near the entrance to the show for more details about Lincoln Gem and Mineral Club.

Thank you for coming to the show.

Roger K. Pabian

SPECIAL DISPLAYS

"Trilobite Graveyard"	University of
Nebraska State Museum,	Lincoln
Green River Fossils	Scott Wolter,
Minneapolis, Minnesota	
Lapidary Creations	Bill White,
Independence, Missouri	
Nomad Jewelry	Linda Plock,
Lincoln, Nebraska	

HAND'S ON

"Fossil dig"---find your own Pennsylvanian and Permian age invertebrate fossils that once lived in Nebraska. Don Phillips supervising Free

"Gem prospecting"---find your own spinel, sapphire, amethyst, and other rough gems from the gravel pile. UN-L Geology Club Charge 50 cents

ROCK RACES

Third edition of the "Petrolympics" by gravity-powered, pollution free lithic speedsters. Some high-powered racing rocks will be available from dealers or from the junior booth..... John Abel, Commissioner

DEMONSTRATORS

Henry Hohnholt, Kearney, Nebraska
Agate and Glass Windows
Mary McCartney, Sonny Miller, Grand
Island, Nebraska Metal Casting
Connie McCartney, Grand Island, Nebraska
Scrimshaw
Ed Junker, Wood River, Nebraska
Sphere Making
Roger Pabian, Lincoln, Nebraska,
Bill White, Independence, Missouri
Lapidary Novelties
David Heffelbower, Lincoln, Nebraska
Cabochon Making
Craig Tenhulzen, Lincoln, Nebraska
Francis Belohlavy, Lincoln, Nebraska
Gemstone Faceting
Fred Holbert, Lincoln, Nebraska,
Fire Agate Carving

PROGRAMS

We have attempted to bring you a full array of interesting and educational programs to help fulfill your visit to our show. Their schedule is as follows:

SATURDAY

- 10:30 A.M. Sapphire mining in Montana.
Charles & Karen Messenger, Hickman, NE
1:30 P.M. North American Agates
Andrejs Zarins, Lincoln, NE
3:30 P.M. Moctezuma Agates
Roger Pabian, Lincoln, NE
5:30 P.M. Field Trip Planning
Francis Belohlavy, Lincoln, NE

SUNDAY

- 10:30 A.M. Green River Fossils
Scott Wolter, Minneapolis, MN
2:30 P.M. Cabochon Making
Bill White, Independence, MO
3:30 P.M. Mining by Mail
Ed Schafer, Ralston, NE

NEBRASKA ASSOCIATION EARTH SCIENCE CLUBS SUNDAY

- 9:30 A.M. Board of Directors Meeting
1:30 P.M. Delegates meeting.

Both meetings will be held in the program room in Pershing Auditorium.

YOUR SHOW COMMITTEE

Roger Pabian	Chairman
John Harrison	Floor
Sandra McNiff	Ribbons, Recognitions
Vera Lyman	Promotions
Gerald Moore	Displays
Billie Heffelbower	Ticket Sales
David Heffelbower	Working Shop
Shirley Rockel	Calling, Dinner
Fred Holbert	Dealers, Demonstrators
Don Phillips	Fossil Dig
Janet Wright	Junior Activities
Francis Belohlavy	Programs, Mailings
Phyllis Parks	Budget and Finance

DEALERS

We hope that you will find the wares of the dealers to your liking and find some item to fill each of your particular needs. Their location on the floor is shown on the floor plan.

The Simons,..... Lincoln, Nebraska
J J & L,..... Hickman, Nebraska
Custom Gems,..... Omaha, Nebraska
L & R Lapidary,..... Janesville, Minnesota
Wisconsin Gems, Owen, Wisconsin
Johnson Agate Co.,Mankato, Minnesota
Edward Fowler,Gouchalnd, Pennsylvania
Schooler's Minerals,Kansas City, MO
The Gem Shop, Cedarburg, Wisconsin
Andria Brie, El Cajon, California
West Side Agates, Ames, Iowa
Davis Trading Co., Topeka, Kansas
Honeycutt Gems & Jewelry, Fairfield, Iowa
Lentz Lapidary, Mulvane, Kansas

PLEASE---NO SMOKING EXCEPT IN DESIGNATED AREAS.

PLEASE---DO NOT TAKE FOOD OR DRINKS INTO DEALERS AREA.

THANK YOU FOR YOUR COOPERATION.

AND---PLEASE---COME SEE US AGAIN, NEXT YEAR AT PERSHING, MARCH 16, 17, 1991.

Layout of the 1990 Lincoln Gem & Mineral Club Show and Nebraska State Show

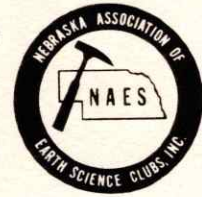
Working Shop Rock-Cutting	Connie McCartney Scrimshaw	Fossil Dig FREE	Henry Holnholt Stained-glass	Mary McCartney Steam-casting	Ed Junker Sphere Making
Dave Nixon UNL	The Simon's ----- Lentz Lapidary	Gem Dig	The Gem Shop ----- Davis Trading		
Craig Tenhulzen Faceting	Displays	Club Displays	Displays		
Fred Holbert Carving	Custom Gems Johnson Agate Co.	Special Displays	L & R Lapidary J. J. & L.	Francis Belohlavy Faceting	
Charles Woldridge Demo & Display	Displays Wisconsin Gems Schooler's Minerals	Juniors Display	Displays Edward Fowler Westside Agates		
Chris Rudnick Fossils	Honeycutt Gems & Jewelry		Andria Brie	Lincoln Gem & Mineral Club Info	Entrance

North <-----



Lincoln Gem and Mineral Club, Inc.

takes great pleasure in presenting to



This Award of Appreciation

for participation in the

**32nd ANNUAL GEM AND MINERAL SHOW
AND NEBRASKA STATE SHOW**

MARCH 17 and 18, 1990


PRESIDENT


SHOW CHAIRMAN



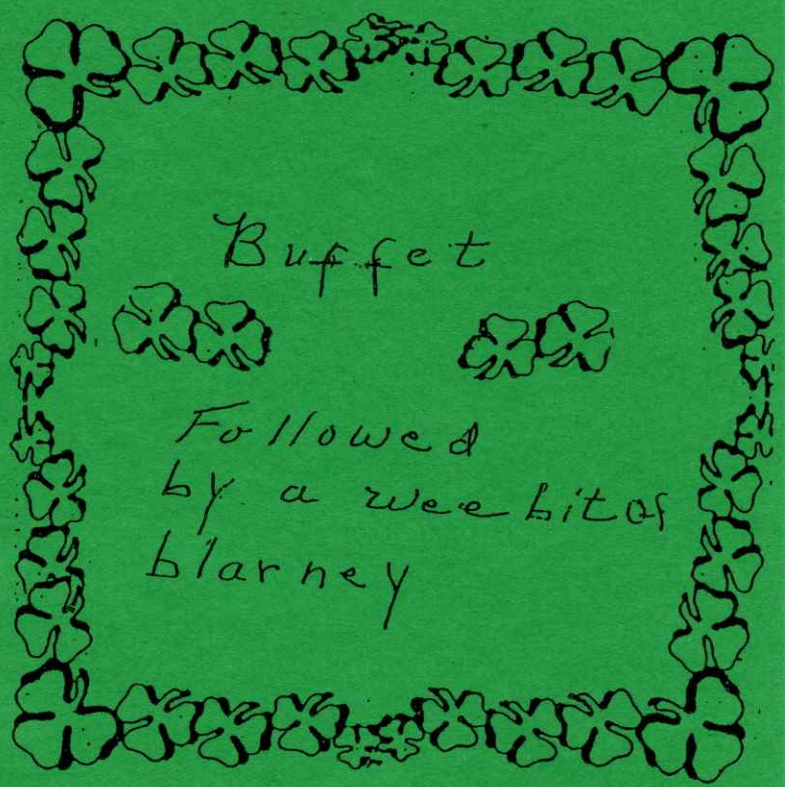
Tis
The State Show
St. Patlys Day
Dinner

3-17-90



Tis the luck of
the Irish
to have yourselves
and all with us





Buffet



Followed
by a wee bit of
blarney

LINCOLN GEM AND MINERAL CLUB, INC.

presents



Our 32nd Annual Gem and Mineral Show
and Nebraska State Show

March 17 and 18, 1990

Pershing Municipal Auditorium
Lincoln, Nebraska

Admission \$2.00
8 and under Free

Hours:
Saturday 9 to 8
Sunday 9 to 5

This card good for 50 cents off each paid admission.

Free

hole
ward
or spile
or tap-
Page 3

spending freeze alone — including no

Please turn to: Spending, Page 3

MONDAY

News You Can Use In The Week Ahead

Community — Members of the Community Congress, Lincoln's new comprehensive planning group, will hear citizen comments at two meetings today. City Council member Coleen Seng will host the meetings at 7:30 a.m. at the Bethany Pantry, 66th Street and Cotner Boulevard, and at 7:30 p.m. at the Northeast Senior Center, 6310 Platte Ave. Both meetings are open to any Lincoln resident.

Ninth St.

Food — Area Boy Scouts and Cub Scouts will launch their food drive for the Lincoln Food Bank this weekend, as part of a nationwide appeal. Scouts will distribute bags door to door Saturday and return next week to collect the filled bags. Note: The date listed on the bags is wrong. Bags should be placed outside the door March 24.

Gems — Displays of gems and minerals, informative programs and a chance to dig for fossils will highlight the Lincoln Gem and Mineral Club's annual show at Pershing Auditorium, 226 Centennial Mall South, Saturday and Sunday. Show hours are 9 a.m.-8 p.m. Saturday, and 9 a.m.-5 p.m. Sunday.

Leisure — More than 100 booths will offer products for homes, gardens and recreational activities at the 13th Annual Home, Garden and Leisure Living Show at the State Fair Park's Agriculture Hall Friday through Sunday. Also included this year, will be an arts and crafts corner offering works of area artists. Hours for the free show are 6-10 p.m. Friday, noon-10 p.m. Saturday, and noon-5 p.m. Sunday.

Irish — In honor of St. Patrick's Day on Saturday, here is an observation by George Bernard Shaw, one of Ireland's most quoted sons: "An Irishman's heart is nothing but his imagination."

Omaha — For a schedule of springtime happenings in the Omaha area, get the 1990 Spring Events calendar available free from the Greater Omaha Conventions and Visitors Bureau. To receive the calendar, write to the bureau, 1819 Farnam St., Suite 1200, Omaha, Neb. 68183. Or call toll-free 1-800-332-1819.

Candidates — Friday at 5 p.m. is the filing deadline for non-incumbent candidates for public offices and for delegates to the Republican and Democratic county conventions. Filing information is available at the Election Commissioner's Office, 555 S.

— Compiled by Lucy Olson

ands, reefs
res could be
of tires to
retreading
radials be-
re retreaded
een new and
s" — involves
bber, oil and
reused in a
ogy prohibi-
crash barri-
nt. But those
ply.
r energy re-
filling.
s and using
ring or other
les. The fab-
ut 5 million
1 Air Maga-
ap. Page 3

Free

WEEKEND WATCH

Best Bets For Your Leisure Time

Oops

Parents beware: The movie "Honey I Shrank the Kids" hits local video stores this weekend.

The countdown begins

The first round of the NCAA Basketball Tournament continues this weekend with 64 teams vying for the grand finale.

A Bit of the Blarney

Celebrate St. Patrick's Day Saturday with a shamrock shake from McDonald's and some corned beef and cabbage at home or a restaurant. Or look for green on the Wee Bit-O' Green Hike at 2 p.m. Saturday, at Chet Ager Nature Center in Pioneers Park.



Come dressed as a dinosaur

The University of Nebraska State Museum holds a children's festival Saturday from 10 a.m. to 4 p.m. with face painting, peanut races, treasure hunts and a costume contest for kids dressed as prehistoric critters.

Girl's best friend

Get a look at some shiny stones at the annual Gem and Mineral Show at Pershing Auditorium, 226 Centennial Mall South, 9 a.m. to 8 p.m. Saturday and 9 a.m. to 5 p.m. Sunday.

A little homey advice

The 13th annual Home, Garden and Leisure Living Show is this weekend at the State Fair Park's Agriculture Hall. Hours for the free show are 6-10 p.m. Friday, noon-10 p.m. Saturday, and noon-5 p.m. Sunday.

Spring is coming

A Spring Equinox celebration is set at Chet Ager Nature Center in Pioneers Park, 2-4 p.m. on Sunday.

Find a leprechaun

O'Neill and Wisner also celebrate the Irish holiday Saturday. O'Neill has contests, Irish stew and a grand parade at 1 p.m. Wisner features a 4-mile leprechaun run at noon, a 1:30 p.m. parade, as well as an evening dinner and dance.

Compiled by Mary Kay Roth

Paid (Fri.)



Lincoln Gem and Mineral Club, Inc.
Lincoln, Nebraska 68505
P.O. Box 6342



Invites you to attend its
Big 32nd Annual

Gem & Mineral Show

March 17 & 18, 1990

Dealers-Programs-Rough-Agate-Jade-Fossils-Minerals--
Displays-Jewelry Maker's Supplies-and More

Free Fossil Dig



SHOW HOURS:
Sat., March 17, 9:00-6:00
Sun., March 18, 9:00-5:00

ADMISSION
Adults, \$2.00
Children under 8, free with adult



Pershing Auditorium 226 Centennial Mall South

Paid
Saturday, March 17, 1990



Lincoln Gem and Mineral Club, Inc.
Lincoln, Nebraska 68505
P.O. Box 6342



Invites you to attend its
Big 32nd Annual

Gem & Mineral Show

March 17 & 18, 1990

Dealers-Programs-Rough-Agate-Jade-Fossils-Minerals--
Displays-Jewelry Maker's Supplies-and More

Free Fossil Dig



SHOW HOURS:
Sat., March 17, 9:00-6:00
Sun., March 18, 9:00-5:00

ADMISSION
Adults, \$2.00
Children under 8, free with adult



Pershing Auditorium 226 Centennial Mall South

Saturday Events

3-17-90

Free

Highlights

Robert Shaw will conduct two choirs, totaling nearly 400 singers, at the All-Nebraska Choral and Orchestral Festival at 8 p.m. tonight at the Lied Center, 301 N. 12th St. The choral groups will be accompanied by the Lincoln and Omaha symphony orchestras. The concert will be repeated at 2 p.m. Sunday.

Displays of gems and minerals and a fossil dig will be part of the Lincoln Gem and Mineral Club's annual show at Pershing Auditorium, 226 Centennial Mall South, today and Sunday. Hours are 9 a.m.-8 p.m. today and 9 a.m.-5 p.m. Sunday.

★ Reminder ★

The renovation of the University of Nebraska State Museum, 14th and U streets, will be celebrated with a day-long children's festival today.

Government

University of Nebraska Board of Regents, Varner Hall, 3835 Holdrege St., 8 a.m.

Special Events

Home, Garden and Leisure Living Show, Agriculture Hall, State Fair Park, noon-10 p.m.

Lincoln Gem and Mineral Club annual show, Pershing Auditorium, 226 Centennial Mall South, 9 a.m.-8 p.m.

Performing Arts

"Top Girls," Studio Theater, Temple Building, 12th and R streets, 8 p.m.

All-Nebraska Choral and Orchestral Festival, Lied Center for Performing Arts, 301 N. 12th St., 8 p.m.

"A Perfect Analysis" and "Slam!," Lincoln Community Playhouse, 2500 S. 56th St., 7 and 9 p.m.

Conferences

Nebraska DECA Career Development Conference, Cornhusker Hotel, 333 S. 13th St.; 800 expected.

Nebraska School Board Association, Hilton Hotel, 141 N. Ninth St.

Knights of Pythian Sisters, Holiday Inn Northeast, 5250 Cornhusker Highway; 100 expected.

Step Family Association, Lincoln Center Building, 215 Centennial Mall South, and Hilton Hotel, 141 N. Ninth St.

Local Organizations

National Association of Retired Federal Employees, Knolls, 2201 Old Cheney Road, 11 a.m.

Overeaters Anonymous, Sheridan Lutheran Church, 37th Street and Sheridan Boulevard, Room 208, 8:30 and 10 a.m.

Narcotics Anonymous, Lincoln General Hospital cafeteria, 2300 S. 16th, 7:30 p.m.

UNL Gay, Lesbian Coming Out Support Group, 3 p.m., for location call 472-5644.

Alcoholics Anonymous: As Bill Sees It, Women's Group, First-Plymouth, 20th and D, 9 a.m.; Gentlemen's Coffee Group, 301 P, 9 a.m.; Saturday Morning Men's Group, 2015 S. 16th, 9:30 a.m.; Let's Think About It, 3850 Van Dorn, 10 a.m.; Women's Group, Westminster Presbyterian, 26th and South, 11 a.m.; Women's Mellow Yellow, Christ UMC, 4530 A, 11 a.m.; New Friends, 301 P, 11 a.m.; Practical A.A., 1145 F, Apt. 6, 5 p.m.; Two-Pers, 301 P St., 5:15 p.m.; Spanish Speaking, 2300 O, 6:30 p.m.; Good Neighbor Group, 301 P, 7:30 p.m.; Maverick, Westminster Presbyterian, 26th and South, 8 p.m.; Midtown, St. David's, 63rd and Judson, 8 p.m.; Independence Center, 1650 Lake, 8 p.m.; Staying Sober, non-smoking, Bryan Memorial Hospital, conference room, 1600 S. 48th, 7:30 p.m.; Last Call, 301 P, 11:45 p.m.

Al-Anon: Bethany Christian, 66th and Aylesworth, 10 a.m.; Men's Alanon, Christ Methodist, 45th and A, 11 a.m.; Newcomers, Independence Center, 1650 Lake St., 8 p.m.

Alateen, YWCA, 15th and N, 1 p.m.

Editor's note: The Lincoln Star attempts to include in this column those events which are of interest to the general public or serve a public purpose and which are open to the public.

(Persons wishing to suggest material for listing should address it to Lucy Olson, Box 81669, Lincoln 68501.)

Thursday, March 15, 1990

10A — The Capital Times, March 14, 1990



Lincoln Gem and Mineral Club, Inc.

P.O. Box 5342 Lincoln, Nebraska 68505

Invites You to Attend its
Big 32nd Annual

Gem & Mineral Show

March 17th & 18th, 1990

Dealers-Programs-Rough-Agate-Jade-Fossils-Minerals
Displays-Jewelry Maker's Supplies and More

—Free Fossil Dig—

ADMISSION

Adults \$2.00 · Children Under 8, Free with Adult

SHOW HOURS

Sat, March 17th, 9:00-8:00 · Sun, March 18th, 9:00-5:00

Pershing Auditorium 226 Centennial Mall South



Paid



Lincoln Gem and Mineral Club, Inc.
P.O. Box 5342 Lincoln, Nebraska 68505

Invites you to attend its
Big 32nd Annual

Gem & Mineral Show

March 17 & 18, 1990

Dealers-Programs-Rough-Agate-Jade-Fossils-Minerals-
Displays-Jewelry Maker's Supplies-and More

Free Fossil Dig

SHOW HOURS:

Sat, March 17, 9:00-8:00
Sun, March 18, 9:00-5:00

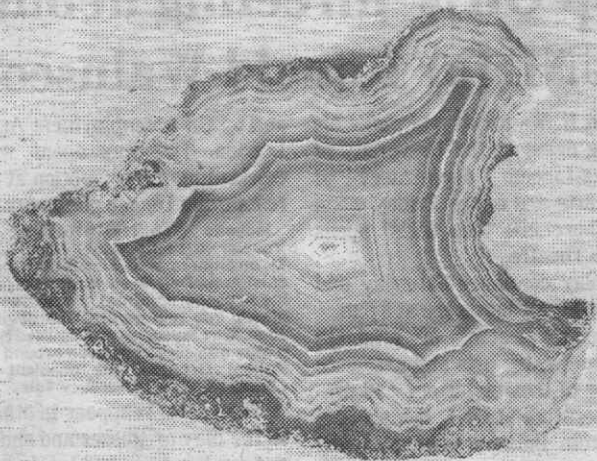
ADMISSION
Adults, \$2.00
Children under 8, free with adult

Pershing Auditorium 226 Centennial Mall South



12H

LINCOLN, NEB. SUNDAY JOURNAL-STAR, MARCH 11, 1990



Fossil dig to be part of show

This agate from Mexico is among the many that can be seen at the Lincoln Gem and Mineral Club's 32nd annual show at Pershing Municipal Auditorium, 226 Centennial Mall South, Saturday and next Sunday. Visitors will have a chance to sift through weathered limestone and shale to find their own Pennsylvanian and Permian age invertebrate fossils. The show also includes retail dealers, demonstrations and illustrated lectures. Hours Saturday are from 9 a.m. to 8 p.m. and next Sunday from 9 a.m. to 5 p.m. Admission is \$2 for adults; children under 8 are admitted free with adults.



Lincoln Gem and Mineral Club, Inc.
P.O. Box 5342 Lincoln, Nebraska 68505



Invites you to attend its Big 32nd Annual Gem & Mineral Show March 17 & 18, 1990

Dealers-Programs-Rough-Agate-Jade-Fossils-Minerals--
Displays-Jewelry Maker's Supplies-and More

Free Fossil Dig



SHOW HOURS:
Sat., March 17, 9:00-8:00
Sun., March 18, 9:00-6:00

ADMISSION
Adults, \$2.00
Children under 8, free with adult



Pershing Auditorium 226 Centennial Mall South

MONDAY MORNING MARCH 12, 1990

*Free
Publicity*

MONDAY

News You Can Use In The Week Ahead

Community — Members of the Community Congress, Lincoln's new comprehensive planning group, will hear citizen comments at two meetings today. City Council member Coleen Seng will host the meetings at 7:30 a.m. at the Bethany Pantry, 66th Street and Cotner Boulevard, and at 7:30 p.m. at the Northeast Senior Center, 6310 Platte Ave. Both meetings are open to any Lincoln resident.

Gems — Displays of gems and minerals, informative programs and a chance to dig for fossils will highlight the Lincoln Gem and Mineral Club's annual show at Pershing Auditorium, 226 Centennial Mall South, Saturday and Sunday. Show hours are 9 a.m.-8 p.m. Saturday, and 9 a.m.-5 p.m. Sunday.

Irish — In honor of St. Patrick's Day on Saturday, here is an observation by George Bernard Shaw, one of Ireland's most quoted sons: "An Irishman's heart is nothing but his imagination."

Candidates — Friday at 5 p.m. is the filing deadline for non-incumbent candidates for public offices and for delegates to the Republican and Democratic county conventions. Filing information is available at the Election Commissioner's Office, 555 S.

Ninth St.

Food — Area Boy Scouts and Cub Scouts will launch their food drive for the Lincoln Food Bank this weekend, as part of a nationwide appeal. Scouts will distribute bags door to door Saturday and return next week to collect the filled bags. Note: The date listed on the bags is wrong. Bags should be placed outside the door March 24.

Leisure — More than 100 booths will offer products for homes, gardens and recreational activities at the 13th Annual Home, Garden and Leisure Living Show at the State Fair Park's Agriculture Hall Friday through Sunday. Also included this year, will be an arts and crafts corner offering works of area artists. Hours for the free show are 6-10 p.m. Friday, noon-10 p.m. Saturday, and noon-5 p.m. Sunday.

Omaha — For a schedule of springtime happenings in the Omaha area, get the 1990 Spring Events calendar available free from the Greater Omaha Conventions and Visitors Bureau. To receive the calendar, write to the bureau, 1819 Farnam St., Suite 1200, Omaha, Neb. 68183. Or call toll-free 1-800-332-1819.

— Compiled by Lucy Olson

Lincoln Star

FOCUS

7H (LINCOLN, NEB. SUNDAY JOURNAL-STAR, MARCH 18, 1990)

Lincoln Gem and Mineral Club Show
— Exhibition Hall, Pershing Municipal
Auditorium, 226 Centennial Mall
South, 9 a.m.-5 p.m. today. □

7H LINCOLN, NEB. SUNDAY JOURNAL-STAR MARCH 11, 1990

Lincoln Gem and Mineral Club Show
— Exhibition Hall, Pershing Municipal
Auditorium, 226 Centennial Mall
South, 9 a.m.-8 p.m. Saturday; 9
a.m.-5 p.m. next Sunday. □

HOST

* * * * *

**LINCOLN
GEM &
MINERAL
CLUB**

* * * * *

**NEBRASKA
STATE SHOW
MARCH 17-18
1990**