

LINCOLN GEM  
and  
MINERAL CLUB, Inc.

PROUDLY PRESENTS ITS

31st ANNUAL SHOW



PERSHING  
AUDITORIUM

Saturday March 18, 1989  
9:00 AM to 8:00 PM

Sunday, March 19, 1989  
9:00 AM to 5:00 PM

" WEEKEND OF GEMS "

OFFICIAL PROGRAM

The Directors and Members of Lincoln Gem and Mineral Club welcome you to our 31st annual Gem and Mineral Show. It is our purpose to reveal to you the beauty of nature and the further improvement implemented by man.

We hope that you will enjoy our dealers' wares, participate in the "Prospecting," and delight in the exhibits and demonstrations. If you have any interest in learning more about our organization, either as an adult or as a youth, please ask at the table near the entrance.

ENJOY ! ! !

Fred B. Holbert, President

Welcome to the Wonderful World of Gems and Minerals - Fantasy in Reality. This is our 31st annual show and you will find many interesting displays of gems, minerals, jewelry, slabs, rough, fossils and crystals in all forms, shapes and sizes - almost anything the mind can think of will be here. We hope that you will enjoy yourselves looking at the displays, dealers, and at the work that our demonstrators are doing.

If you have any questions please stop at our club desk. We will be looking forward to seeing you at our club meetings on the 4th Saturday of each month at Nebraska Center at 7:30 P.M. or at our 32nd Annual Show next year here at Pershing Auditorium on March 17 and 18, 1990.

John Harrison, Show Chairman

#### 1989 Officers & Directors

President	Fred B. Holbert
1st Vice-Pres.	Gerald Moore
2nd Vice-Pres.	David Heffelbower
Recording Secretary	Vera Mae Lyman
Treasurer	Phyllis N. Parks
Board Members	Shirley Rockel, Don Phillips, Roger Pabian, Francis Belohlavy



## R E T A I L   D E A L E R S

L & R Lapidary	Janesville, Minnesota
Westside Agate	Ames, Iowa
Simon's Lapidary	Lincoln, Nebraska
Lentz Lapidary	Mulvane, Kansas
Wisconsin Gems & Custom Jewelry	Owen, Wisconsin
Custom Gems	Omaha, Nebraska
Rusty's Rock Shop	Decatur, Illinois
The Caprock	Rock Island, Illinois
Hunnicut Gems & Jewelry	Fairfield, Iowa
Johnson Agate	Mankato, Minnesota
Schooler's Minerals & Fossils	Blue Springs, Missouri
J. J. & L. Rocks & Minerals	Hickman, Nebraska
Andria Brea Gem Co.	El Cajon, California
The Gem Shop, Inc.	Cedarburg, Wisconsin

### DEMONSTRATORS

Sphere Making & Spere Machines	Ed Junker Woodriver, Ne.
Carroll Originals	Bev & Hugh Carroll Fort Dodge, IA
Stained Glass/Agate Windows	Henry Hohnholt Kearney, NE
Vertebrate Fossil Preparation	Chris Rudnick Lincoln, NE
Trailside Museum, Fort Robinson	David Nixon Lincoln, NE
Faceting by Francis Belohlavy, O'Neill, Nebraska	
Lapidary by David Heffelbower, Lincoln, Nebraska	
Silverwork by David Bilyeu , Lincoln, Nebraska	
Cup Machine & Lapidary-Roger Pabian & Bill White	

### ACTIVITIES

Sapphire Dig - Concentrate from Montana -50¢  $\frac{1}{4}$  cup  
(Lights & Magnifiers helpful.)

Fossil Hunt of Nebraska Materials

Rock Races - Fine Oaken Track - Kids Grabbag prizes  
Big Guys - Prizes both days - 25¢ fee

Nebraska Rock Clubs - Case or Table -People's Choice  
Competition for prizes

Nebraska Material Cabochon Tontest - any size/shape  
Senior Division and Junior Division

**Lincoln Gem and Mineral Club, Inc.**

*takes great pleasure in presenting to*



---

*This Award of Appreciation*

*for participation in the*

**31st ANNUAL GEM AND MINERAL SHOW**

**MARCH 18 and 19, 1989**

*And B. Holbert*  
\_\_\_\_\_

**PRESIDENT**

*John D. Harrison*  
\_\_\_\_\_

**SHOW CHAIRMAN**



LINCOLN GEM AND MINERAL CLUB, INC.

presents

Our 31st Annual Gem & Mineral Show

March 18 and 19, 1989

Pershing Municipal Auditorium

Lincoln, Nebraska

Admission \$2.00  
8 and under Free

Hours:  
Saturday 9 to 8  
Sunday 9 to 5

This card good for 50¢ off each paid admission.

One Card Good for Entire Family or Group

**Oxford**<sup>®</sup>

FILE FOLDER  
NO. 40518

MADE IN U.S.A.

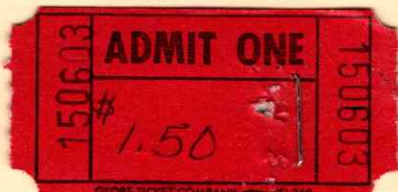
ESSELTE

**IMPORTANT**

**IMPORTANT**

**IMPORTANT**

*(Sunday Hand stamp)*



*(Starting sales  
# 150 604)*

*w/ discount card (Number of admissions  
per card written on card)*



*(Starting sales  
# 470 996)*

*Entire ticket deposited  
in container upon  
entering Show.*

# MONDAY

News You Can Use In The Week Ahead

**St. Patrick** — In honor of St. Patrick's Day, Friday, a handsome Irishman offers this observation: "Humor is like a feather pillow. It is filled with what is easy to get but gives great comfort."

**Pancakes** — Pancakes will be selling like hotcakes Thursday at Pershing Auditorium, 226 Centennial Mall South. The Lincoln Sertoma Clubs' Annual Pancake Jamboree again promises plenty of pancakes accompanied by sausage and beverages from 7 a.m. to 7:30 p.m. Admission is \$2.50 and free for children 5 years of age and younger.

**Back-to-UNL** — A free back-to-school workshop designed for people who are considering re-entering the University of Nebraska-Lincoln will be offered Tuesday at the Nebraska Center for Continuing Education, 33rd and Holdegre streets. Representatives from admissions, advising, financial aid and several UNL colleges will be on hand to provide information from 6:45 to 9 p.m.

**Races** — Monster trucks will race over full-sized automobiles and mini-sprint race cars, motorcycles and four-wheel all-ter-

rain vehicles will compete in the Motor Sports Winter Nationals and Monster Truck Race Friday and Saturday at Pershing Auditorium, 226 Centennial Mall South. Shows start at 8 p.m. both days.

**Cranes** — Thousands of sandhill cranes can be seen along a 60-mile stretch of the Platte River north of Hastings in March and the first part of April. Early morning and evening hours are the best times for viewing, according to the Adams County Visitors Bureau. For information concerning tours, maps and special lodging rates, call the visitors bureau toll-free at 1-800-247-6167, Ext. 872.

**Gems** — Gemstones, from rough rocks to finished jewelry, will be on display Saturday and Sunday at Pershing Auditorium, 226 Centennial Mall South. Also displayed at the Lincoln Gem and Mineral Club show will be fossils and minerals. Dealers from across the country will be on hand to offer equipment and jewelry for sale. Show hours are 9 a.m. to 8 p.m. on Saturday and 9 a.m. to 5 p.m. on Sunday.

— Compiled by Lucy Olson

THE LINCOLN STAR  
Monday, March 13, 1989  
PAGE 2

THE LINCOLN STAR  
Thursday, March 16, 1989  
PAGE 19

The Lincoln Star

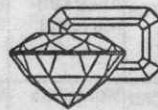
Friday, March 17, 1989

Page 23



## Lincoln Gem and Mineral Club, Inc.

P.O. Box 5342 Lincoln, Nebraska 68505



Invites you to attend its  
Big 31st Annual

## Gem & Mineral Show March 18 & 19, 1989

Dealers-Programs-Rough-Agate-Jade-Fossils-Minerals-  
Displays-Jewelry Maker's Supplies-and More



**SHOW HOURS:**  
Sat., March 18, 9:00-8:00  
Sun., March 19, 9:00-5:00

**ADMISSION**  
Adults, \$2.00  
Children under 8, free with adult



Pershing Auditorium

226 Centennial Mall South

MARCH 18 - THE LINCOLN GEM AND MINERAL CLUB will hold its 31st annual show from 9 a.m. to 8 p.m. Saturday and 9 a.m. to 5 p.m. Sunday at Pershing Auditorium. Show visitors will be able to search for sapphire-bearing gravels imported from Montana. The new traveling display of the University of Nebraska State Museum will feature nearly 90 specimens of invertebrate and vertebrate fossils from Nebraska's geological past.



**Lincoln Gem and Mineral Club, Inc.**

P. O. Box 5342

Lincoln, Nebraska 68505

Invites you to attend its

**Big 31st Annual**

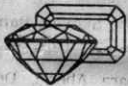
**Gem & Mineral Show**

March 18, 19, 1989



**Pershing Auditorium**

226 Centennial Mall South



Dealers — Programs  
Jasper — Rough  
Agate — Jade — Fossils

Turquoise — Displays  
Jewelry Maker's Supplies  
and More

**SHOW HOURS:**

Saturday, March 18, 9:00-8:00  
Sunday, March 19, 9:00-5:00

**ADMISSION:**

Adults ..... \$2.00  
Children, under 8,  
free with adult.

(Focus)



## Week's things to do

□ Admission charged

# Lincoln Prospect for sapphires at gem show

Fledging prospectors can dig for sapphires and marine invertebrate fossils at Lincoln Gem and Mineral Club's 31st annual show on Saturday and next Sunday at Pershing Municipal Auditorium, 226 Centennial Mall South.

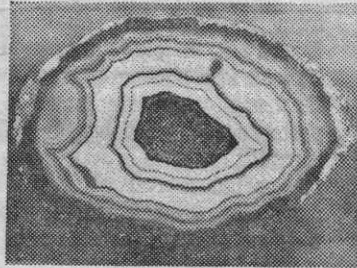
Show hours Saturday are 9 a.m. to 8 p.m., and next Sunday 9 a.m. to 5 p.m. Admission is \$2, with children under 8 free with an adult.

Sapphire-bearing gravels have been imported from Montana, and for a fee visitors will be able to search for these elusive gems. Gerald Moore of Lincoln will assist.

### Dig for fossils

Those interested in looking for life of the past will have a chance to dig through late Pennsylvanian age shales from Nebraska and search for brachiopods, crinoids and possibly even shark teeth. There also will be a charge for this event. Don Phillips of Lincoln will provide help for novices.

The University of Nebraska State Museum will show its new traveling



Gems and minerals such as this polished agate slab from Estacion Moctezuma, Chihuahua, Mexico, can be seen at the Pershing show next weekend.

display, which contains nearly 90 specimens of invertebrate and vertebrate fossils from Nebraska's geological past.

A photographic display of Nebraska's gemstones, featuring agates, jasper, and silicified wood, will be provided by the Conservation and Survey Division of the Institute of Agri-

culture and Natural Resources.

### 14 dealers

There will be 14 dealers from eight states with merchandise including finished jewelry, carvings, ornamental stones, jewelry-making supplies and tools, fossils, minerals and rough uncut gemstones.

For aspiring young collectors, the junior club, headed by Janet Wright, will have available rock and mineral samples as well as educational materials.

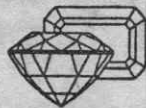
Demonstrations will include how to make gemstone picture and trees by Bev Carroll of Fort Dodge, Iowa; how to use agates to make windows by Henry Hohnholt of Kearney; sphere making by Ed Junker of Wood River; silversmithing by Dave Bilyeu; cabochon cutting by David Heffelbower; gemstone faceting by Francis Belohlavy; and novel gemstone cutting techniques and tools by Roger Pabian, Fred Holbert and Bill White.

State Treasurer Frank Marsh will present a program on the carvings that decorate the outside of Nebraska's Capitol.



## Lincoln Gem and Mineral Club, Inc.

P.O. Box 5342 Lincoln, Nebraska 68505



Invites you to attend its  
Big 31st Annual

## Gem & Mineral Show

March 18 & 19, 1989

Dealers-Programs-Rough-Agate-Jade-Fossils-Minerals-  
Displays-Jewelry Maker's Supplies-and More



SHOW HOURS:  
Sat., March 18, 9:00-8:00  
Sun., March 19, 9:00-5:00

ADMISSION  
Adults, \$2.00  
Children under 8, free with adult

Pershing Auditorium

226 Centennial Mall South



Motor Sports Winter Nationals and  
Monster Truck Race — Pershing  
Municipal Auditorium, 226 Centennial  
Mall South, 8 p.m. Friday-Saturday. □

"Fantasia" — films, events, artist and  
lunch, Lincoln Community Playhouse,  
2500 S. 56th St., 10 a.m.-2 p.m.  
Saturday. □

Home, Garden and Leisure Show — Ag  
Hall, State Fair Park, 6-10 p.m.  
Friday, 11 a.m.-10 p.m. Saturday, 11  
a.m.-6 p.m. next Sunday. □

Lincoln Gem and Mineral Club Show  
— Pershing Municipal Auditorium,  
226 Centennial Mall South, 9 a.m.-8  
p.m. Saturday, 9 a.m.-5 p.m. next  
Sunday. □

Sunrise-Sunset Flea Market — swap  
meet, off 27th Street entrance to State  
Fair Park, 7 a.m.-5 p.m. today, Satur-  
day-next Sunday.

will be judged. Registration for entries is \$2. The public is invited.

**MARCH 18 - THE LINCOLN GEM AND MINERAL CLUB** will hold its 31st annual show from 9 a.m. to 8 p.m. Saturday and 9 a.m. to 5 p.m. Sunday at Pershing Auditorium. Show visitors will be able to search for sapphire-bearing gravels imported from Montana. The new traveling display of the University of Nebraska State Museum will feature nearly 90 specimens of invertebrate and vertebrate fossils from Nebraska's geological past.

**MARCH 18 - THE 7TH ANNUAL EGG HUNT FOR SPECIAL NEEDS**

1989 Show Financial Report - subject to audit in January 1990 :

Incomes -	
Retail Dealer Space	3500.00
Demonstrator Space	90.00
Gate Receipts - Sat.	2144.00
Sun.	1574.50
Miscellaneous -	
Sapphire Dig	221.45
Rock Races	32.30
Int. 3 mo. C.D.	52.32
<u>Total Income</u>	<u>306.07</u>
Expenses -	
Pershing - Floor	1800.00
Extra Drapes	97.20
3rd table "	19.50
Purchase Display Cases (nine)	1916.70
Security	295.00
Insurance	288.00
Table cover & tape	275.00
Misc. Floor Expense	137.22
Publicity -	38.93
Flayers & Postage	111.47
Discount cards	126.84
Media ads	862.27
Sapphire Dig	1100.58
Rock Race Expense	234.58
Program Lecturers	32.65
Special Display Competitions	150.00
Recognitions	75.00
Hand-out Programs (1500)	87.23
Dealer Chairman Expense	81.23
Courtesy buffet dinners	24.66
Sales Tax (based on Gate)	298.00
<u>Total Expenses</u>	<u>198.41</u>
Net Gain on Show	5233.19
Junior activities at show netted	\$ 41.00
Possible Dig for Scholarship netted	\$ 14.03
<u>Net Gain on Show</u>	<u>\$ 2381.38</u>

\$ 7614.57

Thoughts & Recommendations from the 1989 Show Committee at a Post Show Critique & Debriefing Session on March 28, 1989.

Recommend - Appoint a Display Chairman to work with Floor Chairman to coordinate Dealer Displays near their booths, Special Displays placed so recognition can be easily noted and perhaps spotlighted or 'mapped' for convenience of Information Desk.

Suggestion - If meal planned a policy should be established by Board for 'Free' non-member dinners - such as Dealers, Demonstrators, Special Features, or none.

Thought - Make sure all displays are able to be monitored so there will be no repeat of the Black Lite Specimen loss at recent show.

Thought - Check possibility of strictly long-wave Black Lite Display for Safety reasons.

Bring Junior section to a more prominent display area with better lighting.

Rock Races could have used more prizes (Per it's chairman) and better lighting.

Recommend - More people involved in set-up and tear-down as well as more individual displays as only about 1% of membership helped and only about 30% displayed.

Recommend - If a Cabochon Contest (or other) materials & location be identified.

Recommend - More mailing as good return this year, retain O St. Banner but have it read from both directions.

Recommend - More flyers be put out in grocery stores and available places by members.

Recommend - Number our club display cases so as to facilitate use and return.

Suggestion - Move Club Office to overhead door area on Set-up Day and keep someone on overhead door service at all times.

Thoughts - Regarding 2 day pass - Recommend no follow up, just remind people who arrive after a certain time that the show will be closing but will be open the next day.

Submitted by Phyllis Parks, '89 Show Secretary (with help from Vera)

Meeting attended by:

John Harrison, Show Chairman  
David Hefelbower, Floor Chairman  
Jerry Moore, Asst. Chairman & Sapphire Dig Chairman  
Jim Parks, Dealer Chairman  
Roger Pabian, Publicity  
Jim Marburger  
Kevin Schartzman  
Vera Lyman, Ticket Sales  
Marie & Lynn Wells, Recognitions  
Ed Ridge, Rock Races  
Phyllis Parks, Secy. for Show Chairman