

Lincoln Gem and Mineral Club, Inc.

P. O. Box 5342

Lincoln, Nebraska 68505



Invites you to attend its

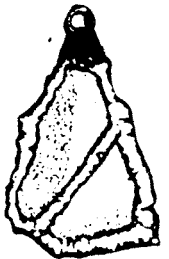
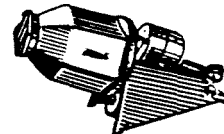
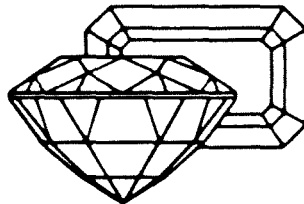
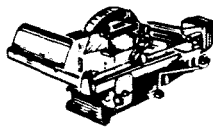
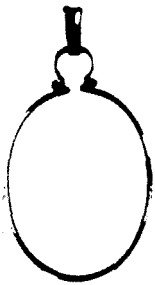
Big 31st Annual

Gem & Mineral Show

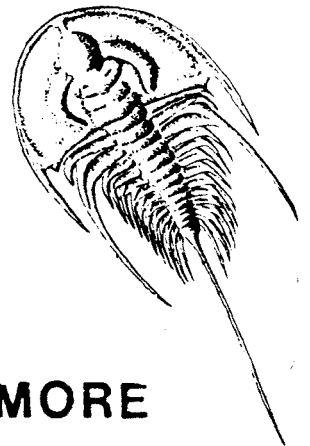
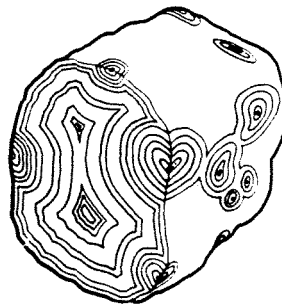
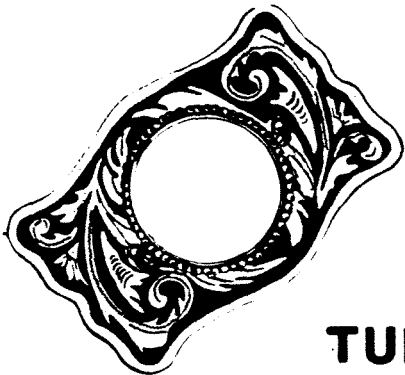
MARCH 19, 20, 1988

Pershing Auditorium

226 CENTENNIAL MALL SOUTH



**TUMBLERS-DEALERS-PROGRAMS-JASPER-ROUGH-
AGATE-JADE-FOSSILS-MINERALS-SAWS-**



**TURQUOISE-DISPLAYS-FINDINGS
JEWELRY MAKER'S SUPPLIES- and MORE**

SHOW HOURS:

Saturday, March 19, 9:00 - 8:00
Sunday, March 20, 9:00 - 5:00

ADMISSION:

Adults.....\$2.00
Students, Seniors...\$1.50
Children.....\$0.50
Under 6, free with adult.

**LINCOLN GEM
and
MINERAL CLUB, Inc.**

PROUDLY PRESENTS ITS



30th ANNUAL SHOW

**PERSHING
AUDITORIUM**

**March 19, 1988
9:00 AM---8:00PM**

**March 20, 1988
9:00AM---5:00 PM**

OFFICIAL PROGRAM

WELCOME

On behalf of the directors and members of Lincoln Gem and Mineral Club, it is my pleasure to welcome you to our 30th annual show. We hope that you will find the exhibits both entertaining and educational and that dealers and demonstrators will have unusual and unique merchandise that you will select to purchase.

Proceeds from our shows have gone to finance many earth science educational projects at both the local and national level. Your attendance assures that we can carry out these projects in the future.

Thank you.

Roger K. Pabian, Chairman

PRESIDENT'S GREETING

It is my pleasure to welcome you to our 30th annual show. We hope you will enjoy the kind of family activity we provide. Some of you may wish to further pursue one of the many aspects of the rock hobby such as lapidary, mineralogy, or paleontology to mention but a few. We invite you to visit our club booth to seek information on our meetings and other club activities, and to join our group.

Thank you.

Kevin Schwartzman, President

YOUR SHOW COMMITTEE

Dealers and demonstrators,	Fred Holbert
Floor,	Jim Null
Tickets,	Wilma Heffelbower, Phyllis Parks
Publicity,	Vera Lyman
Working shop,	Michael Smith
Programs,	Kevin Schwartzman
Ribbons,	Claude Scott

ILLUSTRATED PROGRAMS

SATURDAY, MARCH 19

- 11:00 AM---Faceting basics for hobbyists, Lyle Peterson
- 1:00 PM---Underwater paleontology in Nebraska, R. George Corner, University of Nebraska State Museum
- 3:00 PM---Badlands Bonanza, a Nebraska Field Trip, Barry and Dolores Rose, Grand Island Earth Science Society.
- 4:30 PM---Recent Paleontological Discoveries in the Upper Jurassic of Colorado: Dinosaurs and their Friends, Jim Kirkland, University of Nebraska, Lincoln
- 6:30 PM---Explosive Vulcanism: A study of the Lower Whitney Ash bed of Western Nebraska, Kevin Schwartzman, University of Nebraska

SUNDAY, MARCH 20

- 1:00 PM---Lapidary Techniques, Thomas White, Independence, Missouri
- 3:00 PM---Lake Superior Agates, Roger K. Pabian, University of Nebraska

DEALERS

Mountain Minerals Int.,.....Louisville, CO
Bruce Simon.....Lincoln, NE
Lentz Lapidary,.....Mulvane, KS
West Side Agates,.....Ames, IA
J J & L Rocks and Minerals,.....Hickman, NE
Wisconsin Gems & Custom Jewelry,.....Owen, WI
Milliren's Rocks & Gifts,.....Overland Park, KS
Geodon Gems,.....Aurora, IL
L & R Lapidary & Jewelry,.....Janesville, WI
Custom Gems, Inc.,.....Omaha, NE
Honeycutt Gems & Jewelry,.....Fairfield, Iowa
Johnson Agate Co.,.....Mankato, MN
Andria Brie Gem Co.,.....El Cajon, CA

SPECIAL ACTIVITIES

GOLD PANNING*

John Rice,.....Department of Geology,.....University of Nebraska

*There is a \$1.00 charge for each pan of gold bearing sand.

SAPPHIRE DIGGING*

Gerald Moore, and committee. Concentrate from French Bar Mine, Montana

*There is a 50 cent charge per quarter cup of sapphire concentrate.

FOSSIL COLLECTING*

Don Phillips, and committee. Look for fossils from late Pennsylvanian shales from Nebraska. *There is a 25 cent charge per cup of shale.

JUNIORS*

Janet Wright, and committee. Build your own beginning rock collection.

*Charges based on material selected.

DEMONSTRATORS

Agate windows.....Henry Hohnholt, Kearney, NE

Silversmithing.....Patty Hall, Omaha, NE

Silver casting, jewelry making,.....Mary McCartney, Grand Island, NE

LaVerne Jess, Grand Island, NE

Franca Fuller, Kearney, NE

Sphere making.....Ed Junker, Wood River, NE

Faceting.....Dave Bilyeu, Lincoln, NE

Francis Belohlavy, Lincoln, NE

Lapidary specialties.....Thomas White, Independence, MO

Fossil preparation.....Chris Rudnick, Greg Brown, Kevin McCool

University of Nebraska State Museum, Lincoln, NE

EDUCATIONAL FEATURE

Trailside Museum, Fort Robinson, NE. Featuring literature on Nebraska's geology, paleontology, mineralogy, field trips, etc. Dave Nixon.

Lincoln Gem and Mineral Club, Inc.

takes great pleasure in presenting to



This Award of Appreciation

for participation in the

30th ANNUAL GEM AND MINERAL SHOW

MARCH 19 and 20, 1988

Ken G. Schmatton

PRESIDENT

Roger K. Schmatton

SHOW CHAIRMAN

Saturday Events

Highlights

✓ Rock collecting activities, gold panning demonstrations and displays, ranging from rough stones to finished jewelry, will be featured at the 31st annual Gem and Mineral Show at Pershing Auditorium today and Sunday.

★ Reminder ★

It's spring break time at the University of Nebraska-Lincoln. There will be no classes at UNL next week.

Special Events

Home, Garden and Leisure Living Show, Agricultural and Exposition halls, State Fair Park, 10

a.m.-10 p.m.
Lincoln Gem and Mineral Show, Pershing Auditorium, 226 Centennial Mall South, 9 a.m.-8 p.m.

Performing Arts

"Holy Ghosts," Studio Theater, Temple Building, 12th and R streets, 8 p.m.

"Brighton Beach Memoirs," Lincoln Community Playhouse, 2500 S. 56th St., 8 p.m.

"Some Enchanted Evening," dinner theater, Lincoln University Club, 13th and P streets. Dinner, 6:30 p.m.; show, 8 p.m.

Conferences

Nebraska Distributive Education Clubs of America, Cornhusker Hotel, 333 S. 13th St.; 860 expected.

Trees for Nebraska Conference, UNL East Campus Union.

Nebraska Wine Civil Air Patrol, Villager Motor Inn, 5200 O St.; 175 expected.

Local Organizations

Abuse Victims Support Group, 1920 S. 16th, 10 a.m.
Overeaters Anonymous, Sheridan Lutheran Church, 37th Street and Sheridan Boulevard, Room 208, 10 a.m.

Narcotics Anonymous, Independence Center, 2440 St. Marys, 8 p.m.

Smokers Anonymous, Independence Center, 2440 St. Marys, 2 p.m.

UNL Gay, Lesbian Coming Out Support Group, 3 p.m., for location call 472-5644.

Alcoholics Anonymous: As Bill sees it, women's, First-Plymouth, 20th and D, 9 a.m.; Oasis Club, 2635 O, 9 a.m.; Saturday Morning Men's Group, 2015 S. 16th, 9:30 a.m.; Women's Group, Westminster Presbyterian, 26th and South, 11 a.m.; Two-Fers, 129 S. 27th St., 5:15 p.m.; Spanish Speaking, 2027 S, 6:30 p.m.; Good Neighbor Group, 129 S. 27th, 7:30 p.m.; Front Door Group, 737 N. 22nd, 7:30 p.m.; Maverick, Westminster Presbyterian, 26th and South, 8 p.m.; Midtown, St. David's, 63rd

and Judson, 8 p.m.; Independence Center, 2440 St. Marys, 8 p.m.; Staying Sober, non-smoking, Bryan Memorial Hospital, conference room, 1600 S. 48th 7:30 p.m.; Last Call, 129 S. 27th, 11:45 p.m.

Al-Anon, Bethany Christian, 66th and Aylesworth, 10 a.m.; Men's Alanon, Westminster Presbyterian, 26th and South, 11 a.m.; Spanish Speaking, 2027 S, 6:30 p.m.; Newcomers, Independence Center, 2440 St. Marys, 8 p.m.

Editor's note: The Lincoln Star attempts to include in this column those events which are of interest to the general public or serve a public purpose and which are open to the public. (Persons wishing to suggest material for listing should address it to Lucy Olson, Box 81669, Lincoln 68501.)

The Lincoln Star

Saturday, March 19th, 1988

Big 30th Annual Gem & Mineral Show

March 19 & 20, 1988

Saturday 9am-8pm

Sunday 9am-5pm



Pershing Auditorium

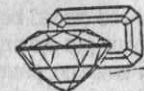
• Pan for Gold

• Dig for Sapphires

• Jasper • Rough Agate • Jade • Fossils •
Minerals • Turquoise • Tumblers &
Dealers • Programs • Displays • Jewelry
Making Supplies • and more



Adults: \$2
Students & Seniors: \$1.50



The Lincoln Star

Friday March 18th 1988

**Big 30th Annual
Gem & Mineral Show**
March 19 & 20, 1988

Saturday 9am-8pm

Sunday 9am-5pm



Perishing Auditorium

• **Pan for Gold**

• **Dig for Sapphires**

• Jasper • Rough Agate • Jade • Fossils •
Minerals • Turquoise • Tumblers &
Dealers • Programs • Displays • Jewelry
Making Supplies • and more



Adults: \$2

Students & Seniors: \$1.50



Big 30th Annual Gem & Mineral Show

Saturday 9am-8pm

Sunday 9am-5pm



Pershing Auditorium

• **Pan for Gold**

• **Dig for Sapphires**

• Jasper • Rough Agate • Jade • Fossils •
Minerals • Turquoise • Tumblers &
Dealers • Programs • Displays • Jewelry
Making Supplies • and more



Adults: \$2
Students & Seniors: \$1.50



Focus section



Week's things to do

□ Admission charge

Lincoln

music

"Piano Extravaganza" — sponsored by the Lincoln Music Teachers Association, O'Donnell Auditorium, Rogers Center for Fine Arts, 50th Street and Huntington Avenue, 2 p.m. today.

Patti Tenney concert — Grace Community Evangelical Church, 6843 South St., 5:45 p.m. Sunday.

Audun Ravnan, UNL professor of piano — Kimball Recital Hall, 11th and R streets, 8 p.m. today.

"It's A Grand Night for Singing" — Lincoln Civic Chorus annual Cabaret Night, Cotner Center for Living, 6635 Fairfax Ave., 8 p.m. today. □

Lincoln High Schools Band Fest — Kimball Recital Hall, 11th and R streets, all day Monday.

Medicine Valley Elementary Chorus, Curtis — spring concert series, Nebraska State Capitol rotunda, noon Tuesday.

Monica Reed, Terry DeJong, junior percussion recital — Westbrook Music Building, 11th and R streets, 4:30 p.m. Tuesday.

Traci Tornquist, master's voice recital — Kimball Recital Hall, 11th and R streets, 4:30 p.m. Tuesday.

Bert Reeves, senior recital — Clemmons Hall, Midlands Lutheran College, Fremont, 7:30 p.m. Tuesday.

Harvi Griffin, harpist — Sheldon Memorial Art Gallery Auditorium, 12th and R streets, 7:30 p.m. Tuesday. □

Lincoln Symphony Orchestra, with pianist Gustavo Romero — O'Donnell Auditorium, Rogers Center for Fine Arts, 50th Street and Huntington Avenue, 8 p.m. Tuesday. □

Jo Hoffman, senior voice recital — Westbrook Music Building, 11th and R streets, 3:30 p.m. Wednesday.

Shiela Torres, junior cello recital — Westbrook Music Building, 11th and

R streets, 4:30 p.m. Wednesday.

Julia Bogorad, flutist, concert — Kimball Recital Hall, 11th and R streets, 8 p.m. Wednesday.

Dave Meints, junior saxophone recital — Westbrook Music Building, 11th and R streets, 4:30 p.m. Thursday.

Lefler Instrumental Concert — Lefler Junior High School, 1100 S. 48th St., 7:30 p.m. Thursday.

Karen Sigers, doctoral piano lecture/recital — Room 119, Westbrook Music Building, 11th and R streets, 8 p.m. Thursday.

The Prairie Wind Quintet concert — Grace Lutheran Church, 22nd and Washington streets, 8 p.m. Friday. □

"Requiem" — Abendmusik: Lincoln series, First-Plymouth Congregational Church, 20th and D streets, 8 p.m. next Sunday. □

theater

Play: "Holy Ghosts" — Studio Theatre, Temple Building, 12th and R streets, 8 p.m. Monday-Saturday. □

Musical: "Some Enchanted Evening" — Lincoln Ensemble Theatre, Lincoln University Club, 13th and P streets, 6:30 dinner, 8 p.m. show. Wednesday-next Sunday. □

Comedy: "The Happiest Millionaire" — Lincoln Northeast High School drama center, 2635 N. 63rd St., 7:30 p.m. Thursday-Friday.

"Frankenstein" — UNL Performance Series, Kimball Recital Hall, 11th and R streets, 8 p.m. Thursday-Friday. □

Comedy: "Brighton Beach Memoirs" — Lincoln Community Playhouse, 2500 S. 56th St., 8 p.m. Thursday-Saturday; 2:30 p.m. next Sunday. □

activities

Reading: "Nebraska: The Individual Voice" — The Coffee House, 1324 P St., 4-5 p.m. today.

"The Russian Short Story and Novel" — Speakers Jim Barstow and Louis

DeGrazia, Vine Congregational Church, 1800 Twin Ridge Road, 7 p.m. today.

Program: "Love Library: The German Connection" — by UNL librarians Elsie Thomas, Eva Sartori, Autumn Wood Activities Center, 5501 Sea Mountain Road, 7 p.m. today.

Speaker series — The Gathering Place, 15th and E streets, Wende Baker, general manager Lincoln Food Bank, "The Basics of Food Banking," noon-1 p.m. Wednesday.

Lecture: "Visionaries, Witches, and Madwomen" — by Professor Elaine Kruse, Brown Bag Lecture Series, State Museum of History, 15th and P streets, noon Thursday.

31st Annual Gem and Mineral Show — Pershing Auditorium, 226 Centennial Mall South, 9 a.m.-8 p.m. Saturday, 9 a.m.-5 p.m. next Sunday. □

11th Annual Lincoln Home & Garden Show — Agricultural Hall and Exposition Hall, State Fair Grounds, 6-10 p.m. Friday; 10 a.m.-10 p.m. Saturday; 11 a.m.-5 p.m. next Sunday.

Paul Mesner Puppets "The World Grows Up" — Unitarian Church, 6300 A St., 1:30 p.m. next Sunday, followed by a presentation of Candace Knapp's sculpture "The Mandala of the Holy Ones," with poetry, music, and dance. □

"Russian Dinner and Dance" — authentic Russian dishes and dancing, Vine Congregational Church, 1800 Twin Ridge Road, 6 p.m. next Sunday.

MONDAY

News You Can Use In The Week Ahead

St. Patrick — For St. Patrick's Day, Thursday, a charming Irishman offers "cultural elevation material" in the form of this Irish proverb: "Drink is the curse of the land. It makes you fight with your neighbor. It makes you shoot at your landlord — and it makes you miss him."

Leisure — The Mad Hatter Marionette Show from Kansas City's Worlds of Fun will be the featured entertainment at the 1988 Home, Garden and Leisure Living Show Friday through Sunday. The show, at the State Fair Park's Agriculture and Exposition halls, will run Friday, 6-10 p.m.; Saturday, 10 a.m.-10 p.m.; and Sunday, 11 a.m.-5 p.m.

Treasure — Sunday's treasure hunt at the State Museum of History, 15th and P streets, is designed for third- and fourth-graders and their families but all hunters are welcome. Treasure-seekers will be sent on a search for some of the often overlooked items on exhibit. Prize bags will be awarded to all those completing the hunt. The hunt, which will run from 2 to 4 p.m., is open to the public, free of charge.

Pancakes — Pancake lovers won't want to miss the 27th annual Sertoma Pancake Jamboree Thursday at Pershing Auditorium, 226 Centennial Mall South, from 7 a.m. to 7:30 p.m. Tickets are \$2.50 with proceeds going to establish a Youth Network with the Lincoln Council on Alcoholism and Drugs.

Basketball — The NCAA Midwest Regional basketball tournament begins at noon Friday at the Bob Devaney Sports Center. The University of Nebraska is hosting first- and second-round tournament games with four games scheduled Friday and two games Sunday.

^{30th}
Gems — Rubies, garnets, turquoise and more — from rough stones to finished jewelry — will be on display Saturday and Sunday at the 31st annual Gem and Mineral Show at Pershing Auditorium, 226 Centennial Mall South. Show hours are Saturday, 9 a.m.-8 p.m.; and Sunday, 9 a.m.-5 p.m.

— Compiled by Lucy Olson

Gem and Mineral show to offer try at collecting

30th
Visitors to the 31st Annual Show sponsored by the Lincoln Gem and Mineral Club will have a chance to partake in some genuine rock collector's activities.

The show will be Saturday from 9 a.m.-8 p.m. and next Sunday from 9 a.m.-5 p.m. at Pershing Auditorium, 226 Centennial Mall South. Admission is \$2 for adults, \$1.50 for seniors and students and 50 cents for children under 12. Children under 6 will be admitted free with an adult.

Gold panning will be demonstrated by John Rice, a graduate student in geology at the University of Nebraska. Visitors will be able to try their hand at gold panning for a small fee.

Sapphire collecting also will be featured. Spectators will be able to buy a small quantity of sapphire-bearing gravel from the world-famous French Bar Mine in Montana, and test their collecting skills for these gems.

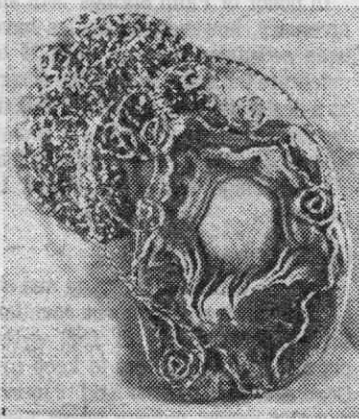
Those interested will have a chance to try for marine invertebrate fossils from washed shale concentrates found in the Pennsylvanian deposits of southeastern Nebraska.

Experienced collectors will staff the above activity booths.

In addition to the hands-on activities, dealers representing six states will show wares ranging from finished jewelry, cloisonne, minerals, fossils, rough gems, findings tools, equipment, books and polished specimens.

Featured displays include lapidary work by Bill White and amethyst quartz crystals by Betty White of Independence, Mo. Roger Pabian will display Laguna agates from Northern Mexico. Agates and lapidary from the collection of Fred Holbert will be displayed. Jim Null and Michael Smith will display Lake Superior agates.

Programs will include Bill White on lapidary techniques, Pabian on



This ladies pendant made with gold wire and Casas Grand Agate from Mexico is one of many items to be displayed.

Lake Superior agates and Jim Kirkland of the Geology Department of the University of Nebraska on his experience collecting dinosaur fossils in Utah and Colorado.

Working demonstrations will include scrimshaw, metal casting, constructing windows from agate slabs and stained glass. Other demonstrations will include silversmithing, rock tree making, cabochon cutting, gem carving, sphere and marble making, faceting and many other things related to the rock hobby.

Dear Vera,

Thank you for your work and dedication to the 1988 gem and mineral show.

Your efforts were apparent in the many billboards and marquees around Lincoln, and many dealers commented on this.

Thanks again for your contribution to the success of the show.

Roger K. Aborn