

2011  
All American Club Award  
Yearbook



Lincoln Gem & Mineral Club, Inc.  
P.O. Box 5342  
Lincoln, Nebraska 68505



ALL-AMERICAN CLUB "Yearbook" AWARD – 2011

SECTION 1 – CLUB INFORMATION (NO POINTS AWARDED)

Club Name & Address: Lincoln Gem & Mineral Club, Inc.  
P.O. Box 5342, Lincoln, NE 68505

Date organized: January 15, 1955 Federation affiliation: Midwest

Number of members: Adults: 54 Honorary/Life: 5 Juniors: 10  
[Don't combine Honorary/Life with total adults]

Meeting Place: Bethany Park Shelter House  
64<sup>th</sup> and Vine Streets, Lincoln, NE  
(Include city, state)

Person filling out form: Name: Sharon Marburger, Historian

Address: 334 Locust, Box 64

City: Hickman State: NE Zip: 68372

Phone: 402.792.2348 E-mail: lgmcsecretary@yahoo.com

Mission or purpose of the club: The purpose of this corporation shall be to study, promote  
an interest in, and disseminate knowledge of lapidary and various Earth Sciences  
including but not necessarily limited to Geology, Paleontology and Mineralogy. It shall  
be a particular purpose of the corporation to provide education in these fields to its  
members and the general public, especially to youth and student groups.



**SECTION 2 – OFFERINGS TO MEMBERS OR GUESTS (30 POINTS POSSIBLE)**

General Meetings: Number of meetings: 9 Average attendance: 23

Guests: Avg. 2 Door Prizes: Yes      No X

**(2a) Programs:** \*Include a separate list of programs for the year, including topic, speaker, etc.

Board Meetings: Number of meetings: 9 Average attendance: 8

Guests: Avg. 2

**(2b) Officers:** \*Include a separate list of officers, directors, and committee chairmen.

Junior Meetings: Number of meetings: 9 Average attendance: 3

Guests: Avg. 1

Adult leader(s): Stella Thiessen

**(2c) Special Group Meetings (Established groups):** Number attending:      Cabbing:     

Faceting:      Metal-working:      Beading:     

Mineral study:      Fossil study:      Intarsia:     

Jewelry making:      Other: Monthly Rock Party – all fields studied [Indicate type.]

**(2d) Social Events:** Number attending:      Picnic: X Banquet:     

Holiday dinner: 23 Other (Describe): Pizza Supper (following Rock Swap)

**(2e) Show** Yes X No      Date(s): April 2-3, 2011

Dealers: Yes X No      Number of dealers: 14

Number of members attending: 60 Number of members working: 27

Demonstrators: Yes X No      Number of demonstrators: 10

Displays: Yes X No      Number of displays: 40

**(2f) Swap** Yes X No      Date(s): January 22, 2011

Dealers: Yes X No      Number of Swappers: 16

Number of members attending: 39 Number of members working: 26



(2g) Special Features: Club library: Yes  No  Number of books: ~250

(2h) Field Trips: Yes  No  Number of trips in field: 2

Other clubs invited? Yes  No  Non-members allowed? Yes  No

Workshop: Yes  No  Web site: Yes  No

\*Include a separate list of workshops.

(2i) URL: [www.lincolngemmineralclub.org](http://www.lincolngemmineralclub.org)

Traveling club display (For other club shows, youth groups, schools, etc.): Yes  No



**SECTION 3 – PUBLICATIONS AND PUBLICITY (15 POINTS POSSIBLE)**

Bulletin: Yes  No  Bulletin name: Pick & Shovel

Editor's name: Sharon Marburger

(3a) \*Include a copy of your bulletin/newsletter.

Meeting notices posted in public places: Yes  No  Where? \_\_\_\_\_

(3b) Meeting notices published in local media: Yes  No   
Where? Lincoln Journal Star, online calendars

(3c & d) Show and Swap fliers posted in public places: Yes  No   
Where? Ken's Kegs; Barberettes; Russ' Markets lunch rooms; Norfolk, NE businesses;  
Auburn, NE businesses; Humboldt, NE businesses; Elk Creek, NE businesses; local  
restaurants; local motels; post office branches; local hospitals; hobby classes; local  
colleges and universities; local businesses; Lincoln Association for Traditional Art  
concerts; social networking sites; State Office Building

Show information published in local media: Yes  No  Where? Lincoln Journal Star;  
Prime Time; Neighborhood Extra; The Voice newspaper; Buy Lincoln magazine

Free or paid ads on TV or radio: Meeting notices: Yes  No   
Show information: Yes  No

Copies of supporting material to include in report: 1) fliers; 2) media articles about the club activities; 3) show ads; 4) show or meeting notices from newspapers; 5) articles copied from club newsletters; 6) other.



**SECTION 4 – SUPPORT FOR REGIONAL FEDERATIONS, AFMS AND OTHER CLUBS (20 POINTS POSSIBLE)**

**(4a)** Members served as Federation Officers, Committee Chairs or committee members:  
Regional federation: Yes  No  (\*Include a separate list of members serving.)

AFMS: Yes  No  (\*Include a separate list of members serving.)

Members attended a Federation convention or show:

Regional Federation: Yes  No  #: 2 AFMS: Yes  No  #: \_\_\_\_\_

Members supported Federation scholarships or endowment funds:

Regional: Scholarship fund: Yes  No  Endowment fund: Yes  No   
AFMS: Scholarship fund: Yes  No  Endowment fund: Yes  No

Members gave programs for other clubs: Yes  No

\*Include a separate list of programs.

**(4b)** Members attended other club shows, swaps, etc.: Yes  No

**(4c)** Members held joint field trips with other clubs: Yes  No

**(4d)** Members displayed/demonstrated at other club shows: Yes  No

**(4e)** Club exchanged bulletins with other clubs: Yes  No  \*Include a separate list.

Supporting material should include lists of all the above persons, positions, etc. and could include pictures, copies of certificates, reports printed in club newsletter, thank-you notes, etc.



**SECTION 5 – COMMUNITY RELATIONS (15 POINTS POSSIBLE)**

**(5a)** Members gave talks or demonstrations at local schools:      Yes   X   No   \_\_\_    
\*Include a separate list of those given.

**(5b)** Members gave talks or demonstrations to local groups:      Yes   X   No   \_\_\_    
\*Include a separate list of those given.

Members maintained displays at local public sites:      Yes   \_\_\_   No   X    
\*Include a separate list of sites.

**(5c)** Members maintained a booth, or an activity, at a local event:      Yes   X   No   \_\_\_    
\*Include a separate list of events.

**(5d)** Members donated materials to school, nursing home, etc.:      Yes   X   No   \_\_\_  

**(5e)** Members active in local affairs:      Yes   X   No   \_\_\_  

Supporting material for the above should provide details for these items, and could include pictures, thank you cards, letters and certificates of appreciation, reports from club newsletter, etc.



**SECTION 6 – GOVERNMENT AGENCY AND LEGISLATIVE RELATIONS (10 POINTS POSSIBLE)**

Members served on governmental agency committees: Yes \_\_\_ No X  
\*Include a separate list of those who served.

Members provided comments on governmental agency proposals, etc.: Yes \_\_\_ No X  
\*Include a separate list of proposals and participants.

**(6a)** Members contacted congressional representatives regarding legislation affecting access to sites, and collecting from same: Yes X No \_\_\_  
\*Include a separate list of representatives contacted and legislation.

**(6b)** Club members supported access/collecting lobbying organizations (such as ALAA): Yes X No \_\_\_  
\*Include a separate list of organization(s).

Supporting materials should include details for all of the above items, reports from club newsletter, and should include copies of correspondence.



**SECTION 7 – OVERALL FORMAT AND PRESENTATION (10 POINTS POSSIBLE)**

This section evaluates the entry on neatness, organization, grammar, spelling, and overall presentation of material.





## SECTION 2 – OFFERINGS TO MEMBERS OR GUESTS

### INDEX

Section 2a	List of Programs
Section 2b	List of Officers, Directors, and Committee Members
Section 2c	Special Group Meetings
	1. Monthly Rock Parties
Section 2d	Social Events
	1. Pizza Supper
	2. Summer Social
	3. Christmas Party
Section 2e	54 <sup>th</sup> Annual Show
Section 2f	32 <sup>nd</sup> Annual Mid-Winter Rock Swap
Section 2g	List of Library contents
Section 2h	Field Trips
	1. Jessieville, Arkansas
	2. Barnes, Kansas
	3. Little Blue River, Nebraska
Section 2i	Website



**Section**

**2a**

## SECTION 2a – OFFERINGS TO MEMBERS OR GUESTS - PROGRAMS

January	Annual Swap	No program due to a full afternoon of swapping and Silent Auction
February	<i>Yellowstone: Imprints of Geologic Time</i>	Technical difficulties precluded viewing of video.
March	<i>River Rock Challenge</i>	Specimen Identification by a panel of “experts”. All members encouraged to participate.
April	<i>Stromatolites</i>	Slide show and commentary by Charles Wooldridge
May	<i>German Agates</i>	By Doug Moore (presentation from MWF Library)
September	<i>China: A Geologist’s Perspective</i>	Slide show and commentary by Dr. Robert Diffendal, Professor Emeritus, University of Nebraska - Lincoln
October	<i>Field Trip to Arkansas</i>	Slide show and commentary by Andrew Tiedje
November	Annual Business Meeting	No program due to elections and a special youth event
December	Annual Christmas Party	Rock Bingo (where everyone wins a prize) in lieu of program

# Meeting Programs 2011

6

Pick & Shovel

## GENERAL MEETING MINUTES—CONT.

needed, but the presenters should have their own computers. See Ed Ridge to request your display case or to let him know how much space you will need for your display.

The Show will be dedicated to the memory of Roger Pabian. Everyone is welcome to attend the Dealers' Breakfast on Sunday morning; we will be sharing Roger stories. See Vera Lyman immediately to reserve your breakfast.

The meeting adjourned to program at 7:59 on a motion by Jim Marburger, second by John Harrison. Carried. Due to equipment malfunction, we were unable to view the presentation.

Respectfully submitted,

*Sharon Marburger*

*Next month's program will be a panel of "experts" trying to identify several specimens provided by President Pete. It should be a fun and interesting endeavor.*

Volume 53, Issue 7: March 2011

4

Pick & Shovel

## PROGRAM:

The program on Stromatolites was presented by Charles Wooldridge. Wooly has first-hand knowledge on the subject as he spent his last vacation at Laguna Bacalar. It was a very nice program. Thanks Wooly!

Volume 53, Issue 9: May 2011

2

Pick & Shovel

## PRESIDENT'S MESSAGE

by Richard Peterson

The program at our general meeting in March was the River Rock Challenge. It was won by Charles "Wooly" Wooldridge, with Ed Ridge taking second in a field of four. Although I am the Program Chair, the evening was more of an entertainment event! Thanks to all the members, and especially to the contestants who participated.



This President's Message is being written just a couple of days before the setup for our 53rd Annual Show. I am looking forward to another great show ... as I am sure it will be. They say that hindsight is 20/20 but, in this case, I will look ahead with clarity and know that you all enjoyed the show. The planning for our 54th Annual Show in 2012 has already begun.

Volume 53, Issue 8: April 2011



Susy McMahan and Charles Wooldridge (left) and Eds Ridge and Dvorak (below) make their best guesses as to the identification of the specimens.



# Meeting Programs 2011

Specimens to be Identified



Can you identify the specimens?

- quartz argillite
- hematite
- basalt
- Echinodermata
- agatized wood
- diorite
- chlorite schist or greenstone
- quartz argillite (looked very different from the first example)
- conglomerate
- bauxite



4

Pick & Shovel

The meeting adjourned to refreshments and program at 7:26 p.m. on a motion by Pat Dvorak, second by Karen Messenger; motion carried. Thanks to Richard Peterson and Sharon Marburger for providing the snacks this month. The program was the award-winning video by Doug Moore called "German Agates". It was an intriguing program showing beautiful agates.



Treasurer Vera Lyman scoring the answer sheets



# Meeting Programs 2011



# PICK & SHOVEL

Lincoln Gem & Mineral Club, Inc.      Lincoln, Nebraska  
[www.lincolngemmineralclub.org](http://www.lincolngemmineralclub.org)

Volume 54, Issue 1  
September 2011

Volume 54, Issue 2  
October 2011

### GENERAL MEETINGS / ACTIVITIES

Regular monthly meetings are held at 7:00 p.m. at the Bethany Park Shelter House on the third Thursday of the month: Sep., Oct., Nov., Feb., Mar., Apr., and May; the second Sunday in December; and the fourth Saturday in January. Youth activities begin at 6:30 p.m. on the same dates. Summer meetings and other activities will be announced as they are planned.

#### 2011 Meeting Dates

<u>Board</u>	<u>General</u>
	Sep 15
Oct 5	Oct 20
Nov 2	Nov 17
Nov 30 (Dec)	Dec 4

#### General Meeting September 15, 2011 7:00 p.m.

**Program: China: A Geologist's Perspective by Dr. Robert Diffendal**



**Monthly Rock Party**  
September 17, 2011  
5:30 p.m.  
Details inside

### GENERAL MEETINGS / ACTIVITIES

Regular monthly meetings are held at 7:00 p.m. at the Bethany Park Shelter House on the third Thursday of the month: Sep., Oct., Nov., Feb., Mar., Apr., and May; the second Sunday in December; and the fourth Saturday in January. Youth activities begin at 6:30 p.m. on the same dates. Summer meetings and other activities will be announced as they are planned.

#### October General Meeting

October 20, 2011  
7:00 p.m.

**Program:** Andrew Tiedje will present a slide presentation and talk of the August field trip to the Jessieville, Arkansas area. Field trip participants are asked to bring some specimens found on the trip.

#### Calendar of 2011 Meeting Dates

<u>Board</u>	<u>General</u>
Nov 2	Nov 17
Nov 30 (Dec)	Dec 4

#### Monthly Rock Party

October 21, 2011  
5:30 p.m.  
Details inside

\*\*\*\*\*  
\* **Show Committee Meeting** \*  
\* October 18, 2011 \*  
\* 6:30 p.m. \*  
\* Lyman Residence \*  
\*\*\*\*\*

#### Mineral Monkeys

October 20, 2011  
6:00 p.m.  
Activity: Basic lesson in rocks and minerals (for scouts to earn Geology badge and Monkeys to earn FRA badge).

### SEPTEMBER PROGRAM

The program for September will be presented by Dr. Robert Diffendal, Research Geologist and Professor Emeritus with the University of Nebraska Conservation and Survey Division. Dr. Diffendal has visited China numerous times since 1979. The program is entitled, "China ... a geologists perspective".

The program was given by Andrew Tiedje, "Field Trip to Arkansas". Andrew prepared a slide show of the trip and talked about all the fun and excitement that was had by the attendees. This was Andrew's first attempt at giving a program and, with tidbits tossed in by other field trip participants, he provided an entertaining program.

# Meeting Programs 2011



Volume 54, Issue 3  
November 2011

## GENERAL MEETINGS / ACTIVITIES

Regular monthly meetings are held at 7:00 p.m. at the Bethany Park Shelter House on the third Thursday of the month: Sep., Oct., Nov., Feb., Mar., Apr., and May; the second Sunday in December; and the fourth Saturday in January. Youth activities begin at 6:30 p.m. on the same dates. Summer meetings and other activities will be announced as they are planned.

### Calendar of 2011 Meeting Dates

<u>Board</u>	<u>General</u>
	Nov 17
Nov 30 (Dec)	Dec 4

### Monthly Rock Party

November 13, 2011  
5:00 p.m.  
Details on page 8

### November General Meeting

November 17, 2011  
7:00 p.m.

**Program:** No program planned due to special youth event and elections.

### Mineral Monkeys

November 17, 2011  
6:00 p.m.

Activity: Basic lesson in rocks and minerals (for scouts to earn Geology badge and Monkeys to earn FRA badge).



Volume 54, Issue 4  
December 2011

### December General Meeting

Christmas Party  
December 4, 2011  
5:00 p.m.

Potluck Supper - Club will furnish fried chicken and beverages. Members bring two side dishes (hot & cold)  
Rock Bingo  
Gift Exchange  
See details in Minutes on p. 4.

**Section**

**2b**

**SECTION 2b – OFFERINGS TO MEMBERS OR GUESTS - OFFICERS, DIRECTORS,  
AND COMMITTEE CHAIRMEN**

President	Richard Peterson
1st Vice-President	Aulden Stewart
2nd Vice-President	Ed Dvorak
Treasurer	Vera Lyman
Secretary	Sharon Marburger
Board Member	Robert Cropp
Board Member	Jim Marburger
Board Member	Ed Ridge
Board Member	Charles Wooldridge
Audit Committee	John Harrison, James Marburger, Ed Dvorak
Christmas Party	Edward Ridge
Education / Librarian	Charles Wooldridge, Judy Cropp
Facebook	Andrew Tiedje
Field Trips	James Marburger
Geology Day Coordinator	Aulden Stewart
Grinding Party	Aulden Stewart
Historian	Sharon Marburger
Legislative Liaison	Richard Peterson, Andrew Tiedje, Robert Cropp
Long Range Planning & By-Laws Committee	Edward Ridge, Robert Cropp, Charles Wooldridge, Sharon Marburger, Vera Lyman, John Harrison
Membership Record	Edward Ridge
MWF Liaison	Vera Lyman
Nominating Committee	Charles Wooldridge, Brad Nielsen, Roger Pittard, Robert Cropp, Judy Cropp, Edward Ridge, Vera Lyman
Programs	Richard Peterson
Property	James Marburger
Refreshments / Door Prizes	Mary Pittard
Scholarship	Vera Lyman
Show—2011	Ed Dvorak
Swap—2011	Richard Peterson
Website	Jim Atkins
Youth Activities	Stella Thiessen, Andrew Tiedje, Kay Jurgens



# Section

## 2c

# Rock Parties

Each month, LGMC members gather at the home or business of a host member to share in the love of the hobby. Lessons have been provided for cabochon cutting, faceting, silver smithing, wire wrapping, fossil preparation, and mineral identification, just to name a few. Participants also hold brainstorming sessions on a variety of subjects, including the Mid-Winter Swap, Annual Show, various outreach activities, and youth activities. Cataloging and organizing the library, as well as slide review and digitalization, are other massive projects tackled during these parties.

Anyone is welcome to host a monthly party, and it is purely voluntary. The fun begins with a potluck supper, then everyone splits off to work on their project of the evening. There is a lot of fun and laughter that accompany these gatherings.

## Hobby Fun

Would you like to have some hobby fun? Consider hosting a monthly Rock Party. It doesn't matter where you hold it. All you have to do is set the date and time, provide place settings for the potluck, and have areas to work in and chairs or floor to sit on. Let a Board Member know if you are interested in hosting.

# Rock Parties

## January 29, 2011



Volume 53, Issue 5: January 2011

### JANUARY ROCK PARTY

Join the Marburgers at their Hickman home for this month's Rock Party on Saturday, January 29. The fun begins at 5:00 p.m. and continues until the last person leaves.

Soup and/or chili will be provided by the hosts. Bring along a favorite dish and your appetite for good eatin' before the hobby fun begins.

Remember to bring your portable equipment and projects. See you at 334 Locust. Telephone, e-mail or Google maps for directions.

### JANUARY ROCK PARTY - BITTERSWEET

by Sharon Marburger

The January Rock Party was held at the Marburgers' home in Hickman on January 29th. Despite the weather, a steadfast crew of Brian, Jayne & Corey Beer; Ed Dvorak; Richard "Pete" Peterson; Andrew Tiedje; and Charles "Wooly" Wooldridge joined Jim and Sharon for good food and fun times.

A nice complement of food was had. There was homemade turkey vegetable soup, potato bacon soup, and sweet potato bacon soup; homemade chicken pot pie that was out-of-this-world (which Chika the cat thought was *very* interesting); cornbread, French bread, potato chips, and scooper chips to accompany the soup; and a yummy strawberry-rhubarb pie, sticky buns, and a very rich chocolate cream pie for dessert.



Ed and Andrew migrated to the kitchen to try their hands on wire wrapping tumbled stones.



Jayne and Pete enjoy a quip from Corey.

Continued on page 10.

Volume 53, Issue 6: February 2011



### ROCK PARTY

*Continued from page 9.*

Pete had to make a decision about which of the many pewter offerings he would need for his project.



Wooly brought his laptop and a bunch of CDs from Roger Pabian's estate. The group viewed the CDs to determine if any of the files could be made into club programs, or if any of the pictures could be passed on to Susy McMahan for incorporation into the memorial program being made in Roger's honor.



And, of course, Chika the cat had to be in the middle of everything. "Whatcha doin', Wooly?"



It was a nostalgic and bittersweet evening, full of smiles, laughter, and a few "tears".





## Rock Parties February 19, 2011

Pick & Shovel

Volume 53, Issue 6: February 2011



2

10

Pick & Shovel

Volume 53, Issue 7: March 2011

# February Rock Party

*Saturday*

*February 19*

*6:00 p.m.*

*6115 Huntington*

Bring a dish for the potluck supper.

Remember your projects!

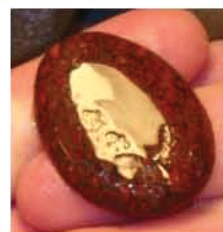
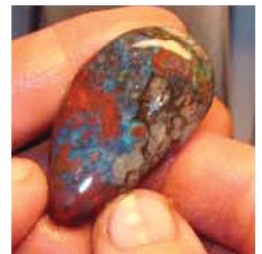


2

Pick & Shovel

## FEBRUARY ROCK PARTY

See report in this month's President's Message.



## PRESIDENT'S MESSAGE

by Richard Peterson

The Rock Party at Wooly's was, as usual, an enthusiastic gathering. Howell Pabian, Roger's brother, was a welcomed guest. Jim Null, LGMC member and President of the Nebraska Mineral & Gem Club in Omaha, was also in attendance. Some people brought their own equipment; others used Wooly's to work on new or ongoing lapidary projects. Sharon worked on cataloging the club library while Susy and other worked on collecting "gem dig" material for future club activities.

Photos courtesy of Sharon Marburger.

Volume 53, Issue 7: March 2011



## Rock Parties March 20, 2011



2

Pick & Shovel

Volume 53, Issue 7: March 2011

# March Rock Party

Sunday  
March 20  
6:00 p.m.

*The Jewelry Connection*  
13th & Arapahoe

Bring a dish for the potluck supper.  
The main dish provided will be  
corned beef & cabbage.  
Remember your projects!



Everyone is Irish on  
St. Patty's Day!

10

Pick & Shovel

### MARCH ROCK PARTY

by Jayne Beer

The March Rock Party was held March 20 at The Jewelry Connection with Judith Bay and Jayne Beer as hosts. Present were Judith Bay; Jayne, Brian, and Corey Beer; Al Stewart; Richard Peterson; Charles Woodridge; Judy and Rowdy Cropp; Linda Guenter; Susy McMahan; Andrew Tiedje; and Jim Null.

First we ate - Brian and I made a large roaster full of corned beef, potatoes, carrots, and cabbage. Brian tried his hand at pecan pie, using his mom's old recipe that she has been making forever. He made two of them and they were almost all gone. I think everyone loved them.

We then had a meeting for the Roger Memorial. It was decided that we would get the chicken from Super Saver, a suggestion from Vera, since that is where she gets the chicken for the Christmas party. Richard said he would be happy to bring the club projector. Everyone chose a food to bring to the memorial. The meeting was adjourned and a few people left, then the rest of us started on some projects. Mostly we talked and relaxed and enjoyed each others' company. Andrew shared several great ideas that he has for the club's future. I love his enthusiasm. I cannot remember what time we finished up, but I very much enjoyed having everyone down at The Jewelry Connection for the evening.

Mark your calendars! The April Rock Party will be hosted by Steve May in Hickman on April 16!





# Rock Parties April 16, 2011

8

Pick & Shovel

## April



The April Rock Party was held at Hickman, Nebraska, in the shop of Steve May. Steve and his wife, Carolyn, provided a scrumptious main course for the potluck, and great accompaniments were brought in by the attendees.



Photos courtesy of Jim & Sharon Marburger

Those in attendance, in addition to our hosts, were Richard "Pete" Peterson, Al Stewart, Judy & Robert "Rowdy" Cropp, Jim & Sharon Marburger, Vera Lyman, Ed Dvorak, Ed Ridge, Richard Lieb, and Susy McMahan. Brian, Jayne and Corey Beer arrived after most of the others had left.

Prior to delving into the hobby crafts, the group held a brainstorming session on how to make the show better. Lots of good ideas were shared.

Ed Dvorak and Al Stewart worked on wire wrapping for awhile; Vera Lyman and Sharon Marburger developed a database of the library contents; Susy McMahan and Al Stewart looked over a box full of dopped stones; Pete wandered around and dabbled in everything, and everyone else worked cabochons.

Rowdy was working on a nice stone when it broke. No swearing was heard, but the agony was felt across the room.





We had such a great time in April, we thought we'd do it again!



**ROCK PARTY**  
**Saturday, May 21 at 6:00 p.m.**  
**Steve May residence**  
**16300 Hickman Ridge Rd.**

Our host will provide grilled hamburgers and cheeseburgers. Bring your hot and/or cold dishes to accompany this fare. There is always good food at our events so bring your appetites, too! Remember your hobby projects! We plan to have a fun-filled and educational evening!

**Rock Parties**  
**May 21, 2011**

2

Pick & Shovel

Volume 53, Issue 9: May 2011

Pick & Shovel

5

**MAY AT MAYS': ROCK PARTY!**

The May Rock Party proceeded as planned although Jim and I could not attend. I understand from host Steve May that it was a fun evening - as usual! Dick Lieb's comment was, "Had fun." Andrew Tiedje also indicated having a pleasant evening.

by Steve May

We had a good time and ate well. Those present were Dick Lieb; Andrew Tiedje; Al Stewart; Ed Ridge; Jayne, Brian and Cory Beer; Linda Guenter and me. We had hamburgers/cheeseburgers, Cheetos, and a couple choices of potato salad. For dessert we had cookies, carrot cake, and angel food cake.

Everyone had a project to work on but I didn't get to see most of them. I know everyone was busy because one of the pictures Dick took was a "back shot" of every one lined up in front of all the machines (and I added one more to the line since the last meeting). I recently cleaned up a couple of the machines so the "splash guards" were not on them. We had water everywhere but no one seemed to mind. Also, Cory showed us some of his recent "parking lot" finds.

Al carried a lot of the conversation with stories of his military days. We mostly just got to know each other a little better.



Photos courtesy of Dick Lieb.





Rock Parties  
June 25, 2011

Pick & Shovel

3

# June Rock Party

Saturday, June 25 at 2:00 p.m.  
Eating at 4:30 p.m.  
Roger & Mary Pittard's home  
1013 Road K  
Geneva, Nebraska

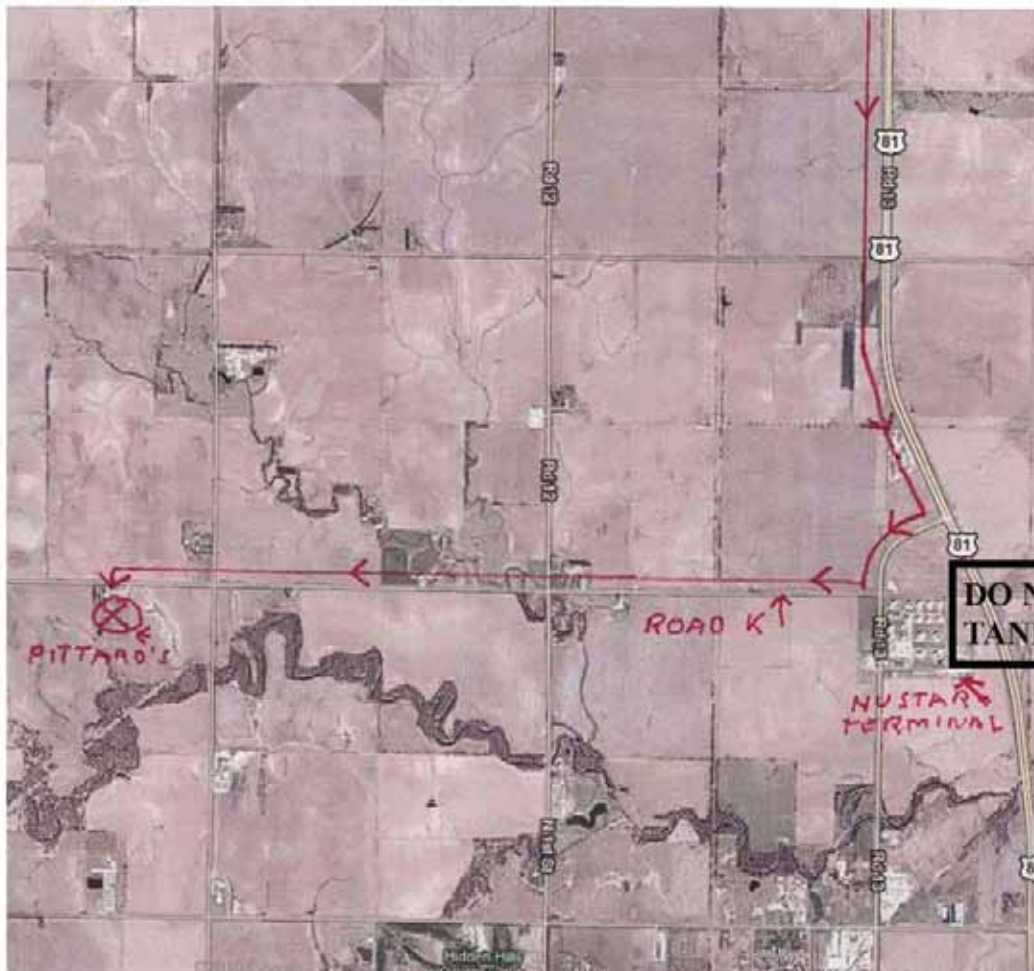
Roger and Mary will provide grilled hot dogs & buns, coffee, tea, and "country water". You will provide:

- ◆ Your hot and/or cold dishes to accompany this fare;
- ◆ Your lawn chair to sit in;
- ◆ Your portable equipment and project; and

- ◆ Your voice! (Roger tells us there will be singing in the evening.)
- If we have a quorum, we will also have a brief meeting to discuss upcoming events.

## DIRECTIONS

- > I-80 West to Exit 353 at York (approx. 40 miles)
- > From Exit 353, turn left (south) on US-81 toward Geneva (19+ miles)
- > Take the Thirteenth Street exit (the first of four exits for Geneva), turn right, around a slight curve (¼ mile)
- > Turn right (West) at gravel road (Road K), (this is on the north side of the Nu Star Pipeline Terminal) (go 2-1/3 miles)
- > Turn Left into Pittard's driveway.





# Rock Parties

## June 25, 2011

Pick & Shovel

7

### PITTARDS' JUNE ROCK PARTY

Roger and Mary Pittard hosted the June Rock Party at their home on June 25th. There was lots of food, rock grinding, horseshoes, singing and gee-tar playing, and best of all, rockhunting in Roger's dump area. It really is true that one man's junk is another man's treasure. Roger also gave a tour of his outbuildings that contain his rock specimens. He made many of us drool over some of his finds.



Jim and I arrived a little late, having attended Jim's mother's funeral that morning. When we got there, several people were playing horseshoes while others sat around watching and visiting. It was a beautiful afternoon following a morning of rain.



We had brats and hot dogs, assorted salads, and even stuffed comlillies. Flowers? You betcha! They were mighty tasty!

While some went back out to play horseshoes, others took up position behind Genies and worked on stones.



The highlight of the party was when Roger's trio got together to sing and play. It was an awesome afternoon. I can't wait for the next rock party!

Photos courtesy of Jim & Sharon Marburger





Rock Parties  
August 7, 2011



# ROCK PARTY

Woolly's  
Home

Sunday, August 7, 2011

5:00 p.m.



**6115 Huntington**

**Bring your projects to work on while we discuss the details of the Arkansas field trip. As always, bring a dish to pass. Woolly will provide the grill and hot dogs (and maybe even a pie!).**

2

Pick & Shovel  
Volume 53, Issue 12: August 2011



Pictures not published in Pick & Shovel.

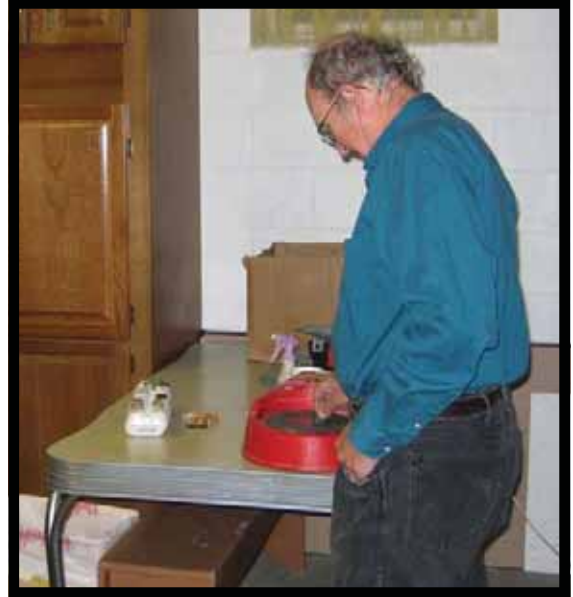
Rock Parties  
September 17, 2011

# Rock Party

September 17, 2011  
5:30 p.m.

at the Lymans  
420 N. 56th  
Bring a dish to pass.

**\*\*Bring your equipment  
as none will be available.\*\***





# Rock Parties

## September 17, 2011

### SEPTEMBER ROCK PARTY

by Rowdy Cropp

Photos taken by Vera Lyman, Rowdy Cropp, Judy Cropp, and whoever else got hold of the camera!

We had a great time at the grinding party at Vera and Glenn Lyman's house. There was some awesome food had by all and I think everyone had MORE than enough to eat. There was a LOT of equipment brought over and some very nice stones were polished.

Those in attendance were Jayne, Bryan and Corey Beer, as well as Jayne's sister; Andrew Tiedje; Wooly; Richard Peterson; Rowdy and Judy Cropp; Vera and Glenn Lyman; Ed Ridge; and, I apologize, I'm sure I am missing someone.

Glenn gave a tour of his Lapidary Room to the people who had not seen it before. He showed off his BEAUTIFUL specimens of cabochons and faceted stones.

And, of course, one of the best things was a Husker win! Thanks to Vera and Glenn for opening their house to us, and hopefully we can do it again sometime!



President Richard Peterson, Andrew Tiedje, Corey Beer (hiding behind the cup), and Charles Wooldridge working on their projects.



Some nice cabochons.



Rowdy Cropp and Vera Lyman



Y  
U  
M  
M  
Y  
!



Jayne's sister, Jayne Beer and Vera Lyman chatting it up.



This picture says it all.





# Rock Parties

## October 21, 2011

Pick & Shovel 5

M  
O  
N  
D  
A  
Y  
R  
O  
C  
K  
P  
A  
R  
T  
Y

Hosted by  
**Greg & Annette Ford** 🍁

# October 21, 2011

2000 W. Denton Rd. (1 block west of the W. Denton & S. Coddington Rds. intersection on the north side. Look for the huge white corral and Rock Party banners.)

Our hosts have no equipment; bring your own.

After eating, we will head for the garages to work on projects. Dress according to the weather as it could be chilly.

This is a true "pot luck". We have no food theme, so let's have a nice variety of edibles!

## See you all at 5:30 p.m.!

Volume 54, Issue 2: October 2011

Pick & Shovel

5

Volume 54, Issue 2: October 2011



## OCTOBER ROCK PARTY

by Sharon Marburger

The October Rock Party was hosted by Greg & Annette Ford and held at the offices of Ford & Ford Auctioneers on the 21st. It appeared that we were all on the same wavelength as there were five different kinds of chili, and an assortment of sides to go with them. As is usual at these events, no one went hungry!



The day had been clear and beautiful, with temps hovering around 70°. It was commented by several people that the day must have been on its best behavior because there was no wind, and the wind "always" blows at that location.

After eating, equipment was brought into the garages. A few of the menfolk gathered around Mark Awakuni-Swetland's equipment, poking and prodding at it



(as men will do). However, having been a long day with most of us using our energy at our respective



employers, we were all happy to just sit around and visit. Hobby techniques, field trips, and ways to improve our club experience were just a few of the topics discussed.

It was a very nice and relaxing evening. We thank the Fords for allowing us to spend it with them.



10

Pick & Shovel

Volume 54, Issue 3: November 2011

**Rock Parties**  
**November 13, 2011**

8

Pick & Shovel

\*\*\*\*\*



**NEW DATE!**  
**NEW TIME!**  
**NEW LOCATION!**

\*\*\*\*\*



**November Rock Party**  
**Hosted by Howell Pabian**

**Sunday, November 13, 2011**

**5:00 p.m.**

**Roger Pabian's House**  
**5301 X Street, Lincoln**

**This month's potluck theme is**  
**"Soups and Sides".**

**A couple of different soups will be provided.**

**Note of Interest:**  
**The November 2010 Rock Party**  
**was hosted by Roger Pabian.**  
**It was his final club event.**

**Bring your**  
**projects and**  
**equipment.**



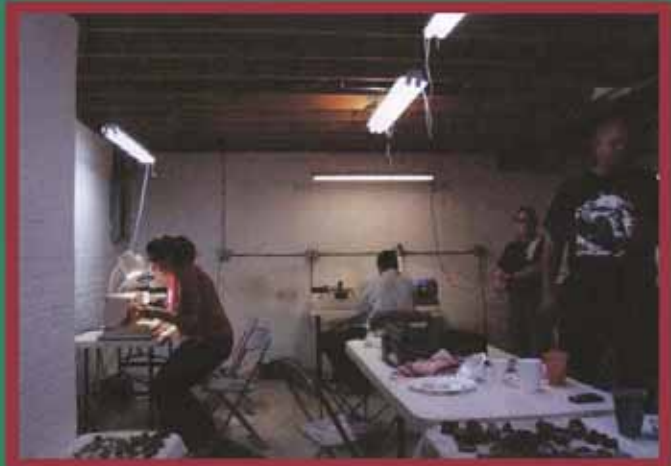


# Rock Parties November 13, 2011

## NOVEMBER ROCK PARTY

by Sharon Marburger

The November Rock Party was hosted by Howell Pabian and held at the residence of the late Roger Pabian. I did not have the opportunity to attend this event, so I cannot report on it. However, Ed Ridge supplied pictures, so I will let them tell the story.




Photos courtesy of  
Ed Ridge





**Rock Parties**  
**December 10, 2011**



**Rock Party**  
**December 10, 2011**  
**5:00 p.m.**  
**at the Marburgers**  
**334 Locust, Hickman**  
**Hosts providing**  
**ham, coffee, & tea**  
*Bring your projects and portable equipment.*  
*We will also review slides from the estate*  
*of Roger Pabian to determine if any would*  
*be useful to create new programs.*



2

Pick & Shovel

Volume 54, Issue 4: December 2011

**DECEMBER ROCK PARTY**

by Sharon Marburger

The December Rock Party was hosted by the Marburgers in their Hickman home on December 10, 2011. In addition to the hosts, nine members attended. As usual, a variety of tasty food abounded. Once everyone filled their tummies to bursting, they retired to the living room where Wooly was set up to show slides from the late Roger Pabian's estate. About 500 slides were viewed to determine if any could be converted to digital photos and programs be made. The slides were interesting and some showed quite beautiful agates. (I know, who would have guessed Roger would own photos of agates!) I did not hear what was decided about converting the slides.

Thanks to Brian, Jayne, & Corey Beer; Ed and Pat Dvorak; Susy McMahan; Ed Ridge, Andrew Tiedje, and Wooly for sharing their evening with us. Let's do it again sometime!

# Section

## 2d

Pizza Supper  
January 22, 2011

No pictures available.



July Social  
July 10, 2011

2

Pick & Shovel

picnic in the park  
at  
pioneers park  
Sunday, July 10  
immediately following the  
annual Grinding Party  
Bring your basket  
of goodies and  
Join in the fun!



Volume 53, Issue 11: July 2011



Sharon Marburger gets the grill started, although the weather was hot enough to cook without the grill!



Jayne Beer is a good cooker



It's HOT!



Let's eat!



# Christmas Party December 4, 2011

2

Pick & Shovel

## PRESIDENT'S MESSAGE

by Richard Peterson

Another year is almost over, which only confirms that time does fly when you're enjoying the hobby you love.



Our December meeting is a time to celebrate the season. Your club will provide the chicken, we ask that you bring two sides (and your appetite) and be ready to win some nice ROCK BINGO prizes. We'll need your help with the prizes, so bring some nice items to donate. See you there.

Don't forget, we have our 33rd Annual Rock Swap & Sale coming up in January. Let's all chip in and make our mid-winter club event a success.

Merry Christmas and Happy Holidays!



Volume 54, Issue 4: December 2011





# Christmas Party December 4, 2011



Santa Wooly contributes to the prize selections and checks out the other offerings



Bill Rockel helps with cleanup



Roger Pittard tries to decide which of the multitude of prizes to select



Brad Nielsen listens intently to Shirley Rockel's story. In the background, Judy Cropp is amused at one of the Rock Bingo prize offerings.



Mineral Monkeys having fun

# Section

## 2e



# 53rd Annual Gem & Mineral Show

## April 2 & 3, 2011

**Lincoln Gem & Mineral Club**  
**53rd Annual Gem & Mineral Show**  
**April 2 & 3, 2011**

Lancaster Event Center  
 84th & Havelock Ave.  
 (4100 N. 84th St.)  
 Lincoln, Nebraska 68507



**2011**



2011 Show: April 2 & 3  
 2012 Show: April 7 & 8

www.lincolngemmineralclub.org

2x3 business card  
 Placed at various local & regional businesses and handed out by members & friends

Lincoln Gem and Mineral Club's  
 53rd Annual Gem and Mineral Show

**"Wonders of the Earth"**

held in conjunction with the  
 Nebraska Association of Earth Sciences Clubs' Annual Show

April 2 & 3, 2011

**Saturday, April 2**      **Lancaster Event Center**      **Sunday, April 3**  
 9:00 - 6:00      84th and Havelock      10:00 - 5:00  
 Lincoln, Nebraska

Featuring Dealers, Gemstones, Minerals, Agates, Fossils, Jasper, Petrified Wood, Jewelry, Beads, Gem and Jewelry Making Equipment and Supplies, Demonstrations, Educational Programs, Rough and Uncut Gems, Children's Activities, and much more.

*Fun for the whole family!*

Admission: \$5 per adult, children 11 and under free with paid adult, \$9 for a 2 day pass. Bring this coupon for \$1 off admission for each adult in party.

**Free Parking!**

Show Flyer 4x6 Postcard  
 Mailed to previous attendees and placed at various local & regional businesses

Lincoln Journal Star  
**PRIME TIME**  
 Tuesday, March 22, 2011

**April 2-3 — Lincoln Gem and Mineral Club's 53rd annual Gem & Mineral Show**, Lancaster Event Center, 84th and Havelock. April 2, 9 a.m.-6 p.m.; April 3, 10 a.m.-5 p.m. Adults, \$5; children 11 and under, free with responsible adult. Bring canned food item for Lincoln Food Bank and get \$1 off admission. No advance ticket sales. Held in conjunction with Nebraska Association of Earth Sciences Clubs' annual show, "Wonders of the Earth." Displays of rocks, gemstones, fossils, minerals; dealers with hobby-related items for sale; demonstrations of hobby-related activities; youth activities; educational programs. More information: [Lincolngemmineralclub.org](http://Lincolngemmineralclub.org) or call Ed Dvorak at 402-946-3041 or e-mail Dvorak at [ed20649@windstream.net](mailto:ed20649@windstream.net).

*Prime Time* is a quarterly publication for older adults

Lincoln Gem & Mineral Club, Inc.  
 PO Box 5342  
 Lincoln, NE 68505-0342

Bring this coupon, newspaper ad, or canned good for the Food Bank and receive

**\$1 OFF**

ALL ADULT ADMISSIONS TO THE SHOW!

Lancaster Event Center  
 84th and Havelock Avenue  
 Lincoln, Nebraska

Over 4000 FREE Parking Spaces

April 2nd & 3rd, 2011  
 Saturday 9am - 6pm  
 Sunday 10am - 5pm







# 53rd Annual Gem & Mineral Show April 2 & 3, 2011

## Special Feature—Amber



### AMBER

Amber is fossilized tree resin. High pressures and temperatures from overlying sediment over years transforms the liquid tree resin into amber.

It does not exhibit crystalline structure and is an amorphous solid gemstone.

Because it originates as a soft, sticky tree resin, amber sometimes contains animal and plant material.

Pieces of amber can be found washed up on beaches, embedded in shales or sandstones and can be collected by hand, diving or dredging.

Fossil resins from Europe fall into two categories, Baltic amber, or succinite, comes from the Baltic region and is the home of about 80% of the world's known amber. It is used extensively as gemstone. Agathis group, primarily used for the production of varnishes, adhesives, food glazing agents, incense and perfume.

Amber ranges from a whitish color through a pale lemon yellow, to brown and almost black as well as the usual yellow-orange-brown that is associated with the color "amber". More uncommon colors include red amber, green amber, and even blue amber which is rare and highly sought after.

Appreciated for its color and natural organic beauty, amber from the Baltic Sea has been extensively traded since antiquity and is sought after as gemstone.

### AMBER

The Baltic Latvian term for amber is *Dzintars* and Lithuanian is *Gintaras*.

Since Latvia is on the Baltic Sea where amber can be found washed out on the shore, amber is extremely popular. Many ethnic jewelry pieces incorporate amber within the silver designs worn with folk costumes as well as with contemporary dress.

The traditional design elements are easily recognized even in their various interpretations:

The Sun design is one of the most popular designs for jewelry and in many other applications.

### AMBER

Amber is a popular gemstone and is available in contemporary designs in many fine jewelry and gift stores. Its place in culture and tradition lends it tourism value.

It is very light in weight, which allows it to be used in large jewelry pieces without discomfort.

Reconstructed amber has been used to manufacture, cigarette mouthpieces, pipes and other smoking tools.

### AMBER

#### Categories of Baltic amber

*Natural Baltic amber*—has undergone mechanical treatment only (grinding, cutting, turning or polishing) without any change to its natural properties

*Modified Baltic amber*—subjected only to thermal or high-pressure treatment, which changed its physical properties, including the degree of transparency and color, or shaped under similar conditions out of one nugget, previously cut to the required size.

*Reconstructed (pressed) Baltic amber*—gemstone made of Baltic amber pieces pressed in high temperature and under high pressure without additional components.

*Bonded Baltic amber*—gemstone consisting of two or more parts of natural, modified or reconstructed Baltic amber bonded together with the use of the smallest possible amount of a colorless binding agent necessary to join the pieces.

Amber sometimes contains animals or plant matter that became caught in the resin as it was secreted. Insects, spiders, marine microfossils, wood, flowers and fruit, and other small organisms have been recovered in ambers dating to 130 million years ago.

Baltic amber includes the most species-rich fossil insect fauna discovered to date. These frequent fossil inclusions were made famous in the movie "Jurassic Park". The odd inclusions that are often seen in amber usually add to amber's unique look and in many cases greatly increase its value.



# 53rd Annual Gem & Mineral Show April 2 & 3, 2011

Photos courtesy of Jim Atkins



Rowdy Cropp shows off his polished slabs and the award received from *Rock & Gem* magazine for his article on silver smithing and stone working



Greg Syslo demonstrates grinding and polishing stones



One fossil for sale by a vendor



Beads galore!



Petrified wood for sale by a vendor



Spheres on display



53rd Annual Gem & Mineral Show  
April 2 & 3, 2011



Julie Whitlatch demonstrates  
how to make glass beads

Dichroic glass pieces



Picture jasper tiles

53rd Annual Gem & Mineral Show

April 2 & 3, 2011



53<sup>rd</sup> Annual

Lincoln Gem & Mineral Show  
April 2-3, 2011

HOST



LINCOLN  
GEM &  
MINERAL  
CLUB



LINCOLN  
NEBRASKA

SHOW  
COMMITTEE



LINCOLN  
GEM &  
MINERAL  
CLUB



LINCOLN  
NEBRASKA

Exhibitor



LINCOLN  
GEM &  
MINERAL  
CLUB



LINCOLN  
NEBRASKA



# 53rd Annual Gem & Mineral Show

## April 2 & 3, 2011

8

Pick & Shovel



Show photos courtesy of Jim Atkins



### 2011 POST-SHOW MINI-REPORT

by Roger Pittard

Overall, I felt the show went VERY well although the attendance definitely could have been better! The weather was about perfect which was probably the main reason for the short numbers. However, as Floor Chairman, I was pleased with the way it all fell into place, with no major problems.

I was surprised at the popularity of the fluorescent display; it was very busy throughout most of the show. Some of the younger crowd were back two or three times and they seemed to enjoy it.

We had a good, diverse selection of dealers and, although I didn't quiz any of them, I didn't hear any complaints. [Editor's Note: The Dealer Chairman told me the dealers were all satisfied with the show, considering the poor economy these days.] The displays were very good, and the amber exhibit drew several nice comments.

Two of my great-granddaughters visited, with their parents in tow, from San Antonio, Texas, and they really enjoyed their time spent at the junior booth, digging for gems, racing rocks, and spinning the "Wheel of Rock Fortune".



Photo and caption courtesy of Jayne Beer

Charles "Wooly" Wooldridge and Jim Null sing "Happy Trails to You" at the close of the 2011 Gem and Mineral Show. They did a great job and I am so glad that they kept this tradition alive!! A fitting close to the show dedicated to Roger Pabian. Happy Trails Roger!!!



53rd Annual Gem & Mineral Show  
April 2 & 3, 2011

J. J. & L. Rocks & Minerals

330 Locust St., P.O. Box 68  
Hickman, NE 68372-0068

April 28, 2011

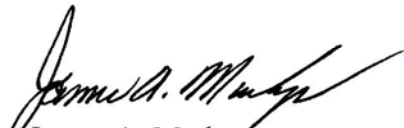
Dealer Chairman,  
Lincoln Gem and Mineral Club  
Box 5342  
Lincoln, NE 68505

Dear John,

We would like to thank you for a wonderful and exciting show again. We appreciate the hard work you and your club goes to, to provide a quality show in your area. Please consider us for one of your fine dealers at the next show. As always we will continue to upgrade and expand our lines so a more complete and exciting dealer booth can be provided for your show attendance and club.

Please continue the good work. If there is any thing that we can do to help improve our shop or items that are needed to fill any holes in the presentation of the hobby please advise us so we can provide the added service.

Thanks again and hope to see you next year at your show.



James A. Marburger

53rd Annual Gem & Mineral Show  
April 2 & 3, 2011



*The mission of the Food Bank of Lincoln is to alleviate hunger in southeast Nebraska.*

Lizabeth Kuhlman  
President

T.J. McDowell, Jr.  
Vice President

Jim Lamphere  
Secretary

Sue Staehr  
Treasurer

Connie Hilligoss  
At Large Member

Alex Shada  
At Large Member

Brad Philson  
Past President

Zainab Al-Baaj  
Jolene Bartling  
Beatty Brasch  
Molly Brummond  
Nancy Ganser  
Linda Robinson Rutz  
Mike Tavlin  
Greg Yank

Scott Young  
Executive Director

Nancy Evans  
Assistant Executive Director

Bruce Robertson  
Distribution Center Manager



A United Way Community Partner

4840 Doris Bair Circle, Suite A  
Lincoln, NE 68504  
Tel 402.466.8170  
Fax 402.466.6124  
www.lincolnfoodbank.org

06/21/11

Lincoln Gem and Mineral Club  
Jim Marburger  
PO Box 5342  
Lincoln NE 68505-0342

Dear Friends of the Food Bank:

Thanks so much for your gift of 58 lbs. of food to the Food Bank of Lincoln. We had a record-setting year in 2010, distributing over 8 million pounds of food and grocery products to our agencies and low-income people in our 16 county service area. Our Backpack Program is delivering over 2,668 food-filled backpacks on Friday afternoons in 17 communities. Our SNAP (Food Stamp) Outreach program that began in July is growing. Our Mobile Pantry operations are booming.

The challenges of 2011 will be great, but together we can meet and exceed those challenges. With your help, we will continue to be the best we can be when our best is needed.

Thanks for your friendship and support. We promise to put your generosity to good use.

Best regards,

A handwritten signature in black ink, appearing to read "Scott Young".

Scott Young  
Food Bank of Lincoln

\*The Food Bank of Lincoln is recognized by the IRS as a 501 (c) 3 organization, and is exempt from federal and state income tax, and currently is in good standing as such. The Food Bank of Lincoln Tax Identification Number is 47-0640293. No goods or services were provided to the donor in consideration of this gift.

# 53rd Annual Gem & Mineral Show

## April 2 & 3, 2011

Food Bank of Lincoln  
 4840 Doris Bair Circle  
 Suite A  
 Lincoln, NE 68504

### DONATION RECEIPT

Donation Order Number: DI-41566

Donation Order Date: 04/04/11

Page: 1

To: Lincoln Gem & Mineral Club  
 P.O. Box 5342  
 Lincoln, NE 68505

Ship  
 To: Food Bank of Lincoln  
 4840 Doris Bair Circle  
 Suite A  
 Lincoln, NE 68504

Ship Via  
 Receive By 04/12/11  
 Terms

Confirm To  
 Phone No. 402-466-8170  
 Vendor ID D-3459

Food Bank of Lincoln, a private, non-profit, 501(c)(3) tax exempt organization, solicits surplus food and non-food products that are distributed to private, non-profit organizations engaged in the feeding of people in need. Your donations are accepted with the following conditions:

- 1) Your donated items will not be sold, transferred or bartered for money, other products or services.
- 2) Your donated items will be used only in a manner related to the exempt purpose of the recipient organizations. This complies with the provision of clauses (i) and (ii) of Section 170(e)(3) of the Tax Reform Act of 1976.
- 3) Your donated items will be distributed only to organizations who have signed an agreement limiting liability of corporate donors.
- 4) Your donated products will be used as soon as possible to provide greatest palatability and freshness.
- 5) We appreciate that your donation is entirely a gift. No part of the contribution was used to purchase goods from the Food Bank of Lincoln.

Copies of agreements are on file at our office and may be inspected with reasonable notice during normal business hours.

Item No.	Description	UOM	Weight	Quantity	Extended Weight
02-0000	MISC. GROCERIES	Pound		1	58.00

**Total Extended Weight 58.00**



# A gem of a show

Mineral and gem enthusiasts gather at event center.

By MITCH SMITH  
Lincoln Journal Star

Makenzie Thiessen loves rocks. She has ever since she got some stones for Christmas a couple of years ago.

And in a bag filled with turquoise and moss agate at Sunday's Lincoln Gem & Mineral Show, the 10-year-old's favorite specimen was the bismuth she dug up at the children's booth. It's both rough and sparkly, she said.

Makenzie was among about 1,000 rock collectors who stopped by the Lancaster Event

Center on Saturday and Sunday for the Lincoln Gem & Mineral Club's 53rd annual show. Makenzie, who is a member of the club's youth organization, paid 50 cents for the bag of minerals containing her treasured bismuth.

Mary Weber also became a rock fanatic at a young age. That was decades ago, when her father owned a gravel company, and she'd search for unique stones at his work sites.

Decked out in neon green traffic vests emblazoned with the North Central Kansas Rock and Gem Club logo, Mary and her husband, Martin, spent Sunday displaying fossils and talking with dealers. The pair drove

**See ROCKS, Page B2**

## ■ Rocks

Continued from B1

from Washington County, Kan., to check out the rocks.

Martin, who is the president and founder of his Kansas club, said he enjoyed his first trip to the Lincoln show.

"It's not oversized, it's

not undersized," he said.

A few booths from where Makenzie paid two quarters for her rocks, Greg Ford of Lincoln wooed potential buyers to his booth with a \$3,500 geode from Madagascar and a \$1,100 specimen of Russian quartz. Ford said the Lincoln event is often his most profitable, and he and his wife find their

success by displaying hard-to-find items from almost every continent.

Pat Akins, another Lincoln-based vendor, displayed several specimens of petrified wood at his booth. Petrified wood, Akins said, is wood that turns to stone over the course of millions of years but maintains the surface look of a tree.

He hoped the show would encourage young people to turn to rock hunting instead of gadgets.

"I'm old-fashioned," he said, "and I think this is a heck of a lot more fun than electronic games or 10,000 apps on your phone."

Reach Mitch Smith at  
402-473-2655 or  
msmith@journalstar.com.

# Section

## 2f



# Mid-Winter Rock Swap January 22, 2011



## PICK & SHOVEL

Lincoln Gem & Mineral Club, Inc.      Lincoln, Nebraska  
[www.lincolngemmineralclub.org](http://www.lincolngemmineralclub.org)



Volume 53, Issue 5  
January 2011

Pick & Shovel

3

## LINCOLN GEM & MINERAL CLUB'S 32ND ANNUAL ROCK SWAP

JANUARY 22, 2011 1:00PM - 5:00PM



**BETHANY PARK SHELTER**  
64TH & VINE STREET LINCOLN, NEBRASKA

**FREE ADMISSION**  
BUY - SELL - TRADE - ROCKS - MINERALS -  
FOSSILS - JEWELRY - EQUIPMENT

CASH SALES MUST BE COMPLETED USING SWAPPER DOLLARS. SWAPPER DOLLARS ARE AVAILABLE FROM THE CLUB TREASURER AT A 10% SURCHARGE, PAYABLE BY THE BUYER.

LINCOLN GEM & MINERAL CLUB BOX 5342 LINCOLN NE 68505-0342  
CONTACT RICHARD PETERSON (402) 489-2996

Volume 53, Issue 5: January 2011

### GENERAL MEETINGS / ACTIVITIES

Regular monthly meetings are held at 7:00 p.m. at the Bethany Park Shelter House on the third Thursday of the month: Sep., Oct., Nov., Feb., Mar., Apr., and May; the second Sunday in December; and the fourth Saturday in January. Youth activities begin at 6:30 p.m. on the same dates. Summer meetings and other activities will be announced as they are planned.

**Annual Swap & January Meeting**  
**Rock Swap**  
 January 22, 2011  
 1:00 - 5:00 p.m.  
**January Meeting**  
 7:00 p.m.

**Pebble Pups**  
 Activity: No special activity

**Monthly Rock Party**  
 January 29, 2011  
 Hosted by the Marburgers in Hickman.  
 See details on page 2 of this issue!



Friday, January 21, 2011      **B3**

**CALENDAR ■ Upcoming events**

Saturday — **Mid-winter rock swap** — Lincoln Gem & Mineral Club, 11 a.m.-5 p.m., Bethany Park Shelter, 65th and Vine streets. Contact: Richard, 402-489-2996.

C6      Saturday, January 22, 2011      **THE (402) 411**      Lincoln Journal Star

**CALENDAR**

**■ Events**

**Mid-winter rock swap** — Lincoln Gem & Mineral Club, 11 a.m.-5 p.m., Bethany Park Shelter, 65th and Vine streets. Contact: Richard, 402-489-2996.



# Mid-Winter Rock Swap

## January 22, 2011

**Lincoln Gem & Mineral Club's Annual Swap—GUEST LIST**  
Saturday, January 22, 2011

Name	Address	Zip
Jim Noll	14527 CHARLES ST Omaha	68154
James Joyce Olson	10102 W Center Rd Omaha	68124
Mark Kruse	14900 N 27th DANEY	68336
Shirley Bruce	14900 N 27th DANEY	68336
Gene Wessel	4431 Colfax Circle Lincoln	68504
BRYAN DAMBERGER	500 RUSSELL FIRTH NE	68358
Kenneth M. Jensen	665 Hwy 58 St. Sidney NE	68122
Connie Stang	Helina, Montana	
Carmen Reznick	838 A St Lincoln	68502
Kurt Thiel	5210 54th Apt 37	68516
Andrew Tavelis	5210 54th Apt 32	68516
Melvin Tucker	2925 So 42	68506
Mark Awakakuni - Sweetland	Box 30900 Lincoln	68503 - 0900
Bob Mertz	3511 T Lincoln Ne	68503
Doug Shonerd	6908 X St. Lincoln, Ne	68505
Cathy Lyle Schuq Castel	2075 S. 9th St. Lincoln, NE	68502
Linda Guenter	3840 W Lincoln	68503
Judy + Casey Wilken	7638 Kennelley Dr. Lincoln	68516
John Dougherty	5625 Glade Lincoln	68506
Mike + Tina Etmand	2626 No 36 Lincoln	68506

**Lincoln Gem & Mineral Club's Annual Swap**  
Saturday, January 22, 2011

**Club Members Participating and any remarks they would like to make**

Richard Peterson - greet, keep it up	
Corey beer	Sally + Leah Anderson
Jayne beer	Linda Guenter
Brian beer	Andrew Judge
Edward R Idse	Kathleen Melcalf
Vera Lyman	Al Stewart
Stella Fwessen	
MaKenzie Thiessen	
Sharon Markunga	
Jim Markunga	
John Harrison	
Ed Dvorak	
Randy Cropp	
Judy Cropp	
Jim Noll	
Quay M. Mahan	
Judith Bay	
Karon + Charly Messenger	
Joyce Carrel	
Bill E. Stubby Prokel	
Bred Nielsen	
David DeGrueter	
Connie McCartney	

Lincoln Gem and Mineral Club's 32nd ANNUAL ROCK SWAP Page 1 of 1  
[lincoln craigslist](#) > event > events email this posting to a friend

**1/22: Lincoln Gem and Mineral Club's 32nd ANNUAL ROCK SWAP (LINCOLN, NE)** please flag with care: [2]

Date: 2011-01-22, 12:38AM CST miscategorized  
 Reply to: [evnt-jugg-2173631199@craigslist.org](mailto:evnt-jugg-2173631199@craigslist.org) prohibited

Lincoln Gem and Mineral Club's 32nd ANNUAL ROCK SWAP, January 22, 2011 -- 1:00PM to 5:00PM -- BETHANY PARK SHELTER 64th and Vine Street, Lincoln, NE. spam/overpost

FREE ADMISSION best of craigslist

BUY - SELL - TRADE - ROCKS - MINERALS - FOSSILS - JEWELRY - EQUIPMENT

<http://www.lincolngemmineralclub.org/2011-rockswap3-color.pdf>

Location: LINCOLN, NE  
 it's NOT ok to contact this poster with services or other commercial interests

PostingID: 2173631199

Copyright © 2011 craigslist, inc. [terms of use](#) [privacy policy](#) [feedback forum](#)

<http://lincoln.craigslist.org/evnt/2173631199.html>

FREE ADMISSION 32nd ROCK & GEM SWAP Page 1 of 1  
[lincoln craigslist](#) > for sale / wanted > free stuff email this posting to a friend

Avoid scams and fraud by dealing locally! Beware any deal involving Western Union, Moneygram, wire transfer, cashier check, money order, shipping, escrow, or any promise of transaction protection/certification/guarantee. [More info](#) please flag with care: [2]

**FREE ADMISSION 32nd ROCK & GEM SWAP (Lincoln, NE)** miscategorized

Date: 2011-01-21, 1:52PM CST prohibited  
 Reply to: [sale-qkklb-2172700112@craigslist.org](mailto:sale-qkklb-2172700112@craigslist.org) spam/overpost

Lincoln Gem and Mineral Club's 32nd ANNUAL ROCK SWAP, January 22, 2011 -- 1:00PM to 5:00PM -- BETHANY PARK SHELTER 64th and Vine Street, Lincoln, NE. best of craigslist

FREE ADMISSION

BUY - SELL - TRADE - ROCKS - MINERALS - FOSSILS - JEWELRY - EQUIPMENT

<http://www.lincolngemmineralclub.org/2011-rockswap3-color.pdf>

Location: Lincoln, NE  
 it's NOT ok to contact this poster with services or other commercial interests

PostingID: 2172700112

Copyright © 2011 craigslist, inc. [terms of use](#) [privacy policy](#) [feedback forum](#)

<http://lincoln.craigslist.org/for-sale-wanted/2172700112.html>



# Mid-Winter Rock Swap January 22, 2011



Secretary Sharon Marburger and Treasurer Vera Lyman are ready to open the doors to the public. Stella and Makenzie Thiessen wait for bidders at the Silent Auction.



Board member James Marburger shows off his walking ability following knee replacement surgery.



President Richard Peterson checks out the Silent Auction table. Looks good!

## LGMC Member Swappers



Ed Dvorak



Jayne Beer



Susy McMahan



Robert "Rowdy" Cropp



Ed Ridge



Charles "Wooly" Wooldridge



# Mid-Winter Rock Swap January 22, 2011



LGMC member Charles Messenger shares a laugh with LGMC swapper John Harrison



LGMC members Charles and Karen Messenger make the rounds to check out all the goodies.

## Swappers from Nebraska Mineral & Gem Club (aka The Omaha Club)



Dick Farlow



Jim Null double duties as an LGMC and Omaha club swapper



Eric Fritsch



Alan and Tammy Jeanneret



Greg and Betty Syslo



# Section

# 2g

## **SECTION 2g – OFFERINGS TO MEMBERS OR GUESTS - LIBRARY**

The library continues to grow with member donations and subscriptions. Out of print journals and magazines are solicited and several “missing” magazine issues have been located and donated to the library.

Pick & Shovel - All issues of the club bulletin since its inception are available in hard copy and electronic copy. The Historian also maintains a set.

Lapidary Journal magazine - All but 6 random issues under the *Lapidary Journal* masthead.

Gems & Minerals magazine - All issues from 1957 until its demise around 1990.

Rock and Gem magazine - Most issues from its inception in 1974 to date.

Earth Science journal - incomplete set with issues beginning about 1948 and continuing until it was annexed by American Geological Institute.

Desert Magazine - Incomplete set with issues dating from the mid-1950s up to its demise.

Master's Theses from about 15 students who have been financially supported by the club.

Approximately 250 books on various subjects including mineralogy, paleontology, geology, lapidary, faceting, metal smithing, and history.

Several maps showing collecting areas.

Assortment of VCR tapes, CDs and DVDs on mineral identification, slide shows, and videos.



# Section

## 2h

# Field Trips—JESSIEVILLE, ARKANSAS

## August 20-21, 2011

### AUGUST FIELD TRIP

by Jim Marburger, Field Trip Chairman

The quartz-collecting trip to Arkansas is upon us and I hope you have your bags packed. We will be collecting at the Ron Coleman Mine on August 20 from 8-5. The mine is located 16 miles north of Hot Springs on Highway 7.

- ◆ From Hot Springs, drive 2 miles past the signal light at Hot Springs Village to Coleman's Rock Shop (on the left). Turn left immediately past it and follow the signs for 2 more miles to Ron Coleman Mining, Inc.
- ◆ From Russellville, pass the town of Jessieville (the school is all you will see) and watch for Coleman's Rock Shop on the right in about 2 miles. Turn right immediately before it and follow the signs for 2 more miles.

The on-site RV park has 12 full hookup spaces, and 10 electric and water only spaces. There is also a shower building with Laundromat. The fee is \$12.50 per night and they do not take reservations. For non-campers, there is a Holiday Inn Express clone called the Village Inn which is located 4 miles away. That phone number is 1-888-922-9601.

The next day (21st), you have the option of digging for diamonds at the Crater of Diamonds State Park located near Murfreesboro or collecting more quartz near Mt. Ida. Murfreesboro is about 60 miles southwest of Hot Springs and Mt. Ida is about 40 miles west of Hot Springs. Woolly will provide information on the Mt. Ida portion of the trip.



Photos courtesy of Jim & Sharon Marburger



Wildlife





Field Trips—JESSIEVILLE, ARKANSAS  
August 20-21, 2011



Jim Marburger & Andrew Tiedje on their way to dig quartz



Corey Beer poses with his partially exposed, very large quartz crystal



Charles Wooldridge and wife Jackie Barnhardt dig and find quartz



Sharon Marburger finds a heart-shaped rock



Jim Marburger finds a nice quartz cluster

Photos courtesy of Jim & Sharon Marburger



# Field Trips—JESSIEVILLE, ARKANSAS

## August 20-21, 2011

Pick & Shovel

5

### PERSPECTIVES OF ARKANSAS

by Jim Marburger, Field Trip Chairman (with Sharon's two-cents worth added)

We had a great turnout for the Arkansas field trip. It was mighty hot; I suggest spring or fall if we decide to do it again. Even through the heat, everyone seemed to have a good time.

The drive through Arkansas was very scenic; pine and oak trees, squiggly roads that went up and down following the mountainsides, streams, and lakes. The



natives were quite friendly and helpful. One kind gentleman, after observing our license plate, suggested, "Y'all got a bit o' drivin' ta do if yure gonna git home in time fer supper." Ya gotta love the accent!

The Andersons, Marburgers, and Andrew Tiedje camped at the Ron Coleman Mine campground which was very nice. It was a good thing that the Andersons' campsite was next to us. Ed noticed one of our trailer tires was low, so the always-prepared Ed pulled out a tire pump from his toolbox and pumped up the tire.



It appeared that everyone had fun digging through the 40 or so piles of mine run. As it was predicted to be 115° + on Saturday, we made an early start, arriving at 8 a.m. when the gates opened. Sharon and I could stand the heat for about two hours, then retired to air conditioned comfort (or not, since the high



Jackie & Jayne rinsing off some finds.

humidity caused the unit to freeze up) where we proceeded to nap.

Colemans had two very nice rock shops. Some of us spent a little money at them. There were plenty of other rock shops in the area, however, we did not stop at them. Hot Springs Village was a quiet little town, but appeared to have all the amenities of the big city. We were surprised at the variety of services available.



One of Jayne's treasures.

Saturday's intense heat brought forth a loud and intense thunderstorm that night. There was a very close lightning strike, within about a quarter mile of the campground.



Jackie W. and Donna & Ed Anderson arriving at Mt. Ida.

Sunday found us at Mt. Ida where we had lots of fun. The day was totally overcast; still hot and humid, but without the intensity of the sun. Corey Beer hunted too fast and I couldn't keep up with him. I'm sure I missed out on a lot of terrific finds by not being able to dog him.

Sharon thinks she made the best find of all. Arkansas' Sonic drive-ins have sweet potato tots! Yummy!

We got about halfway home and Sharon was driving when cars passing us started honking and waving. We pulled over and discovered we'd blown a tire on the trailer. Funny, it wasn't the one that Ed inflated for us. Fortunately, we have tandem tires on the trailer, so the rim with nothing-but-whiskers left on it, was not damaged. We spent about two and a half hours trying to locate another tire so we'd have a spare, but finally gave up and continued the journey home. We arrived safely home around 8 p.m. with no further trouble.

Even with our limited time spent collecting on this trip, we came home with more quartz than any person could ever use. I'm sure the others feel the same, especially since they spent a lot more time in the field.

Photos courtesy of Sharon Marburger.



# Field Trips—JESSIEVILLE, ARKANSAS

## August 20-21, 2011

6

Pick & Shovel

### PERSPECTIVES OF ARKANSAS—CONTINUED

Ed & Donna Anderson

We had a good time on the trip to Arkansas. At the Coleman Mine, I bought a basket of mine concentrate for \$75 for Donna to look through while I went to hunt crystals. She found some great pieces in that basket; one would retail for about \$100 and another would sell for maybe \$50 or \$60. I found some nice pieces at the Coleman Mine and a few more over at Mt. Ida where we hunted. Frankly, I just don't have the eye for seeing crystals in the dirt like some people do. I visited with a fellow from Minnesota who would stand talking to me, and every once in a while, just pluck a point out of the dirt at our feet. I guess I can only do one thing at a time. I am not a multi-tasker.

Maybe I am doing something else wrong, too. He said he had come down to Arkansas to hunt crystals six times last year and only one trip cost him out of his pocket. I thought he meant he sold the crystals for that much. He said he plays blackjack at the casinos on the way down from Minnesota, and knows when hold 'em and knows when to fold 'em. What an amazing story to hear out there in the 100° plus heat.

Oh, by the way, I bought another basket to bring home for Terry and Leahh to go through, and they did

not find nearly the crystals that Donna did.

We thank our companions for the fellowship while we were on this trip. It is so great to get out there and uncover I bit of nature that has not been observed before.



Jackie W.'s big find. Note Wooly's wrist in the picture in comparison to the specimen. Awesome!

Photos courtesy of Sharon Marburger.



Lunch at Fiddler's Ridge near Mt. Ida.

**Open House**

Thumbnail to décor size

- Mineral specimens
- Faceting quality crystals
- Rough

We invite you to drop by during the Open House at 15915 Josephine St., Omaha, NE 68136 Bruce & Debra Sturges

## The Finest Things

We offer a large selection & variety of high quality minerals.

WOW!

Various types of ROUGH & CUT Rainbow Obsidian, Rhodochrosite, Opal of all kinds, Blue Agate, Turquoise, Malachite, Gem Silica, Pietersite, Chrysoprase, Mozarkite, Moonstones, and much more...

Saturday, Nov 5th  
10:00am – 4:00pm

Sunday, Nov 6th  
1:00pm – 4:00pm

Save the Dates!  
More info in next month's newsletter. All mineral, rock & gem enthusiasts welcome.

402-680-4051; [bruce@thefinestthings.com](mailto:bruce@thefinestthings.com)



A nice crystal found by one of the non-LGMC collectors at the Ron Coleman mine.



Field Trips—JESSIEVILLE, ARKANSAS  
August 20-21, 2011

Pick & Shovel

7

PERSPECTIVES OF ARKANSAS—CONTINUED



Wooly tried to scare us with his intense collecting skills.



Wooly hunting on the hillside while Andrew lugs his bucket of finds back to the van.



Corey studying a crystal found in the mud. I knew I should have followed him around!

Photos courtesy of Jayne Beer and Sharon Marburger.

Brian and Wooly hauling Jackie's big find over to the wash station.



The Beer Family - hard at work!



**J J & L Rocks & Minerals**

P.O. Box 68  
Hickman, NE 68372

330 Locust  
Hickman, NE 68372

**John Harrison**  
**Lee Harrison**  
**402.792.2337**

**James Marburger**  
**Sharon Marburger**  
**402.792.2348**

jimandjohn@jjlrocksandminerals.com  
www.jjlrocksandminerals.com  
jjlrocksmin - Ebay Username



Proudly serving  
the hobby for  
35 years



## Field Trips—BARNES, KANSAS

November 12, 2011

# Field Trip to Barnes, KS November 12, 2011 Details on page 2.

2

Pick & Shovel

### NOVEMBER 12 FIELD TRIP

The field trip to Barnes, Kansas and Martin Weber's gravel pit is set for 10:00 a.m., November 12, 2011.

Barnes, Kansas is approximately 86 miles southwest of Lincoln. Probably the simplest way to get there is to head toward Odell, Nebraska. Approximately 3 miles west of Odell, turn south on Nebraska-112 South (West 103 Road). At the state line, the road turns into Kansas-148; after you cross the state line, go south to the Pony Express truck stop (or U.S. 36 highway) and turn right (west). Go 2 miles, then turn left (south) for 2½ miles. We will meet at the Pony Express truck stop, then head to the gravel pit at 9:45 a.m.

Material to be found include sandstone, opaline sandstone, limestone, shale, granite, unakite, feldspar, hematite, limonite, quartz in jasper and chalcedony, mica, calcite, fossilized wood, and fulgurite.

Release of liability forms will be available at the gravel pit. Remember to bring your typical safety equipment: gloves, hat or hard hat, safety glasses, closed toed or steel toed shoes, bug spray, sunblock, drinking water, first aid kit, and weather-appropriate clothing. Mr. Weber stated he requires no specific safety items, but LGMC requests you be smart. You are responsible for your own safety.

Volume 54, Issue 3: November 2011

Photos courtesy of Jim & Sharon Marburger



Road to collecting area



Parking area and barge roof in background



Barge used to mine gravel  
The high pressure water sprayer at the front of the barge was used to erode the hillside into easily accessible gravel. This barge effectively was used to erode a one-half mile hill.



# Field Trips—BARNES, KANSAS

## November 12, 2011



Waiting for the late arrivals



Mineral Monkey Leahh Anderson with the quarry dog



(Right) An agatized fossil found by Dan Cromer.

(Below) Corey Beer, Dan Cromer, Mark Awakuni-Swetland, and Jim Marburger hunt a small gravel pile.



Andrew Tiedje hunts the hillside



Photos courtesy of Jayne Beer, Jim & Sharon Marburger, and Ed Ridge



# Field Trips—BARNES, KANSAS

## November 12, 2011

6

Pick & Shovel

### FIELD TRIP

By Jim Marburger

The club was invited to go to a gravel pit near Barnes, Kansas on November 12. The group met at the Pony Express Truck Stop on Highway 36. From there, we traveled to the Finlayson Sand and Gravel Quarry for a day of fun and collecting.

Those in attendance were Richard Peterson; Charles Wooldridge; Andrew Tiedje; Brian, Jayne, and Corey Beer; Susy McMahan; Ed Ridge; Terry and Leahh Anderson; Wendy Braden; Mark Awakuni-Swetland; Dan Cromer; and Sharon and me. Three members of the North Central Kansas Rock Club attended, also.

Martin Weber, the current caretaker/owner of the quarry was an informative and likeable fellow. He told of the history of the property and gave an entertaining talk about how the property was mined in its day. It was amazing to us all that a powerful stream of water was used to take down a hill - that hill being more than a quarter mile in length.

Dan Cromer found an excellent fossilized specimen, which was probably the best find of the day. I hope Dan shares a picture of the piece, or brings it to a meeting to show.

Mr. Weber also contacted a neighbor and received permission for us to collect at his sand and gravel quarry.

I was not feeling well so Sharon and I left early. We are sorry that we missed out on collecting at the second quarry and the Little Blue River. The reports coming back to me indicate that everyone had a lot of fun.



Three photos courtesy of Sharon Marburger



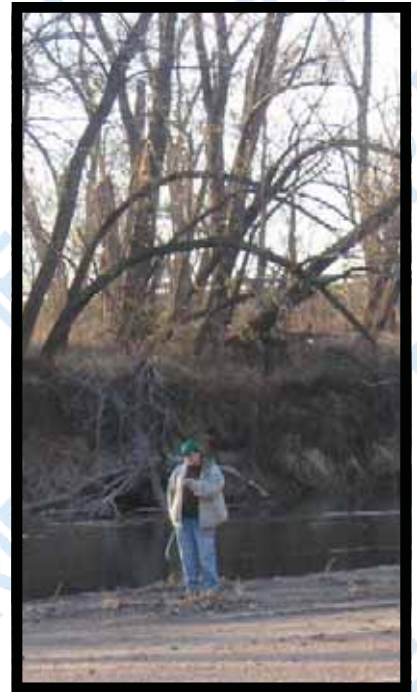
Three photos courtesy of Ed Ridge





**Field Trips—LITTLE BLUE RIVER, NEBRASKA**  
**November 12, 2011**

Photos courtesy of Jayne Beer



# Section

## 2i





# Lincoln Gem & Mineral Club

## MENU

MEETINGS

NEWSLETTERS

MEMBERSHIP

CONTACTS  
OFFICERS  
BOARD MEMBERS

ARTICLES  
OF INCORPORATION  
AND BY-LAWS

LINKS



2012  
LGMC SHOW

CLUB SHOW PROGRAMS

2012  
LGMC SHOW DISCOUNT COUPON

## Purpose

The purpose of this club is to study, promote an interest in, and disseminate knowledge of Lapidary and various Earth Sciences including but not necessarily limited to geology, paleontology and mineralogy. It is the Clubs purpose to provide education in these fields to its' members and to the general public; particularly youth and student groups.



**LINCOLN, NEBRASKA**





## **SECTION 3 – PUBLICATIONS AND PUBLICITY**

### **INDEX**

Section 3a	Pick & Shovel
Section 3b	Local Media
Section 3c	Mid-Winter Swap Flyer
Section 3d	Annual Show Flyer

Section

3a





# PICK & SHOVEL

Lincoln Gem & Mineral Club, Inc.

Lincoln, Nebraska

[www.lincolngemmineralclub.org](http://www.lincolngemmineralclub.org)



Volume 53, Issue 9  
May 2011

## BOARD OF DIRECTORS

### President

Richard Peterson, 402-489-2996  
[padr20@yahoo.com](mailto:padr20@yahoo.com)

### 1<sup>st</sup> Vice-President

Aulden Stewart, 402-483-1044  
[mmstewart@inebraska.com](mailto:mmstewart@inebraska.com)

### 2<sup>nd</sup> Vice-President

Ed Dvorak, 402-946-3041  
[ed20649@windstream.net](mailto:ed20649@windstream.net)

### Treasurer

Vera Lyman, 402-464-6089

### Secretary

Sharon Marburger, 402-792-2348  
[lgmsecretary@yahoo.com](mailto:lgmsecretary@yahoo.com)

### Board Member

Robert Cropp, 402-465-8432  
[rowdyrc@hotmail.com](mailto:rowdyrc@hotmail.com)

### Board Member

James Marburger, 402-792-2348,  
[jm24122@windstream.net](mailto:jm24122@windstream.net)

### Board Member

Edward Ridge, 402-477-8469

### Board Member

Charles Wooldridge, 402-416-3233  
[charles.wooldridge@nebraska.gov](mailto:charles.wooldridge@nebraska.gov)

## GENERAL MEETINGS / ACTIVITIES

Regular monthly meetings are held at 7:00 p.m. at the Bethany Park Shelter House on the third Thursday of the month: Sep., Oct., Nov., Feb., Mar., Apr., and May; the second Sunday in December; and the fourth Saturday in January. Youth activities begin at 6:30 p.m. on the same dates. Summer meetings and other activities will be announced as they are planned.

### 2011 Meeting Dates

#### Board

Jun Social: Pittards' Residence  
(details next month)

Jul 10: Annual Grinding Party  
& Picnic in the Park

Aug Social: Wooly's Home

Aug 31 (Sep)      Sep 15

Oct 5              Oct 20

Nov 2              Nov 17

Nov 30 (Dec)      Dec 4

#### General

May 19

General Meeting  
**May 19, 2011**  
7:00 p.m.  
Program: "German Agates"

Pebble Pups  
**May 19, 2011**  
Meeting at 6:30 p.m.  
"Copper"

Monthly Rock Party  
**May 21, 2011**  
6:00 p.m.  
Hosted by Steve May  
16300 Hickman Ridge Rd.  
Roca, NE  
(see inside for directions)

## BOARD MEETING

Summer break.

Next meeting: August 31, 2011 (September meeting)

The purpose of this corporation shall be to study, promote an interest in, and disseminate knowledge of lapidary and various Earth Sciences including but not necessarily limited to Geology, Paleontology and Mineralogy. It shall be a particular purpose of the corporation to provide education in these fields to its members and the general public, especially to youth and student groups.

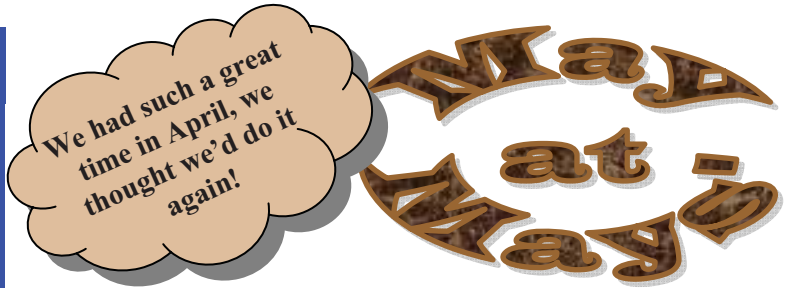
### PRESIDENT'S MESSAGE

by Richard Peterson

Our April Rock Party was hosted by Steve May at his home near Roca, NE. Steve and his wife, Carolyn, welcomed us in for a very enjoyable evening. After a delicious potluck dinner, centered around roast turkey, mashed potatoes, and gravy prepared by our hosts, we talked about how to make our annual show grow into an even more successful event. Then it was on to lapidary, good conversation, and learning more about our hobby



We are all looking forward to a summer of rock hounding and new finds. Our planned club field trip to Arkansas to hunt quartz crystals and diamonds will be a great opportunity for members to expand their summer adventures. With gas prices what they are, maybe we can consider carpooling and sharing the travel costs.



**ROCK PARTY**  
**Saturday, May 21 at 6:00 p.m.**  
**Steve May residence**  
**16300 Hickman Ridge Rd.**

**Our host will provide grilled hamburgers and cheeseburgers. Bring your hot and/or cold dishes to accompany this fare. There is always good food at our events so bring your appetites, too! Remember your hobby projects! We plan to have a fun-filled and educational evening!**

#### DIRECTIONS





- Go south on 68th Street from Saltillo Road (toward Hickman).
- Turn left (east) at Roca Road (flashing light).
- Go one block and turn right (south) on Hickman Ridge Road.
- 16300 is the 5th house on the left. The party will be held in the building to the south of the house. You may park in the house drive or the rock drive for the building.

### SCIENTIST SUNDAYS

**Sunday with a Scientist**  
**UNL: Morrill Hall**  
**Program Schedule**

May 15:	Extreme Weather
June 19:	Tissue Mechanics
July 17:	Fishes of Nebraska
August 21:	Climate Change
September 18:	Plants, Feeding the World
October 16:	Fossils
November 20:	Viruses
December 18:	Minerals & Gemstones

### REFRESHMENTS SCHEDULE

	<b>May 19: Cookies</b>	<b>Richard Peterson</b> <b>Sharon Marburger</b>
	Sep 15: Pies	Jim Atkins Charles Wooldridge
	Oct 20: Pies	Linda Guenter Vera Lyman
	Nov 17: Cookies	Stella Thiessen Andrew Tiedje

### SUNSHINE

If you have any news for our SUNSHINE corner, please let the editor know.

**No reported illnesses or deaths! Yea!!**



## GENERAL MEETING MINUTES

April 21, 2011, Bethany Park Shelter

The meeting was called to order at 7:02 p.m. by President Richard Peterson. Twenty-five members, two Mineral Monkeys, and two visitors attended. Visitors were Bill Rohren and Barb Walker, who stated they attended the show and wanted to check out the club.

### **ANNOUNCEMENTS:**

We had a great rock party at Steve May's place on April 16. Steve offered to hold the May rock party if no one else wanted to do it. Roger and Mary Pittard volunteered to host the June rock party and selected June 25 at 2:00 p.m. Charles Wooldridge volunteered to host the August rock party and he will announce the date and time later. The addresses and directions for all parties will be published in the respective issues of the *Pick & Shovel*. President Pete reported that the Board approved an investigative committee of one, Andrew Tiedje, to look into creating a Facebook page for the club. Andrew is scheduled to make the presentation at the May Board meeting.

The Midwest Federation Convention is slated for September 8-11, 2011 in Toledo, Ohio. The club needs to send delegates to the meeting. Jim and Sharon Marburger plan to attend, but they cannot be delegates as they hold Chair positions on the MWF Executive Committee. Members are encouraged to notify President Pete if they would like to be a delegate.

Pick & Shovel editor, Sharon Marburger, offered a heartfelt apology to the Pabian Memorial Committee. It was published that LGMC provided the chicken for the memorial when in truth it was purchased with individual donations.

### **OLD BUSINESS:**

The minutes of the March meeting were published in the *Pick & Shovel*. Charles Wooldridge moved to accept the minutes as published, second by Pat Dvorak; motion carried. The Treasurer's Report was read by Treasurer Vera Lyman. After some discussion, Jim Marburger moved to accept the Report as read, second by Ed Dvorak; motion carried.

### **NEW BUSINESS:**

The Board thinks it is a good idea to update the club's business card, making it generic so it won't have to be replaced on an annual basis. The question of how to pay for the cards was asked and it was decided the Board would look at the finances to determine how payment will be made.

Charles Wooldridge reported that UNL requested someone pick up the program slides belonging to Roger Pabian. Wooly will pick them up and keep them with the library for now.

Mary Pittard engaged volunteers to provide snacks for the September, October, and November meetings. Jim Atkins and Charles Wooldridge will take September and provide pies, Linda Guenter and Vera Lyman will offer October pies, and Stella Thiessen and Andrew Tiedje volunteered for November cookies. Many thanks to our volunteers.

### **SHOW REPORT:**

Although attendance was greatly reduced this year, probably due to excellent weather and the economy, the Show did amazingly well. The dealers reported being satisfied with their sales, and a preliminary report suggests the club stayed on the plus side of zero. Accolades go to Kay Jurgens and Dan (Cromer) Norris for another excellent job running the youth booth. There is no report from the UNL/State Museum regarding their booth. However, it was reported that Messrs. Harris and Joeckel found several items at the show to display at the State Museum's lapidary exhibit, and that they would also like to borrow our fluorescent display for the exhibit.

2012 Show Chairman, Ed Dvorak, states he already has a special feature for the 2012 Show. He would like to hold a brainstorming meeting in upcoming weeks.

### **FIELD TRIPS:**

Jim Marburger announced he is planning a trip to the Mt. Ida area of Arkansas in mid-August to collect quartz. The plan is to also spend a day at the diamond location. Watch the *Pick & Shovel* for more

*(Continued on page 4)*

## BOARD MEETING MINUTES

### LGMC Board Meeting, March 30, 2011, Gere Library

The April Board meeting was called to order by President Richard Peterson. Board members present were Richard Peterson ("Pete"), Al Stewart, Ed Dvorak, Vera Lyman, Sharon Marburger, Robert ("Rowdy") Cropp, Jim Marburger, Ed Ridge, and Charles Wooldridge ("Wooly").

#### OLD BUSINESS:

Minutes of the March meeting were distributed. Wooly moved to accept the minutes, second by Ed Dvorak. Motion carried. The Treasurer's report was distributed. Ed Dvorak moved to accept the report, second by Al Stewart. Motion carried.

The Science Fair was attended by Ed Ridge; Jayne, Brian, and Corey Beer; Linda Guenter; and Susy McMahan. It was reported that approximately 1,000 people attended. Some attendees were interested in becoming members of the club.

The Pabian Memorial committee reported 54 RSVPs had been received thus far. Jayne Beer is making favors using basil.

Andrew Tiedje is slated to make the Facebook presentation at the May Board meeting.

Final preparations for the Show. Looking for volunteers to work the club booth. The new banner was handed over to Ed D. The Stewarts have the certificates ready to go. Ed D. will provide a telephone interview with KFOR at 8:15 a.m. on Thursday preceding the show.

Business cards were discussed once again. Jim Marburger will look into getting some made.

#### NEW BUSINESS:

A brief discussion was had regarding field trips. Suggestions were a trip to Arkansas, possibly in August; a trip to the Bartels Museum at Concordia College in Seward; and perhaps a trip to the Des Moines area to collect Coldwater Agates.

The meeting adjourned at 7:16 p.m. on a motion by Ed Dvorak, second by Rowdy Cropp. Motion carried.

Respectfully submitted,  
*Sharon Marburger*

## GENERAL MEETING MINUTES - CONT.

*(Continued from page 3)*

information.

The meeting adjourned to program at 7:41 p.m. with a motion from Jim Marburger, second by Ed Dvorak. Motion carried.

#### PROGRAM:

The program on Stromatolites was presented by Charles Wooldridge. Wooly has first-hand knowledge on the subject as he spent his last vacation at Laguna Bacalar. It was a very nice program. Thanks Wooly!

## J J & L Rocks & Minerals

P.O. Box 68  
Hickman, NE 68372

330 Locust  
Hickman, NE 68372

**John Harrison**  
**Lee Harrison**  
**402.792.2337**

**James Marburger**  
**Sharon Marburger**  
**402.792.2348**

jimandjohn@jjlrocksandminerals.com  
www.jjlrocksandminerals.com  
jjlrocksmin - Ebay Username



Proudly serving  
the hobby for  
35 years



## ONGOING PROJECTS / EVENTS

### SPECIMENS FOR SCHOOLS

We are still collecting samples for the Lincoln Public Schools' (LPS) 5th grade science classes. The requested specimens are to be 1 to 2 inches in size, and 12 to a bag. If possible, a minimum of 12 bags are requested per specimen. (To help with the confusion, this would be 144 pieces of any one specimen.) The bagged specimens are to be given to Vera Lyman for delivery to the LPS contact. The list of requested specimens is below:

1	Quartz	13	Obsidian
2	Feldspar	14	Pumice
3	Mica	15	Sandstone
4	Calcite	16	Shale
5	Halite	17	Limestone
6	Talc	18	Chalk
7	-----	19	Coal
8	Pyrite	20	Marble
9	Copper Sulfide	21	Slate
10	Sulpher	22	Quartzite
11	Granite	23	Petrified Wood
12	Basalt	24	Fossil Gastropods

### HOBBY FUN

Would you like to have some hobby fun? Consider hosting a monthly Rock Party. It doesn't matter where you hold it. All you have to do is set the date and time, provide place settings for the potluck, and have areas to work in and chairs or floor to sit on. Let a Board Member know if you are interested in hosting.

Still Available in 2011:

September, October, November, December

### ON THE HUNT

The Club Library is missing the following issues of the *Lapidary Journal*:

1960 - February	1978 - March
1968 - April	2002 - May, June
1969 - April	2006 - April

If you spot any of these issues, please purchase them and let Wooly, Judy Cropp, Vera Lyman, or Sharon Marburger know. You may donate them or be reimbursed.

### 2011 ALL AMERICAN

As contributors can attest, it is much easier to supply information for the next All American Club Award Application as events happen, while details are fresh in your mind, and while you can still find photos and thank you notes. This is a great way to preserve the club's history, and you are a part of it!

If you make any presentations, programs, take pictures at club events, or anything else to benefit the club, please provide copies to Historian Sharon Marburger for inclusion in the application. The application can be compiled as the year progresses, ensuring our history is not lost.

And - Sharon thanks you!



## SCIENCE FAIR

by Susy McMahan

On March 29, 2011, members of the Lincoln Gem & Mineral Club were invited to demonstrate at the Lincoln Public Schools/Pfizer/Novartis Science Fair. This is an activity that club members have enjoyed doing for many years! Around 500 fourth and fifth grade students submit their science projects to be judged. While they are waiting, several groups provide entertainment for the young scientists. Our site has always been a popular one. Club members Charlie and Karen Messenger also set up a fossil and bone display, and have done so for many years.

This year we decided to have a “gem dig”, as the Science Fair has moved to a larger building. Jayne Beer, Linda Guenter, and Susy McMahan ran the gem dig, using “salted” pebbles with materials donated by many club members. Although he could not be there, Charles “Wooly” Wooldridge donated great gravel that was “salted” with raw emeralds, arrowheads, fossils, and all kinds of cool stuff that made the demonstrators want to dig!! Corey Beer (our then 12-, now 13-year-old member) demonstrated lapidary, enthusiastically answering lots of questions. Ed Ridge brought fossils, a big chunk of selenite and many other specimens. He explained it all to the kids and, of course, handed out samples. He was our go-to man for questions!

One regular attendee was missing; Roger Pabian, who passed away last December. We will have to go on without him, although much of what we know, we learned from him!

Photos courtesy of  
Susy McMahan



### LINCOLN CURIOS ROCK SHOP

6625 Burlington - Lincoln, NE 68507 [Park in alley]  
(402) 310-3307

#### ► SPECIALIZING IN ARIZONA PETRIFIED WOOD ◀

- ◆ Rough stones and fossils for the hobbyist
- ◆ Polished stone items for interior décor
- ◆ Great selection of tumble-polished stones
- ◆ Natural petrified wood for landscaping

Open Tuesday thru Saturday  
10 a.m. - 6 p.m.



## MINERAL MONKEYS



Hello Monkeys! Mrs. Thiessen will have a lesson on **copper** at the May meeting. I have put together a puzzle of words associated with copper, and some locations where it is found. There is also a bonus question:

What U.S. coin contains the most copper?  
 (A) penny (B) nickel (C) dime (D) quarter



L	W	U	S	N	H	A	R	D	W	A	R	E	C	D
I	P	E	T	I	R	P	U	C	C	T	I	P	H	N
N	E	R	A	W	K	O	O	C	E	S	B	I	A	R
A	E	C	T	I	E	C	T	I	T	U	R	P	L	M
N	U	R	U	E	T	I	C	O	C	L	A	H	C	I
A	N	T	E	Z	N	O	R	B	A	F	S	A	O	G
T	E	C	O	I	N	S	W	T	L	I	S	T	P	N
N	W	C	F	W	Y	O	D	P	R	D	A	U	Y	I
O	M	O	L	P	R	O	X	I	D	E	D	L	R	B
M	E	D	I	C	A	L	T	O	O	L	S	V	I	M
A	X	C	B	W	Y	E	T	I	R	O	N	E	T	U
M	I	O	E	P	R	V	R	A	R	E	A	R	E	L
H	C	D	R	R	A	R	I	Z	O	N	A	Y	O	P
L	O	D	T	N	E	M	E	L	E	E	C	A	R	T
N	J	G	Y	T	I	C	I	R	T	C	E	L	E	C

ARIZONA

BRASS

BRONZE

CHALCOCITE

CHALCOPYRITE

COINS

COOKWARE

CUPRITE

ELECTRICITY

HARDWARE

MEDICAL TOOLS

MONTANA

NEW MEXICO

OXIDED

PIPE

PLUMBING

STATUE OF LIBERTY

SULFIDE

TENORITE

TRACE ELEMENT

UTAH

*Puzzle manually created by Sharon Marburger.*

# April



The April Rock Party was held at Hickman, Nebraska, in the shop of Steve May. Steve and his wife, Carolyn, provided a scrumptious main course for the potluck, and great accompaniments were brought in by the attendees.



Photos courtesy of Jim & Sharon Marburger

Those in attendance, in addition to our hosts, were Richard "Pete" Peterson, Al Stewart, Judy & Robert "Rowdy" Cropp, Jim & Sharon Marburger, Vera Lyman, Ed Dvorak, Ed Ridge, Richard Lieb, and Susy McMahan. Brian, Jayne and Corey Beer arrived after most of the others had left.

Prior to delving into the hobby crafts, the group held a brainstorming session on how to make the show better. Lots of good ideas were shared.

Ed Dvorak and Al Stewart worked on wire wrapping for awhile; Vera Lyman and Sharon Marburger developed a database of the library contents; Susy McMahan and Al Stewart looked over a box full of dopped stones; Pete wandered around and dabbled in everything, and everyone else worked cabochons.

Rowdy was working on a nice stone when it broke. No swearing was heard, but the agony was felt across the room.



## Silversmithing classes

The Jewelry Connection Ltd.  
Indian Village Shopping Ctr.  
13th & Arapahoe, Lincoln

Tuesdays

May 3, 2011

thru

June 21, 2011

7:00 p.m. - 10:00 p.m.

**Tuition: \$100 plus \$25 supply deposit**

**Contact:**

Jayne Beer 402-890-3307

Judith Bay 402-423-7058

or e-mail

[jbeer60070@aol.com](mailto:jbeer60070@aol.com)



## LEGISLATIVE ALERT

by Richard Peterson

Niobium mining in Nebraska is getting closer to reality. The subject first caught my eye in a March 6, 2011 *Lincoln Journal Star* article, "Niobium nirvana". Being a rockhound as well as tolerant to all the world's religions, this immediately caught my attention. Then on March 16, another article titled, "Report: Niobium deposit big" grabbed me. So where is this nirvana to be found? The "area west of Elk Creek ... has the potential to become one of the world's largest sources of niobium and other rare earth elements." The source is buried about 500 feet underground (that's over a football field and a half deep) near Elk Creek in Johnson County. Tecumseh is the Johnson County seat. How close this is to underground water reserves is unclear to me. This will affect rockhounds if seasonal water levels are altered, plus I am betting it has the potential to adversely affect water quality and the scenic environment in the Nemaha River valley.

Niobium is a rare metal found in the mineral, columbite, but is present in a range of rocks grouped as carbonatites. It is used in cell phones, wind turbines and hybrid car batteries, and to strengthen steel in the aeronautics industry. Today, 80% of the world's supply of niobium comes from Brazil. Quantum Rare Earth Development Corporation of Vancouver, Washington is acquiring "signed leases for mineral rights." "Farmer and state Senator Lavon Heidemann (1st District) of Elk Creek is another Quantum lease partner".

There are a number of ways the niobium can be realized. Being deep underground, it will either be strip mined or shaft mined or some combination thereof. What is involved as for water requirements and disposal of processing chemicals is unclear to me, but hopefully not to the Quantum developers. The first step, if processing is to take place locally, is probably the reaction of the mineral oxides with hydrofluoric acid. All club members are strongly encouraged to delve deeper into this issue. Go online and ask questions and talk to your state representatives.

## AUGUST FIELD TRIP

by Jim Marburger, Field Trip Chairman

We are planning a trip to the Ron Coleman Quartz Mine in Jessieville, Arkansas for August 19 - 22, 2011. The site is about 600 miles from Lincoln, so we plan to travel on the 19th and 22nd.

Pay a single entry and collection fee for the entire day. You may leave and re-enter as you like, so feel free to take breaks, go to lunch, shop, etc. A complementary mining bag is included with your fee, as is the guarantee of finding specimens. You may collect as much as you like for the day. If you desire more than one mining bag, they are available for a mere \$.50 each.

The mining area is open 7 days a week, 8:00 a.m. to 5:30 p.m. during the spring and summer. Admission: ages 0-6, free; 7-16, \$5.00; 17-54, \$20.00; and over 55, \$15.00.

Camping is available. The RV Park has 24 spaces with one "pull-through" space. All spaces have water and electricity, 10 of the spaces have sewer as well. There is a dump station, a concrete slab with a water faucet for washing off crystals and yourself after a hard day's dig, and picnic tables are located throughout the park. An RV is \$12.50 per night. Included in that fee is usage of the shower/bathroom building and the Laundromat. There is a pond within walking distance for those who may want to fish, and the RV Park is within walking distance of the gift shop and digging area as well.

After the quartz dig, we plan to head for the Crater of Diamonds State Park which is about 60 miles from the quartz mine. Visitors search atop a 37½-acre plowed field, the eroded surface of an ancient, gem-bearing volcanic pipe. Plowing of the field is unscheduled. Historic structures, old mining equipment, washing pavilions, and sun shelters are located on the field. Diamond mining tools are available for rent or purchase. The park staff provides free identification and certification of diamonds.

The entrance fee to search for diamonds is \$7.00 for adults; ages 6 to 12, \$4.00; and children under 6 are free.

Crater of Diamonds State Park is the perfect place to stay. There are 47 Class AAA sites with tent pads, 50

(Continued on page 10)

## WHY THE MIDWEST FEDERATION?

by Cindy Root, MWF First Vice-President

It doesn't matter which club you belong to, you will eventually hear someone ask, "Why do we have to belong to the Midwest Federation and pay for their insurance?" Really, that's two questions.

First, let's deal with the insurance question. You don't have to purchase insurance. The insurance is there to protect your club on field trips and during shows. If your club does neither, you wouldn't need it. If your club only has a portion of the membership who participates on field trips, you wouldn't need coverage for your entire club. I've heard clubs talk about getting their own insurance. Good luck. Who will you have take care of the business end of getting insurance and where will you get as cheap a rate? Check into it. People have and they've been very unpleasantly surprised.

The big question – why should we belong to the Midwest Federation? We will answer with some questions for you.

Where else will you find the resources available to your club? There are programs available for your club to use on almost any rock-hounding subject for only five dollars to cover postage and insurance. Have you ever been to a meeting where any of these programs have been used?

There are 34 committees with chairs. Has your club ever used one of these chairpersons as a resource? If not, why not?

Have you challenged yourself lately? There are several contests that occur every year with very few participants. What stops your club from entering any of these? The ones that particularly come to mind are Bulletin Editor, Articles and Website. Only three clubs entered the website contest this year. Why is that?

Have you ever visited the MWF website for information on programs, or who you could contact with questions or possibly even a committee chair in your area who might speak at one of your meetings? There are all sorts of resources available to you from the MWF. Are you aware that all of the club shows are listed by month on the website? Where else would

your club get as much coverage? If you didn't send in your show information with your club registration, all it takes to get the information on the website is a simple e-mail. Have changes that need to be made to your information? That's as simple as an e-mail, too.

Why aren't more people and clubs taking advantage of these resources? Do you get this information from your club's liaison to the MWF? Have you ever seen a MWF newsletter? Your liaison gets one every month—an AMFS newsletter too. Do they get circulated? Do you hear about the contests and other events taking place?

Ask your club's leaders about their interaction with the MWF. Do they participate or just complain? There's more to a rock hound club than preparing for the yearly show. If that's all you're getting, you need to expect more. How better to increase your participation and education concerning your hobby than to take advantage of the resources available to you by being a member of the Midwest Federation. No man is an island, but a rock club could be.

Probably the most important aspect of being an active member of the MWF is the people you will meet and the friends you will make. I'm certain that each of you has made friends among the members of your club. Think of that on a larger scale. You will be delightedly surprised at the knowledge and experience shared among MWF members. Why wouldn't you want to share in that benefit?

Are you aware that this year's convention is in Toledo and includes more than just meetings? Next year's will be in Minnesota and will be all about agates. Just because you're not the club liaison doesn't mean you can't come if you're interested.

## AUGUST FIELD TRIP - CONTINUED

*(Continued from page 9)*

amp power, water and sewer hookups that can handle up to 70 foot rigs. Supplies available in the newly renovated visitor center or in nearby Murfreesboro.

If you plan to join us on this field trip, let Jim Marburger know so arrangements can be made. This will be a fun trip, and you won't want to miss it!



### STANDING COMMITTEES CHAIRMEN

Audit	John Harrison
	James Marburger
	Ed Dvorak
Christmas Party	Edward Ridge
Education / Librarian	Charles Wooldridge
	Judy Cropp
Facebook	Andrew Tiedje
Field Trips	James Marburger
Geology Day Coordinator	Aulden Stewart
Grinding Party	Aulden Stewart
Historian	Sharon Marburger
Legislative Liaison	Andrew Tiedje
Membership Record	Edward Ridge
MWF Liaison	Vera Lyman
Programs	Richard Peterson
Property	James Marburger
Refreshments / Door Prizes	Mary Pittard
Scholarship	Vera Lyman
Show—2012	Ed Dvorak
Swap—2012	Richard Peterson
Website	Jim Atkins
Youth Activities	Stella Thiessen
	Vera Lyman
	Kay Jurgens

### LONG RANGE PLANNING & BY-LAWS COMMITTEE

<b>1 year</b>	Edward Ridge Robert Cropp
<b>2 years</b>	Charles Wooldridge Sharon Marburger
<b>3 years</b>	Vera Lyman John Harrison

### NOMINATING COMMITTEE

<b>3 years</b>	Brad Nielsen Roger Pittard
<b>2 years</b>	Robert Cropp Judy Cropp
<b>1 year</b>	Vera Lyman Edward Ridge

### ADVERTISING, SUBSCRIPTION, AND MEMBERSHIP INFORMATION

Advertising by rock / hobby business or interest is permitted with the approval of the Board of Directors. Contact the Editor with your proposed ad. The rate is set at \$20.00 per full page; \$10.00 per 1/2 page; \$5.00 per 1/4 page (minimum) per issue, paid in advance to the Club treasurer. Ads will be placed throughout the newsletter as space permits.

Subscription to the Pick & Shovel is \$15.00 per year for mailed copy.

Membership dues for the Lincoln Gem & Mineral Club are as follows:

Adults (age 16 and over) - \$15 per year or \$25 per couple (within the same household)  
Juniors - \$2 per year (with a responsible adult)

All new memberships must be accompanied by a written application. Prospective members must gain Board approval and attend one regular meeting before being approved for membership.

Answers to Mineral Monkeys' puzzle

L	W	U	S	N	H	A	R	D	W	A	R	E	C	D
I	P	E	T	I	R	P	U	C	C	T	I	P	H	N
N	E	R	A	W	K	O	O	C	E	S	B	I	A	R
A	E	C	T	I	E	C	T	I	T	U	R	P	L	M
N	U	R	U	E	T	I	C	O	C	L	A	H	C	I
A	N	T	E	Z	N	O	R	B	A	F	S	A	O	G
T	E	C	O	I	N	S	W	T	L	I	S	T	P	N
N	W	C	F	W	Y	O	D	P	R	D	A	U	Y	I
O	M	O	L	P	R	O	X	I	D	E	D	L	R	B
M	E	D	I	C	A	L	T	O	O	L	S	V	I	M
A	X	C	B	W	Y	E	T	I	R	O	N	E	T	U
M	I	O	E	P	R	V	R	A	R	E	A	R	E	L
H	C	D	R	R	A	R	I	Z	O	N	A	Y	O	P
L	O	D	T	N	E	M	E	L	E	E	C	A	R	T
N	J	G	Y	T	I	C	I	R	T	C	E	L	E	C

Mail Exchange Newsletters to:  
Lincoln Gem & Mineral Club, Inc.  
P.O. Box 5342  
Lincoln, NE 68505-0342  
Or e-mail newsletters to:  
lgmsecretary@yahoo.com

# PICK & SHOVEL

The *PICK & SHOVEL* is the official publication of the Lincoln Gem & Mineral Club, Inc., Lincoln, Nebraska. Articles and items appearing within may be reproduced in other club bulletins, provided proper credit is given to the *PICK & SHOVEL* and the author, and that a reprint of the article is sent to the editor of the *PICK & SHOVEL*.

## Your PICK & SHOVEL staff:

**Publisher:** Lincoln Gem & Mineral Club, Inc., P.O. Box 5342, Lincoln, Nebraska 68505-0342  
**Editor:** Sharon Marburger, P.O. Box 64, Hickman, Nebraska 68372, E-mail: [lgmsecretary@yahoo.com](mailto:lgmsecretary@yahoo.com)  
**Circulation:** Vera Lyman, 402-464-6089  
**Reporters:** All members are encouraged to submit articles, poetry, or drawings.

## **A special thanks to this month's contributors:**

Susy McMahan, Jim Marburger, Sharon Marburger, Richard Peterson, Mary Pittard, and Cindy Root.





Section

3b

Lincoln Journal Star

Friday, January 21, 2011 **B3**

**C6** Saturday, January 22, 2011

**CALENDAR**

■ **Upcoming events**

Saturday — **Mid-winter rock swap** — Lincoln Gem & Mineral Club, 11 a.m.-5 p.m., Bethany Park Shelter, 65th and Vine streets. Contact: Richard, 402-489-2996.

**THE (402) 411**

**CALENDAR**

■ **Events**

**Mid-winter rock swap** — Lincoln Gem & Mineral Club, 11 a.m.-5 p.m., Bethany Park Shelter, 65th and Vine streets. Contact: Richard, 402-489-2996.

Lincoln Journal Star  
**PRIME TIME**

Tuesday, March 22, 2011

**April 2-3 — Lincoln Gem and Mineral Club's 53rd annual Gem & Mineral Show**, Lancaster Event Center, 84th and Havelock. April 2, 9 a.m.-6 p.m.; April 3, 10 a.m.-5 p.m. Adults, \$5; children 11 and under, free with responsible adult. Bring canned food item for Lincoln Food Bank and get \$1 off admission. No advance ticket sales. Held in conjunction with Nebraska Association of Earth Sciences Clubs' annual show, "Wonders of the Earth." Displays of rocks, gemstones, fossils, minerals; dealers with hobby-related items for sale; demonstrations of hobby-related activities; youth activities; educational programs. More information: [Lincolngemmineralclub.org](http://Lincolngemmineralclub.org) or call Ed Dvorak at 402-946-3041 or e-mail [ed20649@windstream.net](mailto:ed20649@windstream.net).

**G20** Friday, February 11, 2011

**DINING/FAMILIES**

**Family activities**

Sunday is Geology Day at Pioneers Park Nature Center. Visitors can learn all about fossils, minerals, rocks and gemstones through displays and demonstrations by members of the Lincoln Gem and Mineral Club. This drop-in program runs 1 to 4 p.m. at the Chet Ager Building.

**FAMILY CALENDARS**

■ **Sunday**

**Geology Day** — 1-4 p.m., Pioneers Park Nature Center, Chet Ager Center. Bring your own fossils, minerals, rocks or gemstones for identification. Donations accepted.

**FREE PUBLICITY** Reach Thousands of People in the Lincoln Area - Promote Your Group!

Lincoln Events

add to event

Lincoln Gem & Mineral Club Monthly Meeting

View by Date  
**FEBRUARY, 2011**  
Today  
S M T W T F S  
30 31 1 2 3 4 5  
6 7 8 9 10 11 12  
13 14 15 16 17 18 19  
20 21 22 23 24 25 26  
27 28 29 30  
6 7 8 9 10 11 12

Lincoln Gem & Mineral Club Monthly Meeting

Like Send Be the first of your friends to like this.

Save To Your Calendar: Outlook Google iCal Yahoo! msn

date: Thursday, February 17, 2011  
time: 7:00 pm to 9:00 pm  
venue: Bethany Park Shelter House  
address: 65th and Vine  
Lincoln, NE 68501  
View map

Click to show a full view of program - February's program will be "Y'all-oween - Impress us with your Halloween costumes!" ... Ladies' meeting begins at 6:30 pm

category: Clubs and Organizations  
website: Click to visit the site

Looking for something to do before or after this event?

Lincoln Journal Star  
**Community Calendar**

Saturday, October 15, 2011

• **Lincoln Gem & Mineral Club monthly meeting at Bethany Park Shelter, North Cotner & Vine.** Youth group meets at 6:30 p.m. for a lesson in rocks and minerals, geared to assist Scouts in earning their geology badge. Business meeting begins at 7 p.m. Program: show-and-tell of summer activities. Come dressed as your favorite hobby-related item for this Halloween meeting.



# Advertising

Print

Page 1 of 1

---

**Subject:** Postings on Facebook for the show,ect.

---

**From:** Rowdy Cropp (rowdyocr@hotmail.com)

---

**To:** lgmsecretary@yahoo.com;

---

**Date:** Sunday, March 6, 2011 12:19 PM

---

Hi Sharon, you had mentioned that you wanted to know who I had posted the show dates on Facebook. Here are the ones so far:

Rock Gem and Mineral Clubs billboard

Bruker Gem and Mineral Club

Geodeland Earth Sciences Club

South Douglas Gem and Mineral Club, got a response back from them stating they would mention it at their next meeting.

Also, I didn't know if you had received your latest Rock and Gem magazine. I thought you might want to check out an interesting article under the Craftsman of the Month title in the latest edition. I will also try to post the show on more Facebook pages. You have to "join" their page to post anything on their wall, and I have to see if it is going to be a hassle or not. Have a great day!

Robert Cropp  
PO Box 29333  
Lincoln, NE.  
68529

Print

Page 1 of 1

---

**Subject:** another show posting

---

**From:** Rowdy Cropp (rowdyocr@hotmail.com)

---

**To:** lgmsecretary@yahoo.com;

---

**Date:** Sunday, March 6, 2011 7:04 PM

---

Hi again Sharon, I also posted the show on [digforcystals.com](http://digforcystals.com). They have a message board, and it went ahead and put it on this site also. Have a good one!

Also my email address is [rowdyocr@hotmail.com](mailto:rowdyocr@hotmail.com), it is listed differently on the Pick and Shovel. See ya soon.

Robert Cropp  
PO Box 29333  
Lincoln, NE.  
68529



# PICK & SHOVEL

Lincoln Gem & Mineral Club, Inc. Lincoln, Nebraska  
[www.lincolngemmineralclub.org](http://www.lincolngemmineralclub.org)



# PICK & SHOVEL

Lincoln Gem & Mineral Club, Inc. Lincoln, Nebraska  
[www.lincolngemmineralclub.org](http://www.lincolngemmineralclub.org)

### BOARD OF DIRECTORS

**President**  
Richard Peterson, 402-489-2996  
rpd120@yahoo.com

**1<sup>st</sup> Vice-President**  
Aulden Stewart, 402-483-1044  
mmstewart@inebraska.com

**2<sup>nd</sup> Vice-President**  
Ed Dvorak, 402-946-3041  
ed20649@windstream.net

**Treasurer**  
Vera Lyman, 402-464-6089

**Secretary**  
Sharon Marburger, 402-792-2348  
lmssecretary@yahoo.com

**Board Member**  
Robert Cropp, 402-465-8432  
jlleick@msn.com

**Board Member**  
James Marburger, 402-792-2348,  
jm24122@windstream.net

**Board Member**  
Edward Ridge, 402-477-8469

**Board Member**  
Charles Woolldridge, 402-416-3233  
charles.woolldridge@nebraska.gov

Volume 53, Issue 5  
January 2011

### GENERAL MEETINGS / ACTIVITIES

Regular monthly meetings are held at 7:00 p.m. at the Bethany Park Shelter House on the third Thursday of the month: Sep., Oct., Nov., Feb., Mar., Apr., and May; the second Sunday in December; and the fourth Saturday in January. Youth activities begin at 6:30 p.m. on the same dates. Summer meetings and other activities will be announced as they are planned.

**Annual Swap & January Meeting**  
**Rock Swap**  
 January 22, 2011  
 1:00 - 5:00 p.m.  
**January Meeting**  
 7:00 p.m.

**Pebble Pups**  
 Activity: No special activity

**Monthly Rock Party**  
 January 29, 2011  
 Hosted by the Marburgers in Hickman.  
 See details on page 2 of this issue!

### BOARD MEETINGS

Gere Library, Meeting Room 1, 6:30 p.m.  
 February 2, 2011

### BOARD OF DIRECTORS

**President**  
Richard Peterson, 402-489-2996  
rpd120@yahoo.com

**1<sup>st</sup> Vice-President**  
Aulden Stewart, 402-483-1044  
mmstewart@inebraska.com

**2<sup>nd</sup> Vice-President**  
Ed Dvorak, 402-946-3041  
ed20649@windstream.net

**Treasurer**  
Vera Lyman, 402-464-6089

**Secretary**  
Sharon Marburger, 402-792-2348  
lmssecretary@yahoo.com

**Board Member**  
Robert Cropp, 402-465-8432  
jlleick@msn.com

**Board Member**  
James Marburger, 402-792-2348,  
jm24122@windstream.net

**Board Member**  
Edward Ridge, 402-477-8469

**Board Member**  
Charles Woolldridge, 402-416-3233  
charles.woolldridge@nebraska.gov

Volume 53, Issue 6  
February 2011

### GENERAL MEETINGS / ACTIVITIES

Regular monthly meetings are held at 7:00 p.m. at the Bethany Park Shelter House on the third Thursday of the month: Sep., Oct., Nov., Feb., Mar., Apr., and May; the second Sunday in December; and the fourth Saturday in January. Youth activities begin at 6:30 p.m. on the same dates. Summer meetings and other activities will be announced as they are planned.

**Geology Day**  
 February 13, 2011  
 1:00 - 4:00 p.m.

**General Meeting**  
 February 17, 2011  
 7:00 p.m.  
 Program: "Yellowstone: Imprints of Geologic Time"

**Pebble Pups**  
 February 17, 2011  
 Meeting at 6:30 p.m.

**Monthly Rock Party**  
 February 19, 2011  
 Hosted by  
 Charles Woolldridge

**2011 Meeting Dates**

Board	General
Mar 2	Mar 17
Mar 30 (Apr)	Apr 21
May 4	May 19
Jun Social: to be announced	Jul 10: Annual Grinding Party
Aug Social: to be announced	Aug 31 (Sep)
Oct 5	Sep 15
Nov 2	Oct 20
Nov 30 (Dec)	Nov 17
	Dec 4

### BOARD MEETINGS

Gere Library, Meeting Room 1, 6:30 p.m.  
 March 2, 2011

The purpose of this corporation shall be to study, promote an interest in, and disseminate knowledge of lapidary and various Earth Sciences including but not necessarily limited to Geology, Paleontology and Mineralogy. It shall be a particular purpose of the corporation to provide education in these fields to its members and the general public, especially to youth and student groups.

The purpose of this corporation shall be to study, promote an interest in, and disseminate knowledge of lapidary and various Earth Sciences including but not necessarily limited to Geology, Paleontology and Mineralogy. It shall be a particular purpose of the corporation to provide education in these fields to its members and the general public, especially to youth and student groups.



# PICK & SHOVEL

Lincoln Gem & Mineral Club, Inc. Lincoln, Nebraska  
[www.lincolngemmineralclub.org](http://www.lincolngemmineralclub.org)



# PICK & SHOVEL

Lincoln Gem & Mineral Club, Inc. Lincoln, Nebraska  
[www.lincolngemmineralclub.org](http://www.lincolngemmineralclub.org)

### BOARD OF DIRECTORS

**President**  
Richard Peterson, 402-489-2996  
rpd120@yahoo.com

**1<sup>st</sup> Vice-President**  
Aulden Stewart, 402-483-1044  
mmstewart@inebraska.com

**2<sup>nd</sup> Vice-President**  
Ed Dvorak, 402-946-3041  
ed20649@windstream.net

**Treasurer**  
Vera Lyman, 402-464-6089

**Secretary**  
Sharon Marburger, 402-792-2348  
lmssecretary@yahoo.com

**Board Member**  
Robert Cropp, 402-465-8432  
jlleick@msn.com

**Board Member**  
James Marburger, 402-792-2348,  
jm24122@windstream.net

**Board Member**  
Edward Ridge, 402-477-8469

**Board Member**  
Charles Woolldridge, 402-416-3233  
charles.woolldridge@nebraska.gov

Volume 53, Issue 7  
March 2011

### GENERAL MEETINGS / ACTIVITIES

Regular monthly meetings are held at 7:00 p.m. at the Bethany Park Shelter House on the third Thursday of the month: Sep., Oct., Nov., Feb., Mar., Apr., and May; the second Sunday in December; and the fourth Saturday in January. Youth activities begin at 6:30 p.m. on the same dates. Summer meetings and other activities will be announced as they are planned.

**2011 Meeting Dates**

Board	General
Mar 30 (Apr)	Apr 21
May 4	May 19
Jun Social: to be announced	Jul 10: Annual Grinding Party
Aug Social: to be announced	Aug 31 (Sep)
Oct 5	Sep 15
Nov 2	Oct 20
Nov 30 (Dec)	Nov 17
	Dec 4

**General Meeting**  
 March 17, 2011  
 7:00 p.m.  
 Program: River Rock Challenge

**Pebble Pups**  
 March 17, 2011  
 Meeting at 6:30 p.m.  
 Lesson: Sapphires

**Monthly Rock Party**  
 March 20, 2011, 6:00 p.m.  
 Hosted by  
 Jayne Beer & Judith Bay  
 @ The Jewelry Connection

Pfizer-Novartis/LPS Science Fair:  
 March 29, 2011

### BOARD MEETING

Gere Library, Meeting Room 1, 6:30 p.m.  
 April Meeting: March 30, 2011

### BOARD OF DIRECTORS

**President**  
Richard Peterson, 402-489-2996  
rpd120@yahoo.com

**1<sup>st</sup> Vice-President**  
Aulden Stewart, 402-483-1044  
mmstewart@inebraska.com

**2<sup>nd</sup> Vice-President**  
Ed Dvorak, 402-946-3041  
ed20649@windstream.net

**Treasurer**  
Vera Lyman, 402-464-6089

**Secretary**  
Sharon Marburger, 402-792-2348  
lmssecretary@yahoo.com

**Board Member**  
Robert Cropp, 402-465-8432  
rowdycr@hotmail.com

**Board Member**  
James Marburger, 402-792-2348,  
jm24122@windstream.net

**Board Member**  
Edward Ridge, 402-477-8469

**Board Member**  
Charles Woolldridge, 402-416-3233  
charles.woolldridge@nebraska.gov

Volume 53, Issue 8  
April 2011

### GENERAL MEETINGS / ACTIVITIES

Regular monthly meetings are held at 7:00 p.m. at the Bethany Park Shelter House on the third Thursday of the month: Sep., Oct., Nov., Feb., Mar., Apr., and May; the second Sunday in December; and the fourth Saturday in January. Youth activities begin at 6:30 p.m. on the same dates. Summer meetings and other activities will be announced as they are planned.

**General Meeting**  
 April 21, 2011  
 7:00 p.m.  
 Program: Stromatolites

**Pebble Pups**  
 April 21, 2011  
 Meeting at 6:30 p.m.  
 "Malachite"

**Monthly Rock Party**  
 April 16, 2011  
 Hosted by  
 Steve May  
 16300 Hickman Ridge Rd.  
 Roca, NE  
 (see inside for directions)

**2011 Meeting Dates**

Board	General
May 4	Apr 21
Jun Social: to be announced	May 19
Jul 10: Annual Grinding Party	Aug 31 (Sep)
Aug Social: to be announced	Oct 5
Oct 5	Oct 20
Nov 2	Nov 17
Nov 30 (Dec)	Dec 4

### BOARD MEETING

Gere Library, Meeting Room 1, 6:30 p.m.  
 May Meeting: May 4, 2011

The purpose of this corporation shall be to study, promote an interest in, and disseminate knowledge of lapidary and various Earth Sciences including but not necessarily limited to Geology, Paleontology and Mineralogy. It shall be a particular purpose of the corporation to provide education in these fields to its members and the general public, especially to youth and student groups.

The purpose of this corporation shall be to study, promote an interest in, and disseminate knowledge of lapidary and various Earth Sciences including but not necessarily limited to Geology, Paleontology and Mineralogy. It shall be a particular purpose of the corporation to provide education in these fields to its members and the general public, especially to youth and student groups.





# PICK & SHOVEL

Lincoln Gem & Mineral Club, Inc. Lincoln, Nebraska  
[www.lincolngemmineralclub.org](http://www.lincolngemmineralclub.org)



Volume 53, Issue 9  
May 2011

## BOARD OF DIRECTORS

**President**  
Richard Peterson, 402-489-2996  
rpd120@yahoo.com

**1<sup>st</sup> Vice-President**  
Aulden Stewart, 402-483-1044  
mmstewart@nebbraska.com

**2<sup>nd</sup> Vice-President**  
Ed Dvorak, 402-946-3041  
ed20649@windstream.net

**Treasurer**  
Vera Lyman, 402-464-6089

**Secretary**  
Sharon Marburger, 402-792-2348  
lmgsecretary@yahoo.com

**Board Member**  
Robert Cropp, 402-465-8432  
rowdver@hotmail.com

**Board Member**  
James Marburger, 402-792-2348,  
jm24122@windstream.net

**Board Member**  
Edward Ridge, 402-477-8469

**Board Member**  
Charles Wooldridge, 402-416-3233  
charles.wooldridge@nebbraska.gov

## GENERAL MEETINGS / ACTIVITIES

Regular monthly meetings are held at 7:00 p.m. at the Bethany Park Shelter House on the third Thursday of the month: Sep., Oct., Nov., Feb., Mar., Apr., and May; the second Sunday in December; and the fourth Saturday in January. Youth activities begin at 6:30 p.m. on the same dates. Summer meetings and other activities will be announced as they are planned.

### 2011 Meeting Dates

Board	General
May 19	May 19

Jun Social: Pittards' Residence (details next month)

Jul 10: Annual Grinding Party & Picnic in the Park

Aug Social: Wooly's Home

Aug 31 (Sep) Sep 15

Oct 5 Oct 20

Nov 2 Nov 17

Nov 30 (Dec) Dec 4

**General Meeting**  
May 19, 2011  
7:00 p.m.  
Program: "German Agates"

**Pebble Pups**  
May 19, 2011  
Meeting at 6:30 p.m.  
"Copper"

**Monthly Rock Party**  
May 21, 2011  
6:00 p.m.  
Hosted by Steve May  
16300 Hickman Ridge Rd.  
Roca, NE  
(see inside for directions)

## BOARD MEETING

Summer break.  
Next meeting: August 31, 2011 (September meeting)

The purpose of this corporation shall be to study, promote an interest in, and disseminate knowledge of lapidary and various Earth Sciences including but not necessarily limited to Geology, Paleontology and Mineralogy. It shall be a particular purpose of the corporation to provide education in these fields to its members and the general public, especially to youth and student groups.



# PICK & SHOVEL

Lincoln Gem & Mineral Club, Inc. Lincoln, Nebraska  
[www.lincolngemmineralclub.org](http://www.lincolngemmineralclub.org)



Volume 53, Issue 10  
June 2011

## BOARD OF DIRECTORS

**President**  
Richard Peterson, 402-489-2996  
rpd120@yahoo.com

**1<sup>st</sup> Vice-President**  
Aulden Stewart, 402-483-1044  
mmstewart@nebbraska.com

**2<sup>nd</sup> Vice-President**  
Ed Dvorak, 402-946-3041  
ed20649@windstream.net

**Treasurer**  
Vera Lyman, 402-464-6089

**Secretary**  
Sharon Marburger, 402-792-2348  
lmgsecretary@yahoo.com

**Board Member**  
Robert Cropp, 402-465-8432  
rowdver@hotmail.com

**Board Member**  
James Marburger, 402-792-2348,  
jm24122@windstream.net

**Board Member**  
Edward Ridge, 402-477-8469

**Board Member**  
Charles Wooldridge, 402-416-3233  
charles.wooldridge@nebbraska.gov

## GENERAL MEETINGS / ACTIVITIES

Regular monthly meetings are held at 7:00 p.m. at the Bethany Park Shelter House on the third Thursday of the month: Sep., Oct., Nov., Feb., Mar., Apr., and May; the second Sunday in December; and the fourth Saturday in January. Youth activities begin at 6:30 p.m. on the same dates. Summer meetings and other activities will be announced as they are planned.

### 2011 Meeting Dates

Board	General
Jun 25	Rock Party at Pittards' Residence in Geneva (details inside)

Jul 10: Annual Grinding Party & Picnic in the Park

Aug Social: Wooly's Home

Aug 31 (Sep) Sep 15

Oct 5 Oct 20

Nov 2 Nov 17

Nov 30 (Dec) Dec 4

**General Meeting**  
September 15, 2011  
7:00 p.m.  
Program: NYD

**Pebble Pups**  
September 15, 2011  
Meeting at 6:30 p.m.  
"Amethyst"

**Monthly Rock Party**  
June 25, 2011  
2:00 p.m.  
Hosted by Roger & Mary Pittard  
1013 Road K  
Geneva, NE  
(see inside for directions)

## BOARD MEETING

Summer break.  
Next meeting: August 31, 2011 (September meeting)

The purpose of this corporation shall be to study, promote an interest in, and disseminate knowledge of lapidary and various Earth Sciences including but not necessarily limited to Geology, Paleontology and Mineralogy. It shall be a particular purpose of the corporation to provide education in these fields to its members and the general public, especially to youth and student groups.



# PICK & SHOVEL

Lincoln Gem & Mineral Club, Inc. Lincoln, Nebraska  
[www.lincolngemmineralclub.org](http://www.lincolngemmineralclub.org)



Volume 53, Issue 11  
July 2011

## BOARD OF DIRECTORS

**President**  
Richard Peterson, 402-489-2996  
rpd120@yahoo.com

**1<sup>st</sup> Vice-President**  
Aulden Stewart, 402-483-1044  
mmstewart@nebbraska.com

**2<sup>nd</sup> Vice-President**  
Ed Dvorak, 402-946-3041  
ed20649@windstream.net

**Treasurer**  
Vera Lyman, 402-464-6089

**Secretary**  
Sharon Marburger, 402-792-2348  
lmgsecretary@yahoo.com

**Board Member**  
Robert Cropp, 402-465-8432  
rowdver@hotmail.com

**Board Member**  
James Marburger, 402-792-2348,  
jm24122@windstream.net

**Board Member**  
Edward Ridge, 402-477-8469

**Board Member**  
Charles Wooldridge, 402-416-3233  
charles.wooldridge@nebbraska.gov

## GENERAL MEETINGS / ACTIVITIES

Regular monthly meetings are held at 7:00 p.m. at the Bethany Park Shelter House on the third Thursday of the month: Sep., Oct., Nov., Feb., Mar., Apr., and May; the second Sunday in December; and the fourth Saturday in January. Youth activities begin at 6:30 p.m. on the same dates. Summer meetings and other activities will be announced as they are planned.

### 2011 Meeting Dates

Board	General
Jul 10	Annual Grinding Party & Picnic in the Park

Aug Social: Wooly's Home

Aug 31 (Sep) Sep 15

Oct 5 Oct 20

Nov 2 Nov 17

Nov 30 (Dec) Dec 4

**General Meeting**  
September 15, 2011  
7:00 p.m.  
Program: NYD

**Pebble Pups**  
September 15, 2011  
Meeting at 6:30 p.m.  
"Amethyst"

**Monthly Rock Party**  
July 10, 2011  
4:00 p.m.  
"Picnic in the Park"  
Pioneers Park  
(following the annual Grinding Party)

## BOARD MEETING

Summer break.  
Next meeting: August 31, 2011 (September meeting)

The purpose of this corporation shall be to study, promote an interest in, and disseminate knowledge of lapidary and various Earth Sciences including but not necessarily limited to Geology, Paleontology and Mineralogy. It shall be a particular purpose of the corporation to provide education in these fields to its members and the general public, especially to youth and student groups.



# PICK & SHOVEL

Lincoln Gem & Mineral Club, Inc. Lincoln, Nebraska  
[www.lincolngemmineralclub.org](http://www.lincolngemmineralclub.org)



Volume 53, Issue 12  
August 2011

## BOARD OF DIRECTORS

**President**  
Richard Peterson, 402-489-2996  
rpd120@yahoo.com

**1<sup>st</sup> Vice-President**  
Aulden Stewart, 402-483-1044  
mmstewart@nebbraska.com

**2<sup>nd</sup> Vice-President**  
Ed Dvorak, 402-946-3041  
ed20649@windstream.net

**Treasurer**  
Vera Lyman, 402-464-6089

**Secretary**  
Sharon Marburger, 402-792-2348  
lmgsecretary@yahoo.com

**Board Member**  
Robert Cropp, 402-465-8432  
rowdver@hotmail.com

**Board Member**  
James Marburger, 402-792-2348,  
jm24122@windstream.net

**Board Member**  
Edward Ridge, 402-477-8469

**Board Member**  
Charles Wooldridge, 402-416-3233  
charles.wooldridge@nebbraska.gov

## GENERAL MEETINGS / ACTIVITIES

Regular monthly meetings are held at 7:00 p.m. at the Bethany Park Shelter House on the third Thursday of the month: Sep., Oct., Nov., Feb., Mar., Apr., and May; the second Sunday in December; and the fourth Saturday in January. Youth activities begin at 6:30 p.m. on the same dates. Summer meetings and other activities will be announced as they are planned.

### 2011 Meeting Dates

Board	General
Aug 31 (Sep)	Sep 15

Oct 5 Oct 20

Nov 2 Nov 17

Nov 30 (Dec) Dec 4

**General Meeting**  
September 15, 2011  
7:00 p.m.  
Program: NYD

**Mineral Monkeys**  
September 15, 2011  
Meeting at 6:30 p.m.  
"Amethyst"

**Monthly Rock Party**  
August 7, 2011  
5:00 p.m.  
Details inside

## BOARD MEETING

Summer break.  
Next meeting: August 31, 2011 (September meeting)

The purpose of this corporation shall be to study, promote an interest in, and disseminate knowledge of lapidary and various Earth Sciences including but not necessarily limited to Geology, Paleontology and Mineralogy. It shall be a particular purpose of the corporation to provide education in these fields to its members and the general public, especially to youth and student groups.





# PICK & SHOVEL

Lincoln Gem & Mineral Club, Inc. Lincoln, Nebraska  
[www.lincolngemmineralclub.org](http://www.lincolngemmineralclub.org)

**BOARD OF DIRECTORS**

**President**  
Richard Peterson, 402-489-2996  
rpd120@yahoo.com

**1<sup>st</sup> Vice-President**  
Aulden Stewart, 402-483-1044  
mmstewart@inebraska.com

**2<sup>nd</sup> Vice-President**  
Ed Dvorak, 402-946-3041  
ed20649@windstream.net

**Treasurer**  
Vera Lyman, 402-464-6089

**Secretary**  
Sharon Marburger, 402-792-2348  
lgmsecretary@yahoo.com

**Board Member**  
Robert Cropp, 402-465-8432  
rowdyer@hotmail.com

**Board Member**  
James Marburger, 402-792-2348,  
jm24122@windstream.net

**Board Member**  
Edward Ridge, 402-477-8469

**Board Member**  
Charles Woodridge, 402-416-3233  
charles.woolridge@nebraska.gov

Volume 54, Issue 1  
September 2011

**GENERAL MEETINGS / ACTIVITIES**

Regular monthly meetings are held at 7:00 p.m. at the Bethany Park Shelter House on the third Thursday of the month: Sep., Oct., Nov., Feb., Mar., Apr., and May; the second Sunday in December; and the fourth Saturday in January. Youth activities begin at 6:30 p.m. on the same dates. Summer meetings and other activities will be announced as they are planned.

2011 Meeting Dates		General Meeting
Board	General	September 15, 2011 7:00 p.m.
Sep 15		<b>Program: China: A Geologist's Perspective by Dr. Robert Diffendal</b>  <b>Mineral Monkeys</b> September 15, 2011 Meeting at 6:30 p.m. ~Amethyst~
Oct 5	Oct 20	
Nov 2	Nov 17	
Nov 30 (Dec)	Dec 4	

**Monthly Rock Party**  
September 17, 2011  
5:30 p.m.  
Details inside

The purpose of this corporation shall be to study, promote an interest in, and disseminate knowledge of lapidary and various Earth Sciences including but not necessarily limited to Geology, Paleontology and Mineralogy. It shall be a particular purpose of the corporation to provide education in these fields to its members and the general public, especially to youth and student groups.



# PICK & SHOVEL

Lincoln Gem & Mineral Club, Inc. Lincoln, Nebraska  
[www.lincolngemmineralclub.org](http://www.lincolngemmineralclub.org)

Volume 54, Issue 2  
October 2011

**BOARD OF DIRECTORS**

**President**  
Richard Peterson, 402-489-2996  
rpd120@yahoo.com

**1<sup>st</sup> Vice-President**  
Aulden Stewart, 402-483-1044  
mmstewart@inebraska.com

**2<sup>nd</sup> Vice-President**  
Ed Dvorak, 402-946-3041  
ed20649@windstream.net

**Treasurer**  
Vera Lyman, 402-464-6089

**Secretary**  
Sharon Marburger, 402-792-2348  
lgmsecretary@yahoo.com

**Board Member**  
Robert Cropp, 402-465-8432  
rowdyer@hotmail.com

**Board Member**  
James Marburger, 402-792-2348,  
jm24122@windstream.net

**Board Member**  
Edward Ridge, 402-477-8469

**Board Member**  
Charles Woodridge, 402-416-3233  
charles.woolridge@nebraska.gov

**GENERAL MEETINGS / ACTIVITIES**

Regular monthly meetings are held at 7:00 p.m. at the Bethany Park Shelter House on the third Thursday of the month: Sep., Oct., Nov., Feb., Mar., Apr., and May; the second Sunday in December; and the fourth Saturday in January. Youth activities begin at 6:30 p.m. on the same dates. Summer meetings and other activities will be announced as they are planned.

Calendar of 2011 Meeting Dates		October General Meeting
Board	General	October 20, 2011 7:00 p.m.
Nov 2	Nov 17	<b>Program:</b> Andrew Tiedje will present a slide presentation and talk of the August field trip to the Jessieville, Arkansas area. Field trip participants are asked to bring some specimens found on the trip.
Nov 30 (Dec)	Dec 4	

**Monthly Rock Party**  
October 21, 2011  
5:30 p.m.  
Details inside

**Mineral Monkeys**  
October 20, 2011  
6:00 p.m.  
Activity: Basic lesson in rocks and minerals (for scouts to earn Geology badge and Monkeys to earn FRA badge).

**Show Committee Meeting**  
October 18, 2011  
6:30 p.m.  
Lyman Residence

**Halloween Meeting**  
Come dressed as a hobby-related item.  
Be creative and have fun!

The purpose of this corporation shall be to study, promote an interest in, and disseminate knowledge of lapidary and various Earth Sciences including but not necessarily limited to Geology, Paleontology and Mineralogy. It shall be a particular purpose of the corporation to provide education in these fields to its members and the general public, especially to youth and student groups.



# PICK & SHOVEL

Lincoln Gem & Mineral Club, Inc. Lincoln, Nebraska  
[www.lincolngemmineralclub.org](http://www.lincolngemmineralclub.org)

**BOARD OF DIRECTORS**

**President**  
Richard Peterson, 402-489-2996  
rpd120@yahoo.com

**1<sup>st</sup> Vice-President**  
Aulden Stewart, 402-483-1044  
mmstewart@inebraska.com

**2<sup>nd</sup> Vice-President**  
Ed Dvorak, 402-946-3041  
ed20649@windstream.net

**Treasurer**  
Vera Lyman, 402-464-6089

**Secretary**  
Sharon Marburger, 402-792-2348  
lgmsecretary@yahoo.com

**Board Member**  
Robert Cropp, 402-465-8432  
rowdyer@hotmail.com

**Board Member**  
James Marburger, 402-792-2348,  
jm24122@windstream.net

**Board Member**  
Edward Ridge, 402-477-8469

**Board Member**  
Charles Woodridge, 402-416-3233  
charles.woolridge@nebraska.gov

Volume 54, Issue 3  
November 2011

**GENERAL MEETINGS / ACTIVITIES**

Regular monthly meetings are held at 7:00 p.m. at the Bethany Park Shelter House on the third Thursday of the month: Sep., Oct., Nov., Feb., Mar., Apr., and May; the second Sunday in December; and the fourth Saturday in January. Youth activities begin at 6:30 p.m. on the same dates. Summer meetings and other activities will be announced as they are planned.

Calendar of 2011 Meeting Dates		November General Meeting
Board	General	November 17, 2011 7:00 p.m.
Nov 30 (Dec)	Dec 4	<b>Program:</b> No program planned due to special youth event and elections.

**Monthly Rock Party**  
November 13, 2011  
5:00 p.m.  
Details on page 8

**Mineral Monkeys**  
November 17, 2011  
6:00 p.m.  
Activity: Basic lesson in rocks and minerals (for scouts to earn Geology badge and Monkeys to earn FRA badge).

**Field Trip to Barnes, KS**  
November 12, 2011  
Details on page 2.

The purpose of this corporation shall be to study, promote an interest in, and disseminate knowledge of lapidary and various Earth Sciences including but not necessarily limited to Geology, Paleontology and Mineralogy. It shall be a particular purpose of the corporation to provide education in these fields to its members and the general public, especially to youth and student groups.



# PICK & SHOVEL

Lincoln Gem & Mineral Club, Inc. Lincoln, Nebraska  
[www.lincolngemmineralclub.org](http://www.lincolngemmineralclub.org)

**BOARD OF DIRECTORS**

**President**  
Richard Peterson, 402-489-2996  
rpd120@yahoo.com

**1<sup>st</sup> Vice-President**  
Aulden Stewart, 402-483-1044  
mmstewart@inebraska.com

**2<sup>nd</sup> Vice-President**  
Ed Dvorak, 402-946-3041  
ed20649@windstream.net

**Treasurer**  
Vera Lyman, 402-464-6089

**Secretary**  
Sharon Marburger, 402-792-2348  
lgmsecretary@yahoo.com

**Board Member**  
Robert Cropp, 402-465-8432  
rowdyer@hotmail.com

**Board Member**  
James Marburger, 402-792-2348,  
jm24122@windstream.net

**Board Member**  
Edward Ridge, 402-477-8469

**Board Member**  
Charles Woodridge, 402-416-3233  
charles.woolridge@nebraska.gov

**UPCOMING EVENTS**

Regular monthly meetings are held at 7:00 p.m. at the Bethany Park Shelter House on the third Thursday of the month: Sep., Oct., Nov., Feb., Mar., Apr., and May; the first Sunday in December; and the fourth Saturday in January. Youth activities begin at 6:30 p.m. on the same dates. Summer meetings and other activities will be announced as they are planned.

Calendar of 2011 Meeting Dates		December General Meeting
Board	General	Christmas Party December 4, 2011 5:00 p.m.
Nov 30 (Dec)	Dec 4	<b>Potluck Supper - Club will furnish fried chicken and beverages. Members bring two side dishes (hot &amp; cold) Rock Bingo Gift Exchange See details in Minutes on p. 4.</b>

**Monthly Rock Party**  
December 10, 2011  
5:00 p.m.  
Jim & Sharon Marburger, Hosts  
Details on page 2.

**Merry Christmas!**

**Mid-Winter Rock Swap**  
January 28, 2012, 1:00 - 5:00 p.m.  
Bethany Park Shelter House  
Pizza Supper at 5:45 p.m.  
General Meeting follows at 7:00 p.m.  
No Mineral Monkey activity planned.

THE PURPOSE OF THIS CORPORATION SHALL BE TO STUDY, PROMOTE AN INTEREST IN, AND DISSEMINATE KNOWLEDGE OF LAPIDARY AND VARIOUS EARTH SCIENCES INCLUDING BUT NOT NECESSARILY LIMITED TO GEOLOGY, PALEONTOLOGY AND MINERALOGY. IT SHALL BE A PARTICULAR PURPOSE OF THE CORPORATION TO PROVIDE EDUCATION IN THESE FIELDS TO ITS MEMBERS AND THE GENERAL PUBLIC, ESPECIALLY TO YOUTH AND STUDENT GROUPS.



Section

3c

LINCOLN GEM & MINERAL CLUB'S  
**32<sup>ND</sup> ANNUAL ROCK SWAP**

JANUARY 22, 2011 1:00<sup>PM</sup> - 5:00<sup>PM</sup>



**BETHANY PARK SHELTER**  
64TH & VINE STREET LINCOLN, NEBRASKA

**FREE ADMISSION**  
**BUY - SELL - TRADE - ROCKS - MINERALS -**  
**FOSSILS - JEWELRY - EQUIPMENT**

CASH SALES MUST BE COMPLETED USING SWAPPER DOLLARS. SWAPPER DOLLARS ARE AVAILABLE FROM THE CLUB TREASURER AT A 10% SURCHARGE, PAYABLE BY THE BUYER.

LINCOLN GEM & MINERAL CLUB BOX 5342 LINCOLN NE 68505-0342  
CONTACT RICHARD PETERSON (402) 489-2996



Section

3d



Lincoln Gem and Mineral Club's  
53<sup>rd</sup> Annual Gem and Mineral Show



*“Wonders of the Earth”*

held in conjunction with the  
Nebraska Association of Earth Sciences Clubs' Annual Show

April 2 & 3, 2011

Saturday,  
April 2

9:00 - 6:00

Lancaster Event Center  
84th and Havelock  
Lincoln, Nebraska

Sunday,  
April 3

10:00 - 5:00

**Featuring Dealers, Gemstones, Minerals,  
Agates, Fossils, Jasper, Petrified Wood,  
Jewelry, Beads, Gem and Jewelry Making  
Equipment and Supplies, Demonstrations,  
Educational Programs, Rough and Uncut  
Gems, Children's Activities, and much  
more.**

*Fun for the whole family*

**Free  
Parking!**

Admission:  
\$5 per adult  
children 11 and under free with paid adult  
\$9 for a 2-day pass  
Bring this coupon for \$1 off admission for  
each adult in party

**Free  
Parking!**





## **SECTION 4 – SUPPORT FOR REGIONAL FEDERATION, AFMS, AND OTHER CLUBS**

### **INDEX**

Section 4a	Members serving MWF, AFMS, or other clubs
Section 4b	Members attended other club shows, swaps, etc.
Section 4c	Joint Field Trip with other club
Section 4d	Members displayed/demonstrated at other club shows
Section 4e	Exchange Bulletins



**Section**

**4a**

**SECTION 4a – SUPPORT FOR REGIONAL FEDERATION, AFMS, AND OTHER CLUBS**

1. Members serving as Midwest Federation Officers, Committee Chairs or committee members:
  - a. Membership Chairman - James Marburger
  - b. Newsletter Editor - Sharon Marburger
  - c. Nebraska State Director - Charles Wooldridge
  
2. Members serving other clubs:
  - a. Jim Null served as President for the Nebraska Mineral and Gem Club (Omaha).





Jim & Sharon Marburger attend the MWF Convention and Show in Toledo, Ohio



**Section**

**4b**

**SECTION 4 – SUPPORT FOR REGIONAL FEDERATIONS, AFMS AND OTHER CLUBS - MEMBERS  
ATTENDED OTHER CLUB SHOWS, SWAPS, ETC.**

**Columbus, NE Swap**

Robert and Judy Cropp                      Maintained a booth

**Omaha, NE Swap**

Robert and Judy Cropp                      Maintained a booth

Charles Wooldridge

Ed & Pat Dvorak

Richard Peterson

**Crawford, NE Show**

Brad Nielsen                                      Maintained a booth                      Fossil prep

**Omaha, NE Show**

Robert and Judy Cropp                                                                                      Demonstrated rock tumbling and vibrating Laps

**Kansas City Show**

Robert and Judy Cropp



**Section**

**4c**

# Field Trips—BARNES, KANSAS

## November 12, 2011

6

Pick & Shovel

### FIELD TRIP

By Jim Marburger

The club was invited to go to a gravel pit near Barnes, Kansas on November 12. The group met at the Pony Express Truck Stop on Highway 36. From there, we traveled to the Finlayson Sand and Gravel Quarry for a day of fun and collecting.

Those in attendance were Richard Peterson; Charles Wooldridge; Andrew Tiedje; Brian, Jayne, and Corey Beer; Susy McMahan; Ed Ridge; Terry and Leahh Anderson; Wendy Braden; Mark Awakuni-Swetland; Dan Cromer; and Sharon and me. Three members of the North Central Kansas Rock Club attended, also.

Martin Weber, the current caretaker/owner of the quarry was an informative and likeable fellow. He told of the history of the property and gave an entertaining talk about how the property was mined in its day. It was amazing to us all that a powerful stream of water was used to take down a hill - that hill being more than a quarter mile in length.

Dan Cromer found an excellent fossilized specimen, which was probably the best find of the day. I hope Dan shares a picture of the piece, or brings it to a meeting to show.

Mr. Weber also contacted a neighbor and received permission for us to collect at his sand and gravel quarry.

I was not feeling well so Sharon and I left early. We are sorry that we missed out on collecting at the second quarry and the Little Blue River. The reports coming back to me indicate that everyone had a lot of fun.



Three photos courtesy of Sharon Marburger



Three photos courtesy of Ed Ridge



**Section**

**4d**





**Section**

**4e**

**SECTION 4e– SUPPORT FOR REGIONAL FEDERATION, AFMS, AND OTHER CLUBS - EXCHANGE BULLETINS**

CALIFORNIA

Long Beach: Long Beach Mineral & Gem Society, “Pick & Shovel”  
San Diego: San Diego Mineral & Gem Society, “Pegmatite”

ILLINOIS

Chicago: Chicago Rocks & Mineral Society, “Pick & Dop Stick”  
Elmhurst: West Suburban Lapidary Club, “The Opal”

INDIANA

South Bend: Michiana Gem & Mineral Society, “Rockfinder”

IOWA

Marvin: Cedar Valley Rock & Mineral Society, “Cedar Valley Gems”

KANSAS

Topeka: Topeka Gem & Mineral Society, “Glacial Drifter”  
Wichita: Wichita Gem & Mineral Society, “Quarry Quips”

MICHIGAN

Redford: Michigan Mineralogical Society, “Conglomerate”

MINNESOTA

Barnum: Carleton County Gem & Mineral Club, “Agate Picker”

MISSOURI

Independence: Show Me Rockhounds  
Independence: Independence Gem & Mineral Society, “The Gemrock”

TEXAS

Katy: Houston Gem & Mineral Society, “Back Benders’ Gazette”

WISCONSIN

Jamesville: Badger Lapidary and Geological Society, “Badger Diggin’s”  
Wauwatosa: Wisconsin Geological Society, Inc., “The Trilobite”



BOOK - Section 5-2011  
YEARBOOK - Section 5-2011  
CLUB YEARBOOK - Section 5-2011 ALL AMERIC  
CAN CLUB YEARBOOK - Section 5-2011 ALL AMERIC  
AMERICAN CLUB YEARBOOK - Section 5-2011 ALL AMERIC  
ALL AMERICAN CLUB YEARBOOK - Section 5-2011 ALL AMERIC  
AMERICAN CLUB YEARBOOK - Section 5-2011 ALL AMERIC  
CLUB YEARBOOK - Section 5-2011 ALL AMERIC  
YEARBOOK - Section 5-2011 ALL AMERIC

## SECTION 5 - COMMUNITY RELATIONS

### INDEX

- Section 5a           Members gave talks or demonstrations at local schools
- Section 5b           Members gave talks or demonstrations to local groups
- Section 5c           Members maintained a booth, or an activity, at a local event
- Section 5d           Members donated materials to school, nursing home, etc.
- Specimen donations were collected for Lincoln Public Schools, however, the devastating fire at its District Offices, resulting in complete destruction, precluded LGMC from delivering the donations. Lincoln Public Schools requested that we hold the specimens until which time they are able to accept them.
- Section 5e           Members active in local affairs

Section

5a



# Community Relations - Presentation to 3rd Graders March 2, 2011

10

Pick & Shovel

## 2011 ALL AMERICAN

Many, many thanks to Pat Dvorak for submitting an article and pictures for a presentation given to school children. She delivered the information on the same day she did the presentation!!

As Pat can attest, it is much easier to supply to Sharon Marburger the information for the next All American Club Award Application as the events happen. If you do any presentations, programs, take pictures at club events, or anything else to benefit the club, please provide copies to Sharon to include in the application. Additionally, the application can be compiled as we go through the year, rather than waiting until the last minute. Not to mention you will receive Sharon's undying appreciation!

The third graders and Mrs. Nerud of Dorchester Public School enjoyed a hands-on display presented by LGMC member Pat Dvorak on March 2, 2011. The highlight of the display was the dinosaur "poop", followed closely by the fish fossil found in Wyoming. Mrs. Nerud hopes that the students remember more than the "poop" from third grade.

Volume 53, Issue 7: March 2011



Photos courtesy of Pat Dvorak



Section

5b



### SCOUT REQUESTS

Scout Pack 51 has requested LGMC provide a presentation at one of their pack meetings. It would be a short demonstration by club members about the hobby. Please contact Wooly if you would be interested in presenting. This is a great opportunity to promote interest in the hobby. The youth are our future.

### SCOUT REQUESTS

Webelos in Louisville, Nebraska have requested assistance in order to meet their Geology Badge requirements before November 19. They must complete 5 projects to earn the badge. Jim Marburger will provide details and offer suggestions of how we can help, at the September meeting. There is a lot of talent in our members and everyone is invited to assist. Who knows? We may recruit some new Mineral Monkeys! Your thoughts and ideas are important; bring them to the meeting and share.

## SPECIAL SCOUT (WEBELOS) ACTIVITY

By Jim Marburger

The Webelos Scout den from Louisville, Nebraska is planning, at this time, to attend our November 17 meeting at 6 p.m. We will present activities and a program so they can fulfill the requirements to obtain their geology badge. The event was advertised as happening at the October meeting, but the Louisville Webelos are unable to attend. We will provide the program in October, just in case other dens show up. This project might develop into one that we can use at the show for larger groups of scouts.

I will have most of the materials needed for this activity, but will need help presenting it. The presentation should take no longer than an hour. The following requirements are needed for the geology badge.

1. Collect five geologic specimens that have important uses.
2. Rocks and minerals are used in metals, glass, jewelry, road-building products, and fertilizer. Give examples of the minerals used in these products.
3. Make a scale of mineral hardness for objects found at home. Show how to use the scale by finding the relative hardness of three samples.

4. List some of the geologic materials used in building your home.
5. Make a drawing that shows the cause of a volcano, a geyser, or an earthquake.
6. Explain one way in which mountains are formed. (Wooly has volunteered to handle this.)
7. Describe what a fossil is. How is it used to tell how old a formation is? Find two examples of fossils in your area.
8. Take a field trip to a geological site, geological laboratory, or a rock show. Discuss what you learned at your next Webelos den meeting.

If you would like to help with the presentations or have any egg cartons to donate, please let me know, and plan to be at the Bethany Park Shelter House just prior to 6:00 p.m., both October 20 and November 17.

Geology Badge





### SPECIAL SCOUT (WEBELOS) ACTIVITY

By Jim Marburger

The Webelos Scout den from Louisville, Nebraska is planning to attend our November 17 meeting at 6 p.m. We will present activities and a program so they can fulfill the requirements to obtain their geology badge. This project might develop into one that we can use at the show for larger groups of scouts.

I will have most of the materials needed for this activity, but will need help presenting it. The presentation should take no longer than an hour. The following requirements are needed for the geology badge.

1. Collect five geologic specimens that have important uses.
2. Rocks and minerals are used in metals, glass, jewelry, road-building products, and fertilizer. Give examples of the minerals used in these products.
3. Make a scale of mineral hardness for objects found at home. Show how to use the scale by finding the relative hardness of three samples.
4. List some of the geologic materials used in building your home.
5. Make a drawing that shows the cause of a volcano, a geyser, or an earthquake.
6. Explain one way in which mountains are formed. (Wooly has volunteered to handle this.)
7. Describe what a fossil is. How is it used to tell how old a formation is? Find two examples of fossils in your area.
8. Take a field trip to a geological site, geological laboratory, or a rock show. Discuss what you learned at your next Webelos den meeting.

If you would like to help with the presentations or have any egg cartons to donate, please let me know, and plan to be at the Bethany Park Shelter House just prior to 6:00 p.m.

Geology Badge



As a reminder to the Mineral Monkeys, you may participate in this activity to earn some of your Future Rockhounds of America badges. The meeting starts a half hour earlier than usual. Be there at 6:00!!

### Silversmithing classes

The Jewelry Connection Ltd.  
Indian Village Shopping Ctr.  
13th & Arapahoe, Lincoln

**Tuesdays**

**October 11, 2011**

**thru**

**November 29, 2011**

**7:00 p.m. - 10:00 p.m.**

**Tuition: \$100 plus \$25 supply deposit**

**Contact:**

**Jayne Beer 402-890-3307**

**Judith Bay 402-423-7058**

**or e-mail**

**jbeer60070@aol.com**

### LOUISVILLE WEBELOS

by Jim Marburger

The Louisville Webelos visited the November general meeting to participate in a lesson in order to earn their Geology Badge. Six Webelos, one scout's older brother, the leader and three parents arrived, full of energy and expectations.

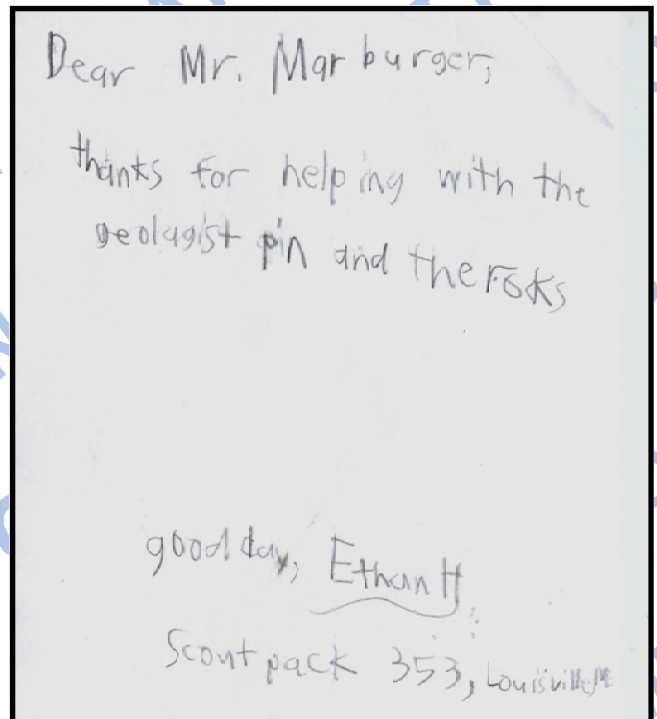
Wooly and I presented the program to the youths. We provided five geological specimens of metals, glass, road building, and fertilizer and shared in an animated discussion. Three fossils were given to each child, and a multitude of other specimens were given to the scouts by Wooly and Ed Ridge.

The scouts made a Mohs Hardness Scale and learned how to use it. They received several handouts which included a list of materials used to build a house, minerals in our environment, a USGS description of minerals and how to identify them, and a "Baby Handout" listing the amounts of minerals a person would use in an average lifetime.

The group identified the various parts of a volcano, which continued the lively discussion. We discussed how mountains are formed, using two telephone books for a visual example, and the boys told me about earthquakes, faults, and tectonic plates.

We covered nine topics, four more than the requisite five. The group was thrilled with the clear egg cartons provided to hold their specimens, and everything was labeled.

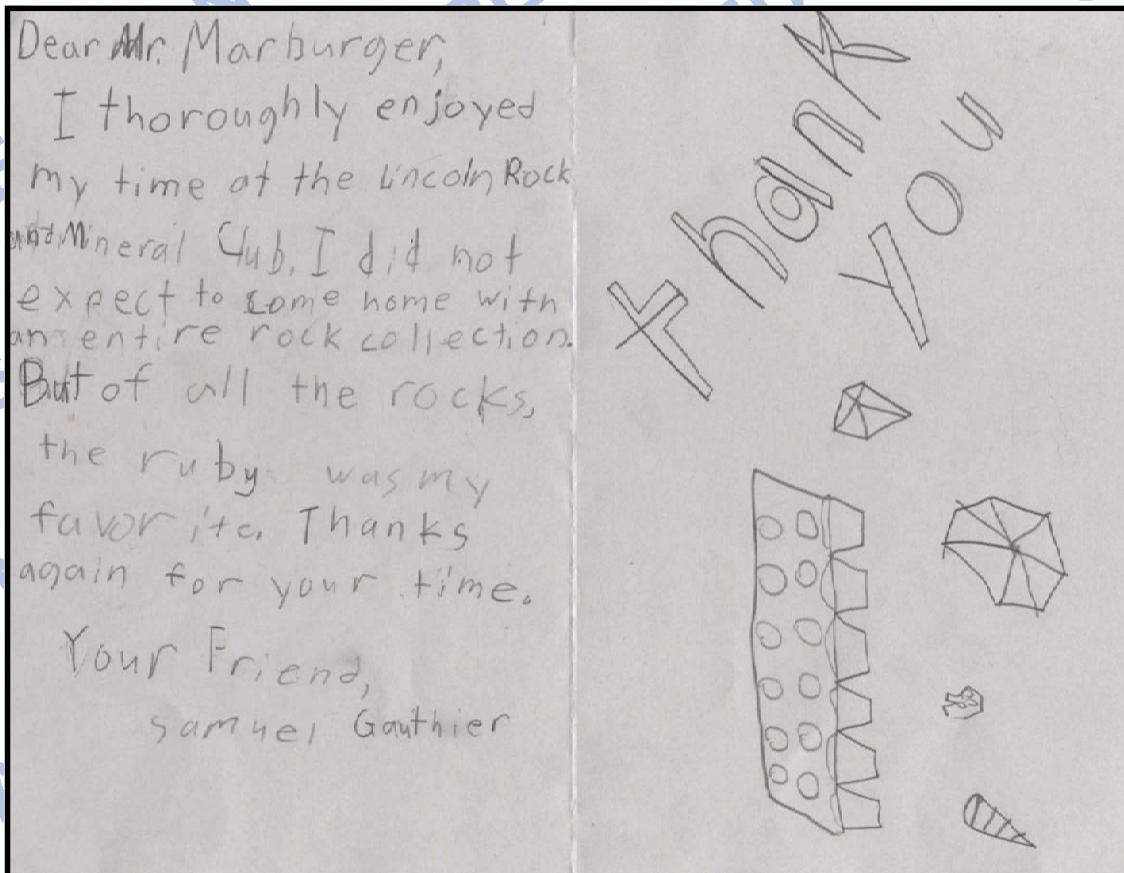
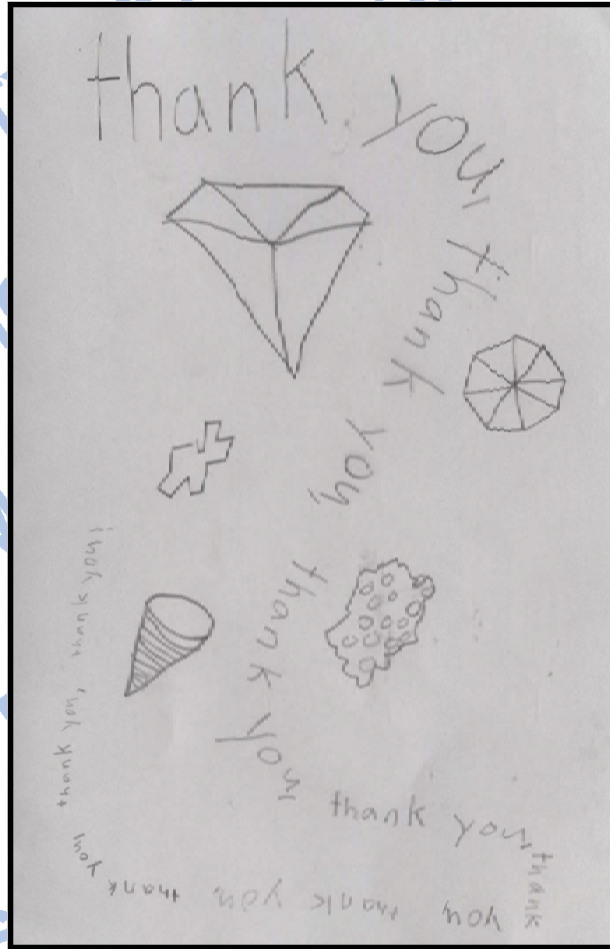
The adults expressed appreciation to the club and thought the lesson was great.





Community Relations - Scouts

November 17, 2011





Section

5c

# Geology Day February 13, 2011



## Lincoln Parks & Recreation Nature Center

### Pioneers Park Nature Center



**Location:**  
1201 South Coddington  
Lincoln, NE 68522

West end of Pioneers Park, West Van Horn and South Coddington  
p 402 441 7895

**Mailing Address:**  
2740 "A" Street  
Lincoln, NE 68502

**Hours:**  
Monday-Saturday: 8:30a-5p  
Sunday: Noon-5p

**The Nature Center will be closed Christmas and New Year's Days**

**REGISTRATION**  
Reservations may be made by phone or mail. Payment must be made at the time of registration. Call 441-7895 to register and pay by credit card or check. Registration forms can be downloaded from the Nature Center webpage and sent with payment to: Pioneers Park Nature Center, 2740 "A" Street, Lincoln NE 68502.

**Refunds:** Refund requests for classes must be made 72 hours prior to the program date and are subject to a \$5.00 service charge.

**Cancellations:** PPNC reserves the right to cancel classes. Participants will be notified prior to the programs they may choose to receive a full refund or sign up for another available program.

**FOR EVERYONE  
Geology Day**

Learn about fossils, minerals, rocks, and gemstones through displays and demonstrations by members of the Lincoln Gem and Mineral Club. They can also help you identify your own specimens during this free drop-in program.

**Date:** February 13, Sunday      **Time:** 1:00 - 4:00 p.m.  
**Location:** Chet Ager Building      **Fee:** Donation

**Full Moon Ramble**  
We'll walk in the moonlight, listen for nocturnal animals, tell stories, and have a lunar snack. Register by 2/16.  
**Date:** February 18, Friday      **Time:** 7:00 - 8:30 p.m.  
**Location:** Prairie Building      **Fee:** \$8/person

**Great Backyard Bird Count**  
Bundle up and join us for a 9:00 a.m. winter bird walk. Then meet with other birders at the Chet Ager Bldg. for hot mulled cider and a snack as we count the visitors in our bird garden. This data will be submitted to the biologists at the Cornell University Bird Lab for the 14th Annual Great Backyard Bird Count. The Wild Bird Habitat Series will be on hand to discuss how you can attract birds to your backyard and participate in GBBC's fun, four day free bird count. No registration is necessary for this drop-in program, but please call 441 7895 if you plan to attend the bird walk.  
**Date:** February 19, Saturday      **Time:** 9:00-11:30 a.m.  
**Location:** Chet Ager Building      **Fee:** \$5 suggested donation

### Sandhill Crane Trip

Experience one of our planet's most spectacular wildlife migrations. Visit the Nebraska Nature and Visitor Center, travel rural roads to see the cranes foraging and dancing in the fields then watch and listen to them return to the Platte River at sunset from a Rose Sanctuary blind. The fee includes transportation, dinner and blind visits. Must have the ability to walk uneven trails in low light with a guide. Space is limited. Registration and payment required by February 20 for blind reservations.  
**Date:** March 21, Monday      **Time:** 12:00 - 11:30 p.m.  
**Fee:** \$70/person

**FOR YOUTH**

**Christmas for the Birds**  
Make some Christmas treats for the birds to hang outside at home and discover some neat things about common birds that come to the Nature Center feeders in winter. Ages 4-7. Register by 12/8.  
**Date:** December 11, Saturday      **Time:** 10:00 - 11:30 a.m.  
**Location:** Chet Ager Building      **Fee:** \$8/child

**Preschool Nature Play**  
NEW series for preschoolers with an adult, each 1st Saturday. Explore the wonders of nature with your little one through hikes, activities, and stories. Dress for the weather, as we will be spending a portion of each session outside. A snack will be provided. Register by the Wednesday before each class.  
**Dates:** January 15: Snow, February 19: Birds in Winter  
**Time:** 10-11:30 a.m.  
**Location:** Prairie Building Goldenrod Classroom      **Fee:** \$7/child

**Nature Explorers Camp**  
**JUMP INTO SPRING!**  
**March 21-25, M-F**  
**8:00 a.m. - 5:00 p.m.**  
**6-12 year olds**

Hop into a world of discovery. We'll investigate the mysteries of migration and the first signs of green. The chorus frogs may even be calling. There will be magic spots, nature hikes and an exciting field trip. Finally, to celebrate our discoveries we'll have a fun family evening potluck.

**\$150, save \$10 if registered by February 21**  
**Call 441-7895 for a registration form**

December 2010 February, 2011      p 402 441-7895      parks.lincoln.ne.gov



President Richard Peterson describing how he discovered fossils in the Nemaha River



Charles Wooldridge keeps a young visitor enthralled with a collecting story



Ed Ridge & Brad Nielsen

**G20** Friday, February 11, 2011
**DINING/FAMILIES**
Lincoln Journal Star

**Family activities**

Sunday is Geology Day at Pioneers Park Nature Center. Visitors can learn all about fossils, minerals, rocks and gemstones through displays and demonstrations by members of the Lincoln Gem and Mineral Club. This drop-in program runs 1 to 4 p.m. at the Chet Ager Building.

**FAMILY CALENDARS**

**■ Sunday**

**Geology Day — 1-4 p.m.,** Pioneers Park Nature Center, Chet Ager Center. Bring your own fossils, minerals, rocks or gemstones for identification. Donations accepted.



Geology Day  
February 13, 2011



# PICK & SHOVEL

Lincoln Gem & Mineral Club, Inc.

Lincoln, Nebraska

[www.lincolngemmineralclub.org](http://www.lincolngemmineralclub.org)



Volume 53, Issue 6  
February 2011



Jayne Beer and son, Corey

## GENERAL MEETINGS / ACTIVITIES

Regular monthly meetings are held at 7:00 p.m. at the Bethany Park Shelter House on the third Thursday of the month: Sep., Oct., Nov., Feb., Mar., Apr., and May; the second Sunday in December; and the fourth Saturday in January. Youth activities begin at 6:30 p.m. on the same dates. Summer meetings and other activities will be announced as they are planned.

### 2011 Meeting Dates

<u>Board</u>	<u>General</u>
Mar 2	Mar 17
Mar 30 (Apr)	Apr 21
May 4	May 19
Jun Social: to be announced	
Jul 10: Annual Grinding Party	
Aug Social: to be announced	
Aug 31 (Sep)	Sep 15
Oct 5	Oct 20
Nov 2	Nov 17
Nov 30 (Dec)	Dec 4

Geology Day  
February 13, 2011  
1:00 - 4:00 p.m.

General Meeting  
February 17, 2011  
7:00 p.m.  
Program: "Yellowstone:  
Imprints of Geologic Time"

Pebble Pups  
February 17, 2011  
Meeting at 6:30 p.m.

Monthly Rock Party  
February 19, 2011  
Hosted by  
Charles Wooldridge



Room full of visitors



# Geology Day February 13, 2011

## Geology Day, February 13, 2011 - 1 to 4 P.M

Sponsored by Lincoln City Parks & Recreation Department at Pioneer Park Nature Center with Lincoln Gem & Mineral Club Members as Guest Hosts.

NAME	NUMBER IN GROUP	ADDRESS
David Howlker	03	1100 E. 8th, #1 Lincoln, NE 68502
Cindy Uttercut	7	
Carrie D. Burkner	1	2711 5th St Lincoln, NE 68502
Mark Hernandez	2	541 Driftwood Dr. 68510
Kessey Hamman	2	P.O. Box 154 Cortland, NE 68331
Ann Firtel	4	600 Conventino Ct. Lincoln, NE 68506
Kristina Dupsky	4	7810 Northshore Dr 68516
Sandra Rippeken	4	3801 Cape Charbon 68516
Bonny Claire Schwinck	4	6521 Blackstone Rd 68516
Sharon A. Lee	2	8301 Lincoln Blvd 68516
Juli Reiser	2	3085 S 41 Lincoln, NE 68506
Pat Kear	2	2712 T St., Lincoln 68503
Jesse Korus	4	1130 W. Clearwater Lincoln, NE 68521
Tina Symon	1	420 N 56 St Lincoln 68504
John Kessel	2	5310 S. 24th St 68522
Chris Wilson	2	1245 Garber Ave 68501

**VISITOR**

## Geology Day, February 13, 2011 - 1 to 4 P.M

Sponsored by Lincoln City Parks & Recreation Department at Pioneer Park Nature Center with Lincoln Gem & Mineral Club Members as Guest Hosts.

NAME	NUMBER IN GROUP	ADDRESS
Phyllis Fuller	2	2800 N. 152 68521
Elizabeth Thompson	2	1601 S.W. 15th 68522
Jessica Oestmann	4	68516
Mark & Rae Legner	2	Lincoln
Nathan Eschell	5	Lincoln
Mike Villa & Family	4	Lincoln
Maureen & Kayla Aspin	2	Lincoln 68524
Phyllis Schlegel	1	Lincoln
Quayle Woodell	8	Lincoln 68506
Ko, Miyuki, Will & April	4	Lincoln 68524

**VISITOR**



Al Stewart demonstrates cabochon cutting on a flat lap (left) while Robert & Judy Cropp cut cabs on a Genie (right)



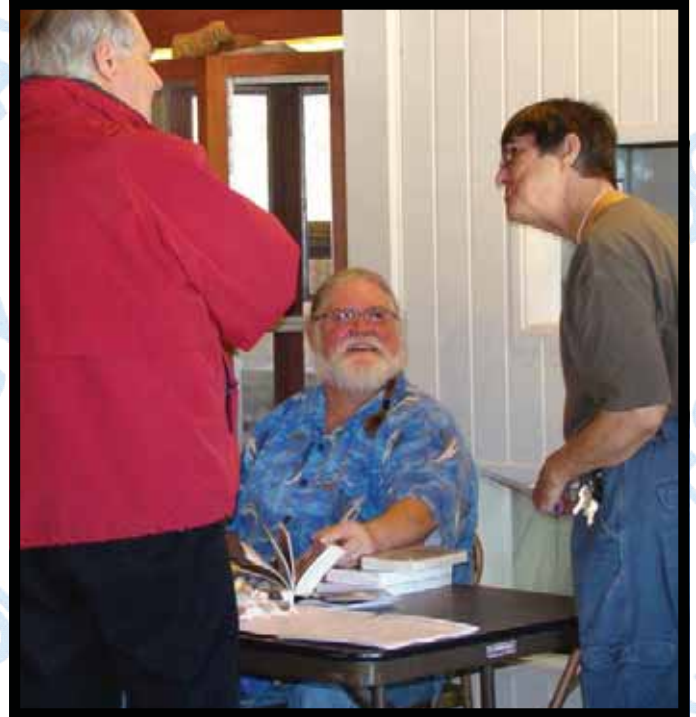
# Geology Day February 13, 2011

## Geology Day, February 13, 2011 - 1 to 4 P.M.

Sponsored by Lincoln City Parks & Recreation Department at Pioneer Park Nature Center with Lincoln Gem & Mineral Club Members as Guest Hosts.

NAME	DISPLAY
Jayne & Corey Beer	Silver smithing & Stone cutting
Alden Stewart	Lapidary
Richard Peterson	Mammoth tracks
Edward Dvorak	Wire wrapping
E-L-U-R-A	G&S
Karen Messenger	Host
Charlie Messenger	Host/Handler
Vera Lyman	
Sharon Marburger	Photography
Tom Marburger	Gems
Woody	Gems, Minerals, & Gemology
Brad Nelson	
Randy & Judy Crow	Lapidary Polishing & Grinding

Club Member



Charles Wooldridge and Karen Messenger chat with a visitor



Jim Marburger



Ed Dvorak wire-wraps tumbled stones for the kids

Geology Day  
February 13, 2011



Pioneers Park Nature Center

Proposed 2012 Event Dates

Geology Day Sunday, Feb. 12 1-4

Grinding Party Sunday, July 8 1-4

Hi, All!

Wonderful, busy day at Geology Day!  
We had 176 adults and 98 children including  
a WEBELOS group working on their Geology  
Badge.

We all missed Roger, but had 8 displayers  
that kept all visitors interested and educated.  
Thanks to Aulken, Woolly, Richard, Marburgers,  
Ed Ridge and Ed Dvorack (sp?), Beers and Gopp S.  
We had a great day despite a few technical  
transportation problems.

Thanks again to all faithful displayers.  
Charles Messenger



Co-host  
Charles Messenger



# Lincoln Public Schools/Pfizer/Novartis Science Fair

## March 29, 2011

6

Pick & Shovel

### SCIENCE FAIR

by Susy McMahan

On March 29, 2011, members of the Lincoln Gem & Mineral Club were invited to demonstrate at the Lincoln Public Schools/Pfizer/Novartis Science Fair. This is an activity that club members have enjoyed doing for many years! Around 500 fourth and fifth grade students submit their science projects to be judged. While they are waiting, several groups provide entertainment for the young scientists. Our site has always been a popular one. Club members Charlie and Karen Messenger also set up a fossil and bone display, and have done so for many years.

This year we decided to have a "gem dig", as the Science Fair has moved to a larger building. Jayne Beer, Linda Guenter, and Susy McMahan ran the gem dig, using "salted" pebbles with materials donated by many club members. Although he could not be there, Charles "Wooly" Wooldridge donated great gravel that was "salted" with raw emeralds, arrowheads, fossils, and all kinds of cool stuff that made the demonstrators want to dig!! Corey Beer (our then 12-, now 13-year-old member) demonstrated lapidary, enthusiastically answering lots of questions. Ed Ridge brought fossils, a big chunk of selenite and many other specimens. He explained it all to the kids and, of course, handed out samples. He was our go-to man for questions!

One regular attendee was missing; Roger Pabian, who passed away last December. We will have to go on without him, although much of what we know, we learned from him!

Photos courtesy of  
Susy McMahan



Volume 53, Issue 9: May 2011

**Susy McMahan asks that you  
bring to the meeting  
tumbling chips to use as salting material  
for the Pfizer-Novartis/LPS Science Fair  
which will be held on March 29.  
Your help is greatly appreciated!**



10

Pick & Shovel

Volume 53, Issue 7: March 2011



# Grinding Party

July 10, 2011



# FROM THE TRAILS

OF THE PIONEERS PARK NATURE CENTER

APRIL-AUGUST, 2011

## PROGRAMS FOR EVERYONE

### ROCK AND MINERAL GRINDING PARTY

July 10, Sunday

Chet Ager Building

1-4 p.m.

Donation

What are some of the various gems and minerals found in the Great Plains? How are gemstones prepared for jewelry? Processes from the "rough" stone through cutting, polishing, and finishing will be demonstrated by members of the Lincoln Gem and Mineral Club during this free drop-in program.



The local geese check us out each year, however, this year, it seems they brought all their friends!

Captivation





# Grinding Party July 10, 2011



Ed Ridge explains to a young visitor how his rock saw works.



Picking out the prettiest rock in the fishbowl



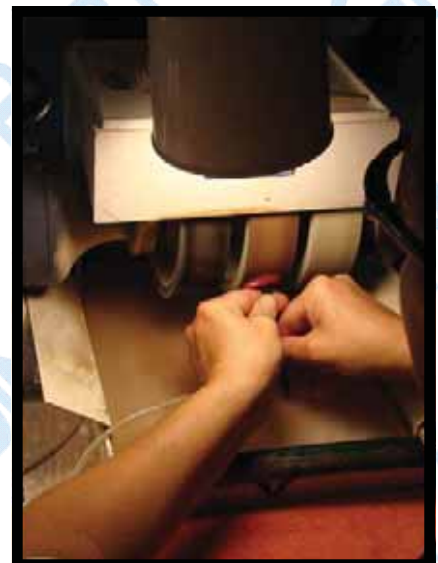
Linda Guenter shows her granddaughter how to form a cabochon



Am I doing it correctly?



Jayne Beer answers questions about making a cabochon, then demonstrates the activity.





# Grinding Party July 10, 2011



Charles "Wooly" Wooldrige



Wooly's grinding project



Visitors



Ed Ridge shows Mark Awakuni-Swetland the different grinding pads for his flat lap grinder/polisher



President Pete and a visitor look on while Wooly demonstrates cabochon cutting

# Grinding Party

## July 10, 2011

### *Grinding Party, July 10, 2011 – 1 to 4 P.M*

Sponsored by Lincoln City Parks & Recreation Department at Pioneer Park Nature Center with Lincoln Gem & Mineral Club Members as Guest Hosts.

**MEMBER NAME**

<i>Richard Peterson</i>	
<i>Jayne Beer</i>	<i>Rock grinding</i>
<i>Corey Beer</i>	"
<i>Jim Marburger</i>	<i>tumbled</i>
<i>Wooly</i>	<i>Cab cutting, tumble</i>

MEMBER

### PRESIDENT'S MESSAGE

by Richard Peterson



The Rock and Mineral Grinding Party at Pioneers Park was our club's event for July. Thanks to all who demonstrated. I want to specially thank Charles and Karen Messenger for all they do to make this event a success. It was a hot and sticky day which probably kept attendance down a bit, but the picnic afterwards was well attended. The brats, burgers, dogs and all the sides went down well.

This month we will have the Rock Party at Wooly's, more details elsewhere. Then the sale of Roger Pabian's extensive rock and mineral accumulation the 13th and 14th. And, don't forget the club field trip to Arkansas. Lastly, I am in the process of getting Dr. Robert Diffendal, Emeritus Professor at UNL, for our September program; details next month. Continue to enjoy the summer. Cheers!

Volume 53, Issue 12: August 2011

## 2011 ANNUAL GRINDING PARTY

Photos courtesy of Jim & Sharon Marburger

What can be said about the annual Grinding Party? It was HOT! Because it was so hot, not many visitors attended. Members present were Richard Peterson; Sharon & Jim Marburger; Ed Ridge; Charles & Jackie Wooldridge; Brian, Jayne, and Corey Beer; Linda Guenter; Mark Awakuni-Swetland; and Charlie & Karen Messenger.



## Grinding Party

July 10, 2011



Pioneers Park Nature Center

7-10-11

Thanks to all who braved high temperatures and higher humidity to entertain the brave 40 Adults and 31 Kids who ventured out and in! The weather really took its toll on attendance. Tentatively, we should schedule 2012 dates if we haven't already. The 2<sup>nd</sup> Sunday in February for Geology Day (hope for no snow) and the 2<sup>nd</sup> Sunday in July for Grinding Party. We'll have to watch what the city does to the Nature Center; we may be closed in February and maybe longer. Remains to be seen.

Thanks again for all your support.

Karen



Community Relations - Sunday With a Scientist  
December 18, 2011



Matt Joeckel examining mineral crust forming around a volcanic steam vent in Hawaii.



Matt Joeckel examining rock layers in western Nebraska.



# Rocks & Minerals

Sun., December 18, 1:30-4:30 pm

Ed Grew collecting minerals in Antarctica.



Learn the difference between rocks and minerals, and what causes them to glow, crystallize, or take on vibrant colors. Visitors can bring a rock or mineral to be identified.



Large crystals in pegmatite, East Antarctica.

Led by Matt Joeckel from the UNL Dept. of Earth and Atmospheric Sciences, and Ed Grew from the Dept. of Earth Sciences at the University of Maine-Orono, along with members of the Lincoln Gem and Mineral Club.

A Family Program



"Sunday with a Scientist" is a series of presentations that highlight the work of scientists, while educating kids and families on a variety of topics related to science and natural history. Presenters will share scientific information in a fun informal way through talks, demonstrations, activities or by conducting science on site. "Sunday with a Scientist" takes place from 1:30-4:30 pm at Morrill Hall on the third Sunday of each month.

# Community Relations - Sunday With a Scientist December 18, 2011

Pick & Shovel

9

## SUNDAY WITH A SCIENTIST (COMMUNITY ACTIVITY)

by Charles Wooldridge

On Sunday, December 18th, the Lincoln Gem and Mineral Club participated in the SUNDAY WITH A SCIENTIST series presented by the University of Nebraska State Museum. Ten members set up in the Museum's Elephant Hall. Folks arrived early for the 1:30 to 4:30 affair. We had five club members demonstrating cabochon cutting, one tumbler, one wire wrapper, one display of various gems and minerals, and one display of utility uses of rocks and minerals. Several scientists from the University provided rock and mineral identification and geological presentations. The club provided free tumbled stones, wire wrapping, and lots of information about the hobby. I was informed the total attendance was 164 people, which is considered a good turnout for such an event.

**EDITOR'S NOTE:** A great big THANK YOU to the attending club members: Mark Awakuni-Swetland; Brian, Jayne, and Corey Beer; Rowdy and Judy Cropp; Ed Dvorak; Ed Ridge; Al Stewart; and Charles Wooldridge.



Rowdy & Judy  
Cropp  
demonstrate  
cabochon cutting

(Photos courtesy of Jayne Beer)

Ed Ridge  
shows off his  
gems and  
minerals to  
interested  
visitors



The following are two thank you letters sent by the Museum:

Dear Sunday with a Scientist Presenters,

Thank you so much for presenting at the museum on Sunday. There was a total of 164 visitors: Adults 80, Children 70, UNL Students 2, Friends 12. This was a good number, especially since it was a 50 degree day outside and the Sunday BEFORE CHRISTMAS!

I have attached the summary of visitor comments from the exit surveys. They were all so positive. Visitors enjoyed the opportunity for one-on-one conversations and questions with the scientists. The lapidary demonstrations were also very well received. Together there was something for everyone.

Thank you for sharing your science with so many. There was also a first – there were 3 “Eds” presenting for Sunday with a Scientist!

We hope to see all of you back in Morrill Hall when the Mineral Exhibits opens at the end of February. Wishing you a happy holiday!

Kathy French

Dear Kathy and SWS Minerals presenters,

Thanks to all of you for the hard work and effort you put in to make SWS Minerals such a success. It was non-stop from 1:15 to finish, and the visitors I spoke with really had a wonderful time and obviously found it all a very valuable experience.

Hopefully we stimulated a lot of interest in rocks and minerals in the youngsters who attended - they certainly loved the rock and mineral trading cards and begged to have more than one each!

I know it takes a lot of effort to carry in the equipment, set up and then run the event, and I am deeply appreciative of all the dedicated volunteers that we had from the Lincoln Gem and Mineral Club -- I hope that you will convey my sincere thanks to all of them. The kids loved watching lapidary, and getting their souvenirs!

Best wishes to all for the holiday season, and hope to see you in the Museum's new Minerals gallery in February.

Priscilla Grew

(Continued on page 10)



Community Relations - Sunday With a Scientist  
December 18, 2011

10

Pick & Shovel

SUNDAY WITH A SCIENTIST - CONTINUED



Mark Awakuni-Swetland  
shares his knowledge



Al Stewart watches Corey Beer  
work a cabochon



Corey catches the attention of  
some young visitors and shows  
them what he can do with a plain  
old rock!

(Photos courtesy of Jayne Beer)



(LEFT)  
Charles Wooldridge demonstrates how  
to tumble stones and hands out  
free samples

and



Ed Dvorak wire wraps the tumbled  
stones for the visitors

Volume 54, Issue 5: January 2012



Section

5d

Section

5e





# Pabian Memorial

## April 2, 2011

Pick & Shovel

9

### ROGER PABIAN MEMORIAL PARTY

by Jayne Beer

The Roger Pabian Memorial Party was a fantastic evening! We began with eating, of course. There was a fabulous spread of food. LGMC provided fried and baked chicken from Super Saver, drinks and tableware. All of the guests brought many delicious side dishes.



While we ate, we ran the slide show that Susy McMahan put together. It was a touching group of pictures from when Roger was a baby, to junior high, to in the army, to university pictures, to university retirement, to many rock collecting field trips, to a numismatic society show, and ending up with a heart-wrenching photo of Bill White waving good-bye.



Then Wooly suggested that every one stand up and introduce themselves and tell how they knew Roger, or relate a story about him. There were many tears and much laughter. It was overwhelming just to sit there and realize how important Roger was to so many people. He is truly, truly missed by so many.

There were about 75 to 80 guests at the party, including eight or nine people from Roger's family (his brother, Howell Pabian, and several cousins). I had never seen anything like this. Wooly had a great vision of how the evening should go and he directed it flawlessly. So many people came to me as it was winding down to tell me just how much they need this



type of thing to deal with the loss of our friend. At the end of the evening, Eddie Ridge was there until the end, helping to rearrange the tables, cleaning and sweeping, then being responsible to return the shelter house key.

When I got home from the get-together, I opened my e-mail and found that I had gotten a message from a friend of Roger's, Maziar Nazari from Iran. Here is a quote that he had hoped for us to share at the party. *"Richness is not our bank account or estate, it is the number of people who know and love us around the world. Roger was my richest friend."*



Maziar has an Agate web site and he and Roger had exchanged many stones and ideas for about the last 15 years. If anyone would like to check out the web site, it is [www.iranian-agates.freesevers.com](http://www.iranian-agates.freesevers.com). He also has a link to Roger's agate lexicon on his site. Everyone in the club should spend some time at both sites.

Photos courtesy of Jayne Beer



# Pabian Auction August 13, 2011



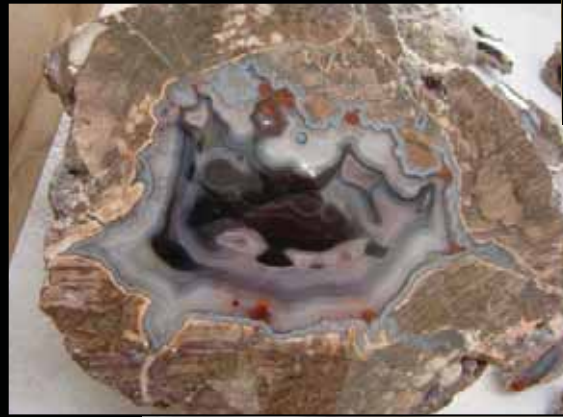
A nice turnout



LGMC member Greg Ford of Ford & Ford Auctions



LGMC members Jim Marburger, Rowdy Cropp, and Vera Lyman wait for the auction to begin



**SECTION 5 – COMMUNITY RELATIONS**

Lapidary Class

Following the death of Roger Pabian, Robert and Judy Cropp took over teaching a Lapidary Class at Southeast Community College. The class has 8 – 10 students each semester.



## ROCK & GEM'S CRAFTSMAN OF THE MONTH

Written by Robert Cropp for Rock & Gem magazine's Craftsman of the Month column. Published in Volume 41, Number 03, March 2011.

"This is a project I started at the second silversmithing class I took," writes March Craftsman of the Month Robert Cropp. "It uses Apache Dendritic Picture rhyolite from around Deming, New Mexico, one of my favorite stones to polish and certainly one of the rarer rocks to find. I met one of the holders of the claim from which this very unusual material comes last year, and have been a huge fan of the material ever since.

"First, I selected a nice section and cut it out of a slab in a freeform shape that saved the most picture pattern I could without making the cab too large. I then polished it on my Genie with 220, 600, 1200 and 1400 grit wheels. This particular rock is a little harder to polish than a lot of others and takes a little patience. It usually will not take a 'mirror' finish, but it does polish up nicely and has very unique colors and patterns.

"Next, I shaped a bezel around the cab and soldered it together with hard silver solder. The next thing I decided to do was solder a piece of square wire inside the bezel with medium solder, instead of using a solid backing sheet, so I could show both sides of the stone, as I had a really hard time deciding which side of the cabochon looked best. This was the most difficult piece I have ever done, as I found it very hard to solder this small piece in all the way around. I have only been doing silversmithing for less than two years and don't quite know all the tricks, yet.

"After that, I sanded the edges smooth. The next thing I did was take another piece of square wire and make a small loop on the top of the bezel for a jump ring for the chain to pass through and a small loop of square wire on the bottom for the beads that I wanted to attach to the bottom of the pendant. I soldered them on at the same time with a soft solder. I then smoothed out everything once again. After that, I made a jump ring out of some silver scrap and soldered it together inside the loop on top with soft solder.

"Finally, I got to put the cabochon into the pendant and polish the piece. The finishing touch was putting

two small garnet beads and a natural pearl on a piece of wire that had a blunted end and attaching it to the pendants.

"This is the most difficult project I have done to date, and I don't know if I could ever part with this piece, as it turned out much better than I thought it would. It was truly a joy to see the finished product."

Photo courtesy of Jim Atkins



### 2011 ALL AMERICAN

As contributors can attest, it is much easier to supply to Sharon Marburger the information for the next All American Club Award Application as the events happen. If you do any presentations, programs, take pictures at club events, or anything else to benefit the club, please provide copies to Sharon for inclusion in the application. Additionally, the application can be compiled as we go through the year, rather than waiting until the last minute - which creates a lot of unnecessary stress for Sharon. Not to mention you will receive her undying appreciation!

Thanks to Susy McMahan for sending a copy of her letter regarding Rockhound State Park! Great job, Susy!



## **SECTION 6 - GOVERNMENT AGENCY AND LEGISLATIVE RELATIONS**

### **INDEX**

- Section 6a      Members contacted congressional representatives regarding legislation affecting access to sites, and collecting from same
  
- Section 6b      Club members supported access/collecting lobbying organizations



Section

6a

---

**Subject:** Rockhound State Park

---

**From:** Susy McMahan, Jim McMahan (blueriverjewelry@neb.rr.com)

---

**To:** nmparks@state.nm.us;

---

**Cc:** lgmsecretary@yahoo.com;

---

**Date:** Monday, March 21, 2011 9:31 PM

---

To the New Mexico Rockhound State Park planning committee,

Please allow some input on your plan from a rockhound. While the hobby has tapered off since the 1960's when most families had 2 weeks vacation each summer to travel, camp and collect rocks, the hobby is far from dead.

Rockhounds are bound by a code of ethics, which includes collecting anywhere:

- ◆ **I will respect both private and public property and will do no collecting on privately owned land without permission from the owner.**
- ◆ **I will keep informed on all laws, regulations or rules governing collecting on public lands and will observe them.**
- ◆ **I will, to the best of my ability, ascertain the boundary lines of property on which I plan to collect.**
- ◆ **I will use no firearms or blasting material in collecting areas.**
- ◆ **I will cause no willful damage to property of any kind such as fences, signs, buildings, etc.**
- ◆ **I will leave all gates as found.**
- ◆ **I will build fires only in designated or safe places and will be certain they are completely extinguished before leaving the area.**
- ◆ **I will discard no burning material - matches, cigarettes, etc.**
- ◆ **I will fill all excavation holes which may be dangerous to livestock.**
- ◆ **I will not contaminate wells, creeks, or other water supplies.**
- ◆ **I will cause no willful damage to collecting material and will take home only what I can reasonably use.**
- ◆ **I will practice conservation and undertake to utilize fully and well the materials I have collected and will recycle my surplus for the pleasure and benefit of others.**
- ◆ **I will support the rockhound project H.E.L.P. (Help Eliminate Litter Please) and will leave all collecting areas devoid of litter, regardless of how found.**
- ◆ **I will cooperate with field-trip leaders and those in designated authority in all collecting areas.**
- ◆ **I will report to my club or federation officers, Bureau of Land Management or other authorities, any deposit of petrified wood or other materials on public lands which should be protected for the enjoyment of future generations for public educational and scientific purposes.**
- ◆ **I will appreciate and protect our heritage of natural resources.**
- ◆ **I will observe the "Golden Rule", will use Good Outdoor Manners and will at all times conduct myself in a manner which will add to the stature and Public Image of Rockhounds everywhere.**

New Mexico is known for its natural resources which include many different rocks and minerals. My family and I have enjoyed vacationing there and 'collecting'. The Rockhound State Park was originally meant for that-collecting rocks. As a rockhound, I am well aware there are many more rocks in the earth than we will ever collect. I check that every spring:)

I urge you to reconsider and allow collecting. The plans for upgrading facilities, fencing, and the cosmetics are great, but please improve and leave the option of collecting rocks in place. Our State and National Parks were meant to be enjoyed by the people, and I assure you the greater majority of rockhounds will always be some of your best guests. I believe the last thing we want to do is restrict access or turn parks into marketing tools or draws for "Events" only. Nature is there to be enjoyed at our leisure also.

Thank-you for your consideration of my views.

Respectfully yours,

Susy McMahan  
5636 Greenwood St.  
Lincoln, NE 68507-2230  
402-464-0065

Member in good standing of:

Lincoln Gem and Mineral Club  
Lincoln, NE

Nebraska Mineral and Gem Club  
Omaha, NE

NAOESCI  
Nebraska Association of Earth Sciences

Midwest Federation of Mineralogical and Geological Sciences

American Federation of Mineralogical Societies



Section

6b

## **SECTION 6 - GOVERNMENT AGENCY AND LEGISLATIVE RELATIONS**

American Lands Access Association

Blue Ribbon Coalition